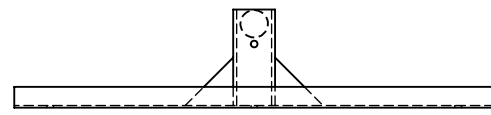
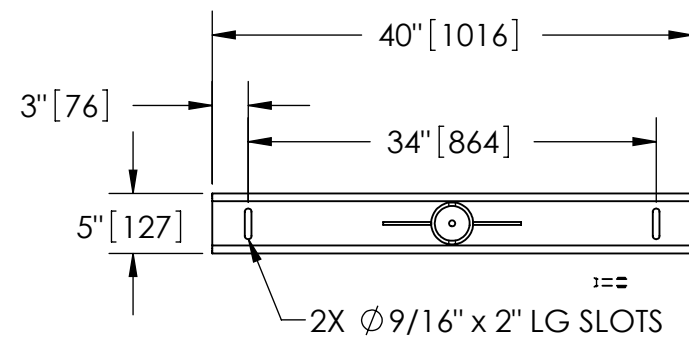


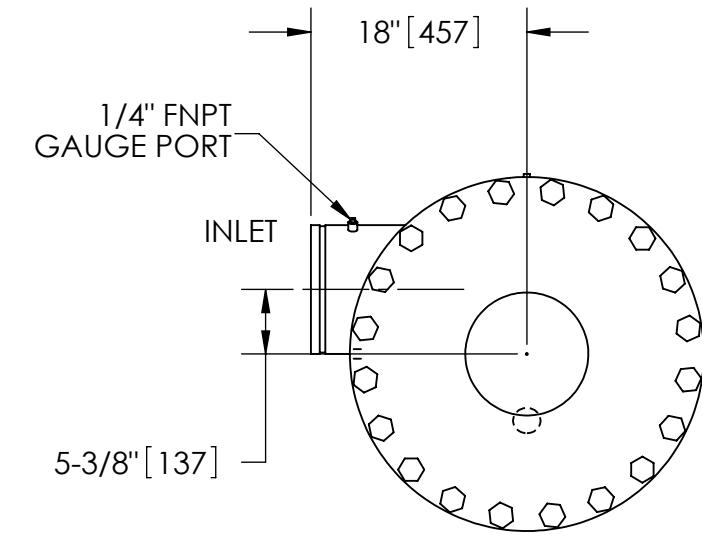
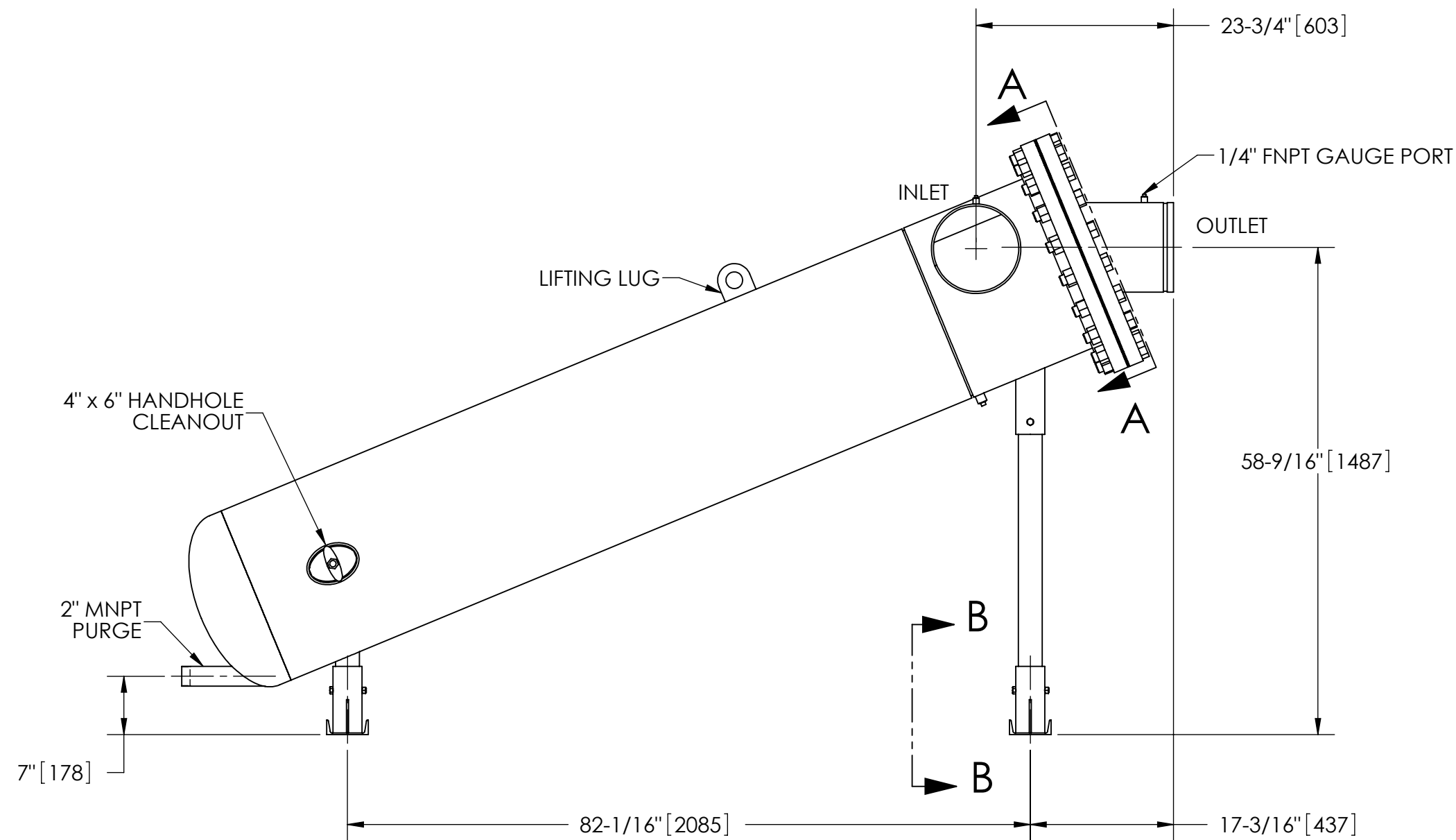
EXCEPT AS OTHERWISE PROVIDED BY CONTRACT, THIS DRAWING AND SPECIFICATIONS SHALL NOT BE REPRODUCED, COPIED OR USED AS THE BASIS FOR MANUFACTURE OR SALE OF MATTER DEPICTED HEREIN WITHOUT THE EXPRESSED WRITTEN PERMISSION OF THE CLAUDE LAVAL CORPORATION, OR ITS ASSIGNEES.

NOTES:

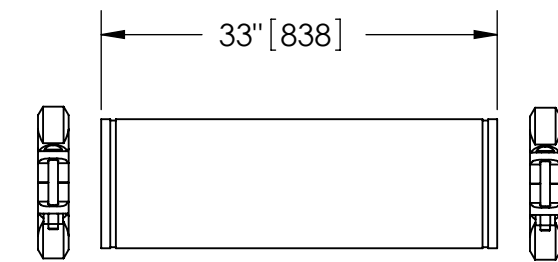
1. INLET & OUTLET ARE 10" GROOVED PIPE.
2. MAXIMUM PRESSURE: 150 psi (10.3 bar).
3. MAXIMUM TEMPERATURE: 180°F (82.2°C).
4. PRESSURE LOSS: 3-12 psid (.2-.8 bar) AT RATED FLOW.
5. RATED FLOW: 1275-3100 gpm (290-704 m³/hr).
6. APPROXIMATE DRY WEIGHT: 1280 lbs (581 kg).
7. FINISH: LAKOS BLACK (EXTERIOR ONLY).



SECTION B-B



SECTION A-A



**GROOVED SPOOL**  
 MODEL GCS-1275/1850 (AVAILABLE SEPARATELY)  
 REQUIRED FOR REMOVAL OF TOP ASSEMBLY

**SUBMITTAL DRAWING**

This drawing is submitted for spatial consideration only. Do not pre-plumb to these dimensions.

REVISIONS				
ECN	REV.	DESCRIPTION	DATE	APPROVED

UNLESS OTHERWISE SPECIFIED: DIMENSIONS ARE IN: INCHES [mm] TOLERANCES ARE:		ENGINEERED FOR: <b>STANDARD</b>		CLAUDE LAVAL CORP. FRESNO, CALIFORNIA 93727 WWW.LAKOS.COM		LAVAL UNDERGROUND SURVEYS	
FRACTIONS ± 1"	DECIMALS .XX ± .01 .XXX ± .005 .XXXX ± .0005	ANGLES ± 1/4°	APPROVALS	DATE	TITLE HTX-1275-L, SEPARATOR, 1275-3100 gpm, CARBON STEEL		
DO NOT SCALE DRAWING			DRAWN DLW	1/18/06	SIZE C		
MATERIAL CLASS P-1 MILD CARBON STEEL			ENGR β	2/3/06	MODEL NO.		REV. F
FINISH LAKOS BLACK			MFG -	-	DWG NO. 115285		EST. WT. 1280 lb
			WORK ORDER	QTY.	SCALE 1:16		SHEET 1 OF 1

DWG NO. 115285  
 SH 1  
 REV. F