

EXCEPT AS OTHERWISE PROVIDED BY CONTRACT, THIS DRAWING AND SPECIFICATIONS SHALL NOT BE REPRODUCED, COPIED OR USED AS THE BASIS FOR MANUFACTURE OR SALE OF MATTER DEPICTED HEREIN WITHOUT THE EXPRESSED WRITTEN PERMISSION OF THE CLAUDE LAVAL CORPORATION, OR ITS ASSIGNEES.

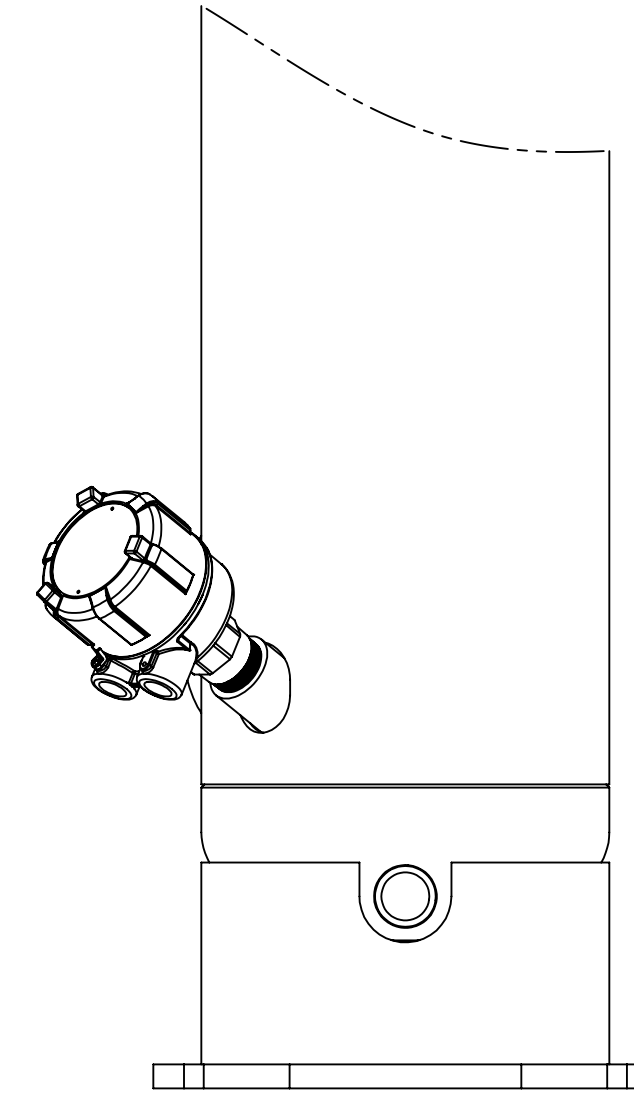
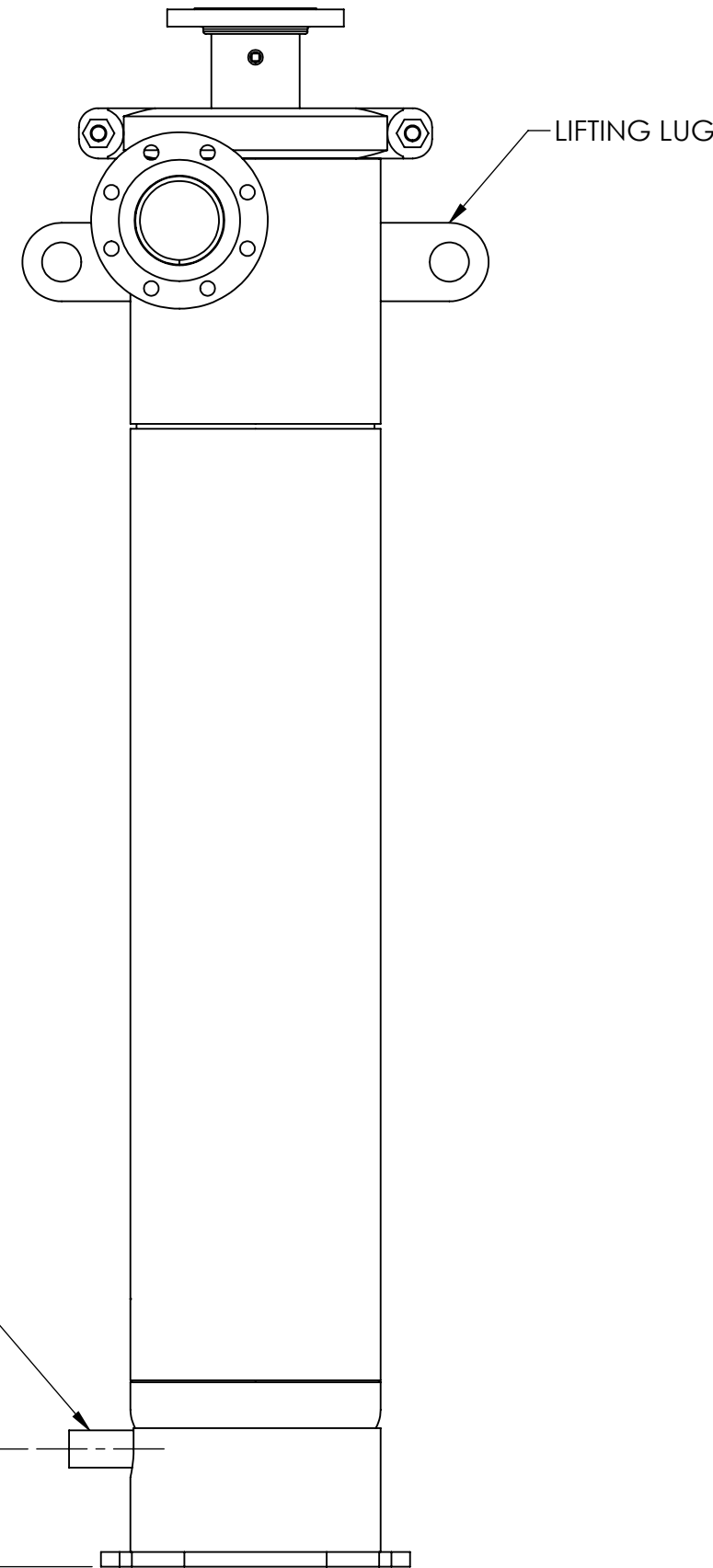
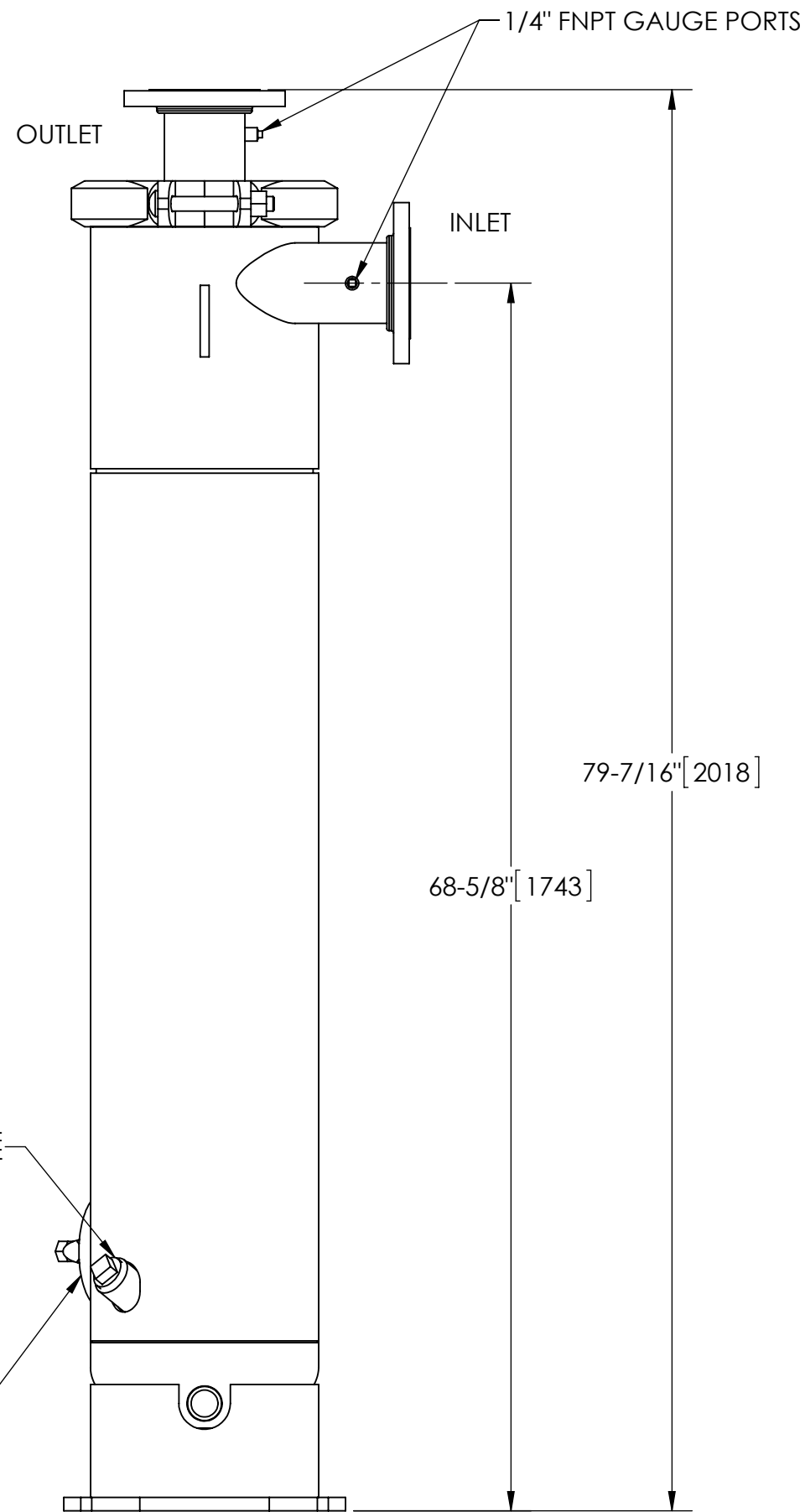
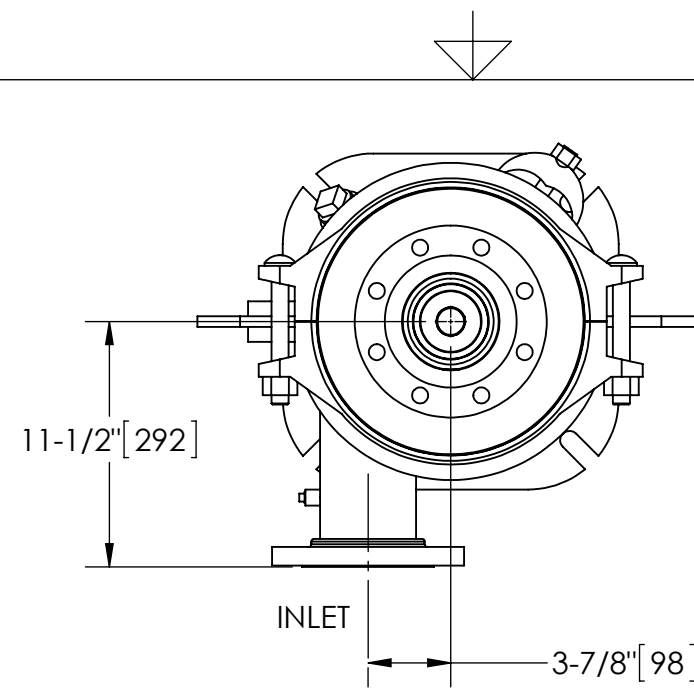
NOTES:

1. INLET & OUTLET ARE FLANGES ARE 4" 150# RF PER ANSI B16.5 REQUIRING 4X Ø1/2" BOLTS (BOLTS AND GASKETS NOT INCLUDED).
2. MAXIMUM PRESSURE: 250 PSI (17.4 bar).
3. MAXIMUM TEMPERATURE: 230°F (110°C).
4. PRESSURE LOSS: 5-18 psid (.34-1.24 bar) AT RATED FLOW.
5. RATED FLOW: 195-350 gpm (44.3-79.5 m³/hr).
6. APPROXIMATE DRY WEIGHT: 541 lb (245 kg).
7. FINISH: LAKOS BLUE (EXTERIOR ONLY).

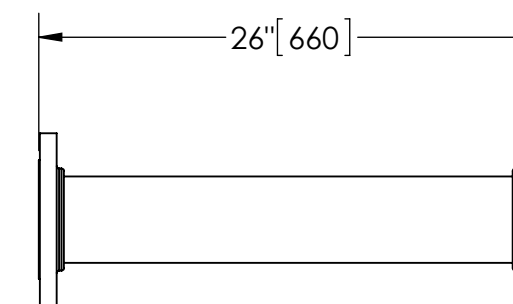
REVISION HISTORY				
ZONE	REV	DESCRIPTION	DATE	APPROVED

## SUBMITTAL DRAWING

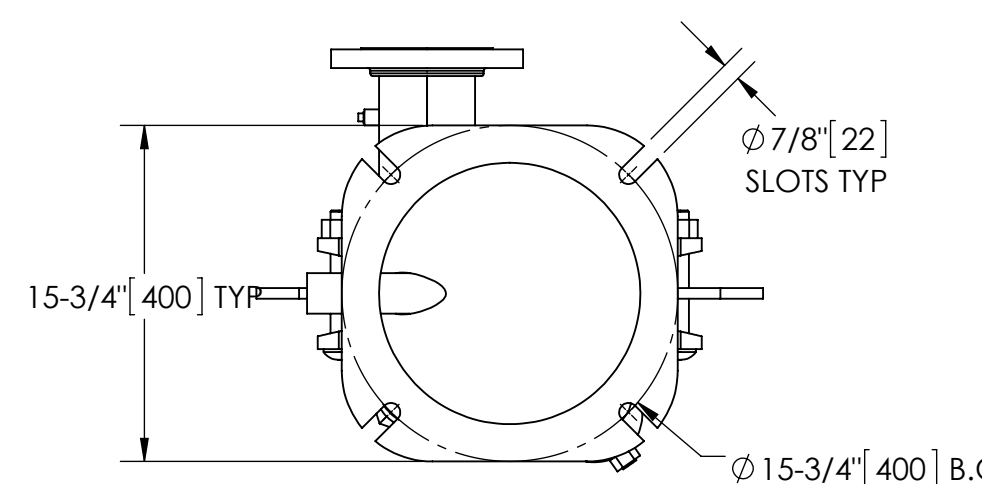
This drawing is submitted for spatial consideration only. Do not pre-plumb to these dimensions.



**OPTIONAL SMART PURGE**  
UNIT SHOWN WITH OPTIONAL SMART PURGE SENSOR ASSEMBLY INSTALLED (ORDER SEPARATELY)



**OPTIONAL FLANGED SPOOL**  
MODEL FS-04 (AVAILABLE SEPARATELY)  
REQUIRED FOR REMOVAL OF TOP ASSEMBLY



UNLESS OTHERWISE SPECIFIED: DIMENSIONS ARE IN: INCHES (mm) TOLERANCES ARE: FRACTIONS DECIMALS ANGLES ± 1/2" .XX ± .01 ± 1/4" XXX ± .005 XXXX ± .0005	ENGINEERED FOR: <b>STANDARD</b>	
	APPROVALS	DATE
	DRAWN Cag	10/1/14
	ENGR	
DO NOT SCALE DRAWING	MATERIAL CLASS P-1 MILD CARBON STEEL	MFG
FINISH LAKOS BLUE	WORK ORDER	QTY.

**LAKOS.** CLAUDE LAVAL CORP.  
FRESNO, CALIFORNIA 93727  
WWW.LAKOS.COM

TITLE eJPX-0195-V, SEPARATOR 0195 eJPX VERTICAL, CARBON STEEL			
SIZE C	MODEL NO.	DWG NO. <b>137163</b>	REV. <b>01</b>
SCALE 1:10	EST. WT. 541 lb	SHEET 1 OF 1	

THIS DRAWING HAS BEEN GENERATED AND IS MAINTAINED BY A CAD SYSTEM. CHANGES SHALL ONLY BE INCORPORATED AS DIRECTED BY AN APPROVED ENGINEERING CHANGE ORDER (ECO). PAPER COPIES ARE UNCONTROLLED.

DWG NO. 137163  
SHEET 1  
REV. 01