

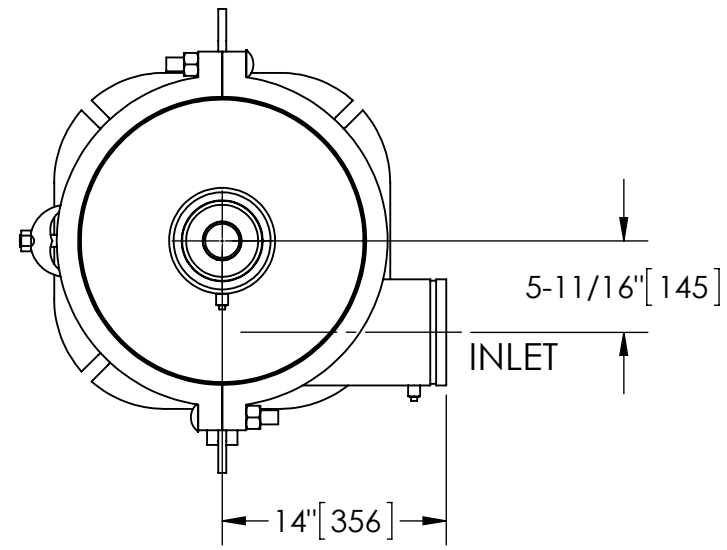
EXCEPT AS OTHERWISE PROVIDED BY CONTRACT, THIS DRAWING AND SPECIFICATIONS SHALL NOT BE REPRODUCED, COPIED OR USED AS THE BASIS FOR MANUFACTURE OR SALE OF MATTER DEPICTED HEREIN WITHOUT THE EXPRESSED WRITTEN PERMISSION OF THE CLAUDE LAVAL CORPORATION, OR ITS ASSIGNEES.

NOTES:

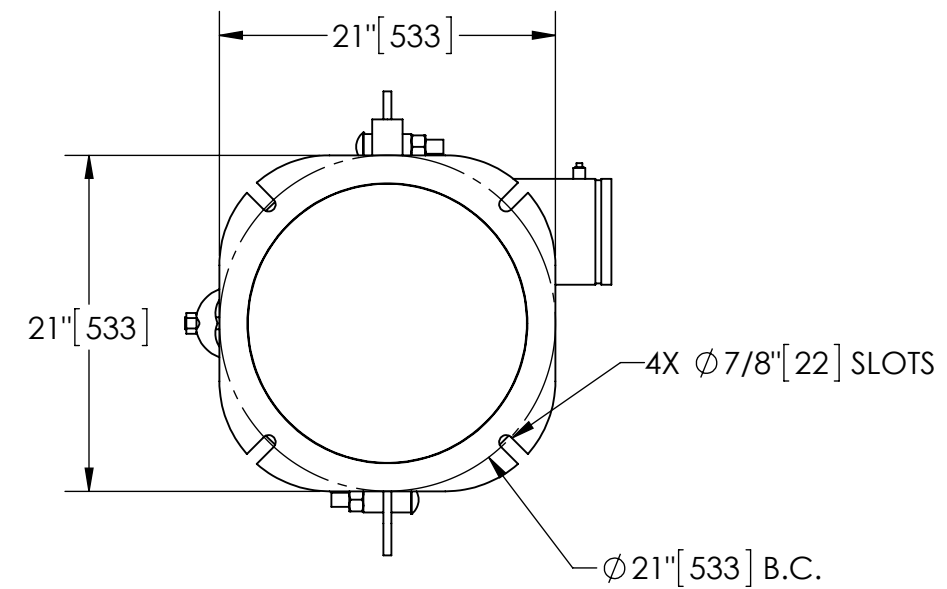
1. INLET & OUTLET ARE 6" GROOVED PIPE.
2. MAXIMUM PRESSURE: 150 psi (10.3 bar).
3. MAXIMUM TEMPERATURE: 180°F (82.2 C).
4. PRESSURE LOSS: 2-15 psid (.14-1.03 bar) AT RATED FLOW.
5. RATED FLOW: 320-770 gpm (73-175 m³/hr).
6. APPROXIMATE DRY WEIGHT: 979 lbs (444 kg).
7. FINISH: LAKOS BLACK (EXTERIOR ONLY).

THIS DRAWING HAS BEEN GENERATED AND IS MAINTAINED BY A CAD SYSTEM. CHANGES SHALL ONLY BE INCORPORATED AS DIRECTED BY AN APPROVED ENGINEERING CHANGE ORDER (ECO). PAPER COPIES ARE UNCONTROLLED.

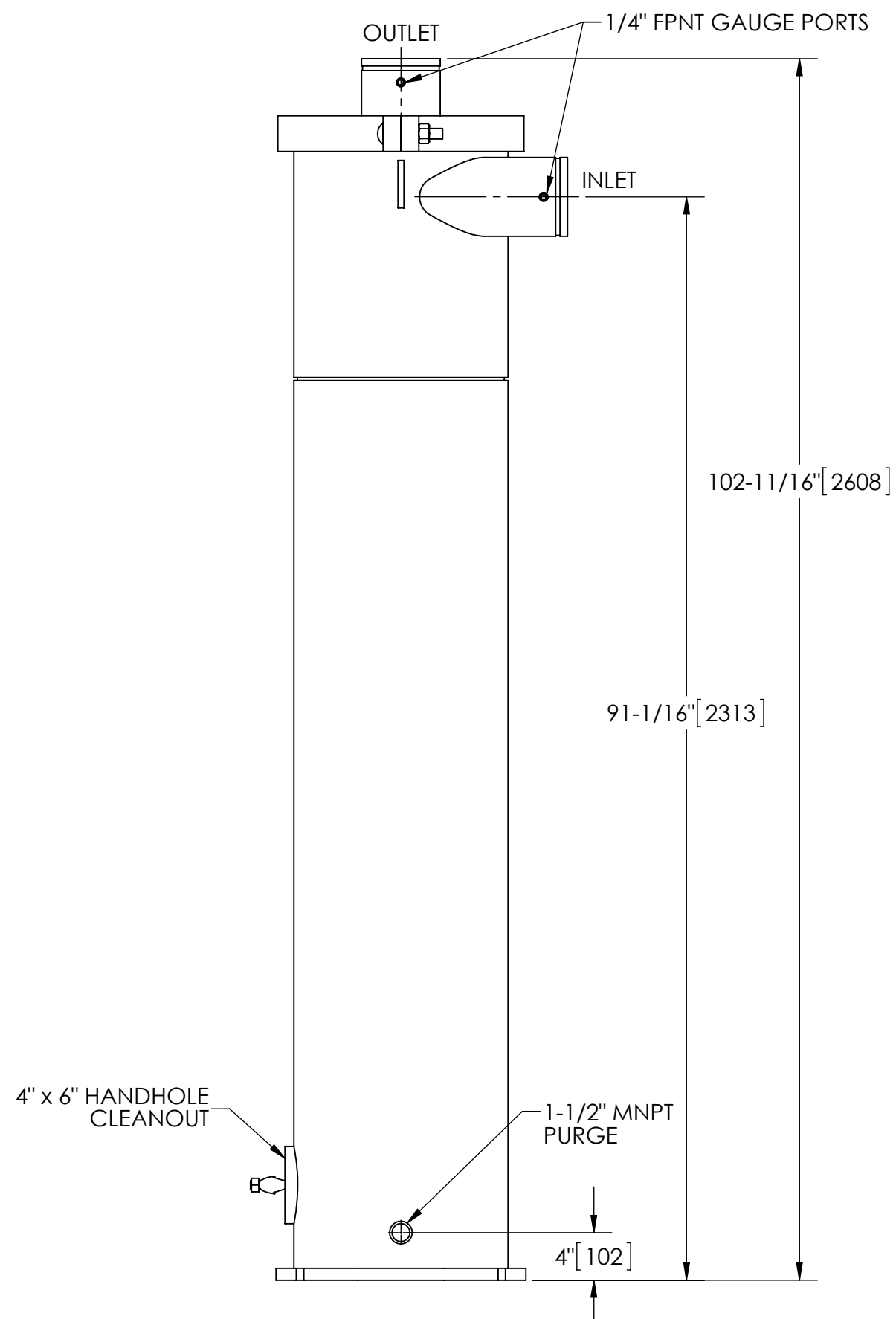
REVISION HISTORY				
ZONE	REV	DESCRIPTION	DATE	APPROVED



TOP VIEW



BOTTOM VIEW



SUBMITTAL DRAWING

This drawing is submitted for spatial consideration only. Do not pre-plumb to these dimensions.

UNLESS OTHERWISE SPECIFIED: DIMENSIONS ARE IN: INCHES (mm) TOLERANCES ARE: FRACTIONS DECIMALS ANGLES ± 1/4" .XX ± .01 ± 1° .XXX ± .005 .XXXXX ± .0005		ENGINEERED FOR: STANDARD		CLAUDE LAVAL CORP. FRESNO, CALIFORNIA 93727 WWW.LAKOS.COM		LAVAL UNDERGROUND SURVEYS					
DO NOT SCALE DRAWING		APPROVALS	DATE	TITLE							
MATERIAL CLASS P-1 MILD CARBON STEEL		DRAWN	TAR	1/13/14		eHTX-0320-V, SEPARATOR 320-770 gpm, CARBON STEEL					
FINISH LAKOS BLACK		ENGR	-	-		SIZE	MODEL NO.	DWG NO.	REV.		
		MFG	-	-		C		136848	01		
		WORK ORDER		QTY.		SCALE	1:12	EST. WT.	975 lb	SHEET	1 OF 1

DWG. NO. 136848 SHEET 1 REV. 01