

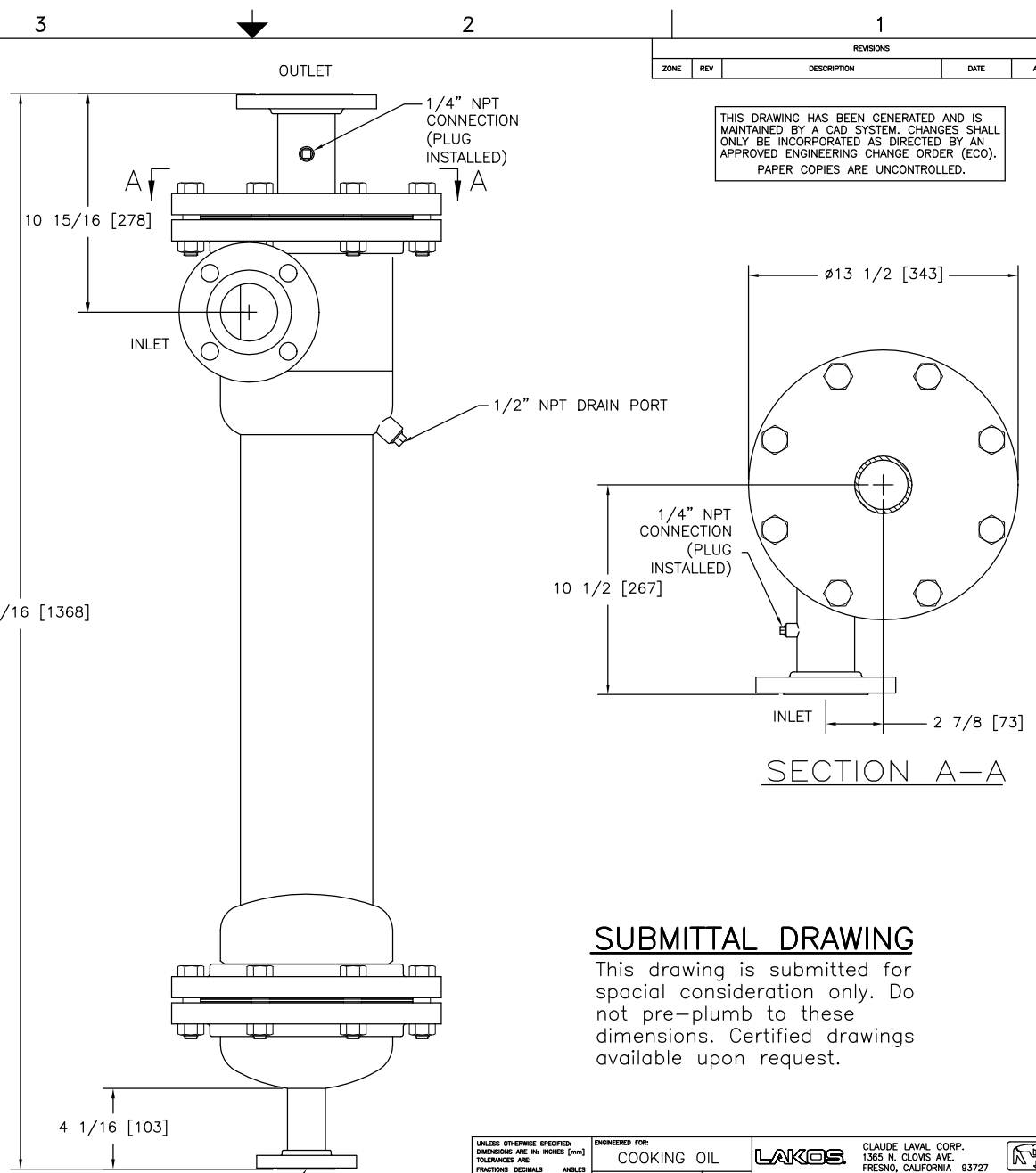
EXCEPT AS OTHERWISE PROVIDED BY CONTRACT, THIS DRAWING AND SPECIFICATIONS SHALL NOT BE REPRODUCED, COPIED OR USED AS THE BASIS FOR MANUFACTURE OR SALE OF MATTER DEPICTED HEREIN WITHOUT THE EXPRESSED WRITTEN PERMISSION OF THE CLAUDE LAVAL CORPORATION, OR ITS ASSIGNEES.

NOTES:

1. INLET & OUTLET FLANGES ARE 2-1/2" 150# RF PER ANSI B16.5 REQUIRING 4X 5/8" x 3" LONG BOLTS (BOLTS AND GASKETS NOT INCLUDED).
2. MAXIMUM PRESSURE: 100 psi (689 kPa).
3. MAXIMUM TEMPERATURE: 400°F (204°C).
4. PRESSURE LOSS: 3-12.0 psi (21-83 kPa) AT RATED FLOW.
5. RATED FLOW: 110-180 gpm (25-41m³/hr).
6. APPROXIMATE DRY WEIGHT: 245 lbs (111 kg).
7. FINISH: GLASSBLAST (EXTERIOR ONLY).
8. THREADED CONNECTIONS SEALED USING TEFLON PASTE SEALANT JOHN CRANE JC-30 OR EQUIVALENT.
9. GASKET: SPIRAL WOUND, 304 SS W/PTFE FILLER.

REVISIONS				
ZONE	REV	DESCRIPTION	DATE	APPROVED

THIS DRAWING HAS BEEN GENERATED AND IS MAINTAINED BY A CAD SYSTEM. CHANGES SHALL ONLY BE INCORPORATED AS DIRECTED BY AN APPROVED ENGINEERING CHANGE ORDER (ECO). PAPER COPIES ARE UNCONTROLLED.



SUBMITTAL DRAWING

This drawing is submitted for special consideration only. Do not pre-plumb to these dimensions. Certified drawings available upon request.

UNLESS OTHERWISE SPECIFIED: DIMENSIONS ARE IN INCHES (mm) TOLERANCES ARE: FRACTIONS DECIMALS ANGLES ±1/4" .005 ±.01 ±1/4° DO NOT SCALE DRAWING MATERIAL TYPE 304L STAINLESS STEEL FINISH GLASSBLAST WORK ORDER	ENGINEERED FOR: COOKING OIL		LAKOS CLAUDE LAVAL CORP. 1365 N. CLOWS AVE. FRESNO, CALIFORNIA 93727		LAV L A V A L C O R P. U N D E R G R O U N D S U P P L I E R
	APPROVALS	DATE	TITLE		
	DRAWN PMT	5/13/01	CSX-0110-HV/S, SEPARATOR, 2-1/2" CSX VERTICAL, STAINLESS STEEL		
	REVIEWED NAC	6/8/01	SIZE C	MODEL NO. 118180	REV. -
	ENGR β	6/8/01	SCALE 1/4"	EST. WT. 118180	SHEET 1 OF 1