

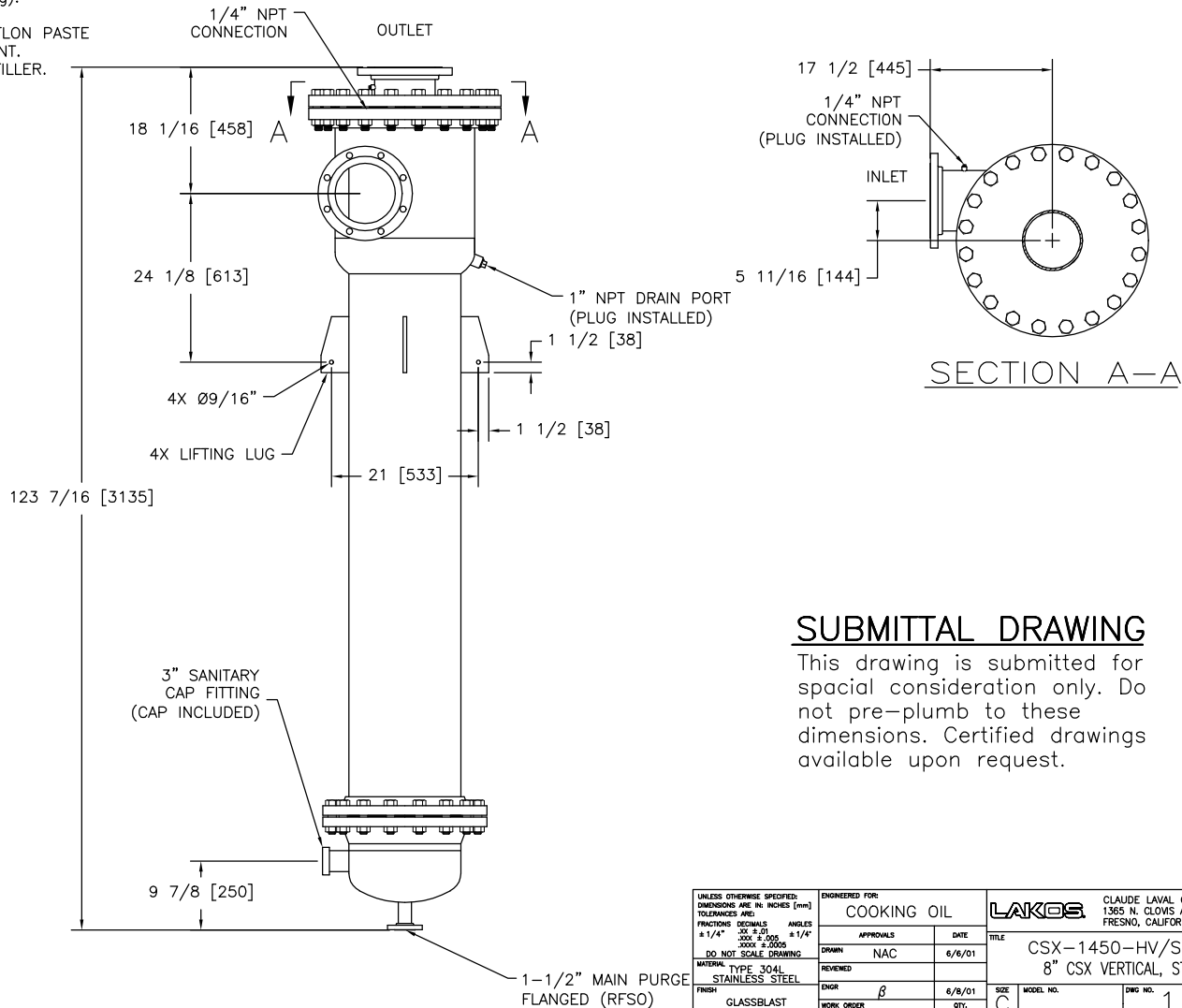
EXCEPT AS OTHERWISE PROVIDED BY CONTRACT, THIS DRAWING AND SPECIFICATIONS SHALL NOT BE REPRODUCED, COPIED OR USED AS THE BASIS FOR MANUFACTURE OR SALE OF MATTER DEPICTED HEREIN WITHOUT THE EXPRESSED WRITTEN PERMISSION OF THE CLAUDE LAVAL CORPORATION, OR ITS ASSIGNEES.

REVISIONS				
ZONE	REV	DESCRIPTION	DATE	APPROVED

THIS DRAWING HAS BEEN GENERATED AND IS MAINTAINED BY A CAD SYSTEM. CHANGES SHALL ONLY BE INCORPORATED AS DIRECTED BY AN APPROVED ENGINEERING CHANGE ORDER (ECO). PAPER COPIES ARE UNCONTROLLED.

NOTES:

1. INLET & OUTLET FLANGES ARE 8" 150# RF PER ANSI B16.5 REQUIRING 8X 3/4"x 3-1/2" LONG BOLTS (BOLTS AND GASKETS NOT INCLUDED).
2. MAXIMUM PRESSURE: 100 psi (689 kPa).
3. MAXIMUM TEMPERATURE: 400°F (204°C).
4. PRESSURE LOSS: 3-12.0 psi (21-83 kPa) AT RATED FLOW.
5. RATED FLOW: 1450-2700 gpm (329-613 m³/hr).
6. APPROXIMATE DRY WEIGHT: 816 lbs (370 kg).
7. FINISH: GLASSBLAST (EXTERIOR ONLY).
8. THREADED CONNECTIONS SEALED USING TEFLON PASTE SEALANT JOHN CRANE JC-30 OR EQUIVALENT.
9. GASKET: SPIRAL WOUND, 304 SS W/PTFE FILLER.



SUBMITTAL DRAWING

This drawing is submitted for special consideration only. Do not pre-plumb to these dimensions. Certified drawings available upon request.

<small>UNLESS OTHERWISE SPECIFIED: DIMENSIONS ARE IN INCHES (MM) TOLERANCES ARE: FRACTIONS DECIMALS ANGLES ±1/4" .005 ±.01 ±1/4" DO NOT SCALE DRAWING MATERIAL TYPE 304L FINISH STAINLESS STEEL GLASSBLAST</small>	ENGINEERED FOR: COOKING OIL		LAKOS CLAUDE LAVAL CORP. 1365 N. CLOVIS AVE. FRESNO, CALIFORNIA 93727		
	APPROVALS	DATE	TITLE		
	DRAWN NAC	6/6/01	CSX-1450-HV/S, SEPARATOR, 8" CSX VERTICAL, STAINLESS STEEL		
	ENGR β	6/8/01	SCALE 1"=1'	MODEL NO. 118200	
WORK ORDER	QTY.	EST. WT.		SHEET 1 OF 1	