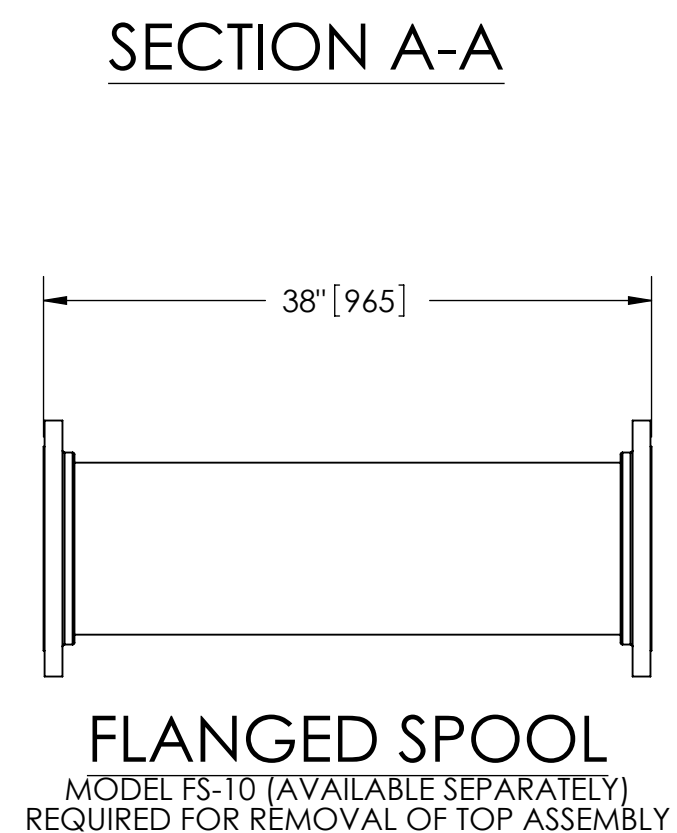
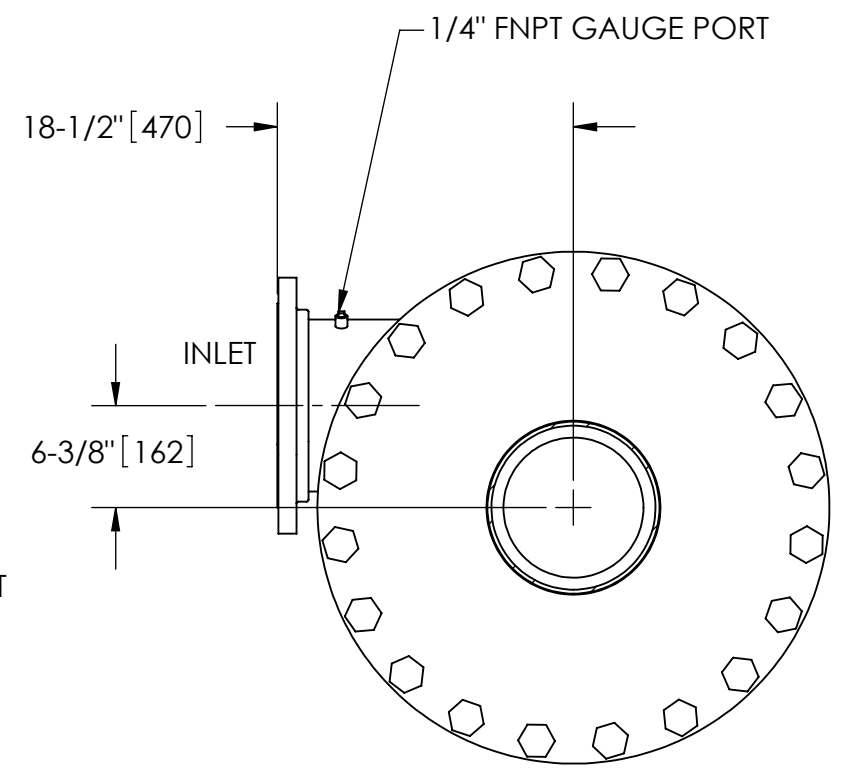
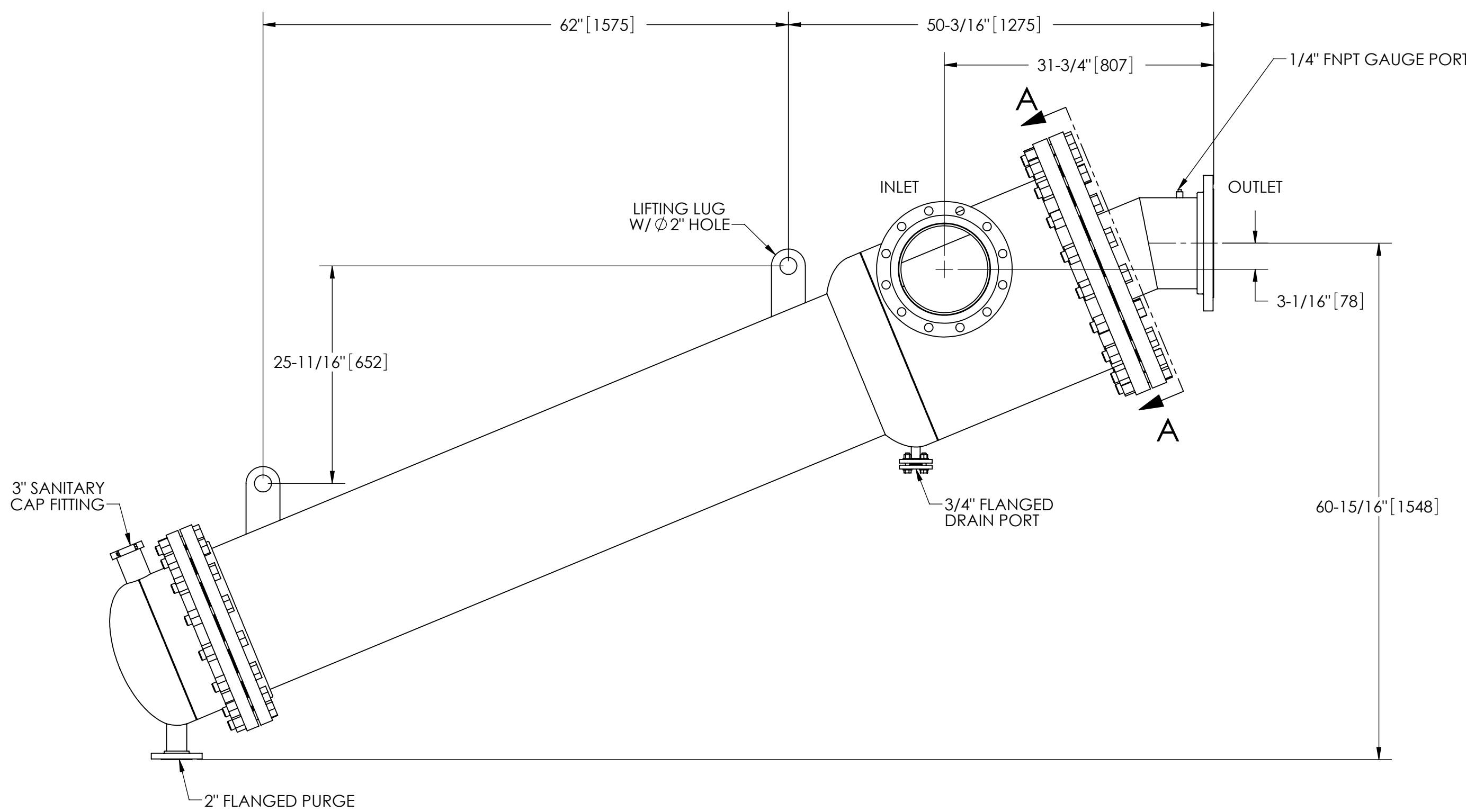


EXCEPT AS OTHERWISE PROVIDED BY CONTRACT, THIS DRAWING AND SPECIFICATIONS SHALL NOT BE REPRODUCED, COPIED OR USED AS THE BASIS FOR MANUFACTURE OR SALE OF MATTER DEPICTED HEREIN WITHOUT THE EXPRESSED WRITTEN PERMISSION OF THE CLAUDE LAVAL CORPORATION, OR ITS ASSIGNEES.

REVISIONS				
ZONE	REV.	DESCRIPTION	DATE	APPROVED

THIS DRAWING HAS BEEN GENERATED AND IS MAINTAINED BY A CAD SYSTEM. CHANGES SHALL ONLY BE INCORPORATED AS DIRECTED BY AN APPROVED ENGINEERING CHANGE ORDER (ECO). PAPER COPIES ARE UNCONTROLLED.

- NOTES:
1. INLET & OUTLET FLANGES ARE 10" 150# RF PER ANSI B16.5 REQUIRING 12X Ø7/8" BOLTS (BOLTS AND GASKETS NOT INCLUDED).
 2. MAXIMUM PRESSURE: 100 psi (6.9 bar).
 3. MAXIMUM TEMPERATURE: 400°F (204°C).
 4. PRESSURE LOSS: 3-12 psid (.2-.8 bar) AT RATED FLOW.
 5. RATED FLOW: 2300-4250 gpm (525-965 m³/hr).
 6. APPROXIMATE DRY WEIGHT: 1866 lbs (846 kg).
 7. FINISH: LAKOS BLUE (EXTERIOR ONLY).
 8. THREADED CONNECTIONS SEALED USING TELFON PASTE SEALANT JOHN CRANE JC-30 OR EQUIVALENT.
 9. GASKET: SPIRAL WOUND, 304 SS W/PTFE FILLER.



SUBMITTAL DRAWING
This drawing is submitted for spatial consideration only. Do not pre-plumb to these dimensions.

UNLESS OTHERWISE SPECIFIED: DIMENSIONS ARE IN: INCHES [mm] TOLERANCES ARE: FRACTIONS DECIMALS ANGLES ± 1/4" .XX ± .01 ± 1/4° .XXX ± .005 .XXXX ± .0005		ENGINEERED FOR: STANDARD		CLAUDE LAVAL CORP. FRESNO, CALIFORNIA 93727 WWW.LAKOS.COM		LAVAL UNDERGROUND SURVEYS	
DO NOT SCALE DRAWING		APPROVALS	DATE	TITLE			
MATERIAL	CLASS P-1 MILD CARBON STEEL	DRAWN	DLW	7/9/07	CSX-2300-HL, SEPARATOR, 2300-4250 gpm, CARBON STEEL		
FINISH	LAKOS BLUE	ENGR	DLW	7/9/07	SIZE	MODEL NO.	DWG NO.
		MFG	-	-	C		118201
		WORK ORDER		QTY.	SCALE	EST. WT.	SHEET
					1:12	1866 lb	1 OF 1