

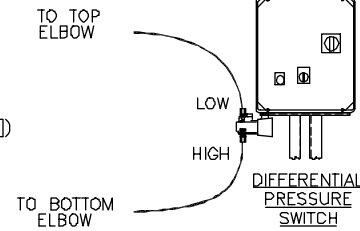
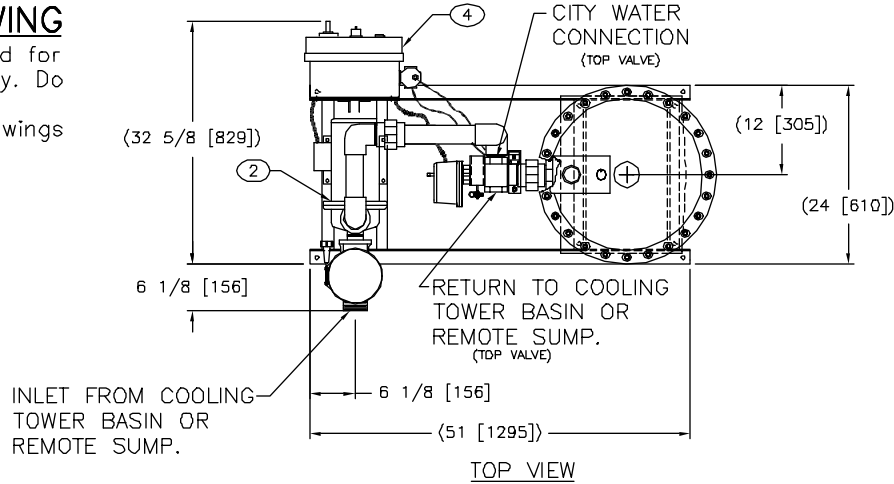
EXCEPT AS OTHERWISE PROVIDED BY CONTRACT, THIS DRAWING AND SPECIFICATIONS SHALL NOT BE REPRODUCED, COPIED OR USED AS THE BASIS FOR MANUFACTURE OR SALE OF MATTER DEPICTED HEREIN WITHOUT THE EXPRESSED WRITTEN PERMISSION OF THE CLAUDE LAVAL CORPORATION, OR ITS ASSIGNEES.

REVISIONS				
ZONE	REV	DESCRIPTION	DATE	APPROVED
-	A	ADDED BLINE SUPPORT.	6/9/03	<i>ADG</i>

THIS DRAWING HAS BEEN GENERATED AND IS MAINTAINED BY A CAD SYSTEM. CHANGES SHALL ONLY BE INCORPORATED AS DIRECTED BY AN APPROVED ENGINEERING CHANGE ORDER (ECO). PAPER COPIES ARE UNCONTROLLED.

SUBMITTAL DRAWING

This drawing is submitted for special consideration only. Do not pre-plumb to these dimensions. Certified drawings available upon request.

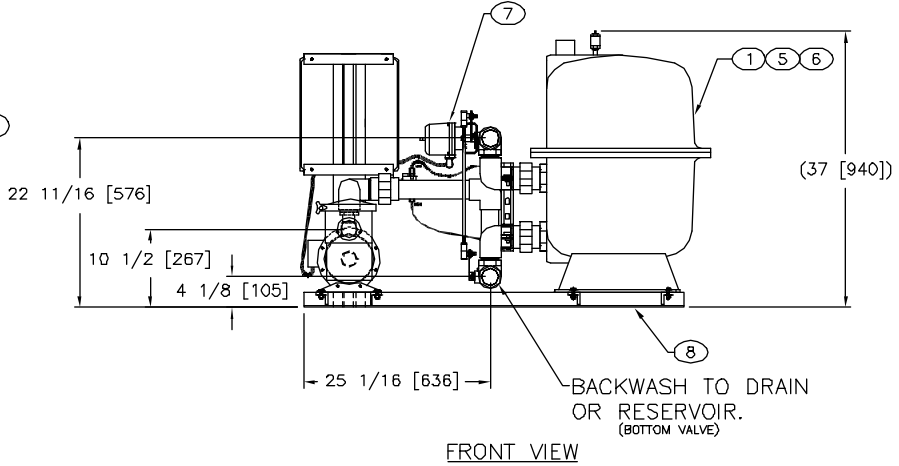
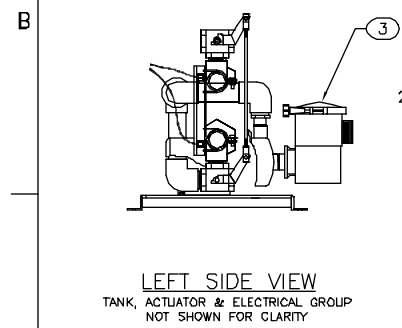


PRESSURE DIFFERENTIAL SETTINGS	
20" UNITS	= 13 PSI
24" UNITS	= 13 PSI
30" UNITS	= 16 PSI

TIMER SETTING	
ONE SHOT TIMER	= 180 SECS.

- NOTES:**
1. INLET IS 2" PIPE SIZE (FNPT).
 2. OUTLET IS 2" PIPE SIZE (FNPT).
 3. BACKWASH IS 2" PIPE SIZE (FNPT).
 4. MAXIMUM PRESSURE: 50 psi. (345 kPa).
 5. MAXIMUM TEMPERATURE: 125°F (51.7°C).
 6. SPECIFIED MAXIMUM FLOWRATE OF 45 GPM (10 m³/hr).
 7. SPECIFIED MINIMUM BACKWASH FLOW RATE OF 33 GPM (7.4 m³/hr).
 8. POWER REQUIREMENT: 480V, 3PH, 60HZ.
 9. NEMA 4X MOTOR STARTER ENCLOSURE WITH SAFETY DISCONNECT, H.O.A. SWITCH, BACKWASH TIMER AND BACKWASH CYCLE TIMER.
 10. APPROXIMATE DRY WEIGHT: 370 lbs (168 kg).
 11. MINIMUM PIPE SIZE AT FTS SYSTEM INLET IS 3" PIPE.
 12. FLOODED SUCTION REQUIRED.
 13. FINISH: AS ASSEMBLED.

- COMPONENT LIST:**
- 1 MEDIA TANK: 20" DIAMETER FIBERGLASS REINFORCED POLYESTER FILTER.
 - 2 PUMP: 1 HP CENTRIFUGAL, STAINLESS STEEL, 3500 rpm.
 - 3 PLASTIC BASKET STRAINER.
 - 4 ELECTRICAL CONTROL BOX: 480V 60HZ W/115V TRANSFORMER.
 - 5 MEDIA: 10 MICRON AT 95% EFFICIENCY - STANDARD.
5 MICRON AT 90% EFFICIENCY - OPTIONAL.
 - 6 UNDERDRAIN: PVC CENTER MANIFOLD, ABS COLLECTOR HUB FOR 16 ABS COLLECTOR LATERALS.
 - 7 ELECTRIC ACTUATOR: 120 V ELECTRICALLY ACTUATED 3-WAY BALL VALVES
 - 8 OPEN RAIL, STAINLESS STEEL SKID.



UNLESS OTHERWISE SPECIFIED: DIMENSIONS ARE IN: INCHES (mm) TOLERANCES ARE: FRACTIONS DECIMALS ANGLES ±1/2" ±.005 ±.01 ±1/4" DO NOT SCALE DRAWING SEE PARTS LIST	ENGINEERED FOR: STANDARD		LAKOS CLAUDE LAVAL CORP. 1385 N. CLOVIS AVE. FRESNO, CALIFORNIA 93727		LAKOS UNDRDRAIN FILTERS
	APPROVALS	DATE	TITLE	REV.	
MATERIAL	DRAWN NAC	4/17/02	FTS-20-045-A-C, HT MEDIA SYSTEM CITY BW, AUTO, FIBERGLASS 1 HP	REV. C	SCALE 1" = 1'
FINISH: AS ASSEMBLED	ENGR <i>ADG</i>	8/9/03	REV. C	MODEL NO. 119189	
WORK ORDER	DATE	QTY.	SCALE	SHEET 1 OF 1	

DWG. NO. 119189 SR 1 REV. A