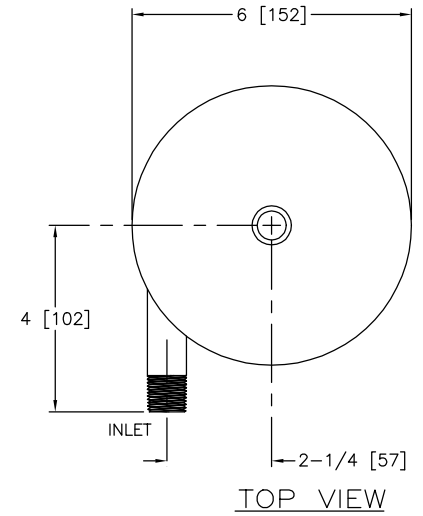
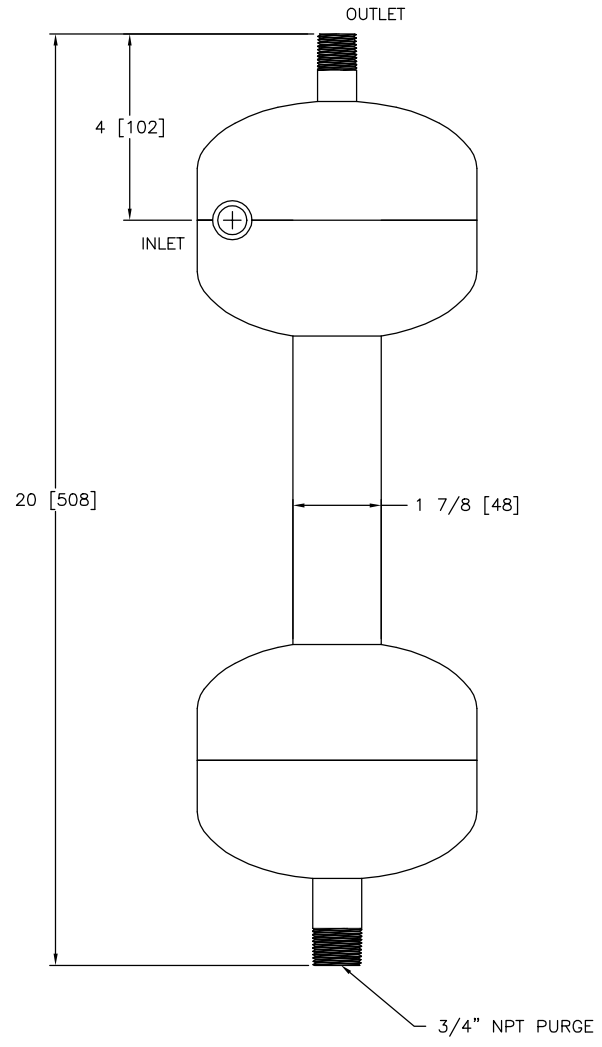


EXCEPT AS OTHERWISE PROVIDED BY CONTRACT, THIS DRAWING AND SPECIFICATIONS SHALL NOT BE REPRODUCED, COPIED OR USED AS THE BASIS FOR MANUFACTURE OR SALE OF MATTER DEPICTED HEREIN WITHOUT THE EXPRESSED WRITTEN PERMISSION OF THE CLAUDE LAVAL CORPORATION, OR ITS ASSIGNEES.

REVISIONS				
ZONE	REV	DESCRIPTION	DATE	APPROVED

THIS DRAWING HAS BEEN GENERATED AND IS MAINTAINED BY A CAD SYSTEM. CHANGES SHALL ONLY BE INCORPORATED AS DIRECTED BY AN APPROVED ENGINEERING CHANGE ORDER (ECO). PAPER COPIES ARE UNCONTROLLED.

- NOTES:
1. INLET AND OUTLET ARE 1/2" NPT.
 2. MAXIMUM PRESSURE: 150 psi (1034 kPa).
 3. PRESSURE LOSS: 5.0-12.0 psi AT RATED FLOW.
 4. RATED FLOW: 4-10 gpm (1.0-2.5 m³/hr)
 5. APPROXIMATE DRY WEIGHT: 12 lbs (5.4 Kg).
 6. FINISH: LAKOS BLUE (EXTERIOR ONLY).



SUBMITTAL DRAWING

This drawing is submitted for special consideration only. Do not pre-plumb to these dimensions.

UNLESS OTHERWISE SPECIFIED: DIMENSIONS ARE IN: INCHES [mm] TOLERANCES ARE: FRACTIONS DECIMALS ANGLES ±1/4 .005 ±.005 ±1/4° DO NOT SCALE DRAWING	ENGINEERED FOR: STANDARD		CLAUDE LAVAL CORP. 1365 N. CLOVIS AVE. FRESNO, CALIFORNIA 93727		
	APPROVALS	DATE	TITLE		
MATERIAL CLASS P-1 MILD CARBON STEEL	DRAWN GERALD	6/24/97	ILB-0050, SEPARATOR, 1/2" NPT INLINE, CS		
FINISH LAKOS BLUE	ENGR β	8/2/00	SIZE C	MODEL NO.	DWG NO. 100288
	WORK ORDER	QTY.	SCALE 1/2	EST. WT.	SHEET 1 OF 1

DWG NO. 100288