

EXCEPT AS OTHERWISE PROVIDED BY CONTRACT, THIS DRAWING AND SPECIFICATIONS SHALL NOT BE REPRODUCED, COPIED OR USED AS THE BASIS FOR MANUFACTURE OR SALE OF WATER DEPicted HEREIN WITHOUT THE EXPRESSED WRITTEN PERMISSION OF THE CLAUDE LAVAL CORPORATION, OR ITS ASSIGNEES.

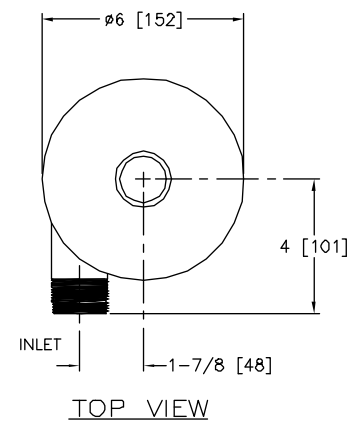
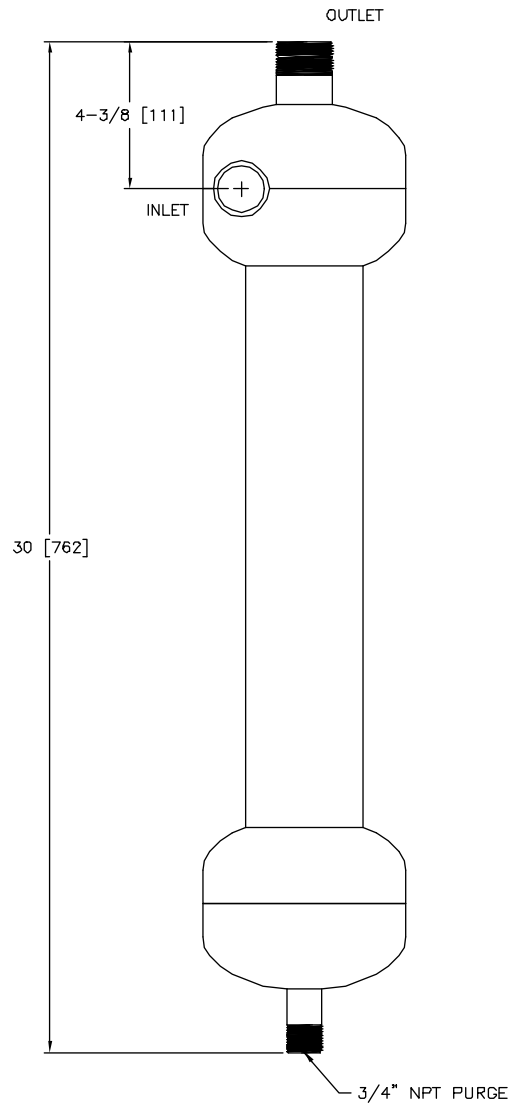
NOTES:

1. INLET AND OUTLET ARE 1-1/4" NPT.
2. MAXIMUM PRESSURE: 150 psi (1034 kPa).
3. PRESSURE LOSS: 5.0-12.0 psi AT RATED FLOW.
4. RATED FLOW: 28-48 gpm (6-11 m³/hr).
5. APPROXIMATE DRY WEIGHT: 25 lbs (11 Kg).

REVISIONS				
ZONE	REV	DESCRIPTION	DATE	APPROVED

THIS DRAWING HAS BEEN GENERATED AND IS MAINTAINED BY A CAD SYSTEM. CHANGES SHALL ONLY BE INCORPORATED AS DIRECTED BY AN APPROVED ENGINEERING CHANGE ORDER (ECO). PAPER COPIES ARE UNCONTROLLED.

D
C
B
A



SUBMITTAL DRAWING

This drawing is submitted for spacial consideration only. Do not pre-plumb to these dimensions. Certified drawings available upon request.

<small>UNLESS OTHERWISE SPECIFIED: DIMENSIONS ARE IN INCHES (mm) TOLERANCES ARE: FRACTIONS DECIMALS ANGLES ±1/4 .005 ±.01 ±1/4° ±1/8 .003 ±.005 ±1/8° DO NOT SCALE DRAWING</small>	<small>ENGINEERED FOR:</small> STANDARD	LAKOS CLAUDE LAVAL CORP. 1365 N. CLOVIS AVE. FRESNO, CALIFORNIA 93727	
	<small>APPROVALS</small> DATE BY: R. JONES 8/12/95		
<small>WORKING CLASS P-1 MIL D. CARRIER STEFFI</small>	<small>REVIEWED</small>	<small>LAVAL UNDERGROUND SERVICE</small>	