

EXCEPT AS OTHERWISE PROVIDED BY CONTRACT, THIS DRAWING AND SPECIFICATIONS SHALL NOT BE REPRODUCED, COPIED OR USED AS THE BASIS FOR MANUFACTURE OR SALE OF MATTER DEPICTED HEREIN WITHOUT THE EXPRESSED WRITTEN PERMISSION OF THE CLAUDE LAVAL CORPORATION, OR ITS ASSIGNEES.

NOTES:

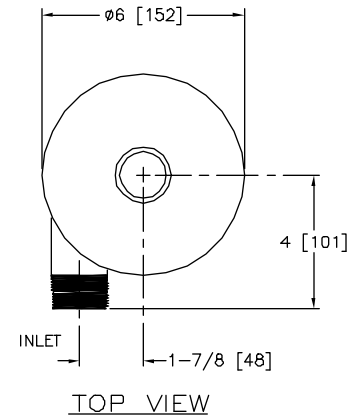
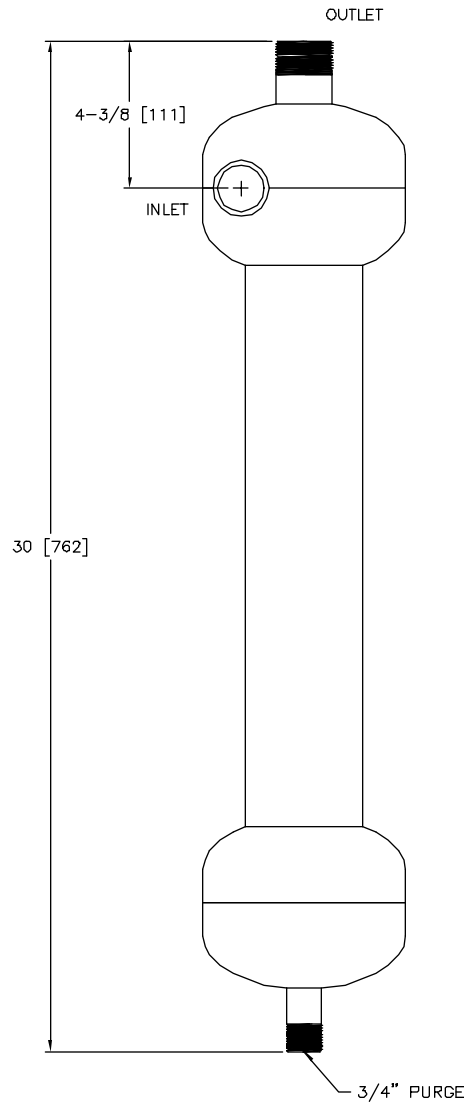
1. INLET AND OUTLET ARE 1-1/4" BSP.
2. MAXIMUM PRESSURE: 150 psi (1034 kPa).
3. PRESSURE LOSS: 5.0-12.0 psi AT RATED FLOW.
4. RATED FLOW: 28-48 gpm (6-11 m<sup>3</sup>/hr).
5. APPROXIMATE DRY WEIGHT: 25 lbs (11 Kg).

**SUBMITTAL DRAWING**

This drawing is submitted for spacial consideration only. Do not pre-plumb to these dimensions. Certified drawings available upon request.

REVISIONS				
ZONE	REV	DESCRIPTION	DATE	APPROVED

THIS DRAWING HAS BEEN GENERATED AND IS MAINTAINED BY A CAD SYSTEM. CHANGES SHALL ONLY BE INCORPORATED AS DIRECTED BY AN APPROVED ENGINEERING CHANGE ORDER (ECO). PAPER COPIES ARE UNCONTROLLED.



TOP VIEW

UNLESS OTHERWISE SPECIFIED: DIMENSIONS ARE IN: INCHES (mm)		DESIGNED FOR: STANDARD		LAKOS OLAUDE LAVAL CORP. 1365 N. CLOVIS AVE. FRESNO, CALIFORNIA 93727		LAKOS UNDERWRITING SURETY	
TOLERANCES ARE: FRACTIONS DECIMALS ANGLES ±1/4" ±0.005 ±1/4"		APPROVALS	DATE	TITLE	ILS-0125/BSP, SEPARATOR, 1-1/4" BSP INLINE, SS 316L		
DO NOT SCALE DRAWING		DRAWN	8/30/97	REVISED	SIZE	MODEL NO.	DWG NO.
MATERIAL TYPE 316L STAINLESS STEEL		ENGR			C		107512
FINISH	GLASS BLAST	WORK ORDER	QTY.	SCALE	3/8	EST. WGT.	SHEET A1 OF A1

DWG. NO. 107512

SH. 1 REV.

A