

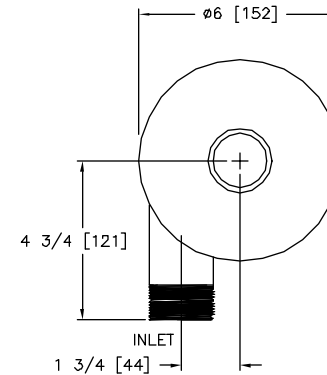
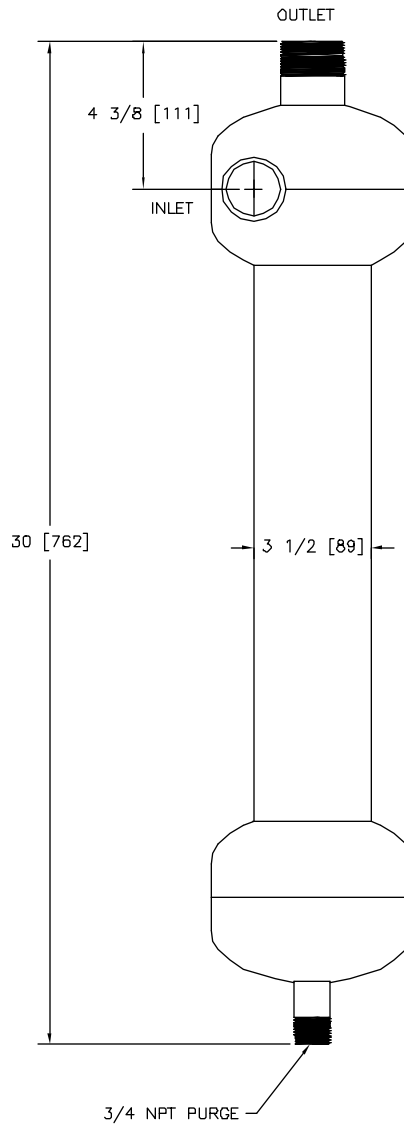
EXCEPT AS OTHERWISE PROVIDED BY CONTRACT, THIS DRAWING AND SPECIFICATIONS SHALL NOT BE REPRODUCED, COPIED OR USED AS THE BASIS FOR MANUFACTURE OR SALE OF WATER DEPICTED HEREIN WITHOUT THE EXPRESSED WRITTEN PERMISSION OF THE CLAUDE LAVAL CORPORATION, OR ITS ASSIGNEES.

REVISIONS				
ZONE	REV	DESCRIPTION	DATE	APPROVED
B-2	A	ECO # 1015	12/18/95	

THIS DRAWING HAS BEEN GENERATED AND IS MAINTAINED BY A CAD SYSTEM. CHANGES SHALL ONLY BE INCORPORATED AS DIRECTED BY AN APPROVED ENGINEERING CHANGE ORDER (ECO). PAPER COPIES ARE UNCONTROLLED.

NOTES:

1. INLET AND OUTLET ARE 1 1/2" NPT.
2. MAXIMUM PRESSURE: 150 psi (10.3 Bar).
3. MAXIMUM TEMPERATURE: 180°F (82.2°C).
4. PRESSURE LOSS: 5.0-12.0 psi (0.3-0.8 bar) AT RATED FLOW.
5. RATED FLOW 45-70 gpm (10-16 m³/hr).
6. APPROXIMATE DRY WEIGHT: 30 lbs (13.5 kg).



TOP VIEW

SUBMITTAL DRAWING

This drawing is submitted for spatial consideration only. Do not pre-plumb to these dimensions.

UNLESS OTHERWISE SPECIFIED: DIMENSIONS ARE IN INCHES (MM) TOLERANCES ARE: FRACTIONS DECIMALS ± 1/4" ± 0.005 ± 1/4" DO NOT SCALE DRAWING	ENGINEERED FOR: STANDARD	LAKES CLAUDE LAVAL CORP. 1365 N. CLOVIS AVE. FRESNO, CALIFORNIA 93727	LAVAL UNDERGROUND DIVISION
APPROVALS	DATE	TITLE	
DRAWN R. JONES	5/17/95	ILS-0150, SEPARATOR, 45-70 gpm, 316L SS	
ENGR β	11/4/90	SIZE	MODEL NO.
FINISH GLASSBLAST	WORK ORDER	C	100297
	QTY.	SCALE	REV. A
		3/8	1 OF 1

DWG NO. 100297

A