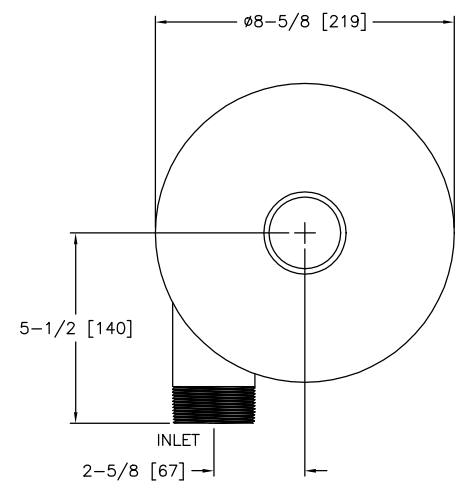
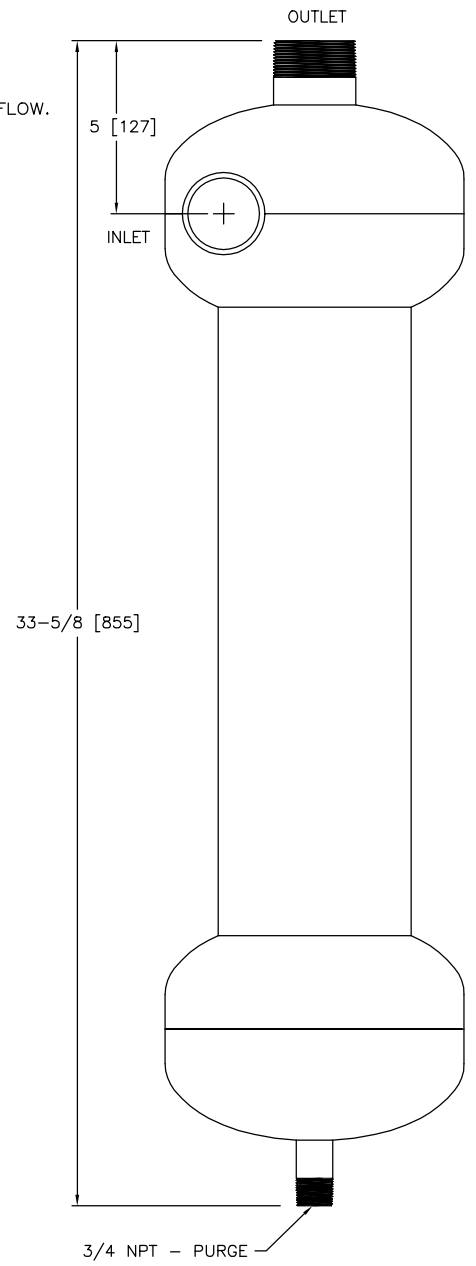


EXCEPT AS OTHERWISE PROVIDED BY CONTRACT, THIS DRAWING AND SPECIFICATIONS SHALL NOT BE REPRODUCED, COPIED OR USED AS THE BASIS FOR MANUFACTURE OR SALE OF MATTER DEPICTED HEREIN WITHOUT THE EXPRESSED WRITTEN PERMISSION OF THE CLAUDE LAVAL CORPORATION, OR ITS ASSIGNEES.

REVISIONS				
ZONE	REV	DESCRIPTION	DATE	APPROVED

THIS DRAWING HAS BEEN GENERATED AND IS MAINTAINED BY A CAD SYSTEM. CHANGES SHALL ONLY BE INCORPORATED AS DIRECTED BY AN APPROVED ENGINEERING CHANGE ORDER (ECO). PAPER COPIES ARE UNCONTROLLED.

- NOTES:
1. INLET AND OUTLET ARE 2" NPT.
  2. MAXIMUM PRESSURE: 150 psi (1034 kPa).
  3. PRESSURE LOSS: 5.0–12.0 psi [34.47–82.74 kPa] AT RATED FLOW.
  4. RATED FLOW: 65–108 gpm (15–25 m<sup>3</sup>/hr)
  5. APPROXIMATE DRY WEIGHT: 48 lbs (21.8 kg).



TOP VIEW

**SUBMITTAL DRAWING**

This drawing is submitted for special consideration only. Do not pre-plumb to these dimensions. Certified drawings available upon request.

<small>UNLESS OTHERWISE SPECIFIED: DIMENSIONS ARE IN INCHES (MM) TOLERANCES ARE: FRACTIONS DECIMALS ANGLES +1/4 .005 .01 ±1/4° DO NOT SCALE DRAWING</small>	ENGINEERED FOR: <b>STANDARD</b>	<small>APPROVALS</small> <table border="1"> <tr> <td>DATE</td> <td>5/5/97</td> </tr> </table>		DATE	5/5/97	<small>CLAUDE LAVAL CORP. 1365 N. CLOVIS AVE. FRESNO, CALIFORNIA 93727</small>		<small>LAVAL UNDERGROUND SERVICES</small>
	DATE	5/5/97						
<small>MATERIAL:</small> TYPE 316L STAINLESS STEEL	<small>DRAWN</small> R. JONES	<small>REVIEWED</small> 	<small>TITLE</small> <b>ILS-0200, SEPARATOR, 2" NPT INLINE, SS 316L</b>					
<small>FINISH:</small> GLASS-BLAST	<small>ENGR</small> β	<small>DATE</small> 6/18/01	<small>QTY.</small> 	<small>SIZE</small> C	<small>MODEL NO.</small> 	<small>DWG NO.</small> 100299	<small>REV.</small> 	
<small>SCALE</small> 3/8			<small>EST. NO.</small>	<small>SHEET</small> 1 OF 1				

PART NO. 100299  
 REV. 1