

EXCEPT AS OTHERWISE PROVIDED BY CONTRACT, THIS DRAWING AND SPECIFICATIONS SHALL NOT BE REPRODUCED, COPIED OR USED AS THE BASIS FOR MANUFACTURE OR SALE OF MATTER DEPICTED HEREIN WITHOUT THE EXPRESSED WRITTEN PERMISSION OF THE CLAUDE LAVAL CORPORATION, OR ITS ASSIGNEES.

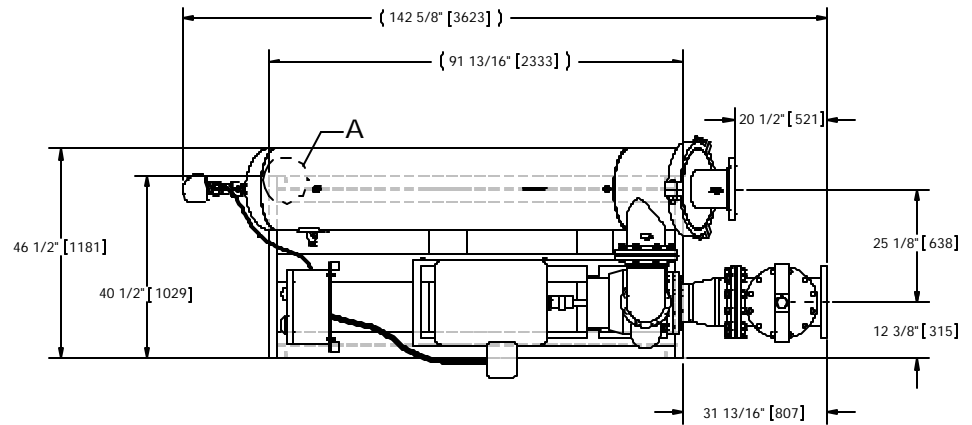
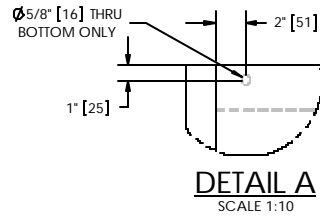
REVISION HISTORY				
ZONE	REV	DESCRIPTION	DATE	APPROVED

NOTES:

1. INLET IS 10" PIPE (125# ANSI FLANGED).
2. OUTLET IS 8" PIPE (150# ANSI FLANGED).
3. PURGE OUTLET IS 1-1/2" PIPE.
4. MAXIMUM PRESSURE: 150 psi (10.3 bar).
5. MAXIMUM TEMPERATURE: 100°F (37.8°C).
6. SPECIFIED FLOWRATE OF 1670 gpm (380 m³/hr).
7. FINISH: AS ASSEMBLED.
8. POWER REQUIREMENT: 460V, 3PH, 60Hz.
9. APPROXIMATE DRY WEIGHT: 4331 lbs (1965 kg).
10. MINIMUM PIPE FROM TOWER BASIN TO TC SYSTEM IS 10" PIPE.
11. FLOODED SUCTION REQUIRED.

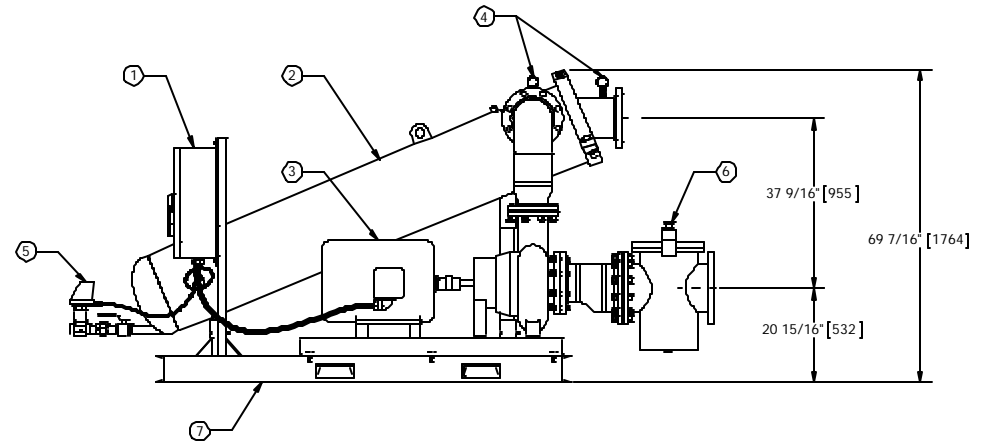
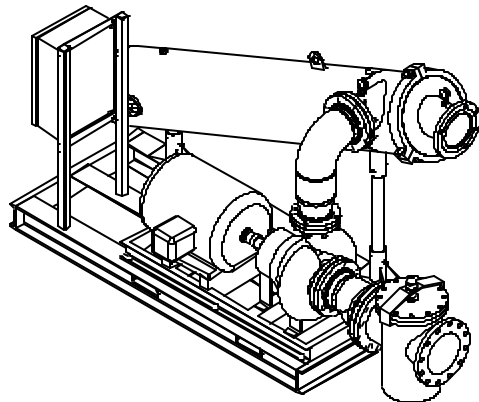
COMPONENT LIST:

- ① ELECTRICAL CONTROL BOX 460V 60HZ W/115V TRANSFORMER.
- ② SEPARATOR: HTX-0810-L/FLG.
- ③ PUMP: ARMSTRONG SERIES 4030 8x6x11.5 CENTRIFUGAL, 11.09" IMP, 60 HP, 1750 rpm, 460V, 60Hz.
- ④ INLET/OUTLET PRESSURE GAUGES: 0-100 psi, GLYCERIN-FILLED.
- ⑤ PURGE EQUIPMENT: ABV-15-120.
- ⑥ BASKET STRAINER 10" WITH 5/32 PERFORATION.
- ⑦ SKID: CARBON STEEL, EPOXY COATED.



SUBMITTAL DRAWING

This drawing is submitted for spatial consideration only. Do not pre-plumb to these dimensions.



UNLESS OTHERWISE SPECIFIED: DIMENSIONS ARE IN: INCHES (mm) TOLERANCES ARE: FRACTIONS DECIMALS ANGLES ± .1" ± .01 ± .14" ± .005 ± .005 ± .005	ENGINEERED FOR: ABV		LAKOS CLAUDE LAVAL CORP. FRESNO, CALIFORNIA 93727 WWW.LAKOS.COM	LAKOS LAVAL UNDERGROUND SURVEYS
	APPROVALS	DATE		
DO NOT SCALE DRAWING	DRAWN ADJ	9/16/05	TITLE TCX-1670-ABV/L, TC SYSTEM, SWEEPER HTX-0810-L, 3/60/460V DELUXE	
MATERIAL PER LAKOS SPEC	ENGR DLW	9/16/05	SCALE 1:20	REV C
FINISH AS ASSEMBLED	MFG -	-	MODEL NO.	DWG NO. 125107
	WORK ORDER	QTY.	NET WT 4331 lb	SHEET 01 1 OF 1