

# LAKOS Auto Purge with Motorized Pinch Valve

*AKE Series*

*Heavy-duty pinch valve for industry's toughest purging applications.*

This electricity-powered pinch valve (no compressed air requirement) features heavy-wall rubber construction for extended duty in tough applications. Closure is actuated by two opposing gear-driven cams. Teamed with the LAKOS AutoPurge Controller for maximum purging options, this valve provides durability and dependability.

- Full flow-through design
- Only one wetted component
- No flange-gasket requirements; meets ANSI standards
- Bubble-tight closure, even when solids are present
- Maximum operating pressure of 125 psi (8.6 bar)
- Temperature range of the valve: -40 to 275°F (consult factory for higher temperatures)
- Corrosion-resistant vinylester-fiberglass construction

## Controller

- Serves worldwide single-phase voltages, from 100 to 240 VAC, 50/60Hz (5 amp max.) Consult factory for additional voltage options
- Wide range of options for programming purge cycle frequency and duration
- Solid state reliability; no routine maintenance required
- Durable NEMA-4x rated housing; IP 66 equivalent
- Compression molded, fiberglass reinforced polyester housing
- Meets CSA, UL, and CE requirements
- Non-volatile memory - all controller settings are maintained in the event of a loss of power; no programming required

SUGGESTED INSTALLATION

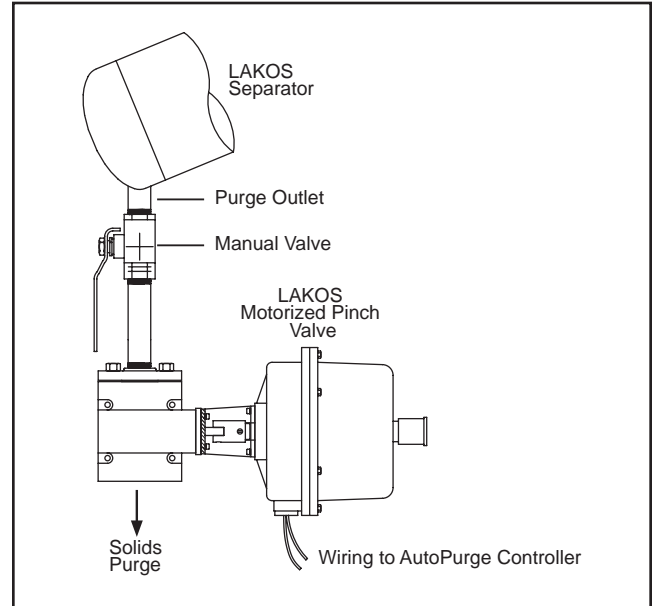
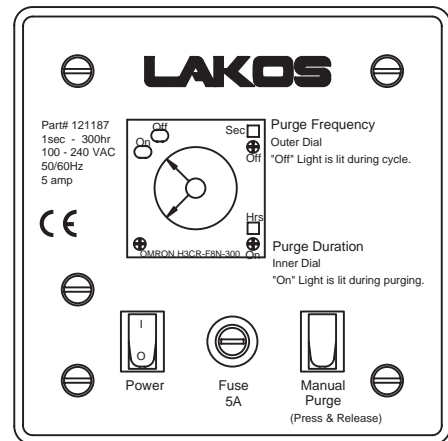
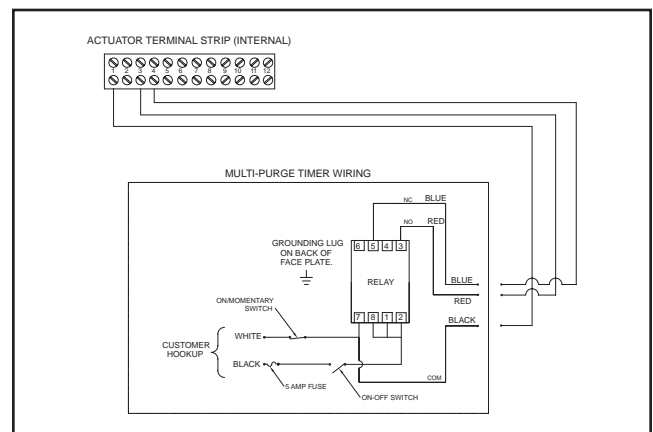


ILLUSTRATION OF CONTROLLER FACE



WIRING DIAGRAM



See reverse for additional specifications

## Motorized Pinch Valve

**Operation:** The controller must be set for purge frequency and purge duration. Recommended minimum purging duration: 20-30 seconds. See details on front page for controller.

The LAKOS AKE Motorized Pinch Valve closes when power is applied to the motor via the controller, activating two opposing gear-driven cams to effectively press the valve liner closed. Upon completion of the programmed purge duration, the gear-driven cams similarly activate to re-open the valve port.

**Installation:** See illustration on front page. It is recommended that a manual valve be installed between the LAKOS Separator and the LAKOS AKE Motorized Pinch Valve to allow for shutting-off purge flow for servicing the AKE Valve if necessary. This manual valve is not provided with the LAKOS AKE Valve.

Valve may be installed in any configuration, but purge flow should be downward from the LAKOS Separator. Avoid uphill piping, elbows and turns which could create clogging or troublesome accumulation of solids in the purge line piping.

Valve Model	Line Size Flanged	Valve Weight	
		lbs.	kg
AKE-07	3/4-inch	5	2.3
AKE-10	1-inch	5.5	2.5
AKE-15	1-1/2-inch	9.4	4.3
AKE-20	2-inch	14.5	6.6
AKE-30	3-inch	22.8	10.3

## Liquid Loss

When the application allows that purging is the final handling of the separated solids, it may be important to know the volume of fluid which may be lost when purging. This information is subject to variations, based on separator size, flow rate and system pressure. Volumes noted here identify the total volume purged (both liquid and solids).

Lakos Separators are manufactured and sold under one or more of the following U.S. Patents: 3,289,608; 3,512,651; 3,568,837; 3,701,425; 3,947,364; 3,963,073; 4,027,481; 4,120,795; 4,123,800; 4,140,638; 4,147,630; 4,148,735; 4,305,825; 4,555,333; 5,320,747; 5,338,341; 5,368,735; 5,425,876; 5,571,416; 5,578,203; 5,622,545; 5,653,874; 5,894,995; 6,090,276; 6,143,175; 6,167,960; 6,202,543; Des. 327,693; and corresponding foreign patents, including 600 12 329.4-08 (Germany) and EP 1 198 276 B1 (EU); other U.S. and foreign patents pending.

Purge Size	10 Second Duration*
3/4-inch	3-12 gallons 12-45 liters
1 1/2-inch	12-50 gallons 45-190 liters
2-inch	25-95 gallons 95-360 liters

\*Motorized ball valves require a minimum purge duration of 10 seconds.

## Limited Warranty

All products manufactured and marketed by this Corporation are warranted to be free of defects in material or workmanship for a period of one year from date of delivery.

If a fault develops, notify us, giving a complete description of the alleged malfunction. Include the model number(s), date of delivery and operating conditions of subject product(s). We will subsequently review this information and, at our option, supply you with either servicing data or shipping instructions and returned goods authorization. Upon prepaid receipt of subject product(s) at the instructed designation, we will then either replace such product(s) at our option and, if determined to be a warranted defect, we will perform such necessary product repairs or replace such product(s) at our expense.

This limited warranty does not cover any products, damages or injuries resulting from misuse, neglect, accident, normal expected wear, improper installation or operation contrary to factory recommendations. Nor does it cover equipment that has been modified, tampered with or altered without factory authorization.

No other extended liabilities are stated or implied and this warranty in no event covers incidental or consequential damages, injuries or costs resulting from any such defective product(s).

# LAKOS®

1365 N. Clovis Avenue • Fresno, California 93727 USA  
Telephone: (559) 255-1601 • Fax: (559) 255-8093  
Toll-Free: (800) 344-7205 (USA, Canada & Mexico)  
www.lakos.com • E-mail: info@lakos.com