

4

3

2

1

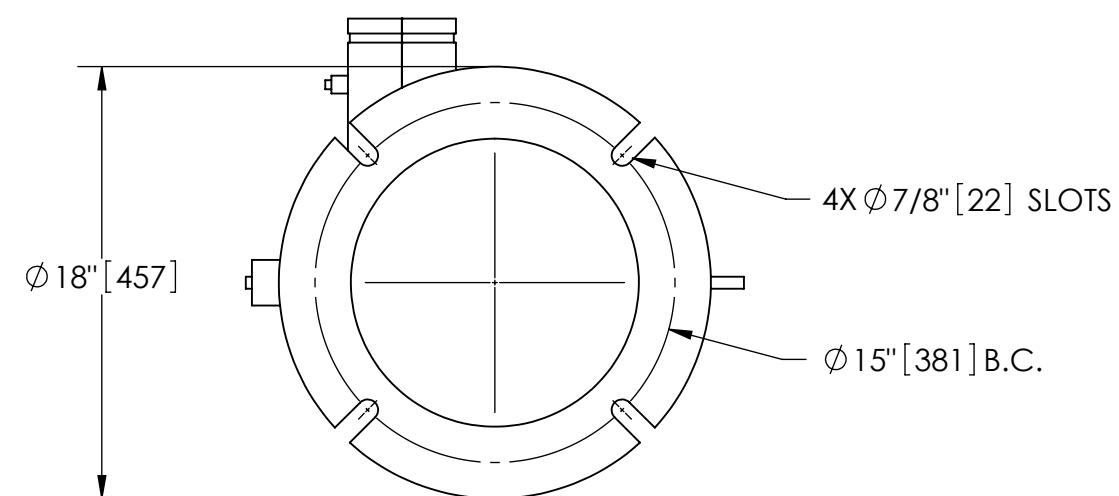
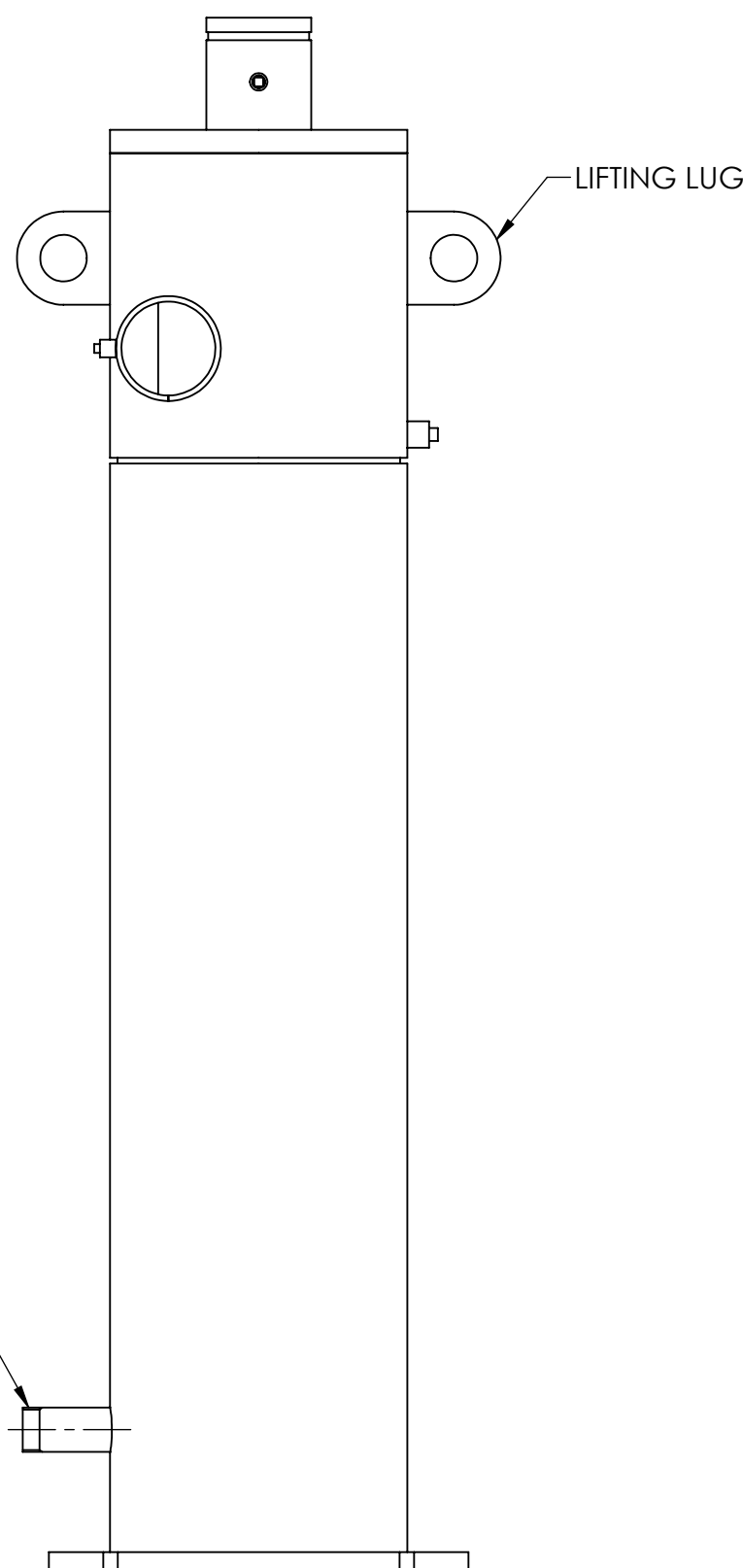
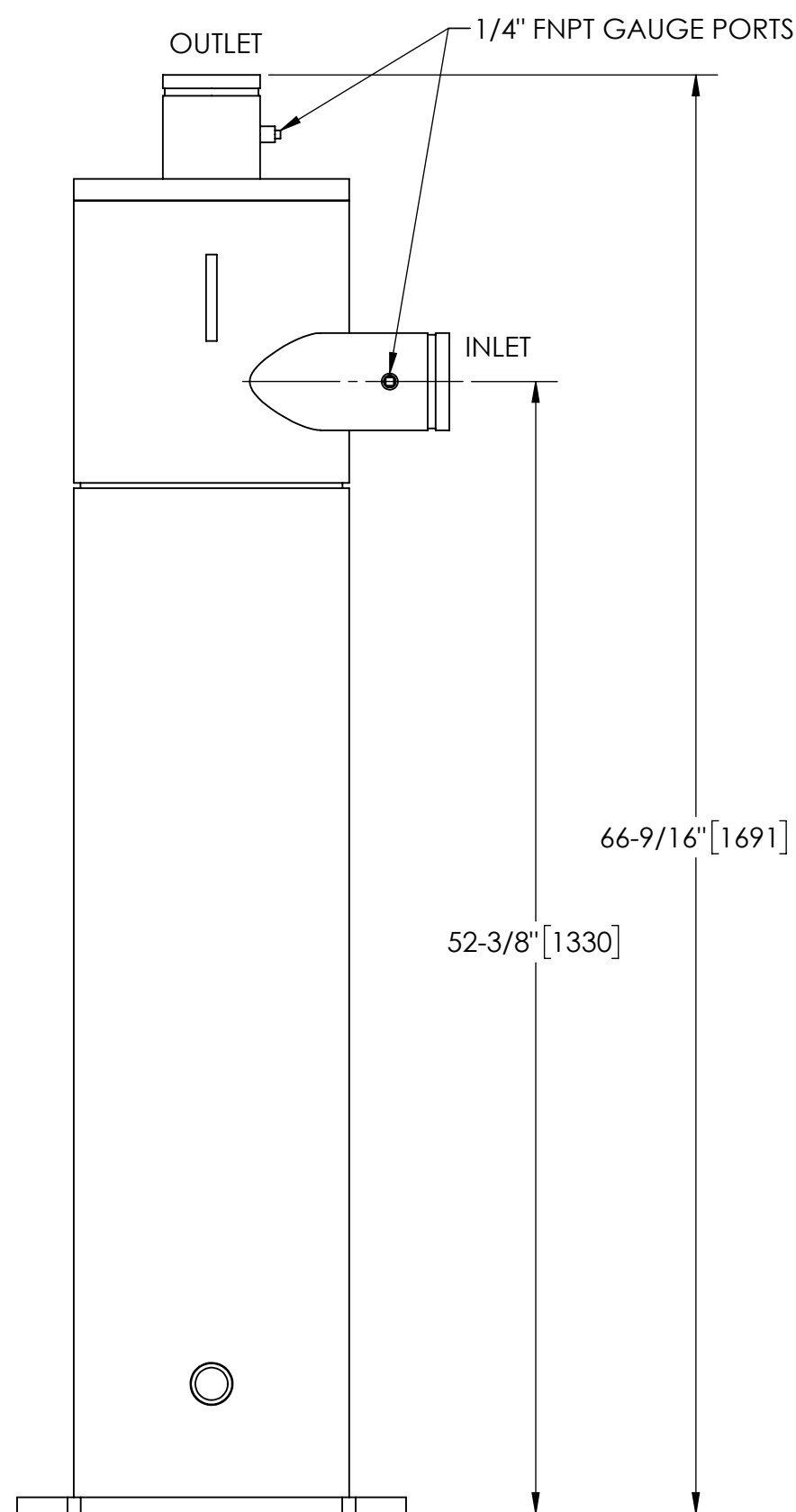
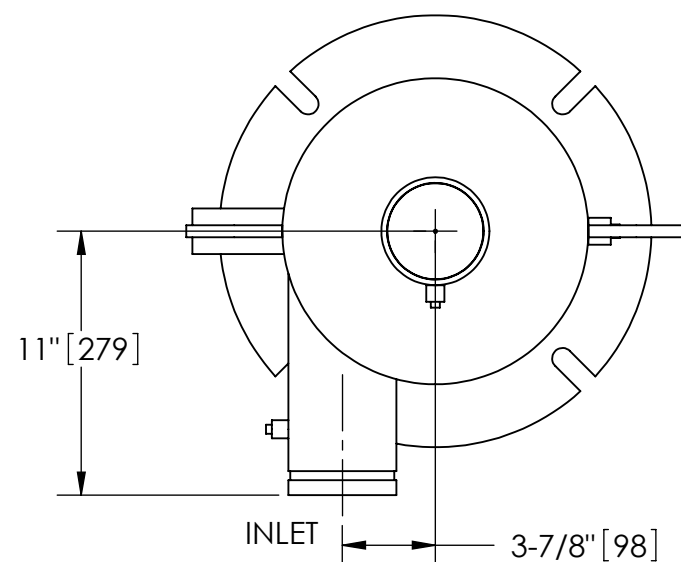
EXCEPT AS OTHERWISE PROVIDED BY CONTRACT, THIS DRAWING AND SPECIFICATIONS SHALL NOT BE REPRODUCED, COPIED OR USED AS THE BASIS FOR MANUFACTURE OR SALE OF MATTER DEPICTED HEREIN WITHOUT THE EXPRESSED WRITTEN PERMISSION OF THE LAKOS CORPORATION, OR ITS ASSIGNEES.

NOTES:

1. INLET & OUTLET ARE 4" GROOVED PIPE.
2. MAXIMUM PRESSURE: 150 psi (10.3 bar).
3. MAXIMUM TEMPERATURE: 180°F (82.2°C).
4. PRESSURE LOSS: 3-12 psid (.2-.8 bar) AT RATED FLOW.
5. RATED FLOW: 285-525 gpm (65-120 m³/hr).
6. APPROXIMATE DRY WEIGHT: 390 lbs (177 kg).
7. FINISH: LAKOS BLACK (EXTERIOR ONLY).

THIS DRAWING HAS BEEN GENERATED AND IS MAINTAINED BY A CAD SYSTEM. CHANGES SHALL ONLY BE INCORPORATED AS DIRECTED BY AN APPROVED ENGINEERING CHANGE ORDER (ECO). PAPER COPIES ARE UNCONTROLLED.


REVISION HISTORY				
ZONE	REV	DESCRIPTION	DATE	APPROVED
	F	REPLACED P/N 106675 TO X. ADDED CRIT DIM.	6/23/14	EBD



BOTTOM VIEW

SUBMITTAL DRAWING

This drawing is submitted for spatial consideration only. Do not pre-plumb to these dimensions.

UNLESS OTHERWISE SPECIFIED: DIMENSIONS ARE IN: INCHES (mm) TOLERANCES ARE: FRACTIONS DECIMALS ANGLES ± 1/4" .XX ± .01 ± 1/4° .XXX ± .005 .XXXX ± .0005		ENGINEERED FOR: STANDARD		 FRESNO, CALIFORNIA WWW.LAKOS.COM	
DO NOT SCALE DRAWING		APPROVALS	DATE		
MATERIAL	CLASS P-1 MILD CARBON STEEL	DRAWN	RJ/LC	6/29/05	TITLE
FINISH	LAKOS BLACK	ENGR	b	1/30/06	HTH-0285-V, SEPARATOR, 285-525 GPM, CARBON STEEL
		REVIEW	-	-	SIZE
		WORK ORDER			MODEL NO.
					DWG NO.
					115074
					REV.
					F
					SCALE
					1:8
					EST. WT.
					390 lb
					SHEET
					1 OF 1

4

3

2

1

DWG NO.

115074

SHEET

1

REV.

F

A