

EXCEPT AS OTHERWISE PROVIDED BY CONTRACT, THIS DRAWING AND SPECIFICATIONS SHALL NOT BE REPRODUCED, COPIED OR USED AS THE BASIS FOR MANUFACTURE OR SALE OF MATTER DEPICTED HEREIN WITHOUT THE EXPRESSED WRITTEN PERMISSION OF THE LAKOS CORPORATION, OR ITS ASSIGNEES.

THIS DRAWING HAS BEEN GENERATED AND IS MAINTAINED BY A CAD SYSTEM. CHANGES SHALL ONLY BE INCORPORATED AS DIRECTED BY AN APPROVED ENGINEERING CHANGE ORDER (ECO). PAPER COPIES ARE UNCONTROLLED.

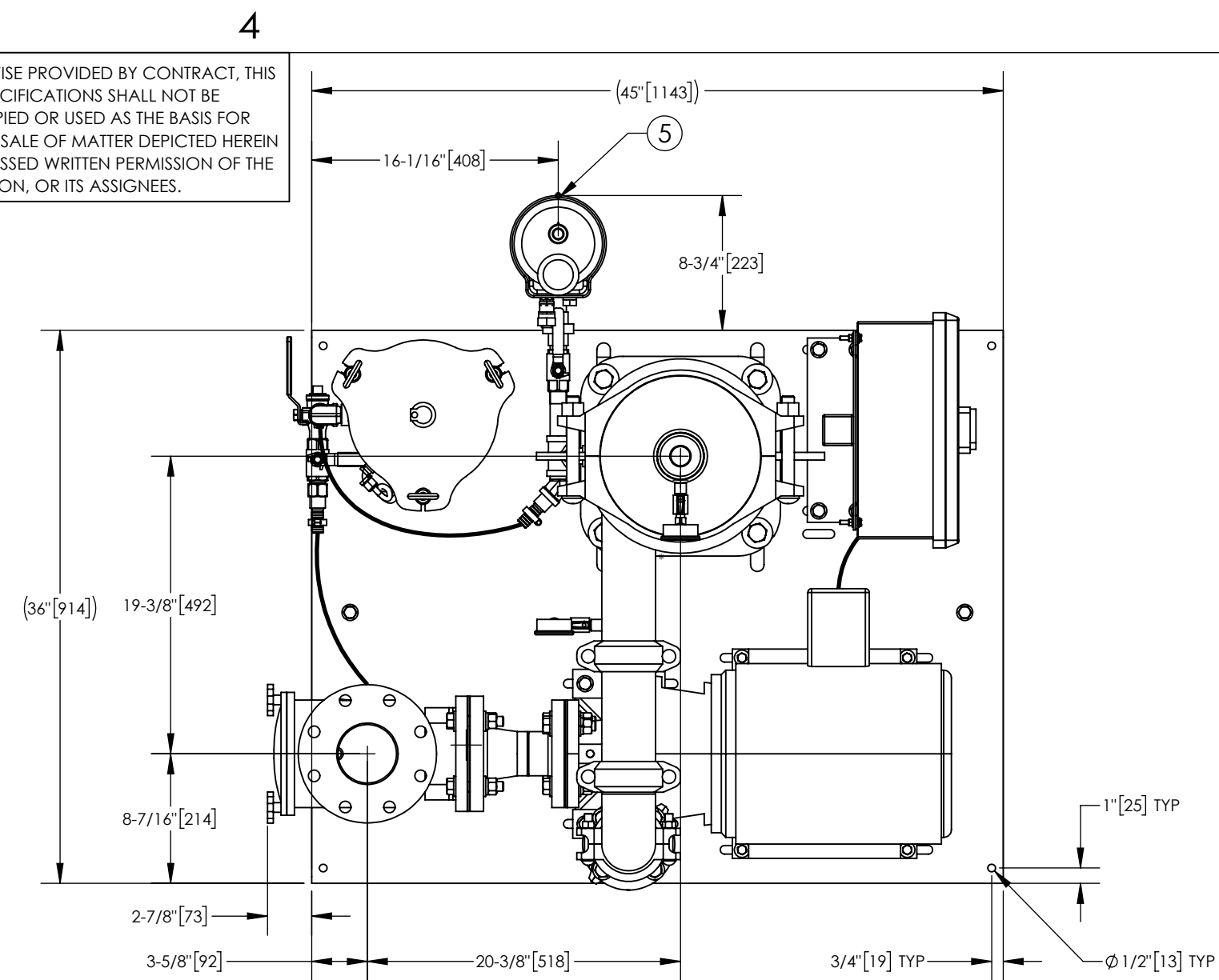
REVISION HISTORY				
ZONE	REV	DESCRIPTION	DATE	APPROVED
	01	RELEASED FOR SUBMITTAL	1/7/21	AAM

NOTES:

- INLET IS 4" FLANGED (125# ANSI FLANGED).
- OUTLET IS 3" PIPE (GROOVED).
- PURGE OUTLET IS 3/4" PIPE.
- MAXIMUM PRESSURE: 150 psi (10.3 bar).
- MAXIMUM FLUID OPERATING TEMPERATURE: 100°F (37.8°C).
- MAXIMUM AMBIENT AIR TEMPERATURE: 100°F (37.8°C).
- SPECIFIED FLOW RATES:
 BASIN SWEEPING - 210 gpm (48 m³/hr).
 SIDE STREAM & CLOSED LOOP- 250 gpm (57 m³/hr).
- FINISH: AS ASSEMBLED.
- POWER REQUIREMENT: 3/60/208-230,460V. (CUSTOMER SPECIFIED)
- NEMA 4X MOTOR STARTER ENCLOSURE WITH SAFETY DISCONNECT AND H.O.A. SWITCH.
- APPROXIMATE DRY WEIGHT: 1032 lbs (468 kg).
- INLET/OUTLET VALVE KIT RECOMMENDED: SEE FACTORY.
- MINIMUM PIPE FROM TOWER BASIN TO TC SYSTEM IS 4" PIPE.
- FLOODED SUCTION REQUIRED.

COMPONENT LIST:

- ELECTRICAL CONTROL BOX: 3/60/208-230,460V, W/120V TRANSFORMER.
- SEPARATOR: eHTX-0090-V.
- PUMP: 7.5 HP CENTRIFUGAL, 1750 rpm, 3/60/208-230,460V.
- INLET/OUTLET PRESSURE GAUGES: 0-160 psi, GLYCERIN-FILLED.
- PURGE EQUIPMENT: SRV-0833, EFS-07-120V.
- DIFFERENTIAL PRESSURE INDICATOR:
 (AVAILABLE WITH DRY ELECTRIC CONTACT-MODEL DHE-15-S. ORDER SEPARATELY).
- STRAINER, SUCTION DIFFUSER.

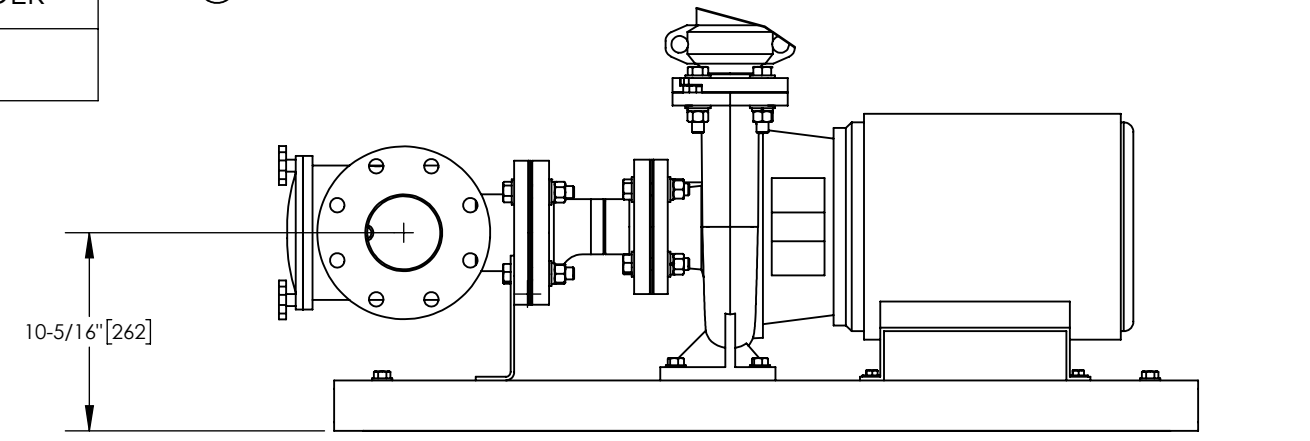


TOP VIEW

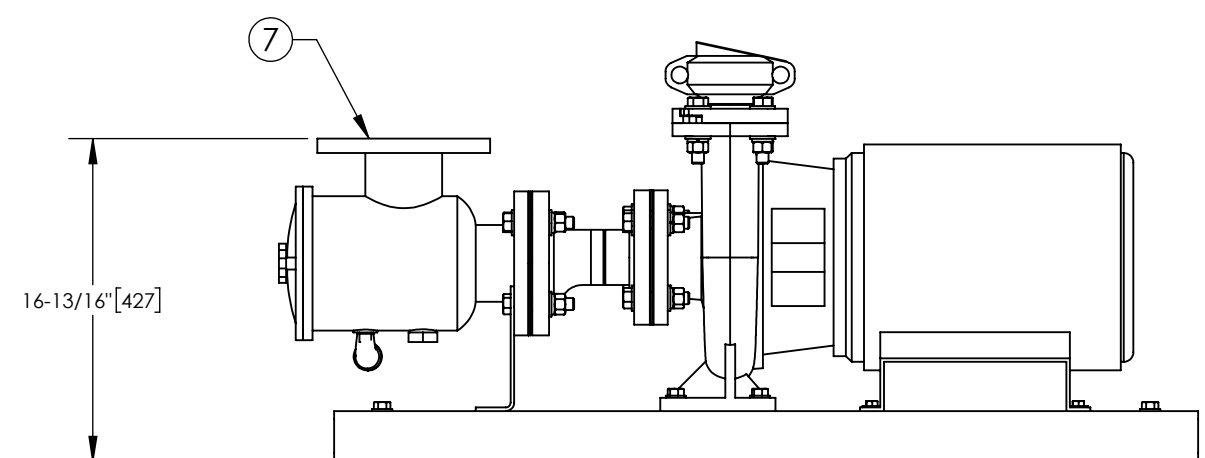
SUBMITTAL DRAWING

This drawing is submitted for spatial consideration only. Do not pre-plumb to these dimensions.

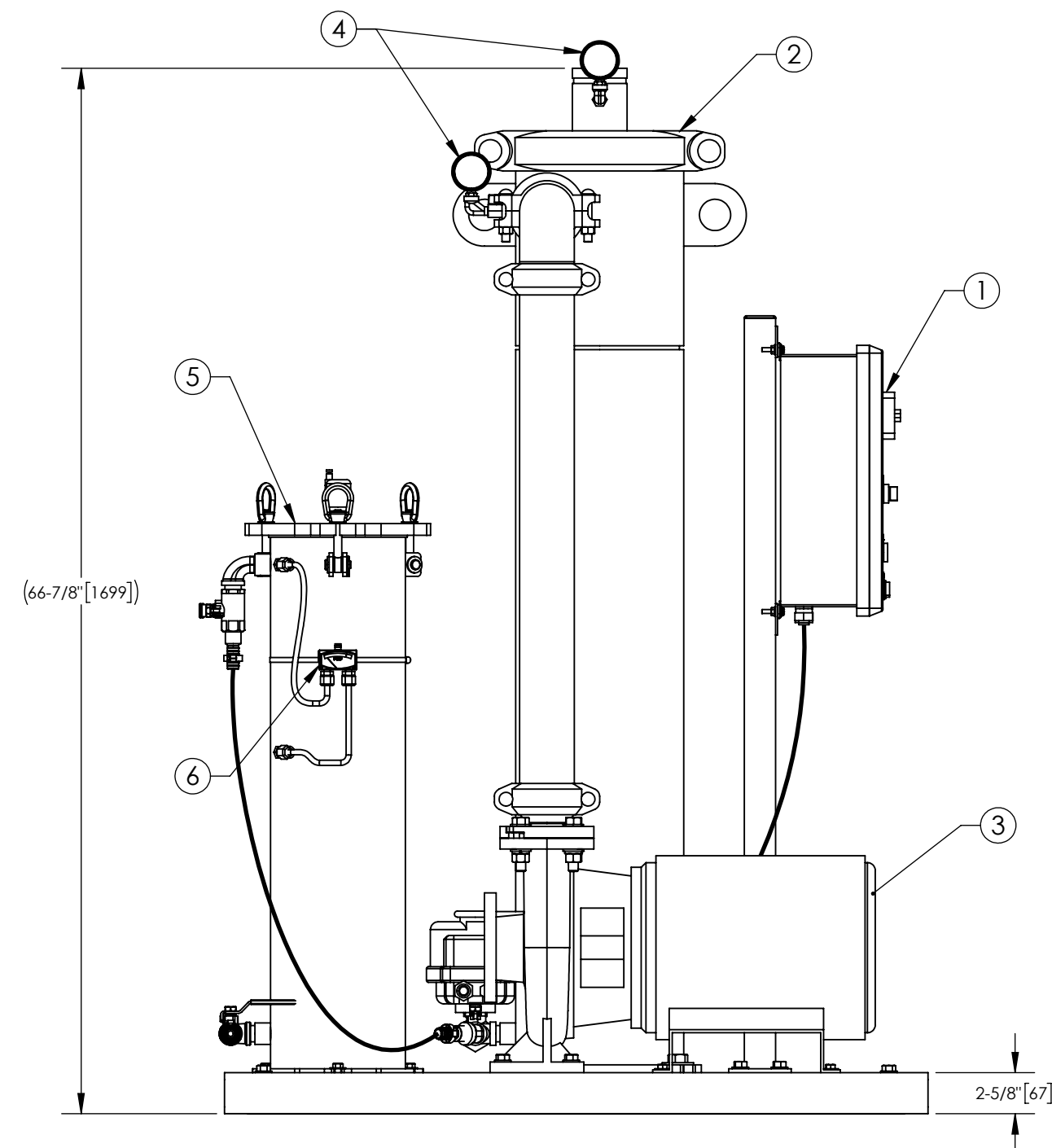
184846-208	FOR OTHER VOLTAGES ORDER
184846-230	FOR OTHER VOLTAGES ORDER
184846-460	SHOWN



FRONT VIEW W/ROTATED STRAINER



FRONT VIEW W/STRAINER



FRONT VIEW W/O STRAINER

UNLESS OTHERWISE SPECIFIED: DIMENSIONS ARE IN: INCHES [mm] TOLERANCES ARE: FRACTIONS DECIMALS ANGLES $\pm 1"$.XX $\pm .01$ $\pm 1/4"$.XXX $\pm .005$.XXXX $\pm .0005$		ENGINEERED FOR: STANDARD		FRESNO, CALIFORNIA WWW.LAKOS.COM	
DO NOT SCALE DRAWING	APPROVALS	DATE	TITLE		
MATERIAL	DRAWN	1/5/21	eTCX-0210-SRV/EFS/ACP1, TC SYSTEM, HI EFFICIENCY eHTX-0090, 3/60/208-230, 460V		
FINISH	ENGR	-	SIZE	MODEL NO.	DWG NO.
AS ASSEMBLED	REVIEW	-	C		184846
	WORK ORDER	-	SCALE	1:10	EST. WT. 1032 lb
					SHEET 1 OF 1

DWG NO. 184846
SHEET 1 OF 1
REV. 01