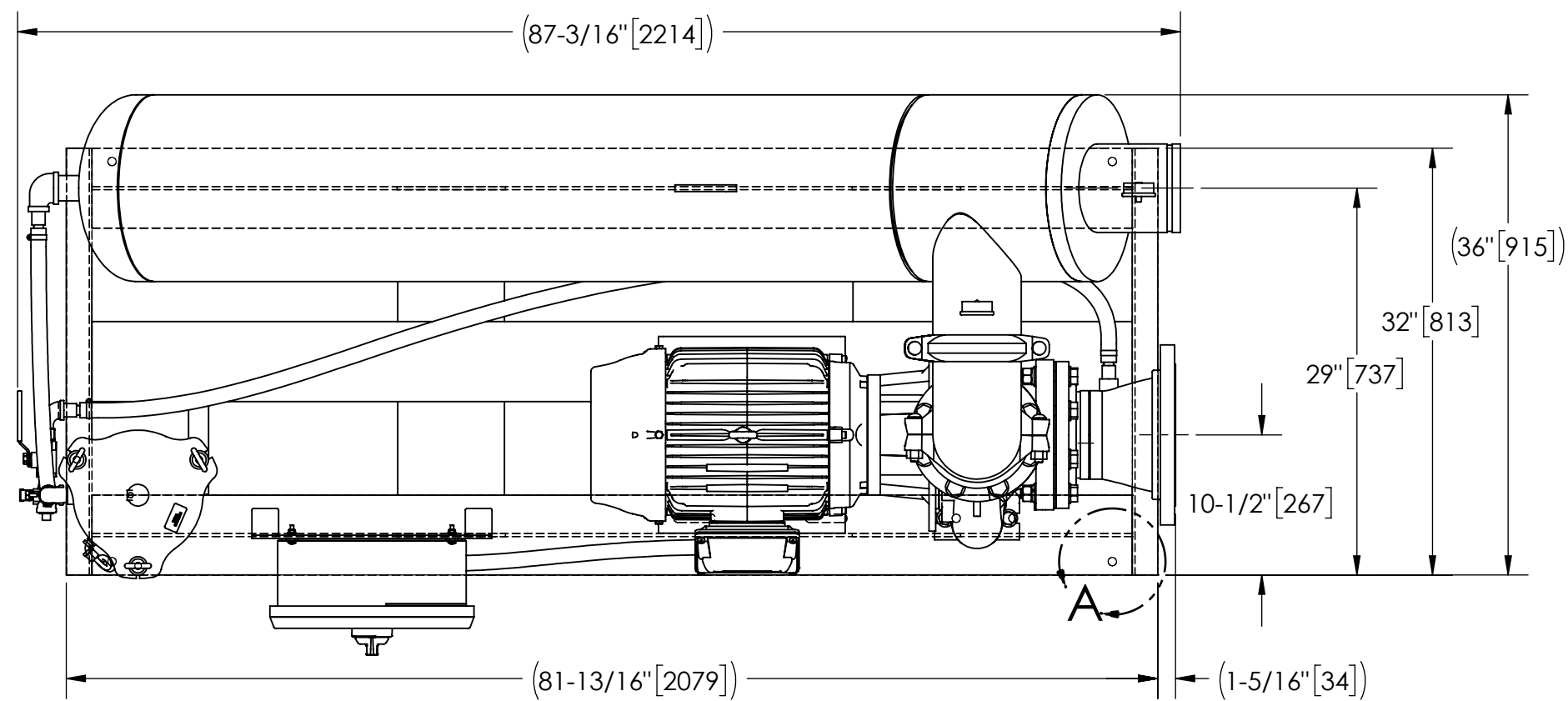


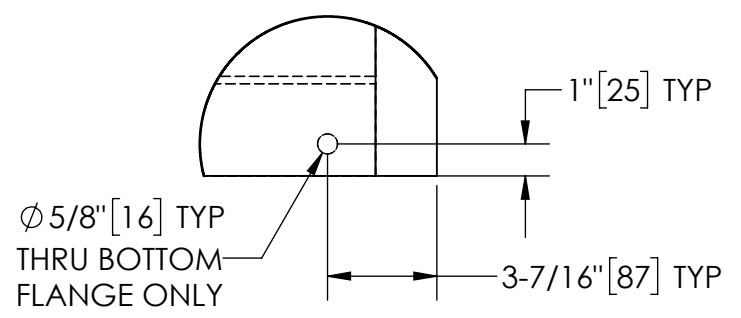
EXCEPT AS OTHERWISE PROVIDED BY CONTRACT, THIS DRAWING AND SPECIFICATIONS SHALL NOT BE REPRODUCED, COPIED OR USED AS THE BASIS FOR MANUFACTURE OR SALE OF MATTER DEPICTED HEREIN WITHOUT THE EXPRESSED WRITTEN PERMISSION OF THE LAKOS CORPORATION, OR ITS ASSIGNEES.

THIS DRAWING HAS BEEN GENERATED AND IS MAINTAINED BY A CAD SYSTEM. CHANGES SHALL ONLY BE INCORPORATED AS DIRECTED BY AN APPROVED ENGINEERING CHANGE ORDER (ECO). PAPER COPIES ARE UNCONTROLLED.

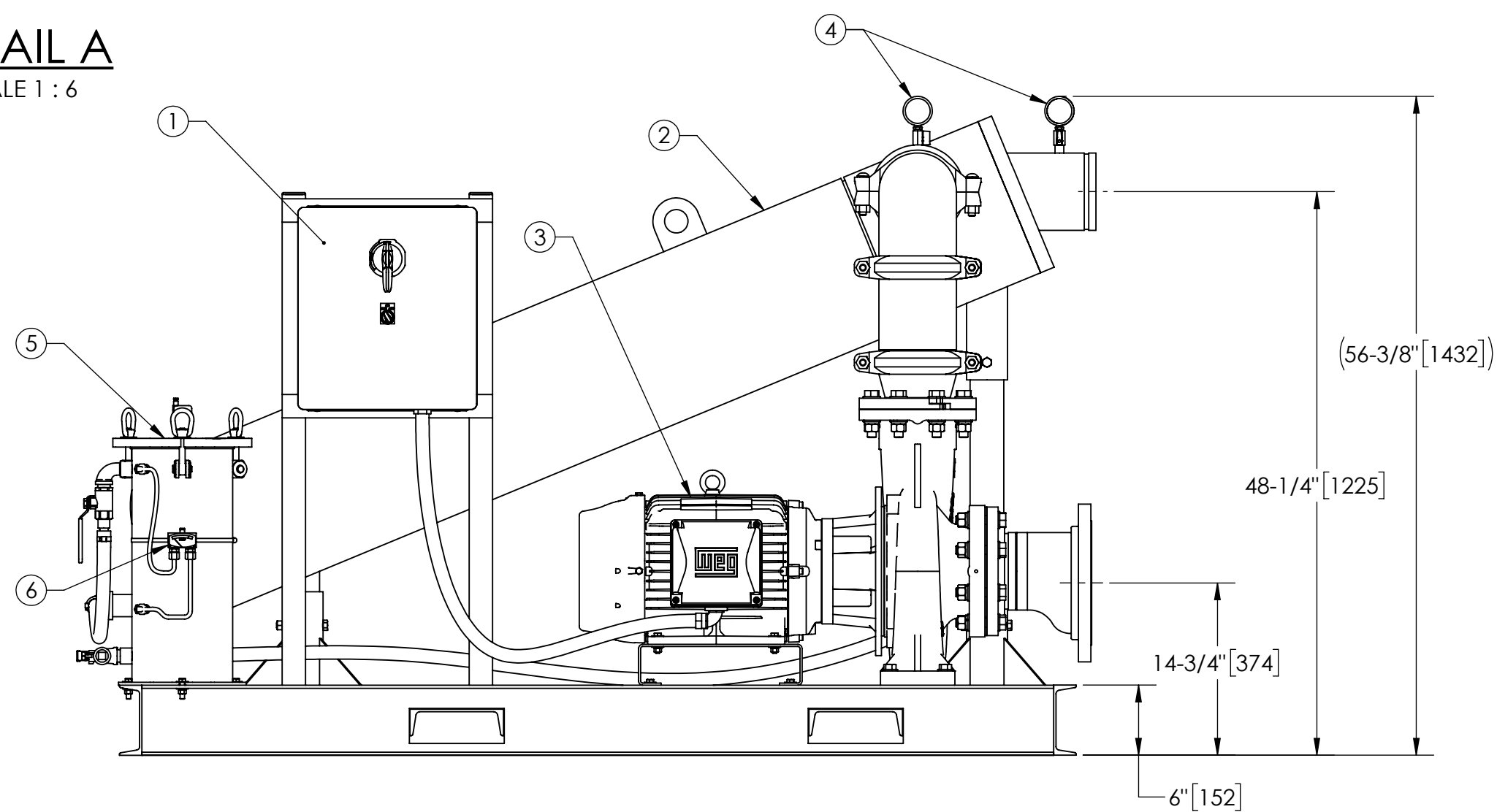
REVISIONS				
ZONE	REV.	DESCRIPTION	DATE	APPROVED
	02	UPDATE SKID, SEPARATOR, AND SALES NOTES	11/7/2023	AAM



TOP VIEW



DETAIL A
SCALE 1 : 6



FRONT VIEW

NOTES:

- INLET IS 8" PIPE (150# ANSI FLANGED).
- OUTLET IS 6" PIPE (GROOVED).
- PURGE OUTLET IS 1-1/2" PIPE.
- MAXIMUM PRESSURE: 150 psi (10.3 bar).
- MAXIMUM FLUID TEMPERATURE: 140°F (60°C).
- SPECIFIED FLOWRATE OF 825 gpm (187 m³/hr).
- FINISH: AS ASSEMBLED.
- POWER REQUIREMENT: 3/60/460V.
- NEMA 4X MOTOR STARTER ENCLOSURE WITH SAFETY DISCONNECT AND H.O.A. SWITCH.
- APPROXIMATE DRY WEIGHT: 1848 lbs (838 kg).
- INLET/OUTLET VALVE KIT, MODEL TCV-0825 RECOMMENDED.
- MINIMUM PIPE TO TB SYSTEM IS 8" PIPE.
- FLOODED SUCTION REQUIRED.

COMPONENT LIST:

- ELECTRICAL CONTROL BOX: 3/60/460V, W/120V TRANSFORMER.
- SEPARATOR: HTH-0450-L.
- PUMP: 20 HP, CENTRIFUGAL, TEFC, 1750 rpm, 3/60/460V.
- INLET/OUTLET PRESSURE GAUGES: 0-160 psi, GLYCERIN-FILLED.
- PURGE EQUIPMENT: SRV-816.
- DIFFERENTIAL PRESSURE INDICATOR: (AVAILABLE WITH DRY CONTACT-MODEL DEC-100. ORDER SEPARATELY).

SUBMITTAL DRAWING

This drawing is submitted for spatial consideration only. Do not pre-plumb to these dimensions.

UNLESS OTHERWISE SPECIFIED: DIMENSIONS ARE IN: INCHES (mm) TOLERANCES ARE: FRACTIONS .XX ± .01 ANGLES ± 1° DECIMALS .XXX ± .005 XXX ± .0005		ENGINEERED FOR: STANDARD			
DO NOT SCALE DRAWING		APPROVALS	DATE	TITLE	
MATERIAL PER LAKOS SPEC		DRAWN ADJ	7/25/06	TBI-0825-SRV/L, TC SYSTEM, SIDESTREAM HTH-0450-L, 3/60/460V	
FINISH AS ASSEMBLED		ENGR DLW	7/28/06	SIZE C	MODEL NO.
		REVIEW -	-	DWG NO. 124095	REV. 02
		WORK ORDER	QTY.	SCALE 1:12	EST. WT. 1848 lb SHEET 1 OF 1

DWG. NO. 124095 SH. 1 REV. 02