

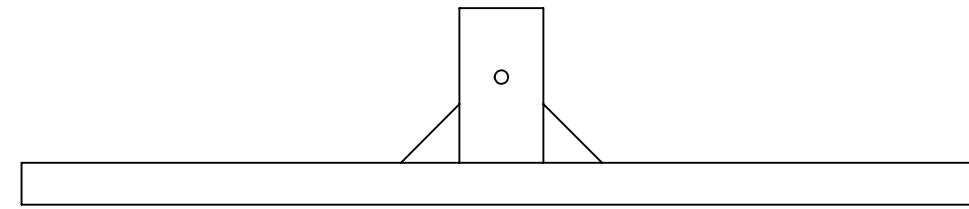
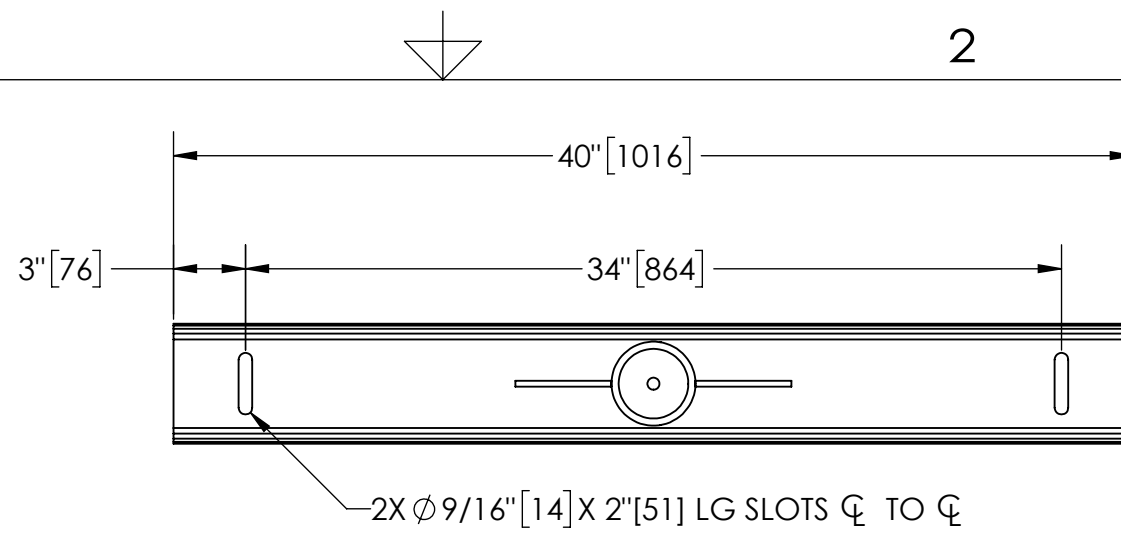
EXCEPT AS OTHERWISE PROVIDED BY CONTRACT, THIS DRAWING AND SPECIFICATIONS SHALL NOT BE REPRODUCED, COPIED OR USED AS THE BASIS FOR MANUFACTURE OR SALE OF MATTER DEPICTED HEREIN WITHOUT THE EXPRESSED WRITTEN PERMISSION OF THE LAKOS CORPORATION, OR ITS ASSIGNEES.

THIS DRAWING HAS BEEN GENERATED AND IS MAINTAINED BY A CAD SYSTEM. CHANGES SHALL ONLY BE INCORPORATED AS DIRECTED BY AN APPROVED ENGINEERING CHANGE ORDER (ECO). PAPER COPIES ARE UNCONTROLLED.

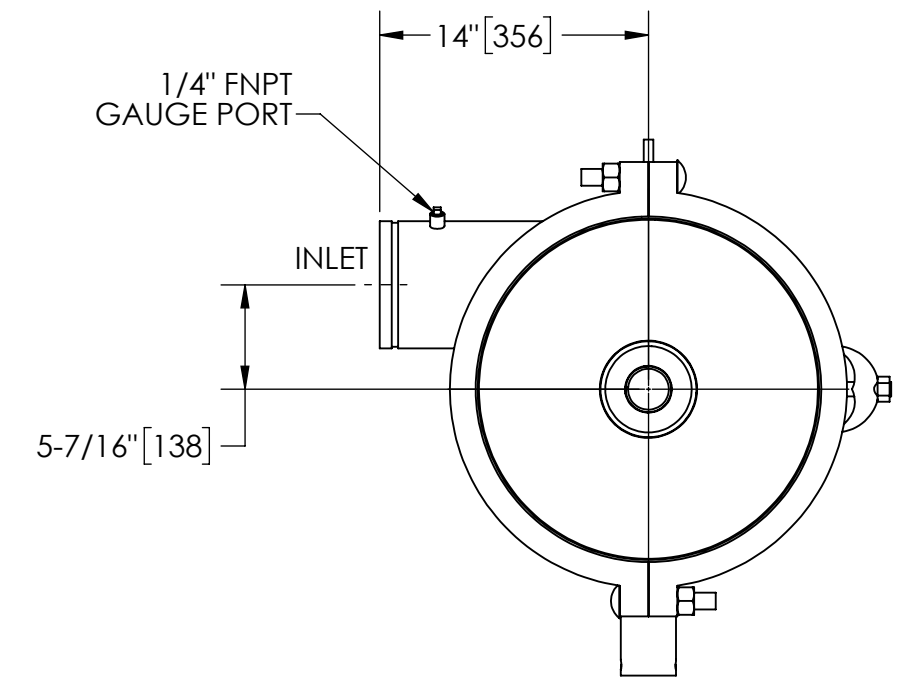
NOTES:

1. INLET & OUTLET ARE 6" GROOVED PIPE.
2. MAXIMUM PRESSURE: 150 psi (10.3 bar).
3. MAXIMUM TEMPERATURE: 180°F (82.2°C).
4. PRESSURE LOSS: 2-15 psid (.14-1.03 bar) AT RATED FLOW.
5. RATED FLOW: 320-770 gpm (73-175 m³/hr).
6. APPROXIMATE DRY WEIGHT: 978 lbs (444 kg).
7. FINISH: LAKOS BLACK (EXTERIOR ONLY).

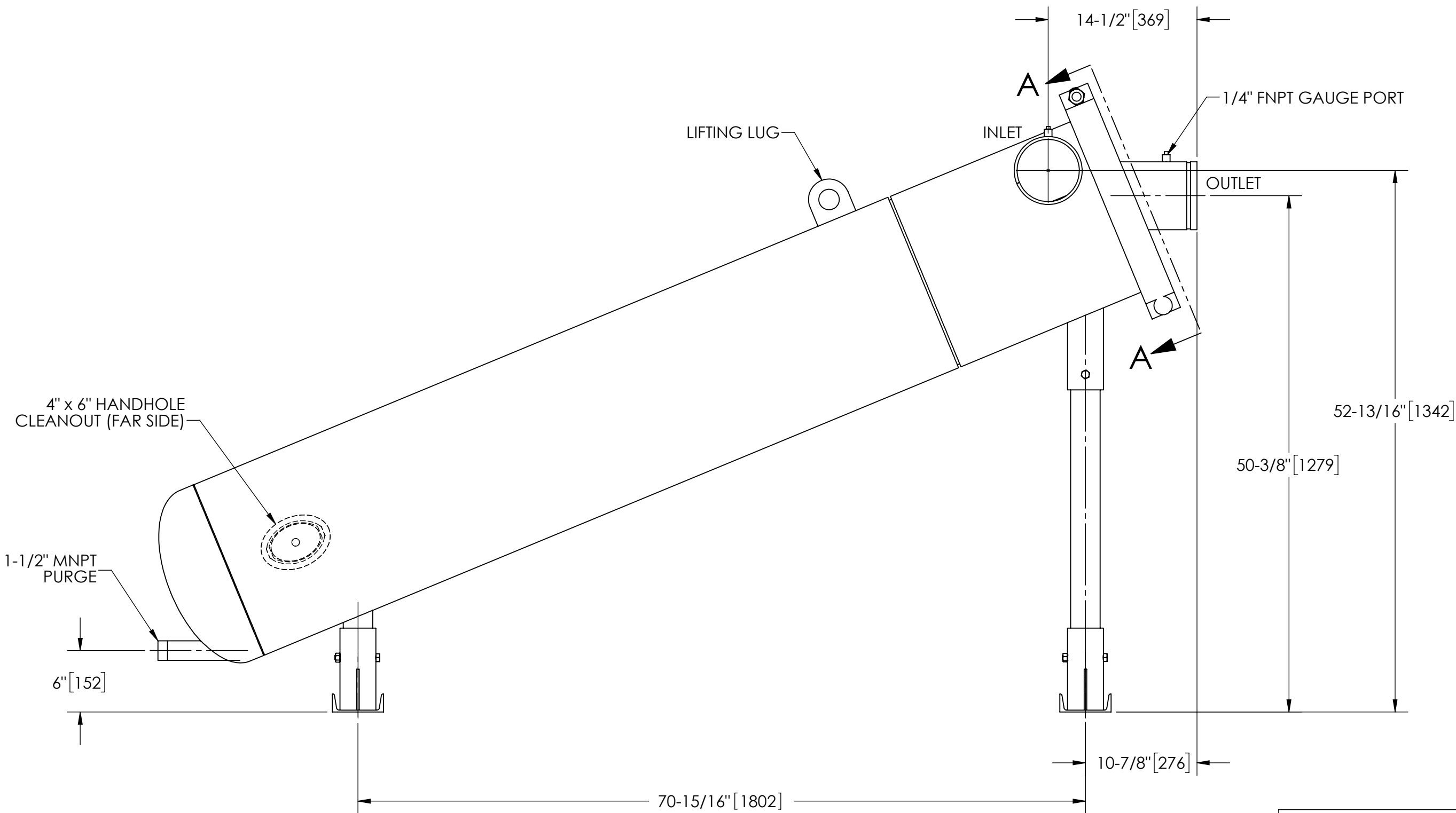
REVISIONS				
ECN	REV.	DESCRIPTION	DATE	APPROVED
	B	UPDATE TO CURRENT STANDARDS, UPDATE TITLE BLOCK	12/17/21	AMF



BASE DETAIL



SECTION A-A



SUBMITTAL DRAWING

This drawing is submitted for spatial consideration only. Do not pre-plumb to these dimensions.

UNLESS OTHERWISE SPECIFIED: DIMENSIONS ARE IN: INCHES (mm) TOLERANCES ARE: FRACTIONS DECIMALS ANGLES ± 1/2" .XX ± .01 ± 1/4" .XXX ± .005 .XXXX ± .0005		ENGINEERED FOR: STANDARD								
DO NOT SCALE DRAWING		APPROVALS	DATE							
MATERIAL	CLASS P-1 MILD CARBON STEEL	DRAWN	TAR	1/13/14	TITLE eHTX-0320-L, SEPARATOR 320-770 GPM, CARBON STEEL					
FINISH	LAKOS BLACK	ENGR	-	-						
		MFG	-	-	SIZE	MODEL NO.	DWG NO.	REV.		
		WORK ORDER			C		136849	B		
					SCALE	1:10	EST. WT.	978 lb	SHEET	1 OF 1

DWG. NO. 136849 SH 1 REV. B