

EXCEPT AS OTHERWISE PROVIDED BY CONTRACT, THIS DRAWING AND SPECIFICATIONS SHALL NOT BE REPRODUCED, COPIED OR USED AS THE BASIS FOR MANUFACTURE OR SALE OF MATTER DEPICTED HEREIN WITHOUT THE EXPRESSED WRITTEN PERMISSION OF THE LAKOS CORPORATION, OR ITS ASSIGNEES.

THIS DRAWING HAS BEEN GENERATED AND IS MAINTAINED BY A CAD SYSTEM. CHANGES SHALL ONLY BE INCORPORATED AS DIRECTED BY AN APPROVED ENGINEERING CHANGE ORDER (ECO). PAPER COPIES ARE UNCONTROLLED.

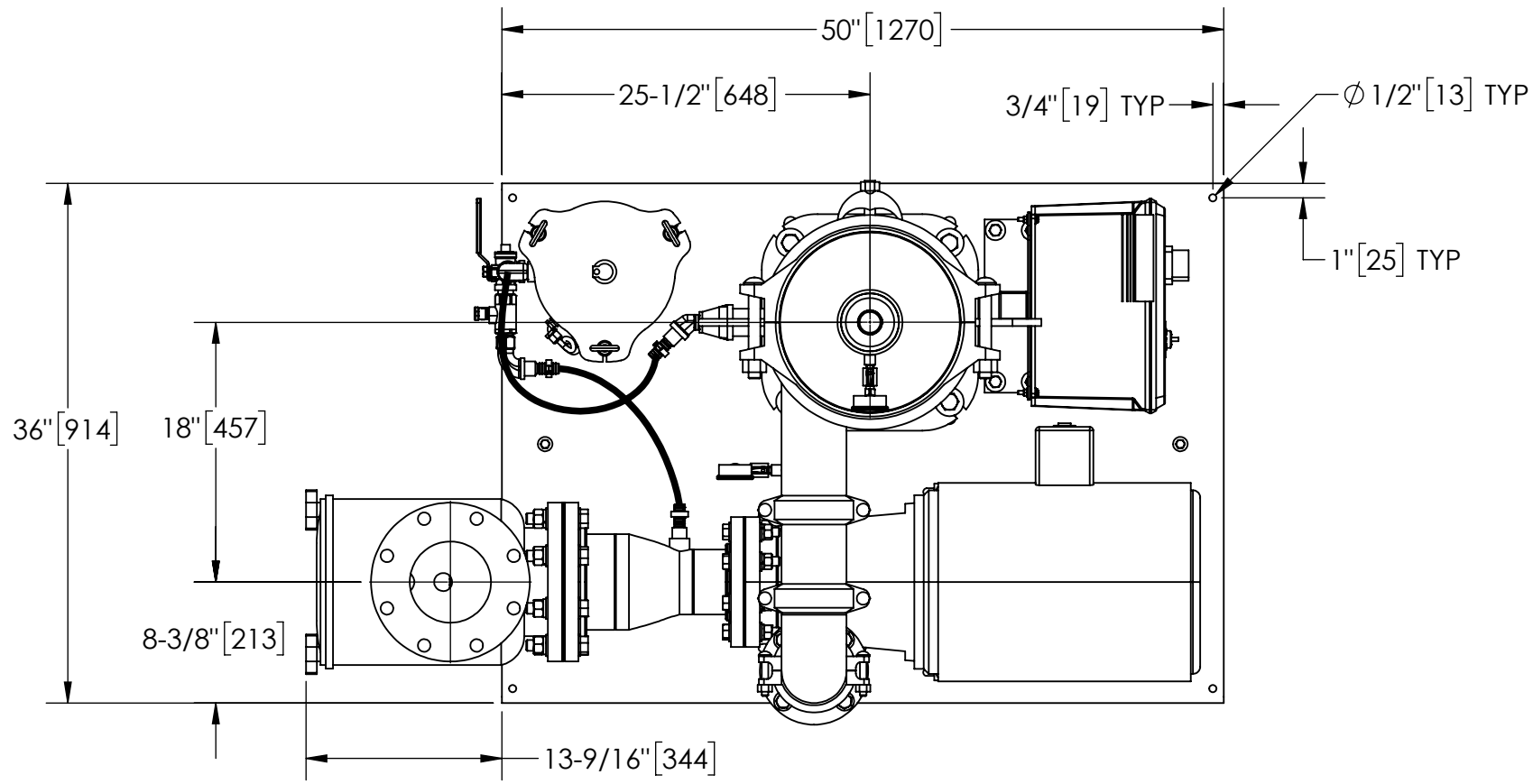
REVISIONS				
ECN	REV.	DESCRIPTION	DATE	APPROVED
	A	RELEASED FOR PRODUCTION	12/10/12	TRR
	B	UPDATED ELECTRICAL BOX	4/9/14	TRR
	C	UPDATED FOR MANUFACTURABILITY	4/14/15	CAG
	D	UPDATED FOR MANUFACTURABILITY	4/15/15	AMR
	E	REPLACED PACO PUMP WITH AMERICAN MARSH	8/26/16	TRR
	F	REPLACED AMERICAN MARCH WITH B&G ZYLEM, REMOVED 208V & 320V RATINGS	6/26/2019	DGB

NOTES:

- INLET IS 6" PIPE (125# ANSI FLANGED).
- OUTLET IS 4" PIPE (GROOVED).
- PURGE OUTLET IS 1-1/2" PIPE.
- MAXIMUM PRESSURE: 150 psi (10.3 bar).
- MAX FLUID OPERATING TEMPERATURE: 100°F (37.8°C).
- SPECIFIED FLOW RATES:
BASIN SWEEPING- 410 gpm (93 m³/hr).
SIDE STREAM & CLOSED LOOP- 500 gpm (114 m³/hr).
- FINISH: AS ASSEMBLED.
- POWER REQUIREMENT: 460V, 3PH, 60Hz. (CUSTOMER SPECIFIED)
- NEMA 4X MOTOR STARTER ENCLOSURE WITH SAFETY DISCONNECT AND H.O.A. SWITCH.
- APPROXIMATE DRY WEIGHT: 1258 lbs (758 kg).
- INLET/OUTLET VALVE KIT RECOMMENDED: SEE FACTORY.
- MINIMUM PIPE FROM TOWER BASIN TO TC SYSTEM IS 6" PIPE.
- FLOODED SUCTION REQUIRED.

COMPONENT LIST:

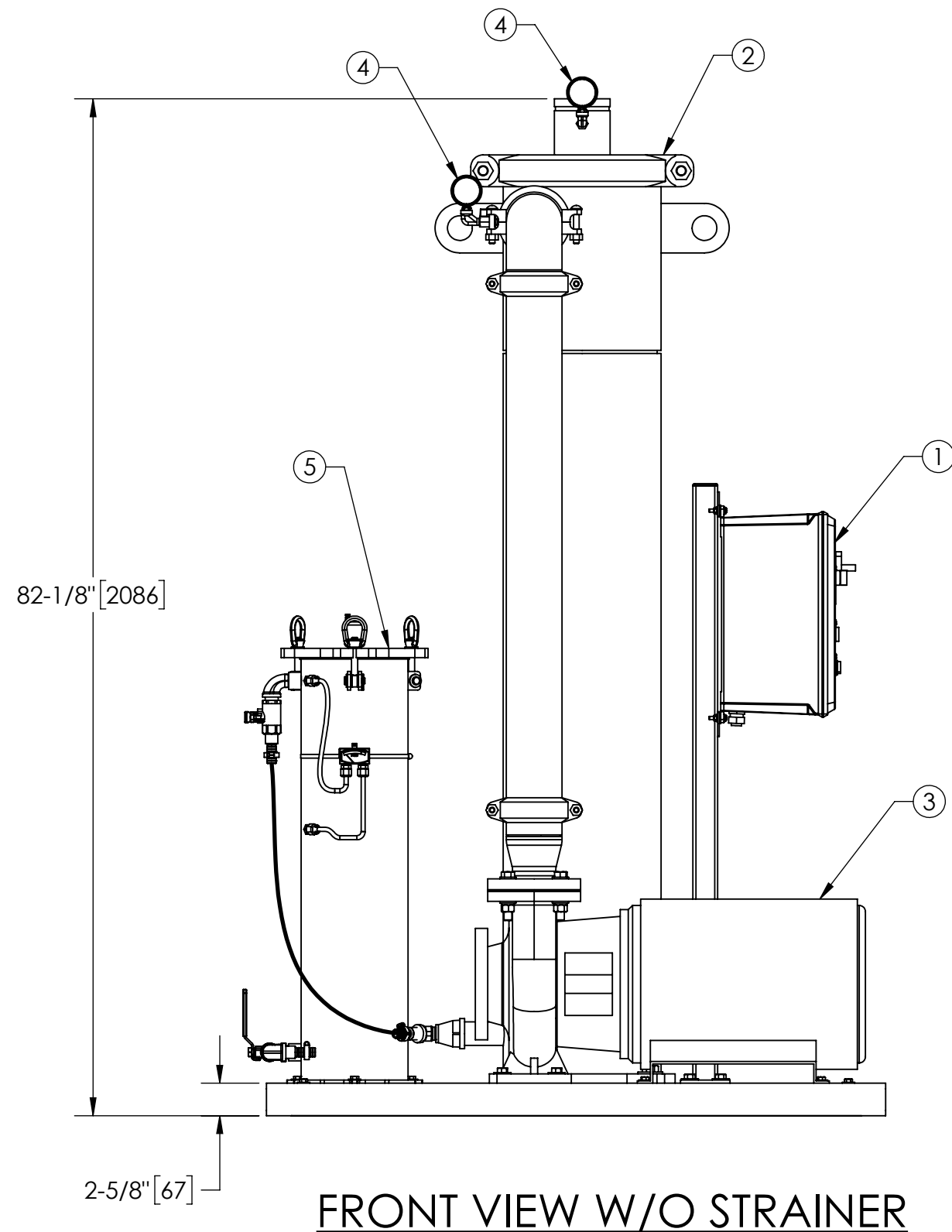
- ELECTRICAL CONTROL BOX 460V, 60Hz W/120V TRANSFORMER.
- SEPARATOR: eHTX-0185-V.
- PUMP: 10 HP CENTRIFUGAL, 1800 rpm, 208V/230V/460V, 60Hz.
- INLET/OUTLET PRESSURE GAUGES: 0-160 psi, GLYCERIN-FILLED.
- PURGE EQUIPMENT: SRV-833.
- STRAINER, SUCTION DIFFUSER.



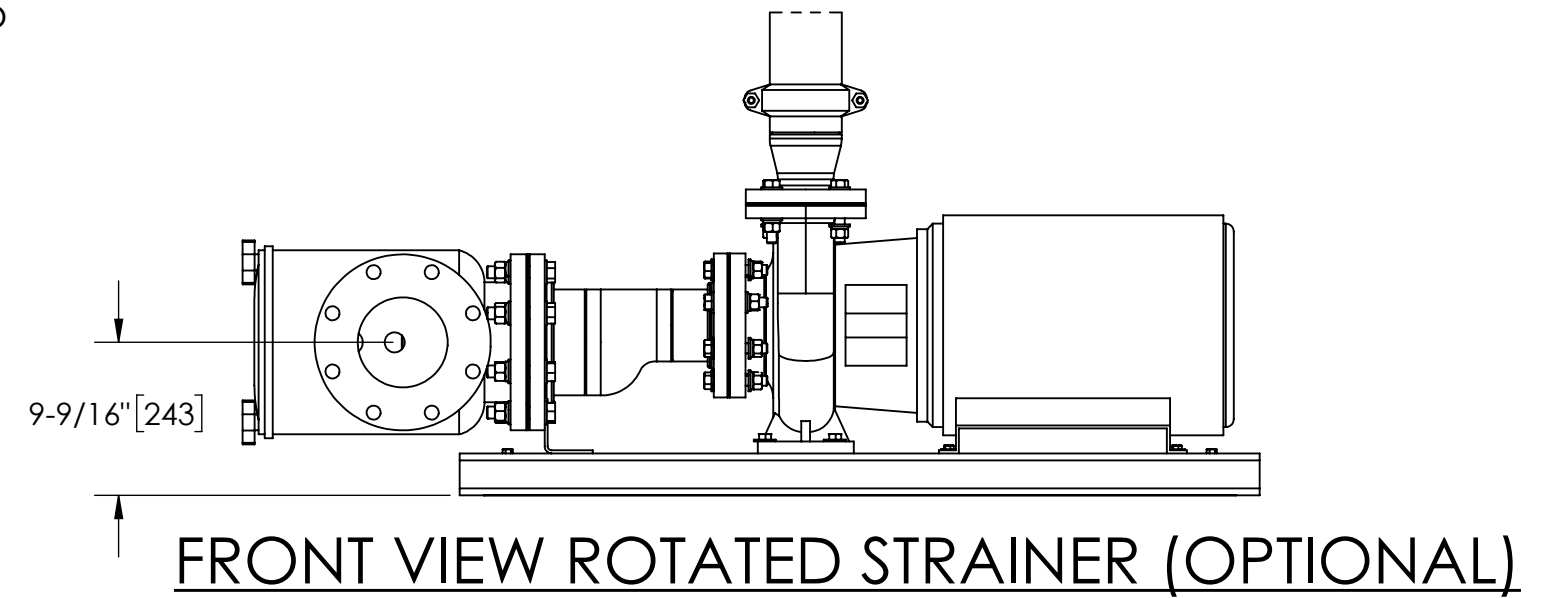
TOP VIEW

SUBMITTAL DRAWING

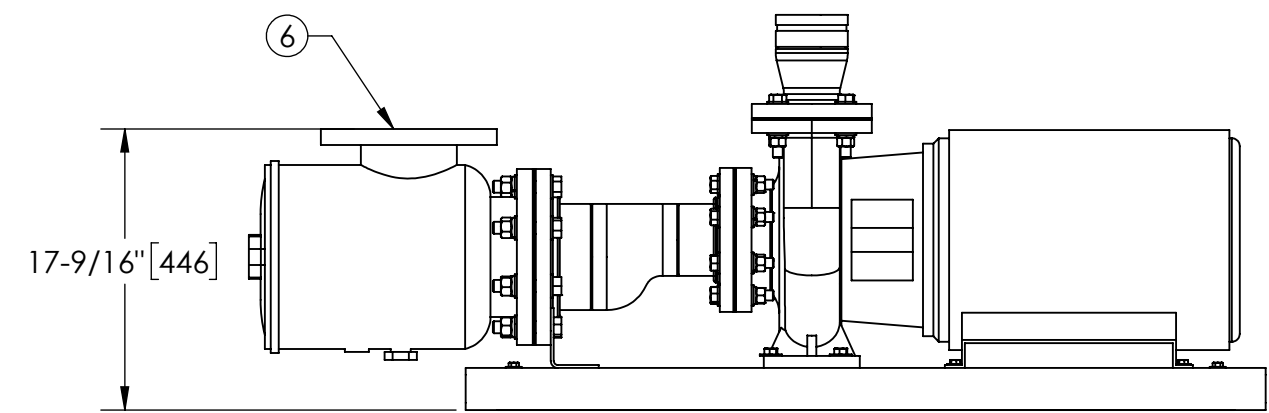
This drawing is submitted for spatial consideration only. Do not pre-plumb to these dimensions.



FRONT VIEW W/O STRAINER



FRONT VIEW ROTATED STRAINER (OPTIONAL)



FRONT VIEW PUMP & STRAINER

UNLESS OTHERWISE SPECIFIED: DIMENSIONS ARE IN: INCHES (mm) TOLERANCES ARE: FRACTIONS DECIMALS ANGLES ± 1/2" .XX ± .01 ± 1/4" .XXX ± .005 .XXXX ± .0005	ENGINEERED FOR: STANDARD			
	APPROVALS	DATE		
DO NOT SCALE DRAWING	DRAWN TRR	12/10/12	TITLE eTCX-0410-SRV, TC SYSTEM HI EFFICIENCY eHTX-0185, 3/60/460V	
MATERIAL PER LAKOS SPEC	ENGR -	-	SIZE C	MODEL NO.
FINISH AS ASSEMBLED	MFG ADJ	6/27/19	DWG NO. 135304	REV. F
	WORK ORDER	QTY.	SCALE 1:12	EST. WT. 1258 lb SHEET 1 OF 1

DWG. NO. 13530 SHEET 1 REV. F