

4

3

2

1

EXCEPT AS OTHERWISE PROVIDED BY CONTRACT, THIS DRAWING AND SPECIFICATIONS SHALL NOT BE REPRODUCED, COPIED OR USED AS THE BASIS FOR MANUFACTURE OR SALE OF MATTER DEPICTED HEREIN WITHOUT THE EXPRESSED WRITTEN PERMISSION OF THE LAKOS CORPORATION, OR ITS ASSIGNEES.

# SUBMITTAL DRAWING

This drawing is submitted for spatial consideration only. Do not pre-plumb to these dimensions.

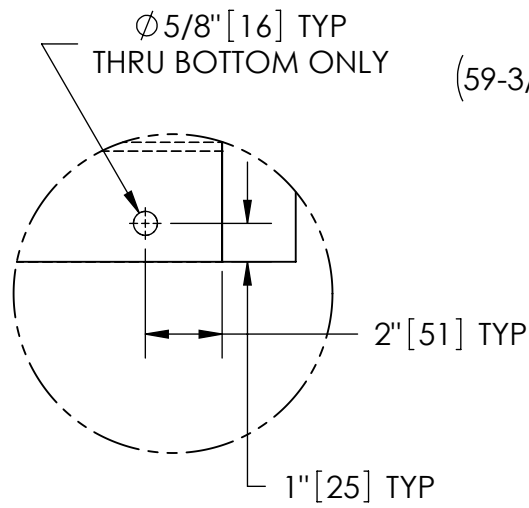
REVISION HISTORY				
ZONE	REV	DESCRIPTION	DATE	APPROVED
A-4	02	CHANGED LOCATION OF ELECTRICAL BOX	7/26/2006	ADJ
-	A	REAR SEPARATOR LEG WAS 8" LG	8/28/2006	K.F. BITTER
-	B	REAR SEP LEG NOW INTEGRAL; ADDED SEP INLET WASHERS PN 130603; CHANGED PUMP AND SKID	1/9/19	TPF
-	C	CHANGED TO XYLEM PUMP	7/20/20	TPF
-	D	UPDATED STRAINER MODEL & MIN PIPE SIZE NOTE	1/20/22	TPF

**NOTES:**

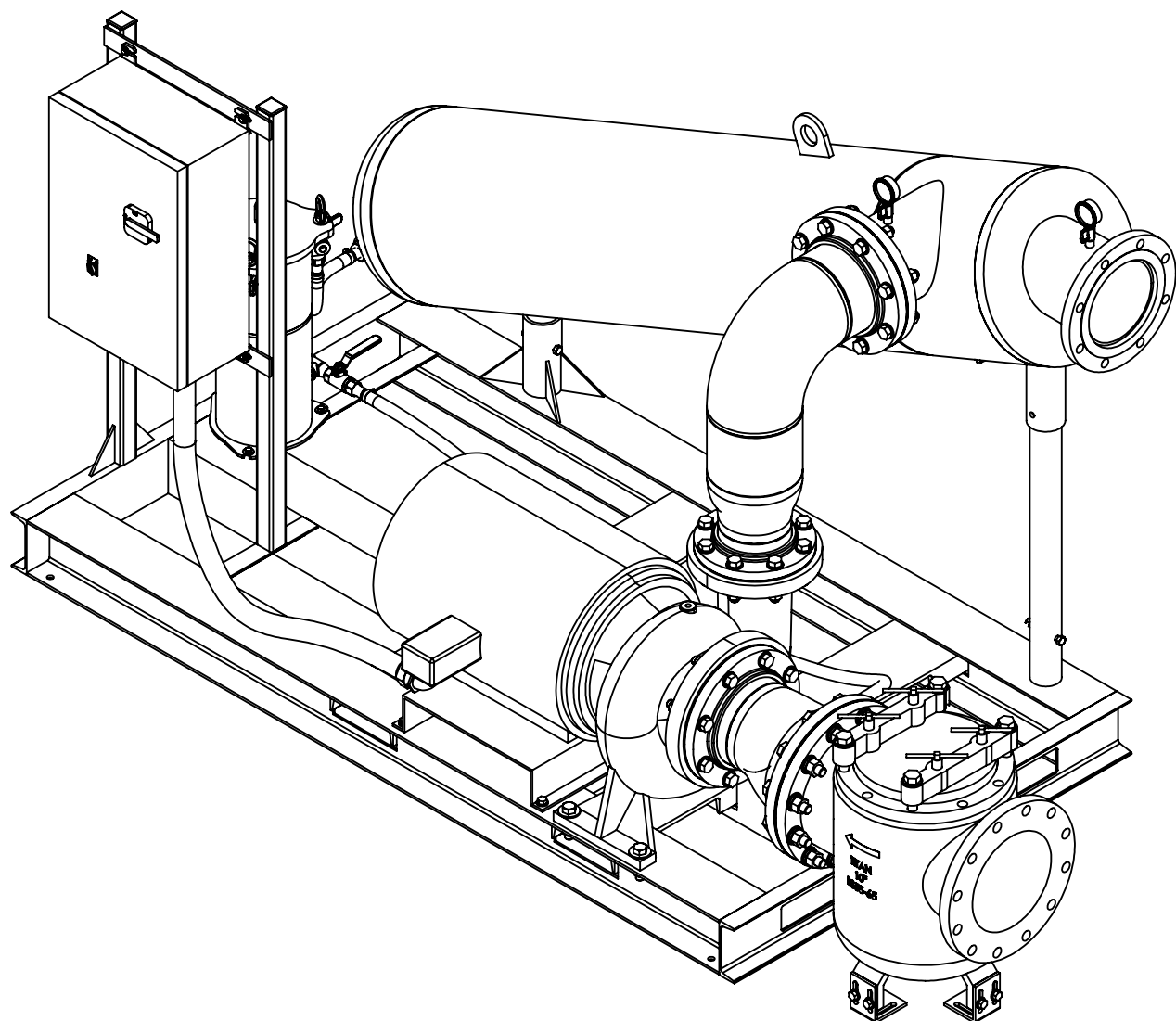
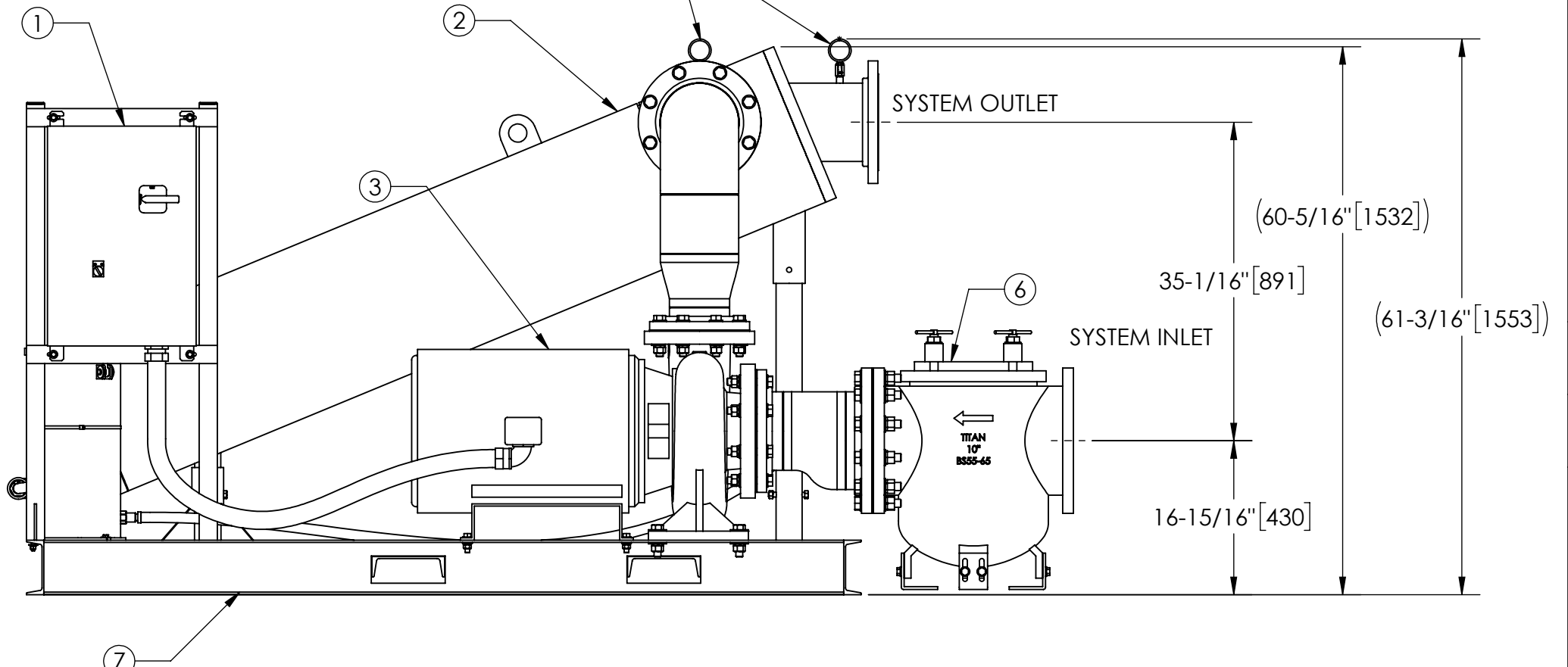
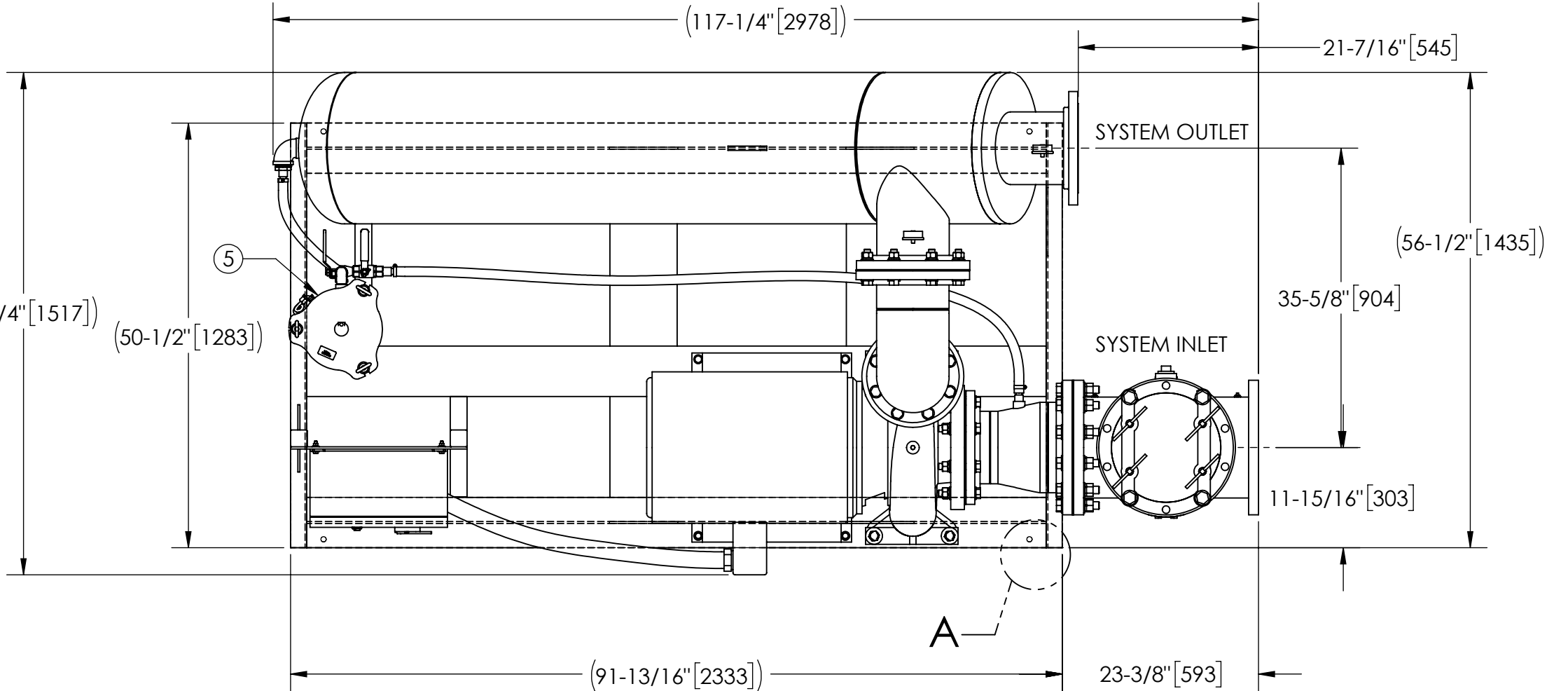
1. INLET IS 10" PIPE (125# ANSI FLANGED).
2. OUTLET IS 8" PIPE (150# ANSI FLANGED).
3. PURGE OUTLET IS 1-1/2" PIPE.
4. MAXIMUM PRESSURE: 150 psi (10.3 bar).
5. MAXIMUM FLUID TEMPERATURE: 100°F (37.8°C).
6. SPECIFIED FLOWRATE OF 1670 gpm (380 m³/hr).
7. FINISH: AS ASSEMBLED.
8. POWER REQUIREMENT: 3/60/460V.
9. APPROXIMATE DRY WEIGHT: 3050 lbs (1383 kg).
10. MINIMUM PIPE FROM TOWER BASIN TO TC SYSTEM IS 12" PIPE.
11. FLOODED SUCTION REQUIRED.

**COMPONENT LIST:**

- 1 ELECTRICAL CONTROL BOX 3/60/460V W/115V TRANSFORMER.
- 2 SEPARATOR: HTH-0810-L/TC/FLG (NON ACCESSIBLE).
- 3 PUMP: 50 HP, 1800 RPM, END SUCTION CENTRIFUGAL, 3/60/460V.
- 4 INLET/OUTLET PRESSURE GAUGES: 0-160 psi, GLYCERIN-FILLED.
- 5 PURGE EQUIPMENT: SRV-816
- 6 BASKET STRAINER: 10"
- 7 SKID: CARBON STEEL, LAKOS BLACK.



**DETAIL A**  
SCALE 1:5  
TYP 4 PLCS



THIS DRAWING HAS BEEN GENERATED AND IS MAINTAINED BY A CAD SYSTEM. CHANGES SHALL ONLY BE INCORPORATED AS DIRECTED BY AN APPROVED ENGINEERING CHANGE ORDER (ECO). PAPER COPIES ARE UNCONTROLLED.

UNLESS OTHERWISE SPECIFIED: DIMENSIONS ARE IN: INCHES [mm] TOLERANCES ARE: FRACTIONS    DECIMALS    ANGLES ± 1"            .XX ± .01            ± 1/4° .XXX ± .005 .XXXX ± .0005		ENGINEERED FOR: <b>STANDARD</b>			
DO NOT SCALE DRAWING	APPROVALS	DATE	TITLE		
MATERIAL: PER LAKOS SPEC	ADJ	11/10/05	TCI-1670-SRV/L, TC SYSTEM, SWEEPER HTH-0810-L, 460V 60HZ STD		
FINISH: AS ASSEMBLED	ENGR	-	SIZE	MODEL NO.	DWG NO.
	REVIEW	ADJ	C		124094
	WORK ORDER	QTY.	SCALE	EST. WT.	SHEET
			1:16	3050 lb	1 OF 1

4

3

2

1

DWG NO. 124094  
SHEET 1  
REV. D