

EXCEPT AS OTHERWISE PROVIDED BY CONTRACT, THIS DRAWING AND SPECIFICATIONS SHALL NOT BE REPRODUCED, COPIED OR USED AS THE BASIS FOR MANUFACTURE OR SALE OF MATTER DEPICTED HEREIN WITHOUT THE EXPRESSED WRITTEN PERMISSION OF THE LAKOS CORPORATION, OR ITS ASSIGNEES.

THIS DRAWING HAS BEEN GENERATED AND IS MAINTAINED BY A CAD SYSTEM. CHANGES SHALL ONLY BE INCORPORATED AS DIRECTED BY AN APPROVED ENGINEERING CHANGE ORDER (ECO). PAPER COPIES ARE UNCONTROLLED.

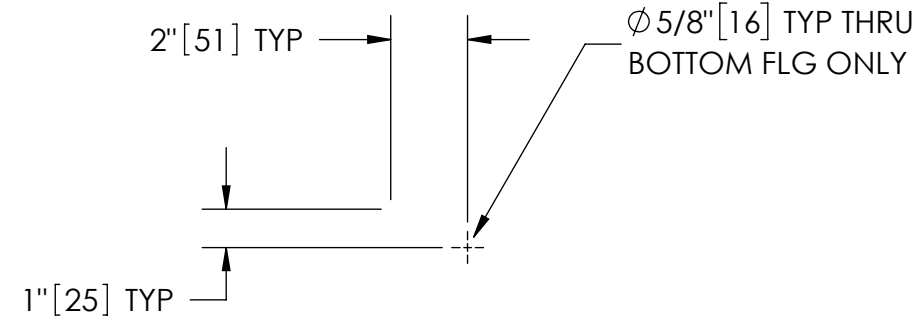
REVISION HISTORY				
ZONE	REV	DESCRIPTION	DATE	APPROVED
	A	RELEASED FOR PRODUCTION	5/10/22	AAM
	B	MFG AND PUMP UPDATE	9/19/22	AAM

**NOTES:**

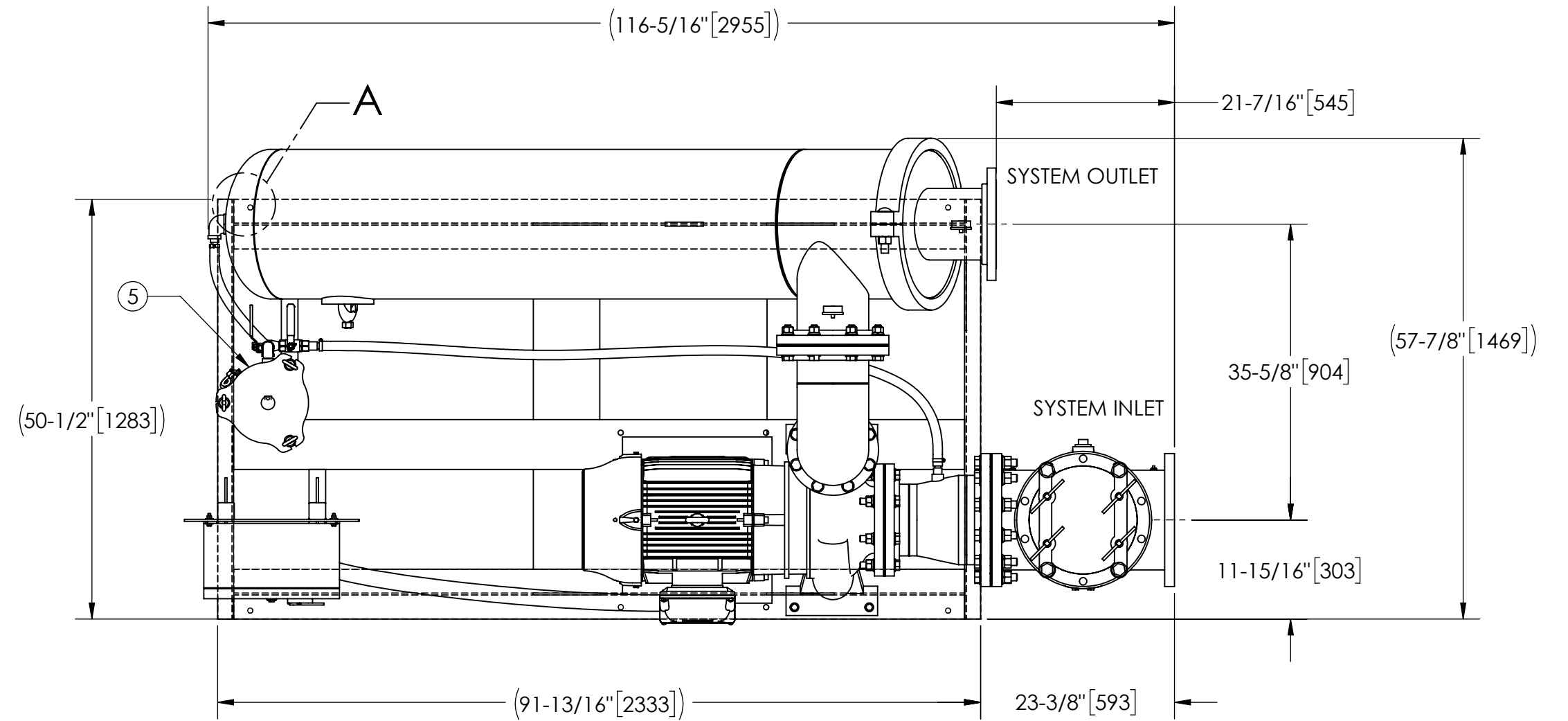
1. INLET IS 10" PIPE (125# ANSI FLANGED).
2. OUTLET IS 8" PIPE (150# ANSI FLANGED).
3. PURGE OUTLET IS 1-1/2" PIPE.
4. MAXIMUM PRESSURE: 150 psi (10.3 bar).
5. MAXIMUM FLUID TEMPERATURE: 100°F (37.8°C).
6. SPECIFIED FLOWRATE OF 1670 gpm (380 m³/hr).
7. FINISH: AS ASSEMBLED.
8. POWER REQUIREMENT: 3/60/460V.
9. APPROXIMATE DRY WEIGHT: 3274 lbs (1485 kg).
10. MINIMUM PIPE FROM TOWER BASIN TO TC SYSTEM IS 12" PIPE.
11. FLOODED SUCTION REQUIRED.

**COMPONENT LIST:**

- ① ELECTRICAL CONTROL BOX 3/60/460V W/120V TRANSFORMER.
- ② SEPARATOR: HTX-0810-L/TC/FLG.
- ③ PUMP: 50 HP, AURORA, CENTRIFUGAL, 1800 RPM, TEFC, 3/60/460V.
- ④ INLET/OUTLET PRESSURE GAUGES: 0-160 psi, GLYCERIN-FILLED.
- ⑤ PURGE EQUIPMENT: SRV-816.
- ⑥ BASKET STRAINER: 10".
- ⑦ SKID: CARBON STEEL, LAKOS BLACK.

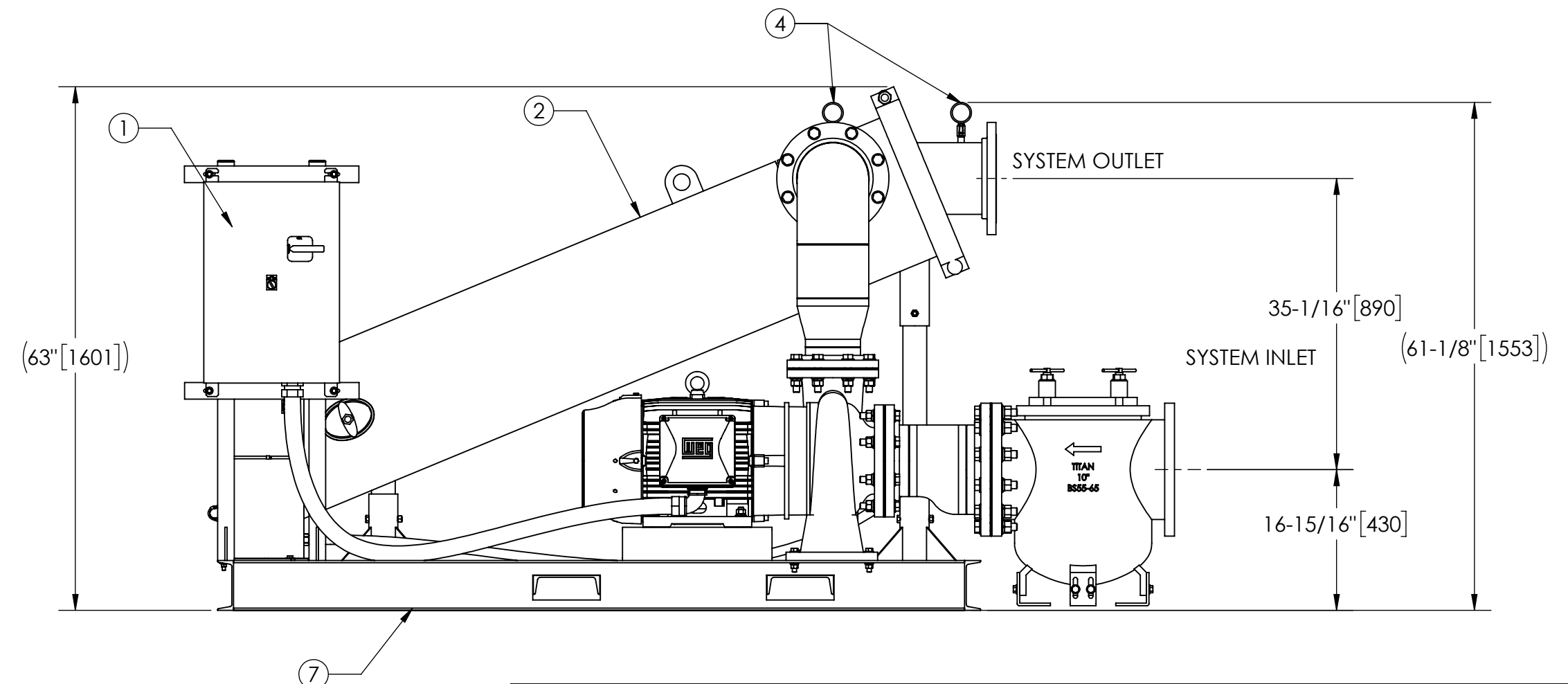
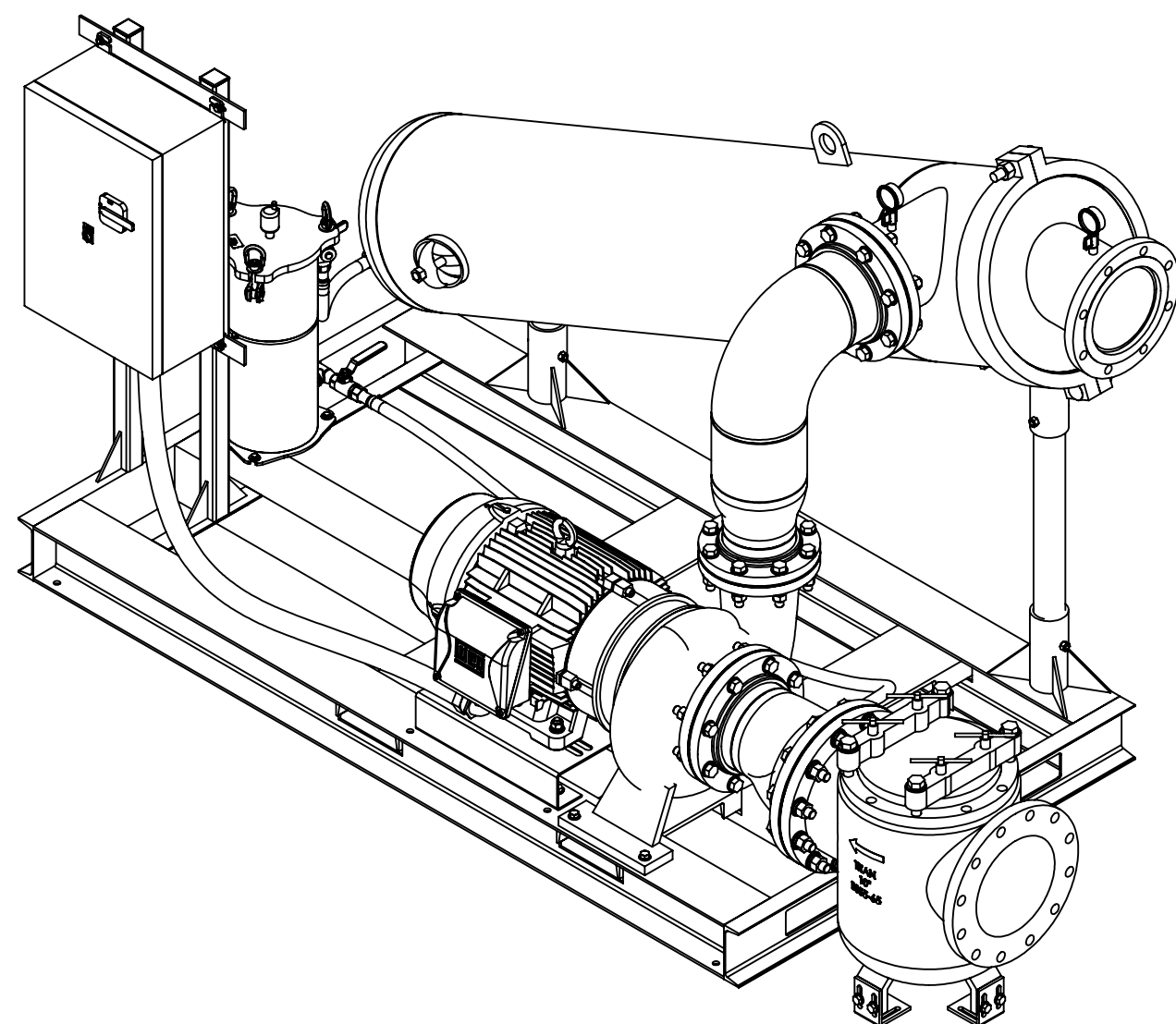


**DETAIL A**  
SCALE 1:5  
TYP 4 PLCS



**SUBMITTAL DRAWING**

This drawing is submitted for spatial consideration only. Do not pre-plumb to these dimensions.



UNLESS OTHERWISE SPECIFIED:  
DIMENSIONS ARE IN: INCHES (mm)  
TOLERANCES ARE:

FRACTIONS	DECIMALS	ANGLES
± 1"	.XX ± .01	± 1/4°
	.XXX ± .005	
	.XXXX ± .0005	

DO NOT SCALE DRAWING

MATERIAL: PER LAKOS SPEC

FINISH: AS ASSEMBLED

ENGINEERED FOR: <b>STANDARD</b>	
APPROVALS	DATE
DRAWN: AAM	5/4/22
ENGR: -	-
REVIEW: ADJ	5/6/21
WORK ORDER	QTY.

		FRESNO, CALIFORNIA WWW.LAKOS.COM	
<b>TITLE</b> TCX-1670-SRV/L/AUR, TC SYSTEM, SWEEPER HTX-0810-L 3/60/460V			
SIZE: C	MODEL NO.	DWG NO. 124098-AUR	REV. B
SCALE: 1:16	EST. WT. 3274 lb	SHEET 1 OF 1	

DWG. NO. 124098-AUR SH 1 REV. B