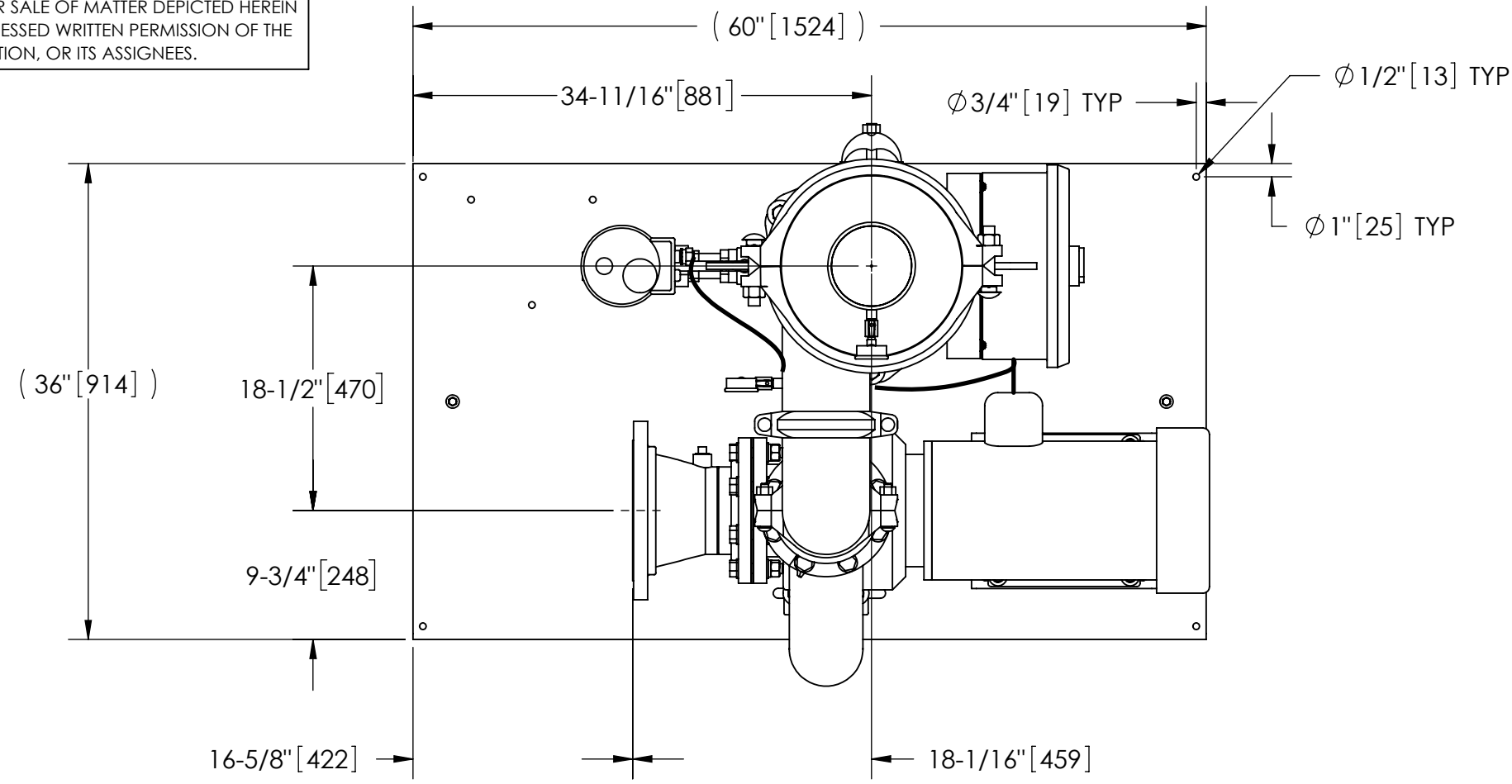


EXCEPT AS OTHERWISE PROVIDED BY CONTRACT, THIS DRAWING AND SPECIFICATIONS SHALL NOT BE REPRODUCED, COPIED OR USED AS THE BASIS FOR MANUFACTURE OR SALE OF MATTER DEPICTED HEREIN WITHOUT THE EXPRESSED WRITTEN PERMISSION OF THE LAKOS CORPORATION, OR ITS ASSIGNEES.

THIS DRAWING HAS BEEN GENERATED AND IS MAINTAINED BY A CAD SYSTEM. CHANGES SHALL ONLY BE INCORPORATED AS DIRECTED BY AN APPROVED ENGINEERING CHANGE ORDER (ECO). PAPER COPIES ARE UNCONTROLLED.

REVISIONS				
ZONE	REV.	DESCRIPTION	DATE	APPROVED
	C	UPDATED TO CURRENT STANDARDS	1/20/22	TPF



**TOP VIEW**

**SUBMITTAL DRAWING**

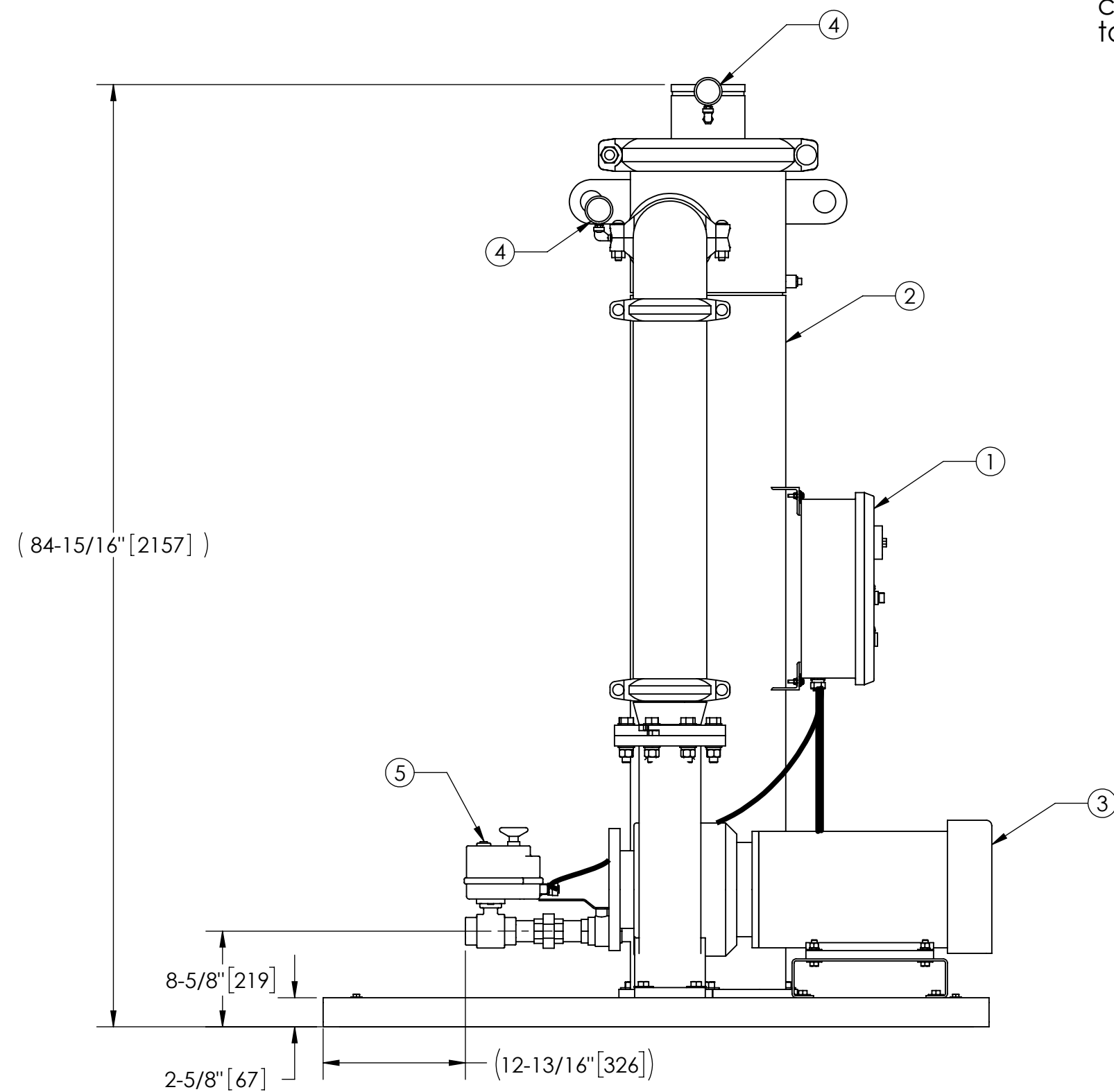
This drawing is submitted for spatial consideration only. Do not pre-plumb to these dimensions.

**NOTES:**

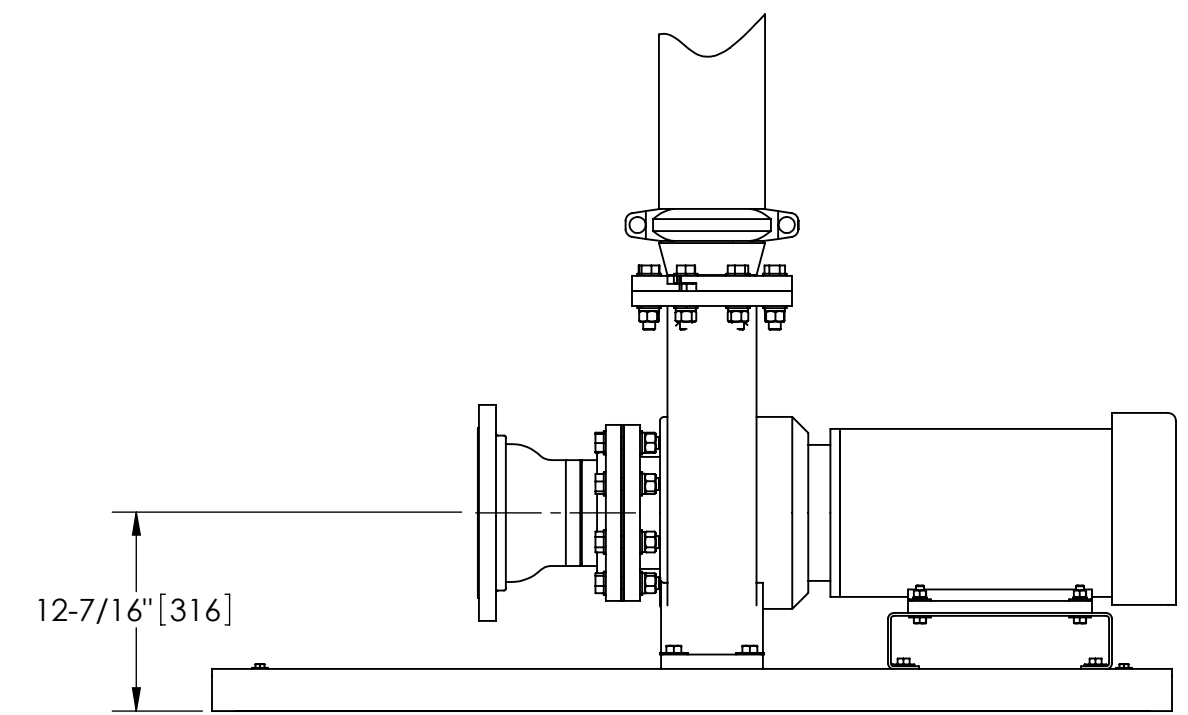
- INLET IS 8" PIPE (150# ANSI FLANGED).
- OUTLET IS 6" PIPE (GROOVED).
- PURGE OUTLET IS 1-1/2" PIPE.
- MAXIMUM PRESSURE: 150 psi (10.3 bar).
- MAXIMUM FLUID TEMPERATURE: 100°F (37.8°C).
- SPECIFIED FLOWRATE OF 1100 gpm (250 m³/hr).
- FINISH: AS ASSEMBLED.
- POWER REQUIREMENT: 3/60/460V.
- NEMA 4X MOTOR STARTER ENCLOSURE WITH SAFETY DISCONNECT AND H.O.A. SWITCH.
- APPROXIMATE DRY WEIGHT: 1579 lbs (716 kg).
- INLET/OUTLET VALVE KIT, MODEL TCV-1100 RECOMMENDED.
- MINIMUM PIPE TO TB SYSTEM IS 10" PIPE.
- FLOODED SUCTION REQUIRED.

**COMPONENT LIST:**

- ELECTRICAL CONTROL BOX 3/60/460V W/120V TRANSFORMER.
- SEPARATOR: HTX-0500-TC.
- PUMP: 20 HP CENTRIFUGAL, 1750 rpm, 3/60/460V.
- INLET/OUTLET PRESSURE GAUGES: 0-160 psi, GLYCERIN-FILLED.
- PURGE EQUIPMENT: ABV-15-120V.



**FRONT VIEW W/O SPOOL**



**FRONT VIEW PUMP AND SPOOL**

<small>UNLESS OTHERWISE SPECIFIED: DIMENSIONS ARE IN: INCHES (mm) TOLERANCES ARE: FRACTIONS    DECIMALS    ANGLES ± 1"            .XX ± .01            ± 1/4"                   .XXX ± .005            ± 1/8"                   .XXXX ± .0005</small>	ENGINEERED FOR: <b>STANDARD</b>		<small>FRESNO, CALIFORNIA WWW.LAKOS.COM</small>		
	APPROVALS	DATE	TITLE <b>TBX-1100-ABV, TC SYSTEM, SIDESTREAM HTX-0500, 460V 60HZ DELUXE</b>		
	DRAWN <b>DLW</b>	1/5/05			
	MATERIAL PER LAKOS SPEC	ENGR <b>DLW</b>	8/29/07	SIZE <b>C</b>	MODEL NO.
FINISH AS ASSEMBLED	REVIEW -	-	DWG NO. <b>122718</b>	REV. <b>C</b>	
WORK ORDER		QTY.	SCALE 1:12	EST. WT. 1579 lb	SHEET 1 OF 1

DWG NO. 122718  
 SHEET 1 OF 1  
 REV. C