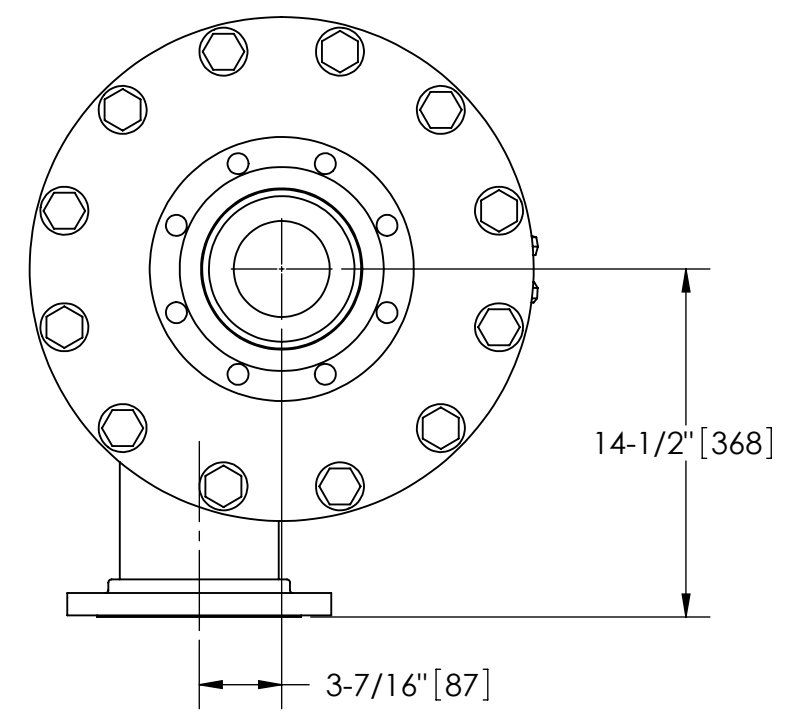
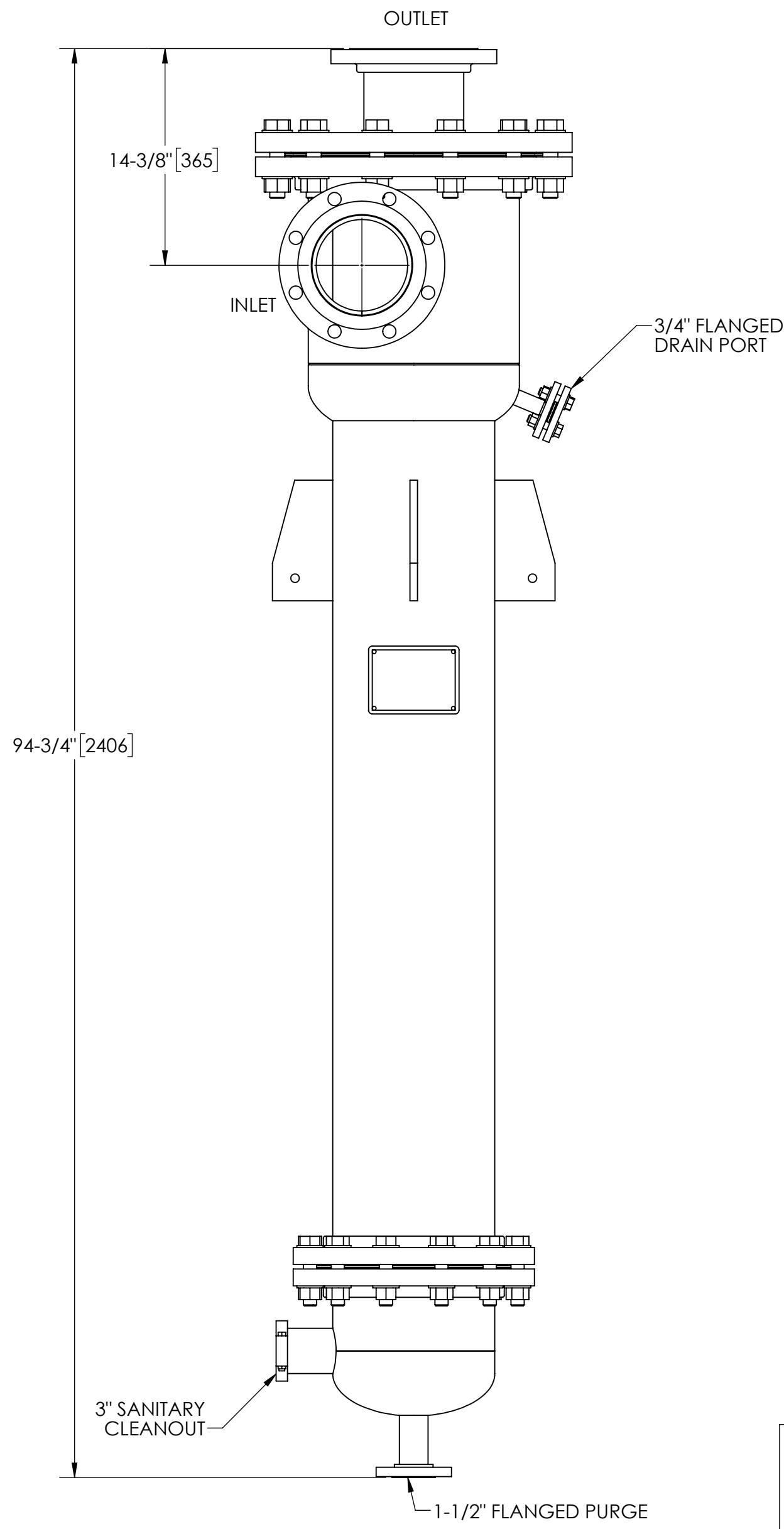


EXCEPT AS OTHERWISE PROVIDED BY CONTRACT, THIS DRAWING AND SPECIFICATIONS SHALL NOT BE REPRODUCED, COPIED OR USED AS THE BASIS FOR MANUFACTURE OR SALE OF MATTER DEPICTED HEREIN WITHOUT THE EXPRESSED WRITTEN PERMISSION OF THE CLAUDE LAVAL CORPORATION, OR ITS ASSIGNEES.

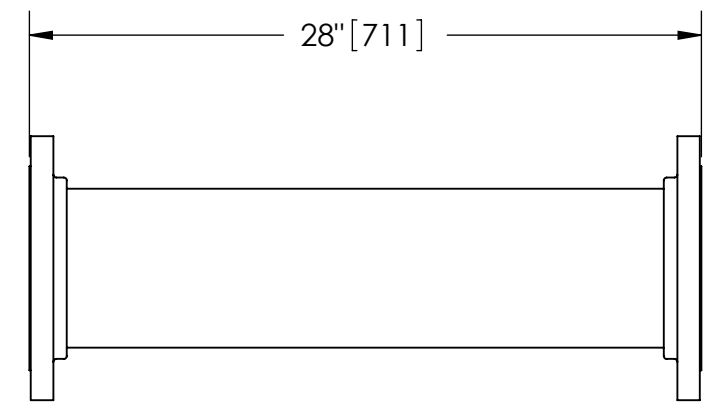
THIS DRAWING HAS BEEN GENERATED AND IS MAINTAINED BY A CAD SYSTEM. CHANGES SHALL ONLY BE INCORPORATED AS DIRECTED BY AN APPROVED ENGINEERING CHANGE ORDER (ECO). PAPER COPIES ARE UNCONTROLLED.

REVISIONS				
ZONE	REV.	DESCRIPTION	DATE	APPROVED

- NOTES:
1. INLET & OUTLET FLANGES ARE 6" 150# RF PER ANSI B16.5 REQUIRING 8X Ø3/4" BOLTS (BOLTS AND GASKETS NOT INCLUDED).
 2. MAXIMUM PRESSURE: 100 psi (6.9 bar).
 3. MAXIMUM TEMPERATURE: 400°F (204°C).
 4. PRESSURE LOSS: 3-12 psi (.2-.8 bar) AT RATED FLOW.
 5. RATED FLOW: 565-1030 gpm (130-235 m³/hr).
 6. APPROXIMATE DRY WEIGHT: 709 lbs (322 kg).
 7. FINISH: GLASS BLAST (EXTERIOR ONLY).
 8. GASKETS: SPIRAL WOUND, 304 SS W/PDTE FILLER.
 9. INLET & OUTLET PRESSURE GAUGE PORTS TO BE SUPPLIED ON CONNECTING PIPING BY END USER.



TOP VIEW



FLANGED SPOOL
MODEL FS-06/S4 (AVAILABLE SEPARATELY)
REQUIRED FOR REMOVAL OF TOP ASSEMBLY

FOR APPROVAL

This drawing is submitted for approval. Manufacture will not proceed until final drawing approval is signed and returned to CLC.

Signature _____

Title _____

Company _____

Date _____

SUBMITTAL DRAWING

This drawing is submitted for spatial consideration only. Do not pre-plumb to these dimensions.

UNLESS OTHERWISE SPECIFIED: DIMENSIONS ARE IN: INCHES (mm) TOLERANCES ARE: FRACTIONS DECIMALS ANGLES ± 1/4" .XX ± .01 ± 1/4" XXX ± .005 XXXX ± .0005		ENGINEERED FOR: 304L SS		LAKOS CLAUDE LAVAL CORP. FRESNO, CALIFORNIA 93727 WWW.LAKOS.COM	
DO NOT SCALE DRAWING		APPROVALS	DATE	TITLE CSX-0565-HV/S4, SEPARATOR, 565-1030 gpm, 304L SS	
MATERIAL	TYPE 304L STAINLESS STEEL	DRAWN	HSK/DLW	5/5/06	
FINISH	GLASS BLAST	ENGR	-	-	
		MFG	-	-	
		WORK ORDER		QTY.	
SCALE	1:8	SIZE	C	MODEL NO.	DWG NO.
					118192
		EST. WT.	709 lb	SHEET	1 OF 1

DWG NO. 118192
SHEET 1
REV. C