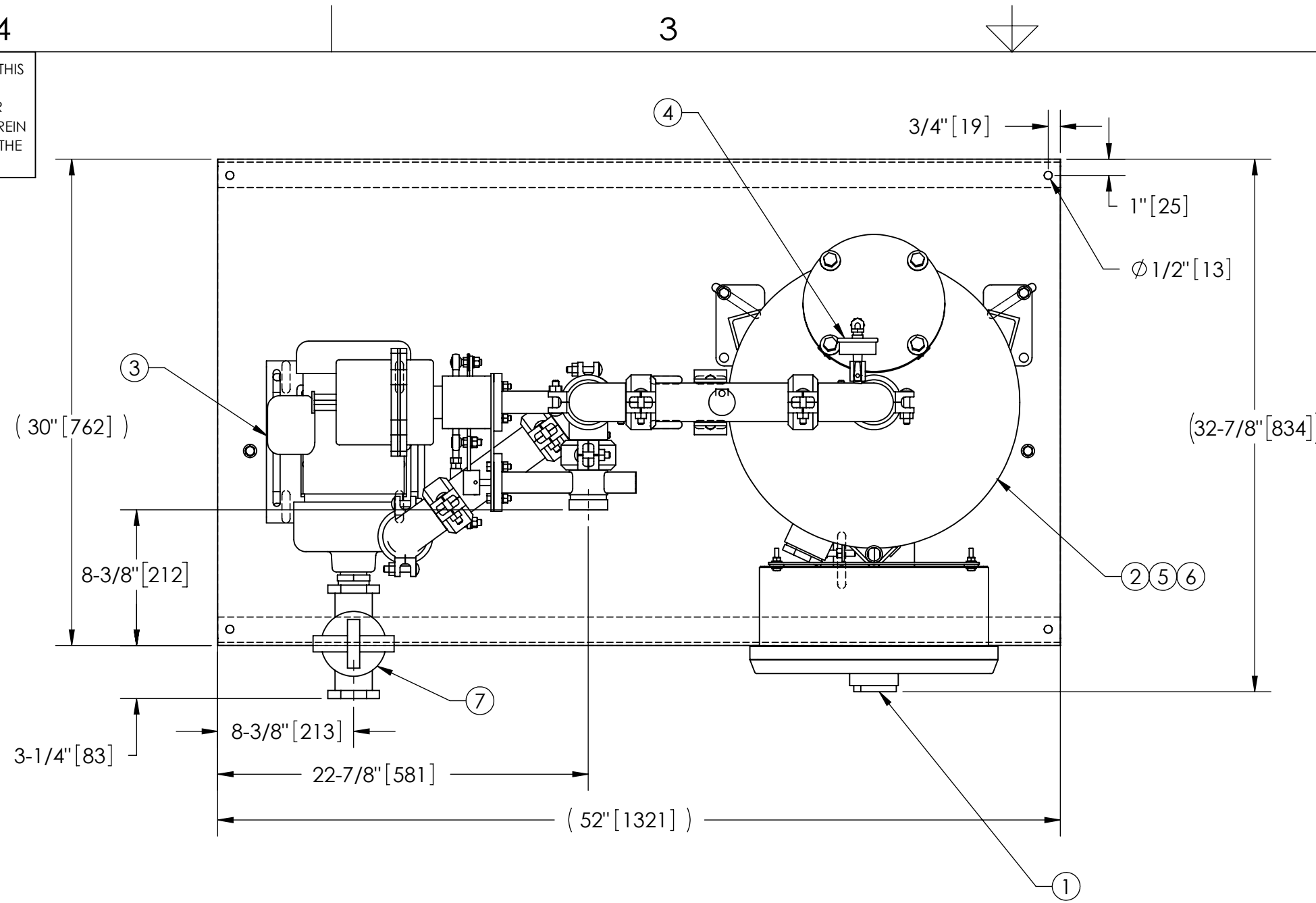


EXCEPT AS OTHERWISE PROVIDED BY CONTRACT, THIS DRAWING AND SPECIFICATIONS SHALL NOT BE REPRODUCED, COPIED OR USED AS THE BASIS FOR MANUFACTURE OR SALE OF MATTER DEPICTED HEREIN WITHOUT THE EXPRESSED WRITTEN PERMISSION OF THE LAKOS CORPORATION, OR ITS ASSIGNEES.

REVISION HISTORY				
ECN	REV	DESCRIPTION	DATE	APPROVED
408	F	UPDATED TANK	11/24/20	TPF



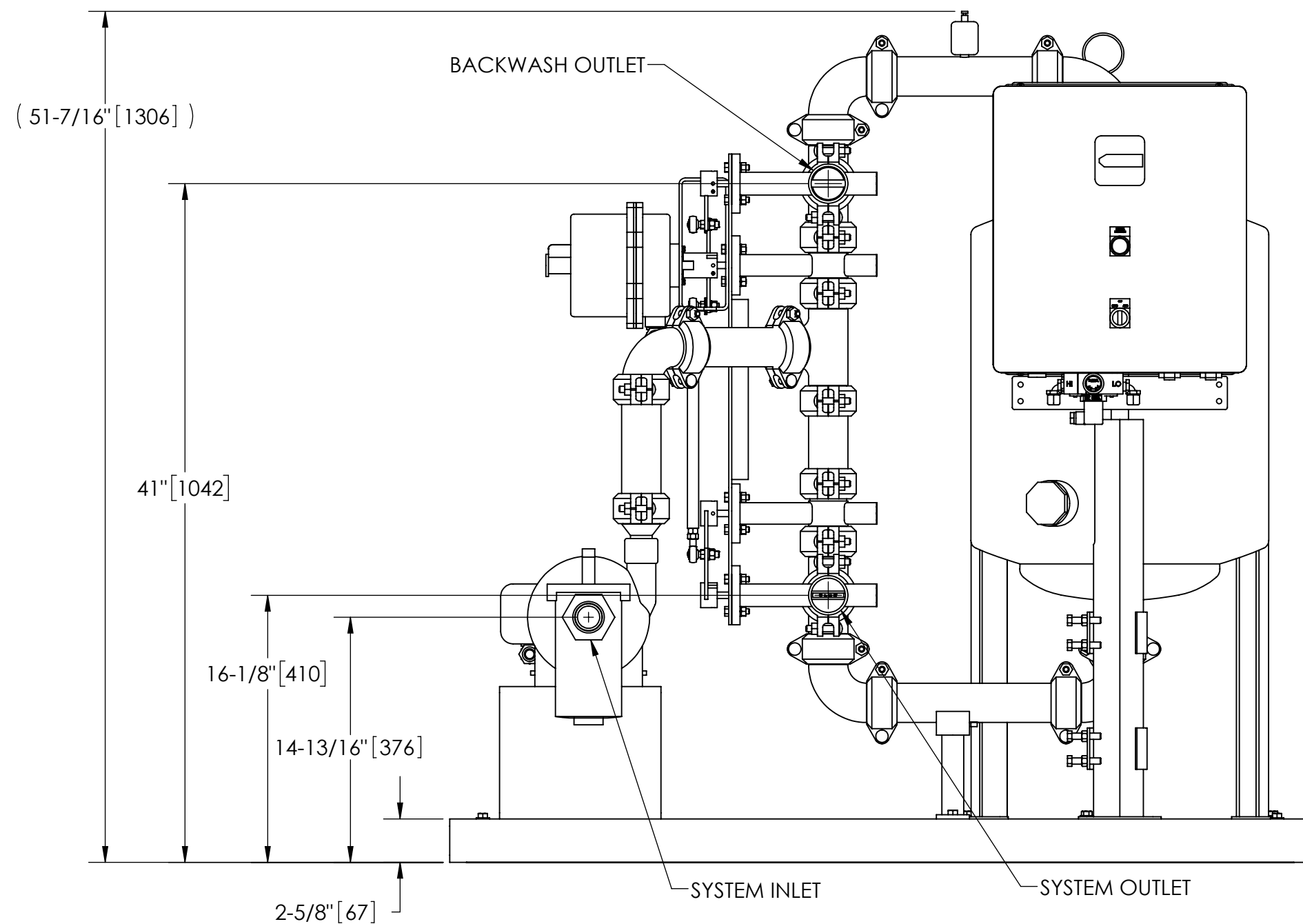
NOTES:

1. INLET IS 1-1/2" PIPE (NPT).
2. OUTLET IS 2" PIPE (GROOVED).
3. BACKWASH IS 2" PIPE (GROOVED).
4. MAXIMUM PRESSURE: 100 psi (6.9 bar).
5. MAXIMUM TEMPERATURE: 100°F (37.8°C).
6. SPECIFIED MAXIMUM FLOWRATE OF 45 gpm (10 m³/hr).
7. SPECIFIED MINIMUM BACKWASH FLOWRATE OF 27 gpm (6 m³/hr).
8. FINISH: AS ASSEMBLED.
9. POWER REQUIREMENT: 3/60/460V.
10. NEMA 4X MOTOR STARTER ENCLOSURE WITH SAFETY DISCONNECT, PLC, H.O.A. SWITCH, 24 HR BACKWASH TIMER, AND BACKWASH CYCLE TIMER.
11. APPROXIMATE DRY WEIGHT (INCLUDING 80 lbs GRAVEL & 200 lbs SAND): 762 lbs (346 kg).
12. MINIMUM PIPE SIZE TO STS SYSTEM IS 1-1/2" PIPE.
13. FLOODED SUCTION REQUIRED.

COMPONENT LIST:

- ① ELECTRICAL CONTROL BOX 460V, 3PH, 60Hz W/120V TRANSFORMER.
- ② MEDIA TANK: 18" DIAMETER STAINLESS STEEL FILTER.
- ③ PUMP: 1 HP CENTRIFUGAL, 3500 rpm, TEFC, 460V, 60Hz, CAST IRON.
- ④ INLET/OUTLET PRESSURE GAUGES: 0-100 psi, GLYCERIN-FILLED.
- ⑤ MEDIA: 10 MICRON AT 95% EFFICIENCY - STANDARD
5 MICRON AT 90% EFFICIENCY - OPTIONAL
- ⑥ UNDERDRAIN: STAINLESS STEEL UNDERDRAIN, STAINLESS STEEL ELEMENTS W/ V-SHAPED SLOTS.
- ⑦ BASKET STRAINER, CAST IRON.

THIS DRAWING HAS BEEN GENERATED AND IS MAINTAINED BY A CAD SYSTEM. CHANGES SHALL ONLY BE INCORPORATED AS DIRECTED BY AN APPROVED ENGINEERING CHANGE ORDER (ECO). PAPER COPIES ARE UNCONTROLLED.



UNLESS OTHERWISE SPECIFIED: DIMENSIONS ARE IN: INCHES (mm) TOLERANCES ARE: FRACTIONS DECIMALS ANGLES ± 1" .XX ± .01 ± 1/4° .XXX ± .005 .XXXX ± .0005		ENGINEERED FOR: STANDARD			
DO NOT SCALE DRAWING		APPROVALS	DATE		
MATERIAL	PER LAKOS SPEC	DRAWN	ADJ/DLW	4/19/06	TITLE STS-18-045-A-S, SS MEDIA SYSTEM, SYSTEM BW, AUTO, 460V 60HZ
FINISH	AS ASSEMBLED	ENGR	ADJ	6/10/08	
SCALE: 1:8		REVIEW	-	-	SIZE: C
EST. WT. 482 lb		WORK ORDER	-	-	MODEL NO.
SHEET 1 OF 1		DWG NO. 117976		REV. F	DWG NO. 117976

DWG NO. 117976 SH 1 REV. F