

EXCEPT AS OTHERWISE PROVIDED BY CONTRACT, THIS DRAWING AND SPECIFICATIONS SHALL NOT BE REPRODUCED, COPIED OR USED AS THE BASIS FOR MANUFACTURE OR SALE OF MATTER DEPICTED HEREIN WITHOUT THE EXPRESSED WRITTEN PERMISSION OF THE CLAUDE LAVAL CORPORATION, OR ITS ASSIGNEES.

THIS DRAWING HAS BEEN GENERATED AND IS MAINTAINED BY A CAD SYSTEM. CHANGES SHALL ONLY BE INCORPORATED AS DIRECTED BY AN APPROVED ENGINEERING CHANGE ORDER (ECO).
PAPER COPIES ARE UNCONTROLLED.

REVISIONS				
ZONE	REV.	DESCRIPTION	DATE	APPROVED

D

C

B

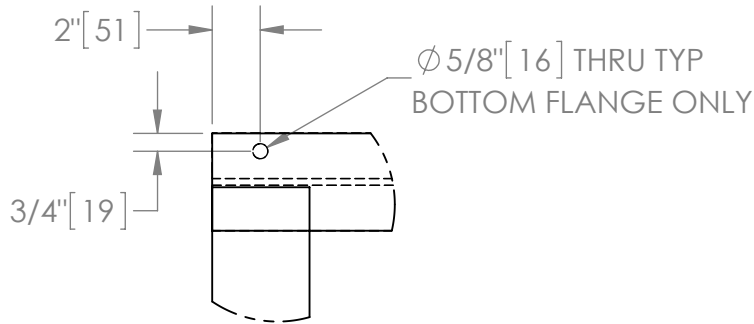
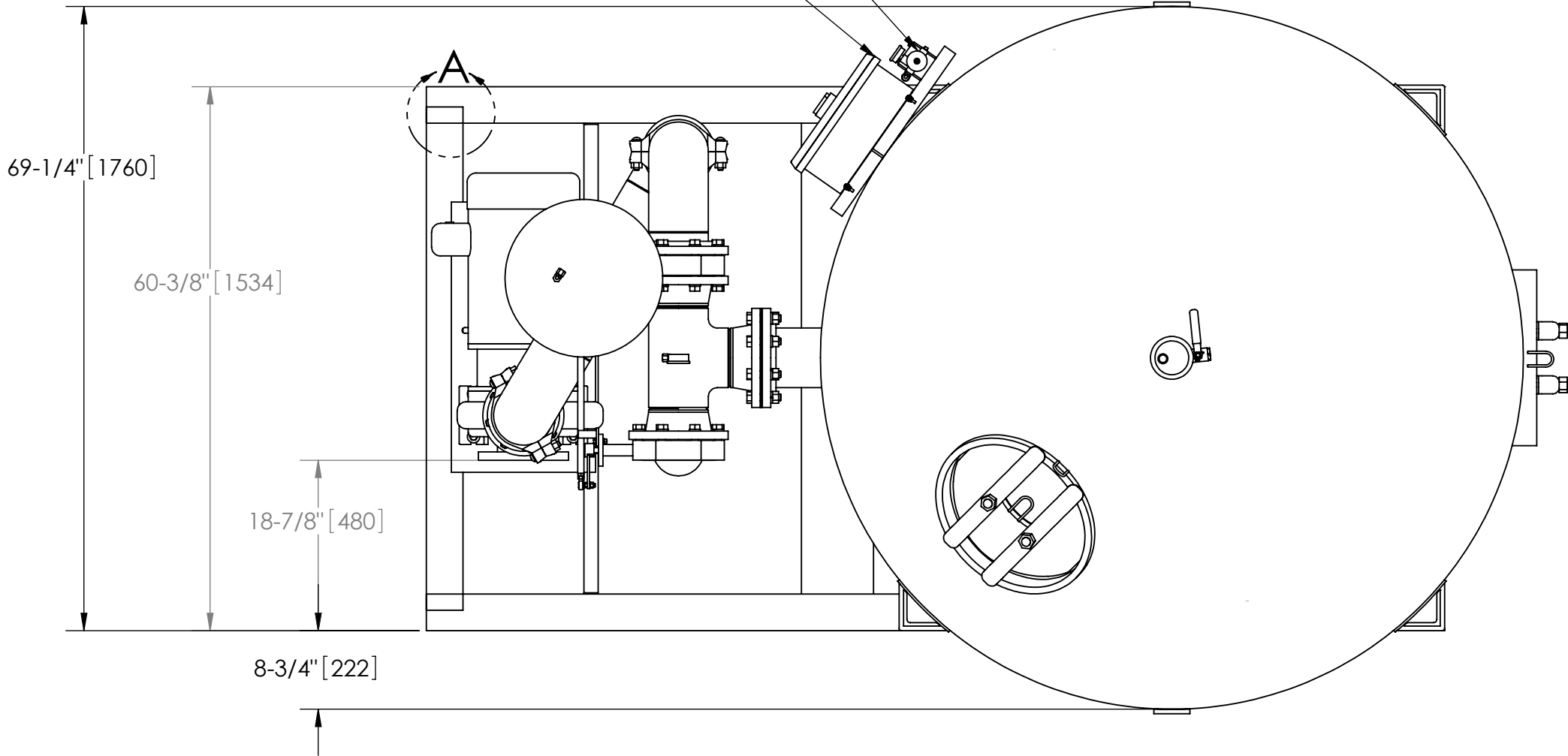
A

D

C

B

A



NOTES:

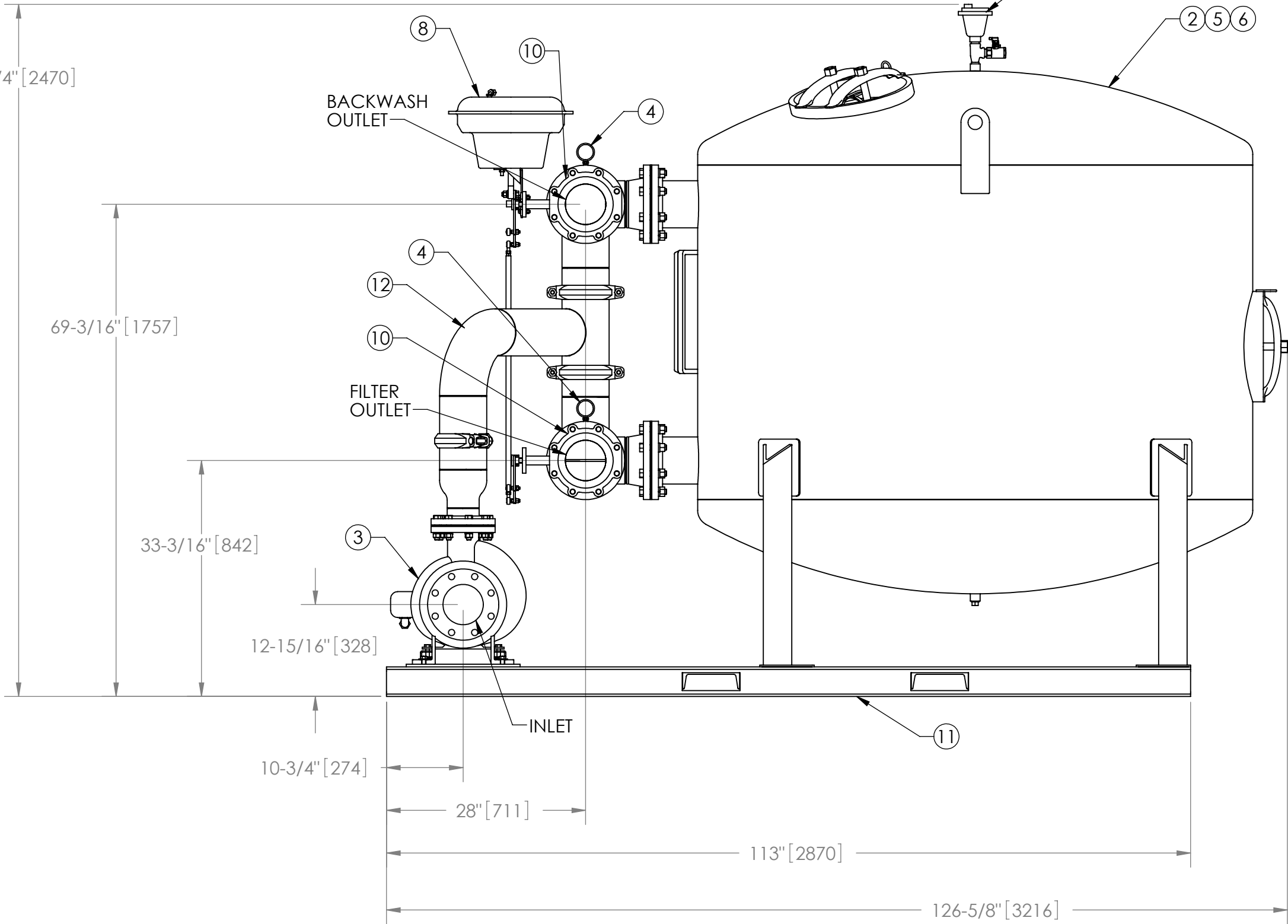
1. INLET IS 5" PIPE (ANSI FLANG).
2. OUTLET IS 6" PIPE (150# ANSI FLANG).
3. BACKWASH IS 6" PIPE (150# ANSI FLANG).
4. MAXIMUM PRESSURE 50 psi (3.4 bar).
5. MAXIMUM OPERATING TEMPERATURE: 100°F (37.8°C).
6. SPECIFIED FLOWRATE OF 664 gpm (301 m³/hr).
7. SPECIFIED BACKWASH FLOWRATE OF 498 gpm (226 m³/hr).
8. FINISH: AS ASSEMBLED.
9. POWER REQUIREMENT: 460V, 3PH, 60Hz.
10. UL LISTED NEMA 4X MOTOR STARTER ENCLOSURE WITH SAFETY DISCONNECT, H.O.A. SWITCH, 24 HR BACKWASH TIMER, AND BACKWASH CYCLE TIMER.
11. APPROXIMATE DRY WEIGHT (NOT INCLUDING GRAVEL/SAND): 3862 lbs (1751 kg).
12. MINIMUM PIPE SIZE TO CTS SYSTEM IS 6" PIPE.
13. FLOODED SUCTION REQUIRED.



COMPONENT LIST:

- ① ELECTRICAL CONTROL BOX 460V 60Hz W/120V TRANSFORMER.
- ② MEDIA TANK: 78" CARBON STEEL.
- ③ PUMP: 15 HP CENTRIFUGAL, 1750 rpm, TEFC, 460V, 60Hz, CAST IRON.
- ④ INLET/OUTLET PRESSURE GAUGES: 0-100 psi, GLYCERIN-FILLED.
- ⑤ MEDIA: 10 MICRON AT 95% EFFICIENCY - STANDARD
5 MICRON AT 90% EFFICIENCY - OPTIONAL
- ⑥ UNDERDRAIN: S/80 PVC HEADER, S/40 SLOTTED PVC PIPE.
- ⑦ AIR RELIEF VALVE: 3/4" CAST IRON AUTOVENT W/MANUAL VALVE.
- ⑧ PNEUMATIC ACTUATOR: CAST IRON BODY, NEOPRENE DIAPHRAGM.
REQUIRED AIR PRESSURE FOR OPERATION: 15 psi (1.0 bar).
- ⑨ AIR REGULATOR & FILTER: 22 scfm (33 m³/hr) MAXIMUM AIRFLOW.
- ⑩ BUTTERFLY VALVE: CAST IRON BODY, EPDM SEATS.
- ⑪ CARBON STEEL SKID.
- ⑫ CARBON STEEL MANIFOLD PIPING.

SUBMITTAL DRAWING

This drawing is submitted for spatial consideration only. Do not pre-plumb to these dimensions.



UNLESS OTHERWISE SPECIFIED: DIMENSIONS ARE IN: INCHES [mm] TOLERANCES ARE: FRACTIONS DECIMALS ANGLES ± 1" .XX ± .01 ± 1/4" .XXX ± .005 .XXXX ± .0005			ENGINEERED FOR:		LAKOS. CLAUDE LAVAL CORP. FRESNO, CALIFORNIA 93727 WWW.LAKOS.COM		 LAVAL UNDERGROUND SURVEYS	
			STANDARD					
DO NOT SCALE DRAWING			APPROVALS		DATE		TITLE CTS-78-664-A-S, CS MEDIA SYSTEM, SYSTEM BW, AUTO, 3/60/460V	
			DRAWN ADJ		12/21/07			
MATERIAL PER LAKOS SPEC			ENGR ADJ		12/21/07		SIZE MODEL NO. DWG NO. 128876 REV. -	
			MFG - -					
FINISH AS ASSEMBLED			WORK ORDER		QTY.		SCALE 1:16  EST. WT. 3862 lb SHEET 1 OF 1	