

4

3

2

1

EXCEPT AS OTHERWISE PROVIDED BY CONTRACT, THIS DRAWING AND SPECIFICATIONS SHALL NOT BE REPRODUCED, COPIED OR USED AS THE BASIS FOR MANUFACTURE OR SALE OF MATTER DEPICTED HEREIN WITHOUT THE EXPRESSED WRITTEN PERMISSION OF THE LAKOS CORPORATION, OR ITS ASSIGNEES.

THIS DRAWING HAS BEEN GENERATED AND IS MAINTAINED BY A CAD SYSTEM. CHANGES SHALL ONLY BE INCORPORATED AS DIRECTED BY AN APPROVED ENGINEERING CHANGE ORDER (ECO). PAPER COPIES ARE UNCONTROLLED.

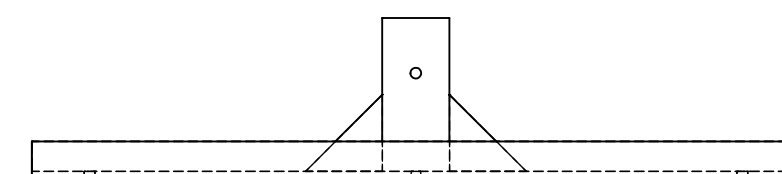
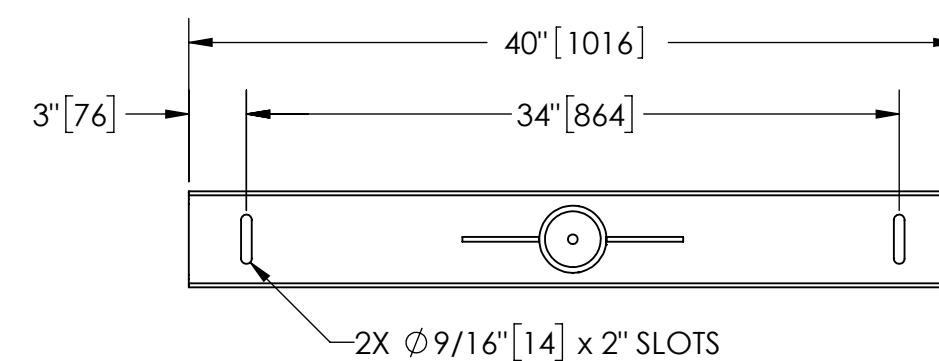
REVISIONS				
ECN	REV.	DESCRIPTION	DATE	APPROVED
	A	RELEASED FOR PRODUCTION	1/29/21	TPF

NOTES:

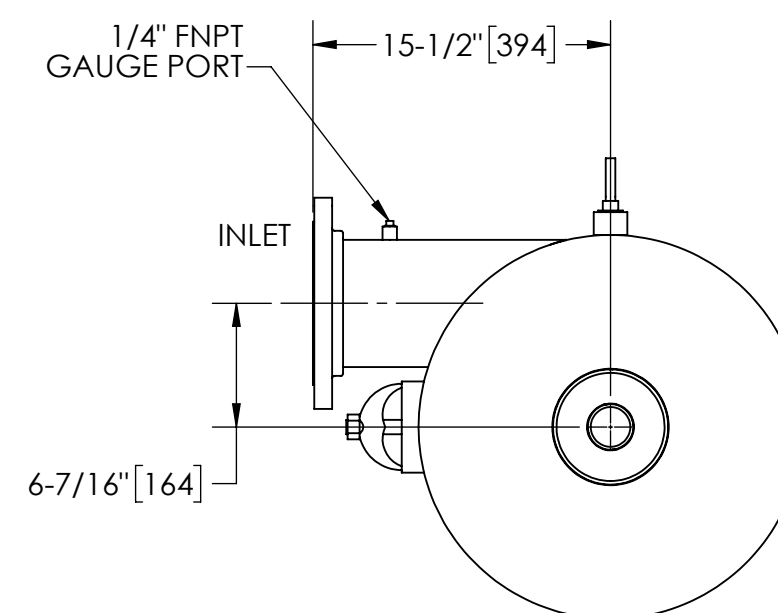
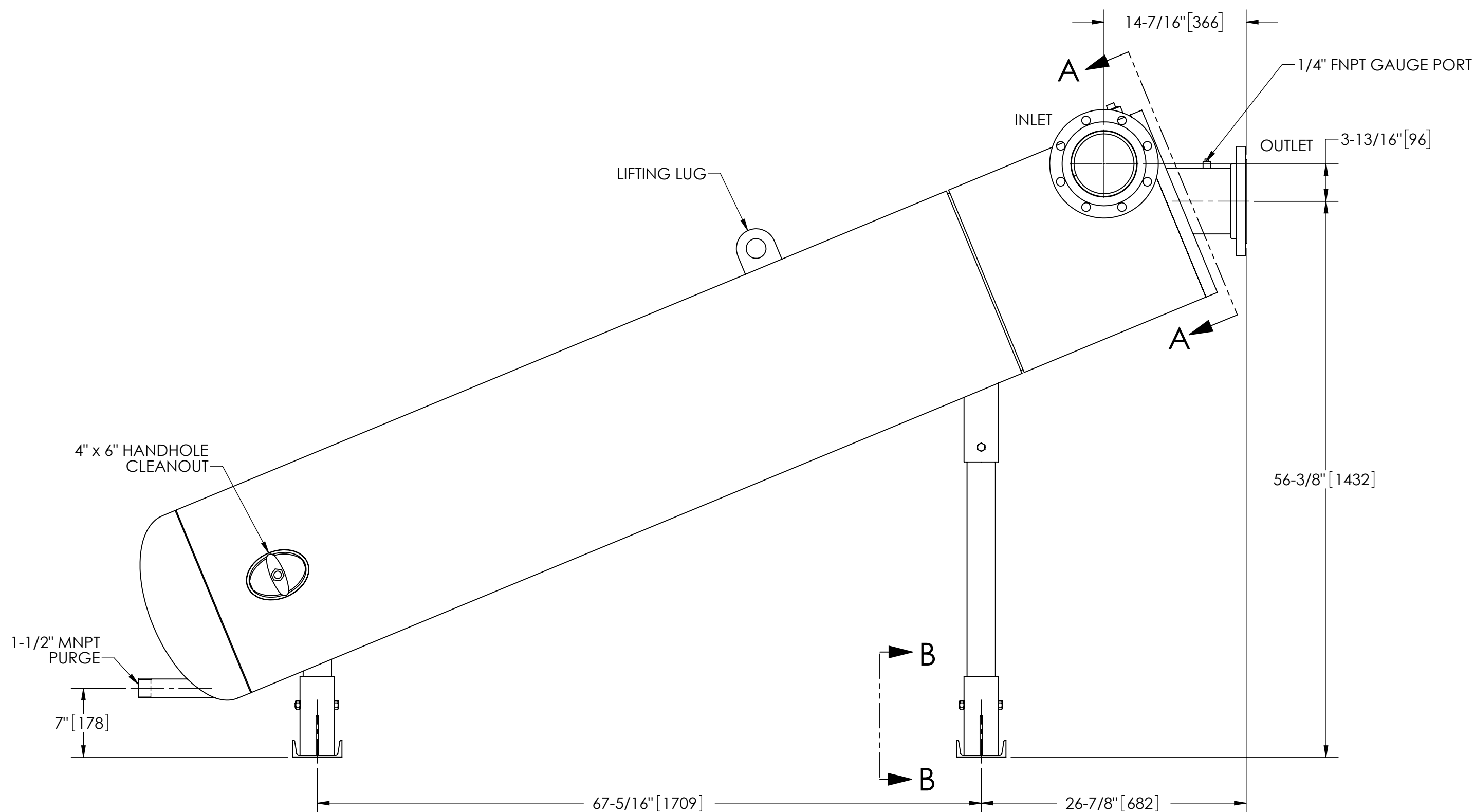
1. INLET & OUTLET FLANGES ARE 6" 150# RF PER ANSI B16.5 REQUIRING 8X ϕ 3/4" BOLTS (BOLTS AND GASKETS NOT INCLUDED).
2. MAXIMUM PRESSURE: 150 psi (10.3 bar).
3. MAXIMUM TEMPERATURE: 180°F (82°C).
4. PRESSURE LOSS: 3-15 psid (.21-1.03 bar) AT RATED FLOW.
5. RATED FLOW: 550-1200 gpm (125-273 m³/hr).
6. APPROXIMATE DRY WEIGHT: 1128 lbs (512 kg).
7. FINISH: POWDERCOAT LAKOS MEDIUM GRAY RAL-7005 (EXTERIOR ONLY).
8. CERTIFIED UNDER NSF/ANSI STANDARD NSF 61 & ANNEX G.

SUBMITTAL DRAWING

This drawing is submitted for spatial consideration only. Do not pre-plumb to these dimensions.



SECTION B-B



SECTION A-A

UNLESS OTHERWISE SPECIFIED:
DIMENSIONS ARE IN: INCHES [mm]
TOLERANCES ARE:

FRACTIONS	DECIMALS	ANGLES
$\pm 1/2"$.XX $\pm .01$	$\pm 1/4^\circ$
	.XXX $\pm .005$	
	.XXXX $\pm .0005$	

DO NOT SCALE DRAWING

MATERIAL	CLASS P-1 MILD CARBON STEEL
FINISH	POWDERCOAT LAKOS MEDIUM GRAY RAL-7005

ENGINEERED FOR:	STANDARD	
APPROVALS	DATE	
DRAWN	AMR	12/23/15
ENGR		
REVIEW		
WORK ORDER		



TITLE			
PWC-1060-L, SEPARATOR, 550-1200 GPM, CARBON STEEL			
SIZE	MODEL NO.	DWG NO.	REV.
C		133379-09	A
SCALE	EST. WT.	SHEET	
1:10	1128 lb	1 OF 1	

4

3

2

1

DWG NO. 133379-09
 SH 1
 REV. A