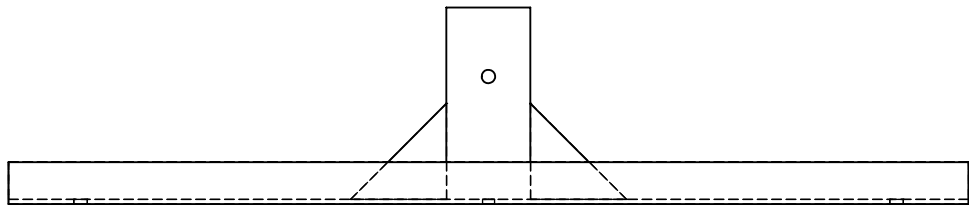
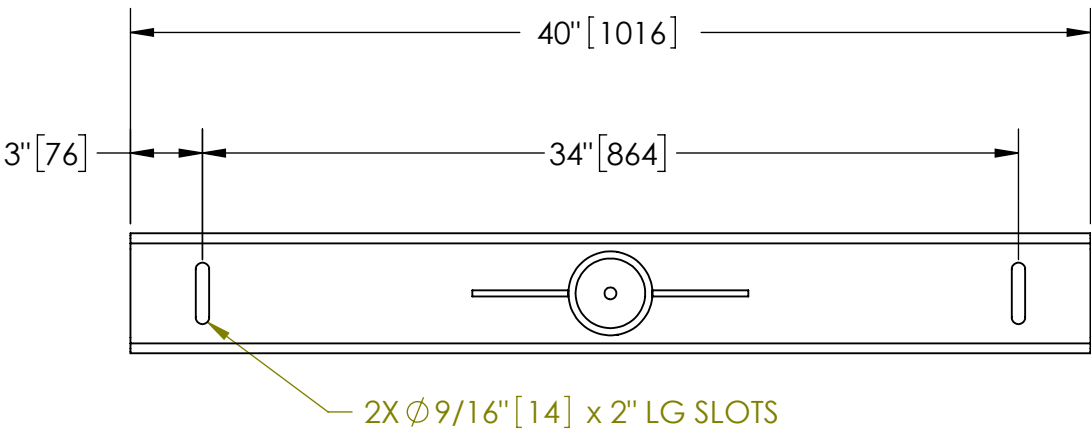


EXCEPT AS OTHERWISE PROVIDED BY CONTRACT, THIS DRAWING AND SPECIFICATIONS SHALL NOT BE REPRODUCED, COPIED OR USED AS THE BASIS FOR MANUFACTURE OR SALE OF MATTER DEPICTED HEREIN WITHOUT THE EXPRESSED WRITTEN PERMISSION OF THE LAKOS CORPORATION, OR ITS ASSIGNEES.

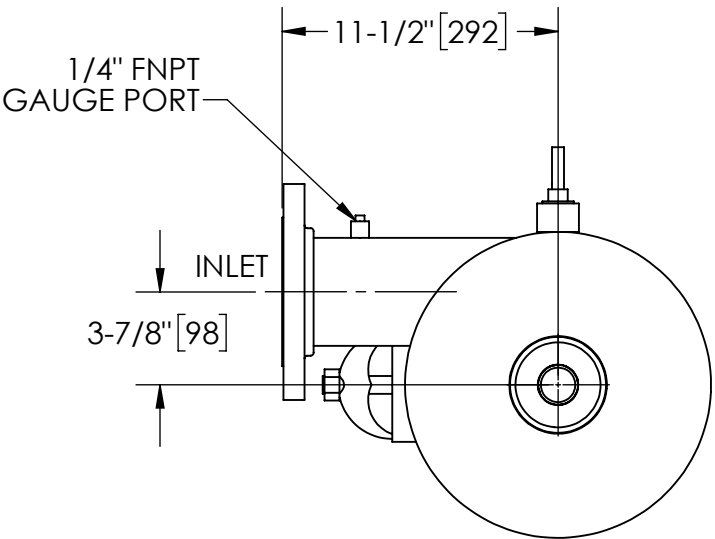
REVISIONS				
ECN	REV.	DESCRIPTION	DATE	APPROVED
	A	RELEASE FOR MANUFACTURING	5/31/2022	TRR

NOTES:

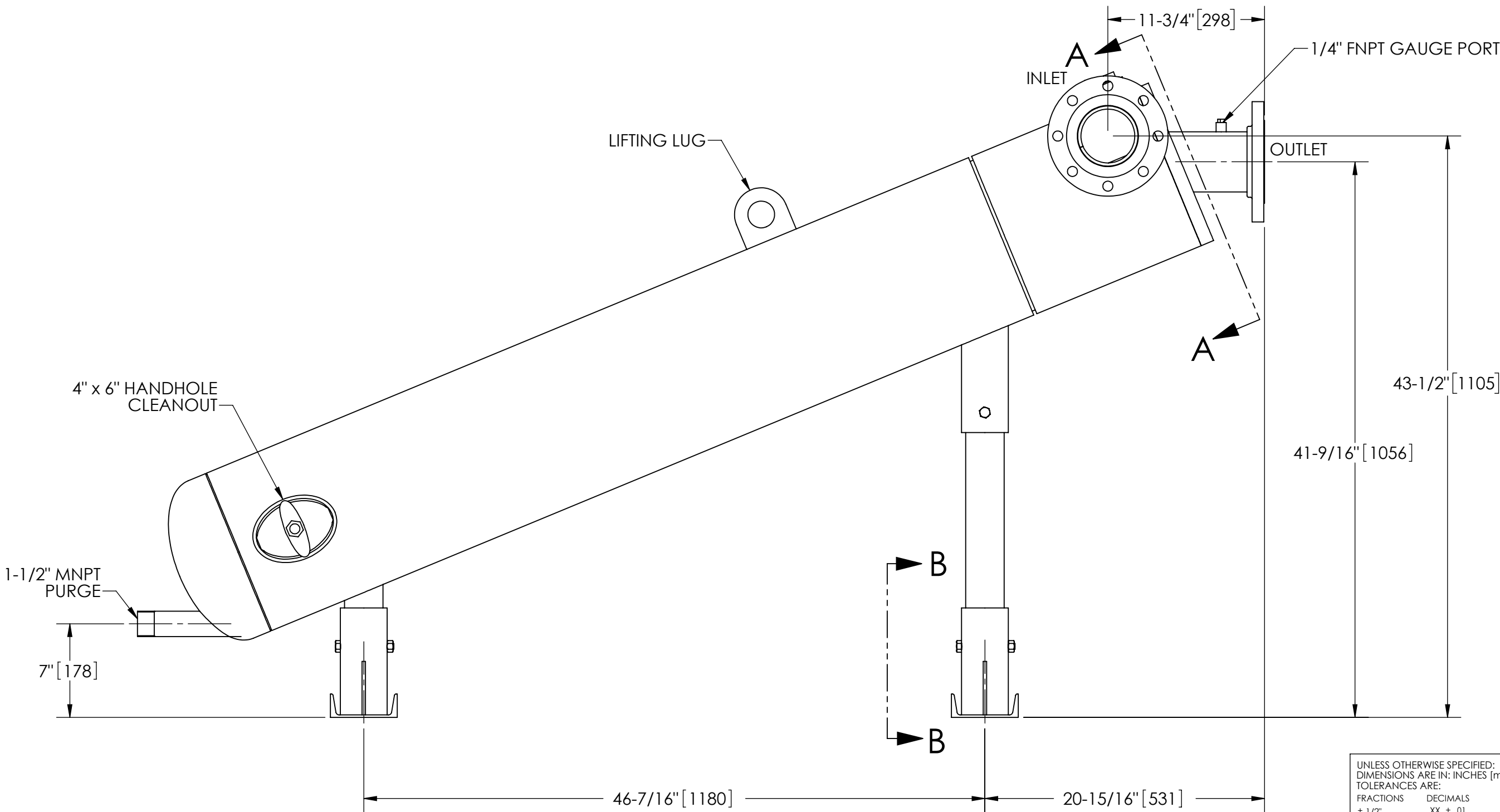
1. INLET & OUTLET FLANGES ARE 4" 150# RF PER ANSI B16.5 REQUIRING 8X \varnothing 5/8" BOLTS (BOLTS AND GASKETS NOT INCLUDED).
2. MAXIMUM PRESSURE: 150 psi (10.3 bar).
3. MAXIMUM TEMPERATURE: 180°F (82°C).
4. PRESSURE LOSS: 3-15 psid (.21-1.03 bar) AT RATED FLOW.
5. RATED FLOW: 240-540 gpm (55-123 m³/hr).
6. APPROXIMATE DRY WEIGHT: 556 lbs (252 kg).
7. FINISH: POWDERCOAT LAKOS MEDIUM GRAY RAL-7005 (EXTERIOR ONLY).
8. CERTIFIED UNDER NSF/ANSI STANDARD NSF-61 & ANNEX G.




SECTION B-B



SECTION A-A



UNLESS OTHERWISE SPECIFIED: DIMENSIONS ARE IN: INCHES [mm] TOLERANCES ARE: FRACTIONS DECIMALS ANGLES $\pm 1/2"$.XX $\pm .01$ $\pm 1/4^\circ$ XXX $\pm .005$ XXXX $\pm .0005$			ENGINEERED FOR: STANDARD		 FRESNO, CALIFORNIA WWW.LAKOS.COM	
DO NOT SCALE DRAWING			APPROVALS	DATE		
MATERIAL CLASS P-1 MILD CARBON STEEL			DRAWN TRR	5/31/22	TITLE PWC-1040-L, SEPARATOR 4" PWC LOW PROFILE 9:00, CARBON STEEL	
FINISH POWDERCOAT LAKOS MEDIUM GRAY RAL-7005			ENGR			
			REVIEW		SIZE C	MODEL NO.
			WORK ORDER		SCALE 1:8	DWG NO. 133375-09
						EST. WT. 556 lb
						SHEET 1 OF 1

DWG NO.

133375-09

SH

1

REV.

A

A