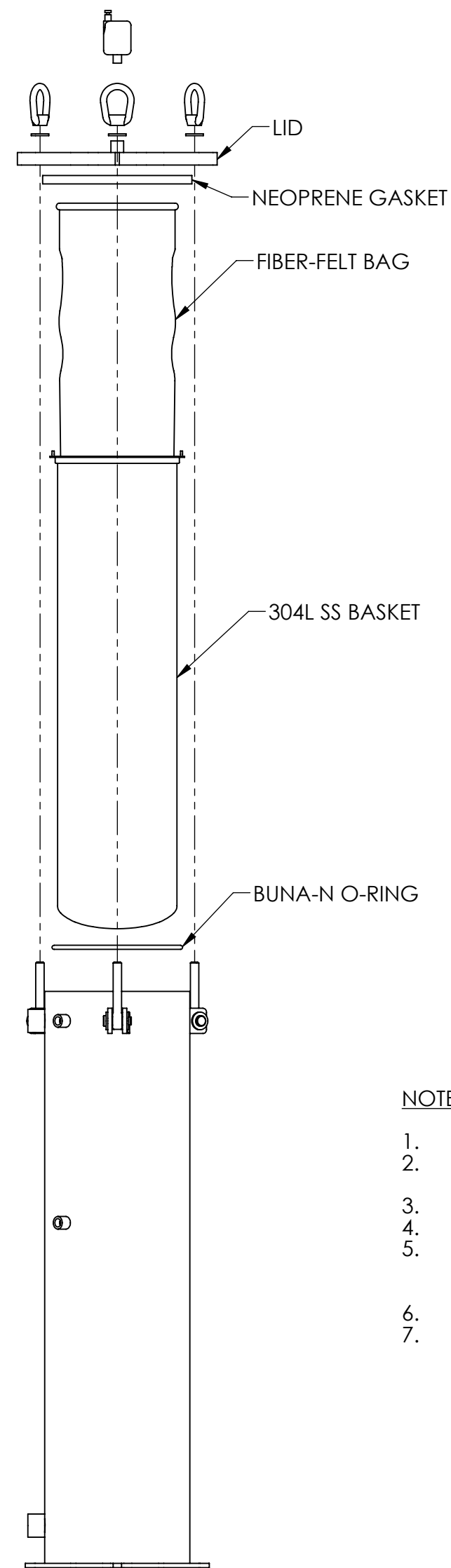
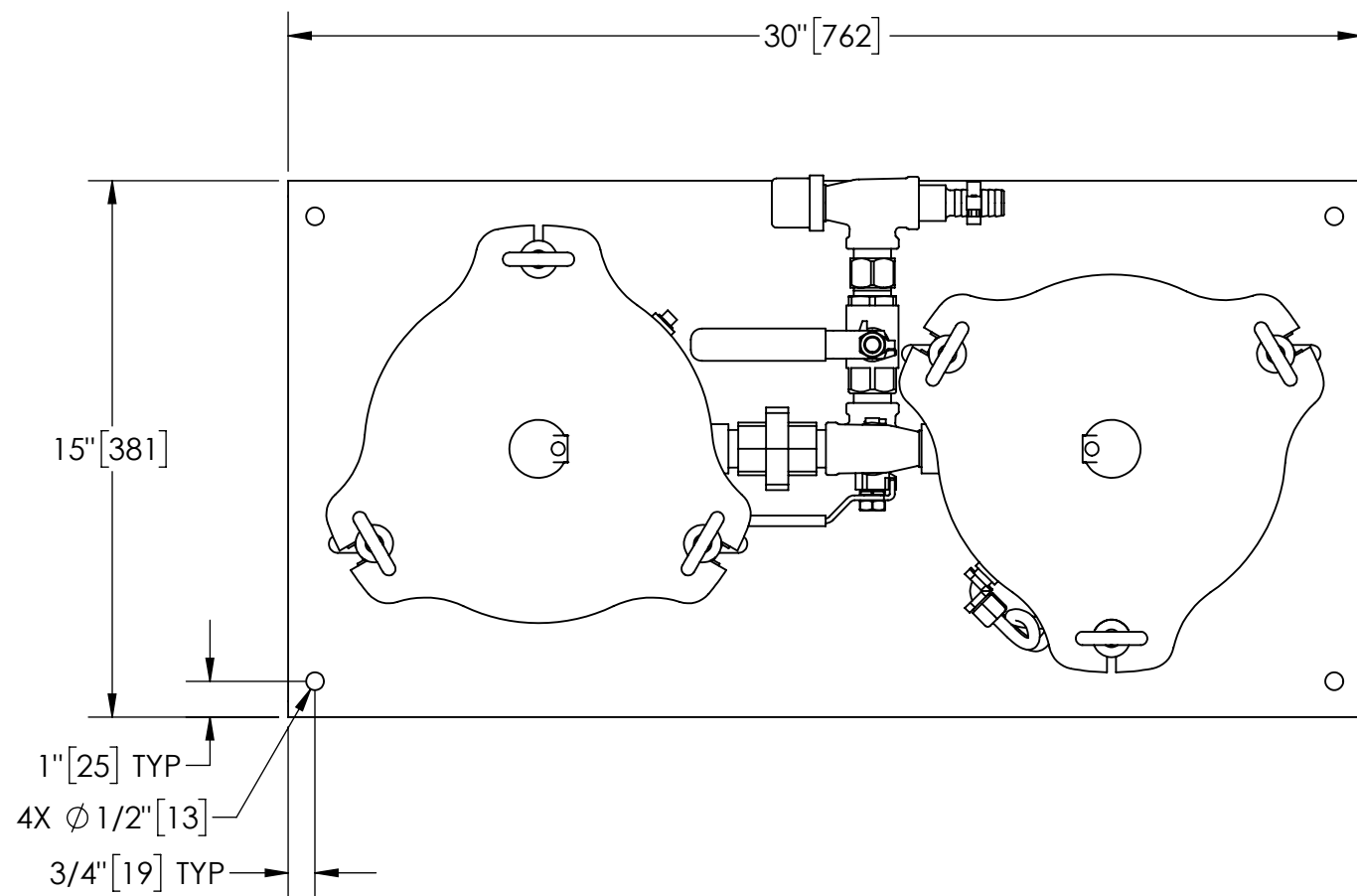


EXCEPT AS OTHERWISE PROVIDED BY CONTRACT, THIS DRAWING AND SPECIFICATIONS SHALL NOT BE REPRODUCED, COPIED OR USED AS THE BASIS FOR MANUFACTURE OR SALE OF MATTER DEPICTED HEREIN WITHOUT THE EXPRESSED WRITTEN PERMISSION OF THE LAKOS CORPORATION, OR ITS ASSIGNEES.

REVISIONS				
ECN	REV.	DESCRIPTION	DATE	APPROVED

THIS DRAWING HAS BEEN GENERATED AND IS MAINTAINED BY A CAD SYSTEM. CHANGES SHALL ONLY BE INCORPORATED AS DIRECTED BY AN APPROVED ENGINEERING CHANGE ORDER (ECO). PAPER COPIES ARE UNCONTROLLED.

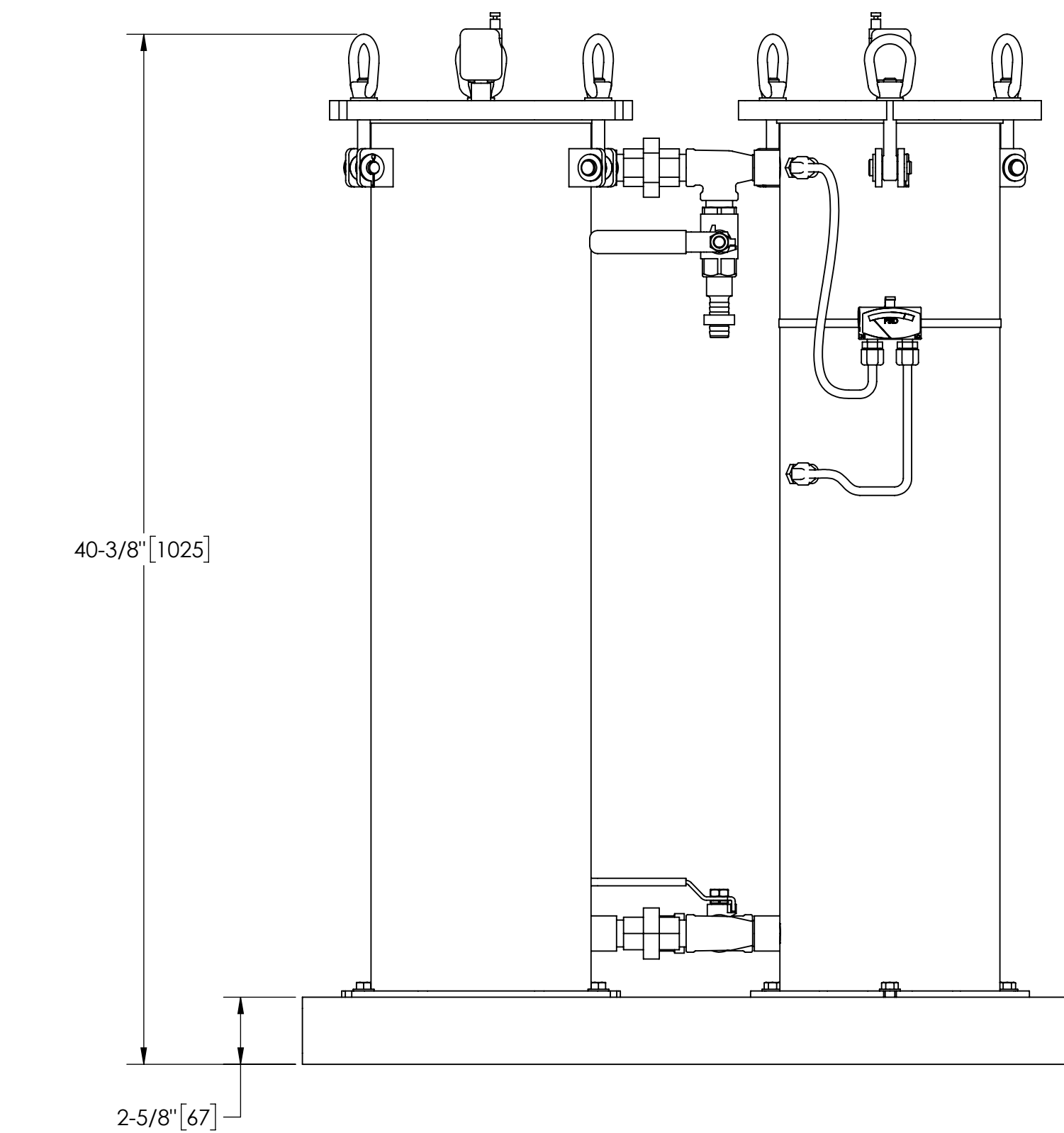


NOTES:

1. MAXIMUM PRESSURE: 150 psi (10.3 bar).
2. COLLECTION BAG MATERIAL IS POLYESTER FELT 10 MICRON (TWO INCLUDED). 50 MICRON BAGS AVAILABLE.
3. BAG STORAGE CAPACITY IS 50 lbs (22.7 kg) PER BAG.
4. TANK VOLUME IS APPROXIMATELY 8 GALLONS (.03 m<sup>3</sup>) PER TANK.
5. TANKS ARE MADE OF 304L STAINLESS STEEL. LIDS ARE 304L STAINLESS STEEL. BOLT HARDWARE IS 304 STAINLESS STEEL.
6. APPROXIMATE DRY WEIGHT: 196 lbs (89 kg).
7. MAXIMUM TEMPERATURE: 122 °F (50 °C).

**SUBMITTAL DRAWING**

This drawing is submitted for spatial consideration only. Do not pre-plumb to these dimensions.



UNLESS OTHERWISE SPECIFIED: DIMENSIONS ARE IN: INCHES [mm] TOLERANCES ARE: FRACTIONS DECIMALS ANGLES ± 1/4" .XX ± .01 ± 1/4° .XXX ± .005 .XXXX ± .0005		ENGINEERED FOR: <b>304 BOLTING</b>			
DO NOT SCALE DRAWING		APPROVALS	DATE	TITLE	
MATERIAL PER LAKOS SPEC		DRAWN	1/3/20	SRV-2-833, DUAL SRV SYSTEM, 304 BOLTING	
FINISH AS ASSEMBLED		ENGR	-	8" DIA x 33" BAG 3/4" INLET 3/4" OUTLET, SS	
		REVIEW	-	SIZE	MODEL NO.
		WORK ORDER	-	C	
				DWG NO.	REV.
				183686	A
				SCALE	EST. WT.
				3:16	196 lb
				SHEET	1 OF 1

DWG. NO. 183686 SH 1 REV. A