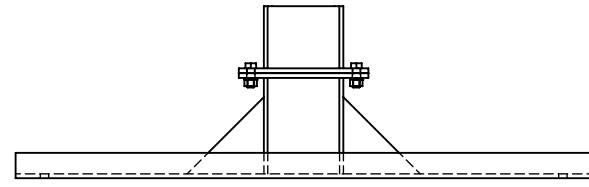
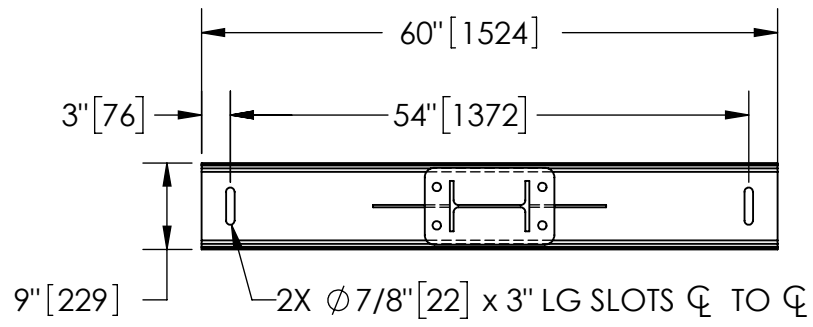


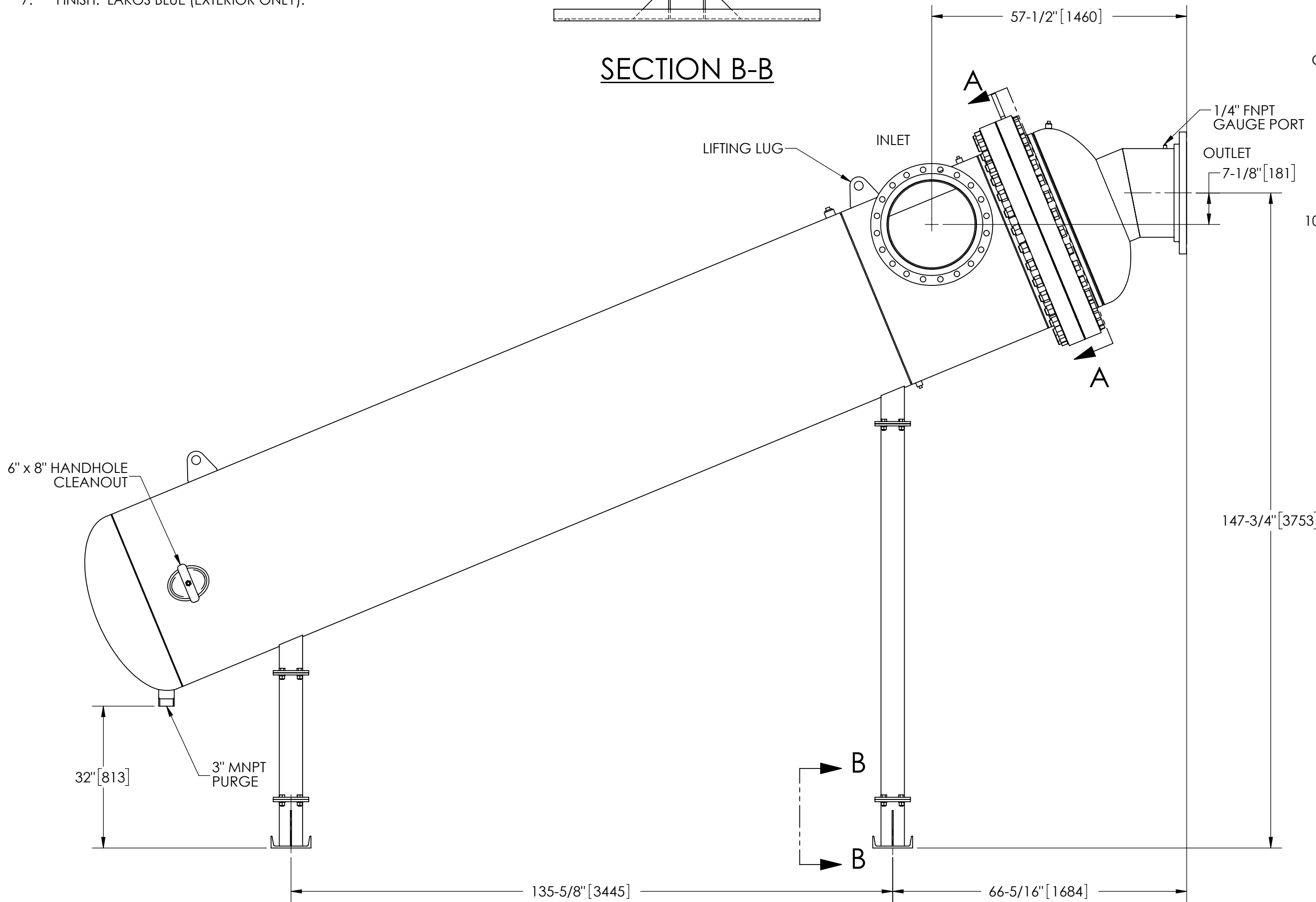
EXCEPT AS OTHERWISE PROVIDED BY CONTRACT, THIS DRAWING AND SPECIFICATIONS SHALL NOT BE REPRODUCED, COPIED OR USED AS THE BASIS FOR MANUFACTURE OR SALE OF MATTER DEPICTED HEREIN WITHOUT THE EXPRESSED WRITTEN PERMISSION OF THE CLAUDE LAVAL CORPORATION, OR ITS ASSIGNEES.

NOTES:

1. INLET & OUTLET FLANGES ARE 20" 150# RF PER ANSI B16.5 REQUIRING 20X ϕ 1-1/8" BOLTS (BOLTS AND GASKETS NOT INCLUDED).
2. MAXIMUM PRESSURE: 150 psi (10.3 bar).
3. MAXIMUM TEMPERATURE: 180°F (82.2°C).
4. PRESSURE LOSS: 3-12 psid (.2-.8 bar) AT RATED FLOW.
5. RATED FLOW: 6700-12750 gpm (1520-2895 m³/hr).
6. APPROXIMATE DRY WEIGHT: 9282 lbs (4210 kg).
7. FINISH: LAKOS BLUE (EXTERIOR ONLY).

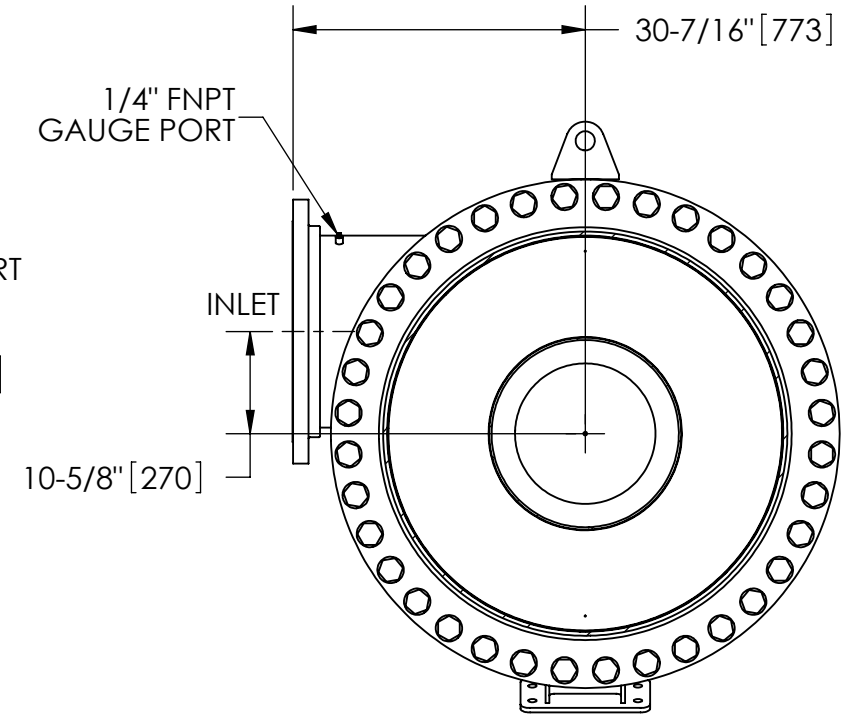


SECTION B-B

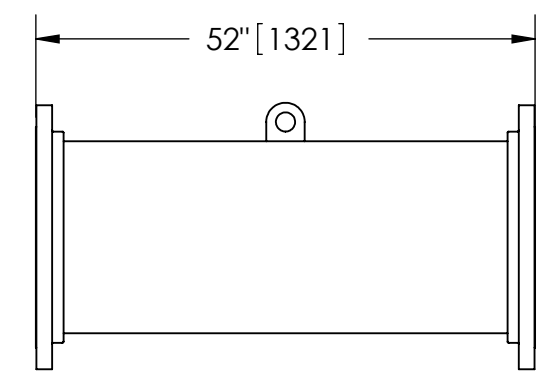


REVISION HISTORY				
ZONE	REV	DESCRIPTION	DATE	APPROVED
	A	RELEASED FOR SUBMITTAL	7/20/20	AMF
	B	UPDATE BODY FLANGES TO B16.47 150# RFWN	4/19/21	TPF
	C	UPDATE TO INTERNAL VORTUBE	6/15/23	AMF

THIS DRAWING HAS BEEN GENERATED AND IS MAINTAINED BY A CAD SYSTEM. CHANGES SHALL ONLY BE INCORPORATED AS DIRECTED BY AN APPROVED ENGINEERING CHANGE ORDER (ECO). PAPER COPIES ARE UNCONTROLLED.



SECTION A-A



FLANGED SPOOL
MODEL FS-20 (AVAILABLE SEPARATELY)
REQUIRED FOR REMOVAL OF TOP ASSEMBLY

SUBMITTAL DRAWING

This drawing is submitted for spatial consideration only. Do not pre-plumb to these dimensions.

UNLESS OTHERWISE SPECIFIED: DIMENSIONS ARE IN: INCHES [mm] TOLERANCES ARE: FRACTIONS DECIMALS ANGLES $\pm 1/2"$.XX $\pm .01$ $\pm 1/4^\circ$.XXX $\pm .005$.XXXX $\pm .0005$		ENGINEERED FOR: FLANGED			
DO NOT SCALE DRAWING		APPROVALS	DATE	TITLE	
MATERIAL: CLASS P-1 MILD CARBON STEEL		DRAWN: CAG	9/5/12	JPX-6700-L/FLG, SEPARATOR, 6700-12750 gpm, CARBON STEEL	
FINISH: LAKOS BLUE		ENGR: -	-	SIZE: C	MODEL NO.:
		MFG: -	-	SCALE: 1:20	DWG NO. 125884
		WORK ORDER	QTY.	EST. WT. 9282 lb	SHEET 1 OF 1

DWG NO. 125884
SHEET 1
REV. C