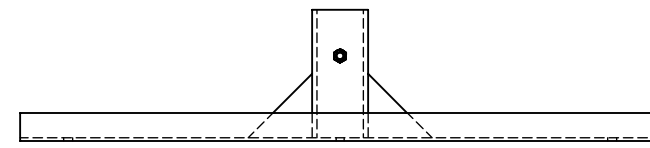
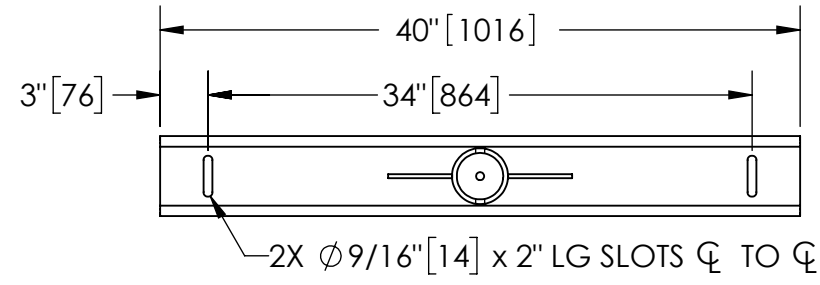


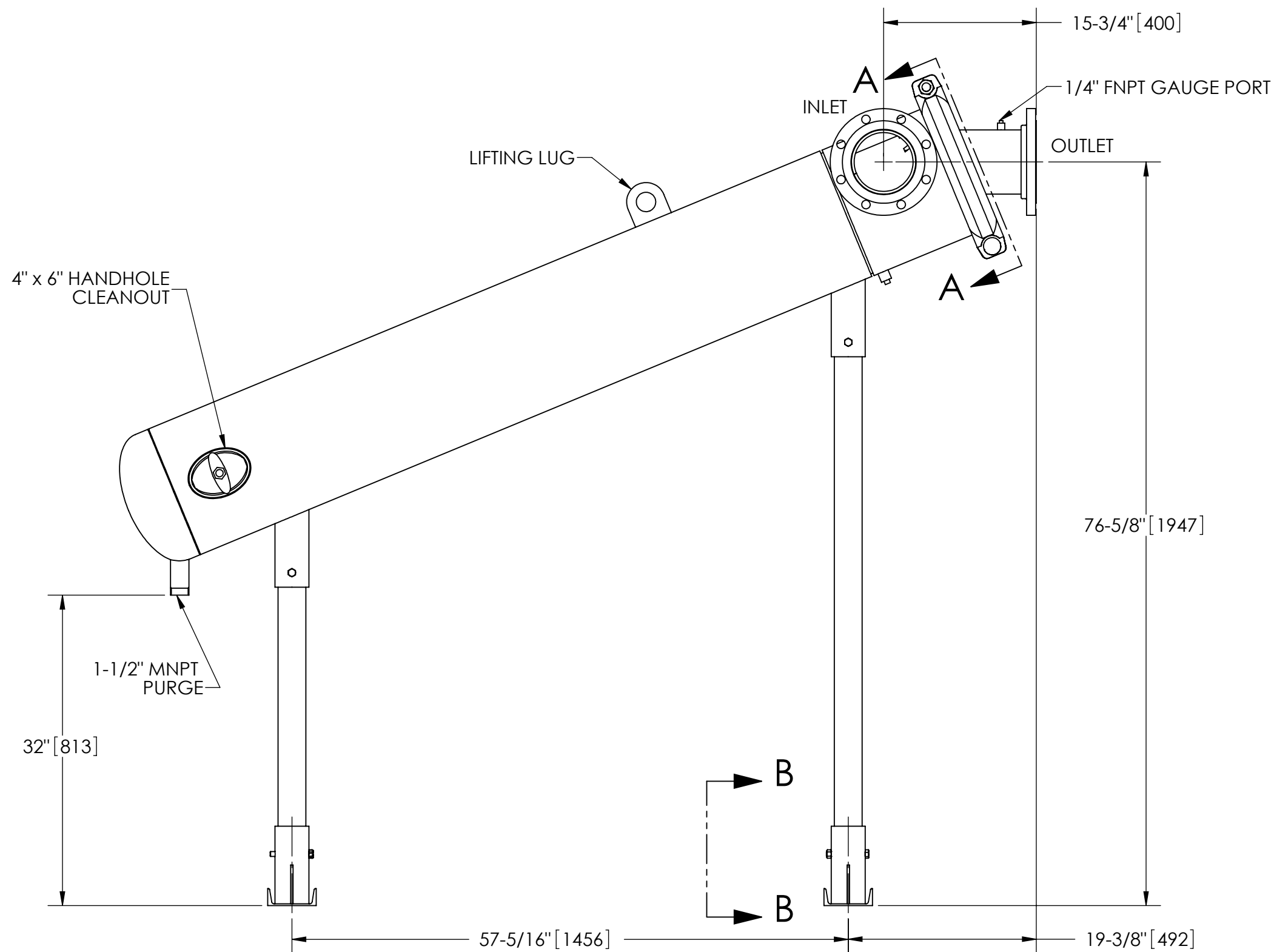
EXCEPT AS OTHERWISE PROVIDED BY CONTRACT, THIS DRAWING AND SPECIFICATIONS SHALL NOT BE REPRODUCED, COPIED OR USED AS THE BASIS FOR MANUFACTURE OR SALE OF MATTER DEPICTED HEREIN WITHOUT THE EXPRESSED WRITTEN PERMISSION OF THE LAKOS CORPORATION, OR ITS ASSIGNEES.

NOTES:

1. INLET & OUTLET FLANGES ARE 6" 150# RF PER ANSI B16.5 REQUIRING 8X Ø3/4" BOLTS (BOLTS AND GASKETS NOT INCLUDED).
2. MAXIMUM PRESSURE: 150 psi (10.3 bar).
3. MAXIMUM TEMPERATURE: 180°F (82.2°C).
4. PRESSURE LOSS: 3-12 psid (.2-.8 bar) AT RATED FLOW.
5. RATED FLOW: 450-825 gpm (102-187 m³/hr).
6. APPROXIMATE DRY WEIGHT: 770 lbs (350 kg).
7. FINISH: LAKOS BLUE (EXTERIOR ONLY).

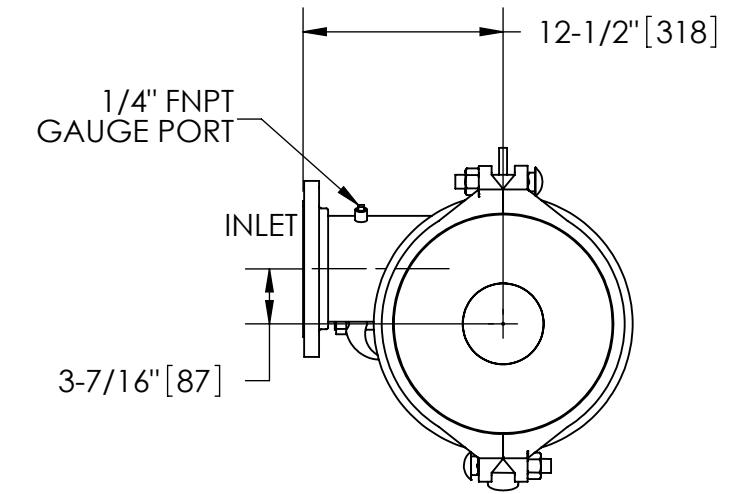


SECTION B-B

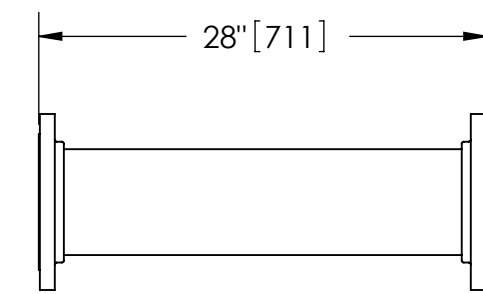


REVISION HISTORY				
ZONE	REV	DESCRIPTION	DATE	APPROVED
	E	UPDATE TO CURRENT STANDARDS	11/15/21	AMF
367	F	REPLACED 106355 WITH 111075	6/9/2022	YL
	G	CHANGED VORT TUBE TO INTERNAL ASSEMBLY	4/26/2023	AJW

THIS DRAWING HAS BEEN GENERATED AND IS MAINTAINED BY A CAD SYSTEM. CHANGES SHALL ONLY BE INCORPORATED AS DIRECTED BY AN APPROVED ENGINEERING CHANGE ORDER (ECO). PAPER COPIES ARE UNCONTROLLED.



SECTION A-A



FLANGED SPOOL
MODEL FS-06 (AVAILABLE SEPARATELY)
REQUIRED FOR REMOVAL OF TOP ASSEMBLY

SUBMITTAL DRAWING

This drawing is submitted for spatial consideration only. Do not pre-plumb to these dimensions.

UNLESS OTHERWISE SPECIFIED: DIMENSIONS ARE IN: INCHES (mm) TOLERANCES ARE: FRACTIONS DECIMALS ANGLES ± 1/4" .XX ± .01 ± 1/4° XXX ± .005 XXXX ± .0005		ENGINEERED FOR: FLANGED			
DO NOT SCALE DRAWING		APPROVALS	DATE	TITLE	
MATERIAL CLASS P-1 MILD CARBON STEEL		DRAWN DLW	4/3/06	JPX-0450-L/FLG, SEPARATOR, 450-825 gpm, CARBON STEEL	
FINISH LAKOS BLUE		ENGR DLW	4/3/06	SIZE C	MODEL NO.
		MFG -	-	DWG NO. 119181	REV. G
		WORK ORDER	QTY.	SCALE 1:12	EST. WT. 760 lb SHEET 1 OF 1

DWG NO.

119181

SHT

1 REV. G

A