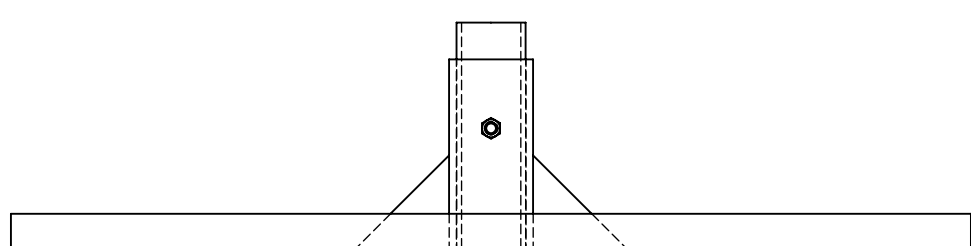
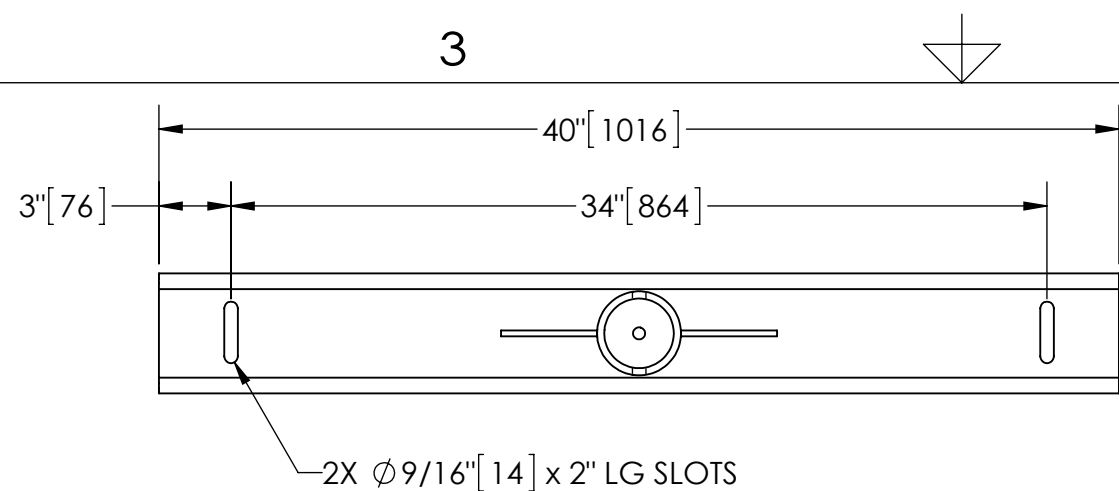


EXCEPT AS OTHERWISE PROVIDED BY CONTRACT, THIS DRAWING AND SPECIFICATIONS SHALL NOT BE REPRODUCED, COPIED OR USED AS THE BASIS FOR MANUFACTURE OR SALE OF MATTER DEPICTED HEREIN WITHOUT THE EXPRESSED WRITTEN PERMISSION OF THE CLAUDE LAVAL CORPORATION, OR ITS ASSIGNEES.

NOTES:

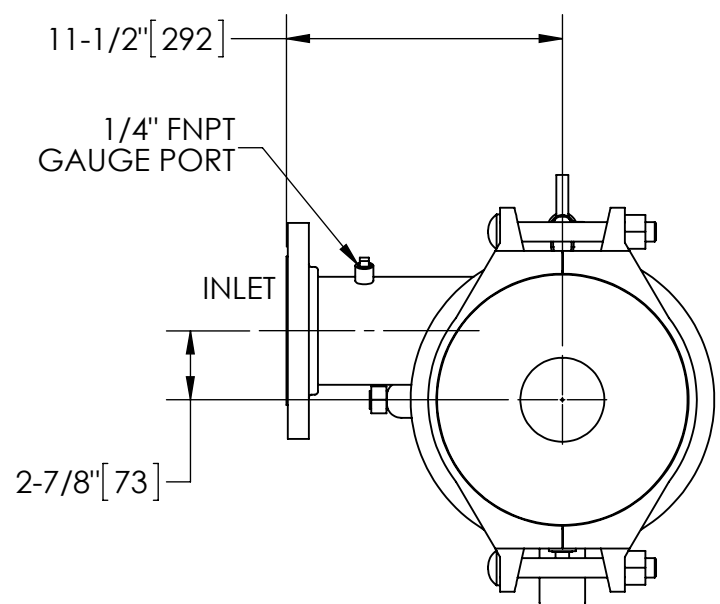
1. INLET & OUTLET FLANGES ARE 4" 150# RF PER ANSI B16.5 REQUIRING 8X  $\phi$ 5/8" BOLTS (BOLTS AND GASKETS NOT INCLUDED).
2. MAXIMUM PRESSURE: 150 psi (10.3 bar).
3. MAXIMUM TEMPERATURE: 180°F (82.2°C).
4. PRESSURE LOSS: 3-12 psid (.2-8 bar) AT RATED FLOW.
5. RATED FLOW: 200-325 gpm (45-74 m<sup>3</sup>/hr).
6. APPROXIMATE DRY WEIGHT: 469 lbs (213 kg).
7. FINISH: LAKOS BLUE (EXTERIOR ONLY).



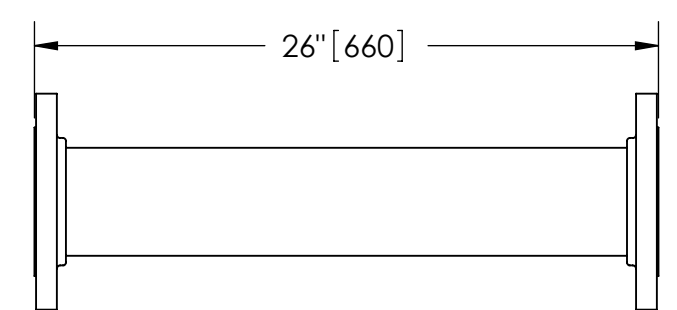
SECTION B-B

REVISION HISTORY				
ZONE	REV	DESCRIPTION	DATE	APPROVED

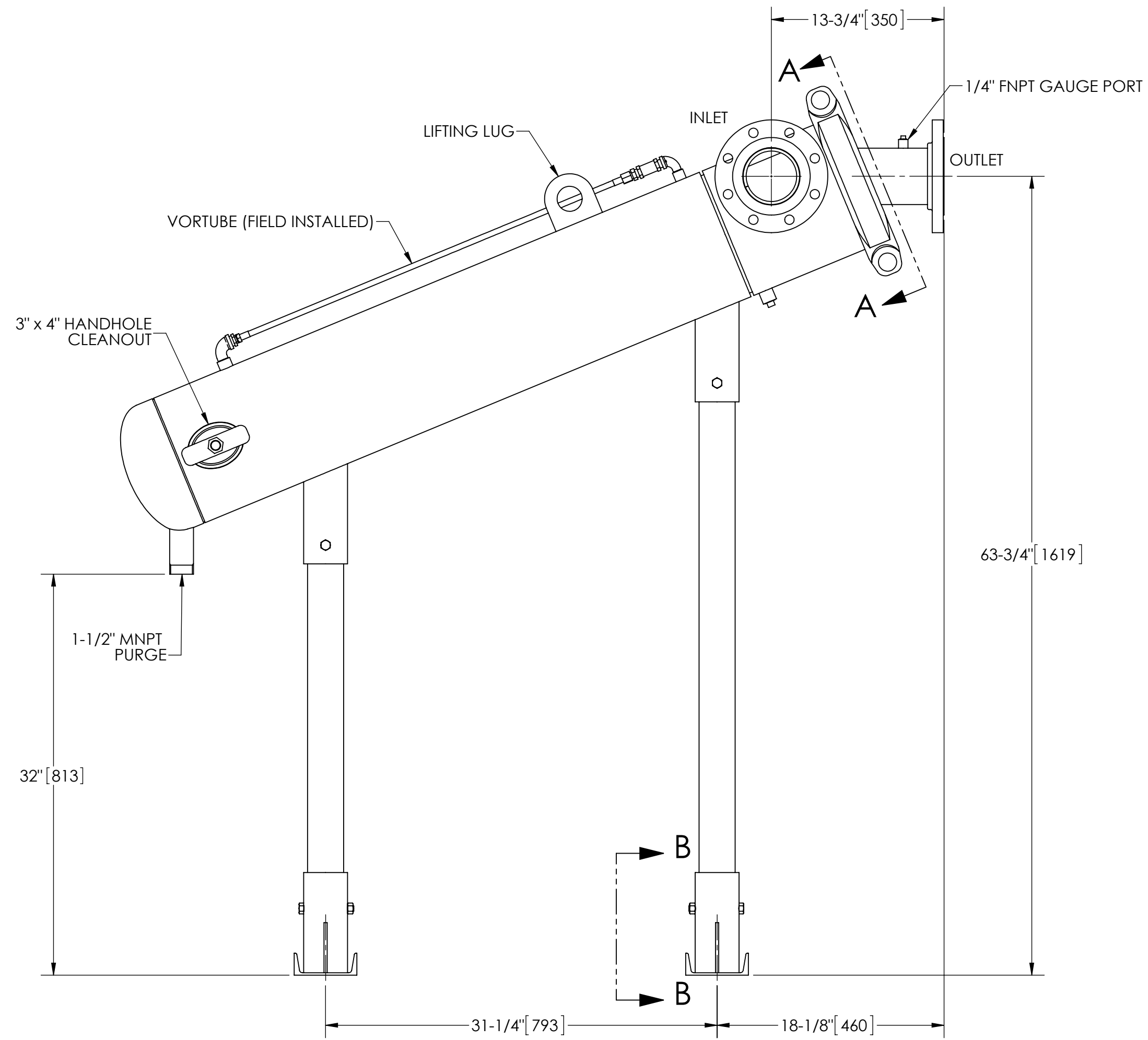
THIS DRAWING HAS BEEN GENERATED AND IS MAINTAINED BY A CAD SYSTEM. CHANGES SHALL ONLY BE INCORPORATED AS DIRECTED BY AN APPROVED ENGINEERING CHANGE ORDER (ECO). PAPER COPIES ARE UNCONTROLLED.



SECTION A-A



FLANGED SPOOL  
MODEL FS-04 (AVAILABLE SEPARATELY)  
REQUIRED FOR REMOVAL OF TOP ASSEMBLY



SUBMITTAL DRAWING

This drawing is submitted for spatial consideration only. Do not pre-plumb to these dimensions.

UNLESS OTHERWISE SPECIFIED: DIMENSIONS ARE IN: INCHES [mm] TOLERANCES ARE: FRACTIONS DECIMALS ANGLES $\pm$ 1/4" .XX $\pm$ .01 $\pm$ 1/4° XXX $\pm$ .005 XXXX $\pm$ .0005		ENGINEERED FOR: FLANGED		LAKOS		CLAUDE LAVAL CORP. FRESNO, CALIFORNIA 93727 WWW.LAKOS.COM	
DO NOT SCALE DRAWING		APPROVALS	DATE	TITLE			
MATERIAL CLASS P-1 MILD CARBON STEEL		DRAWN DLW	4/3/06	JPX-0200-L/FLG, SEPARATOR, 200-325 gpm, CARBON STEEL			
FINISH LAKOS BLUE		ENGR DLW	4/3/06	SIZE C	MODEL NO.	DWG NO. 119620	REV. E
		WORK ORDER	QTY.	SCALE 1:8	EST. WT. 469 lb	SHEET 1 OF 1	