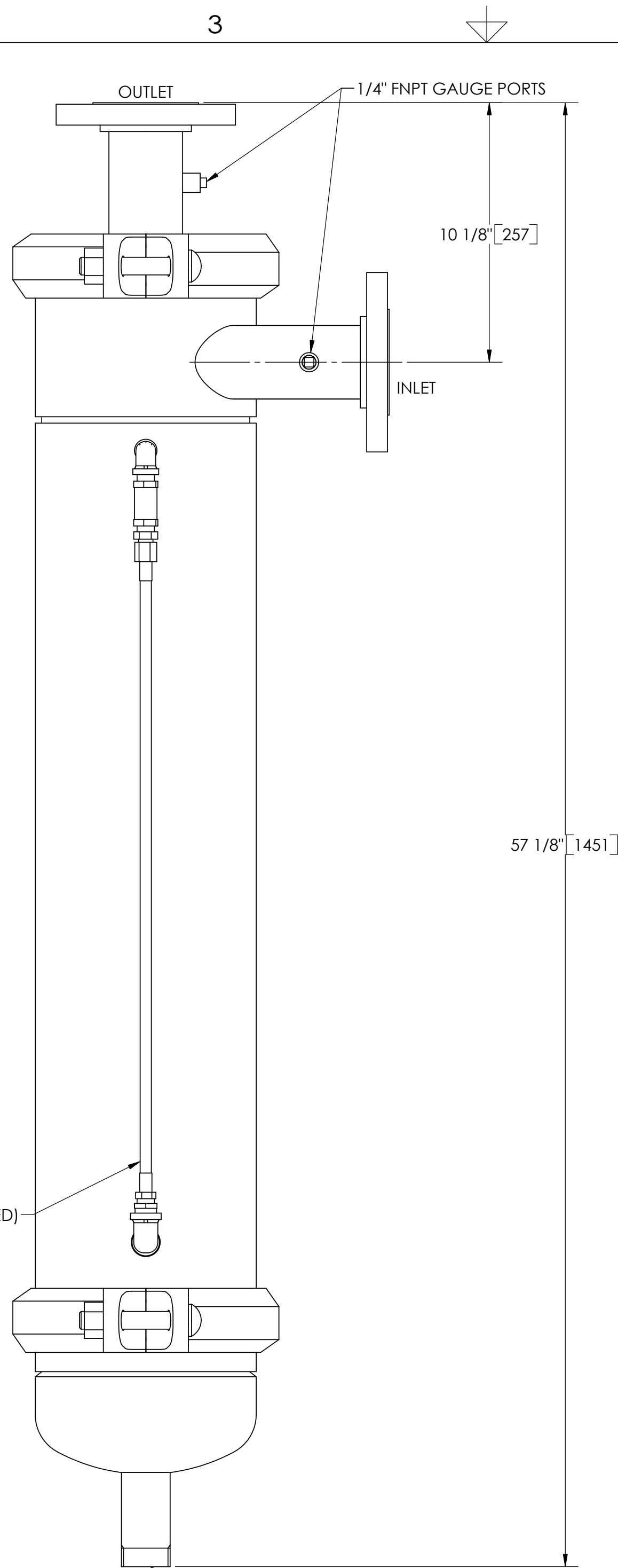


EXCEPT AS OTHERWISE PROVIDED BY CONTRACT, THIS DRAWING AND SPECIFICATIONS SHALL NOT BE REPRODUCED, COPIED OR USED AS THE BASIS FOR MANUFACTURE OR SALE OF MATTER DEPICTED HEREIN WITHOUT THE EXPRESSED WRITTEN PERMISSION OF THE CLAUDE LAVAL CORPORATION, OR ITS ASSIGNEES.

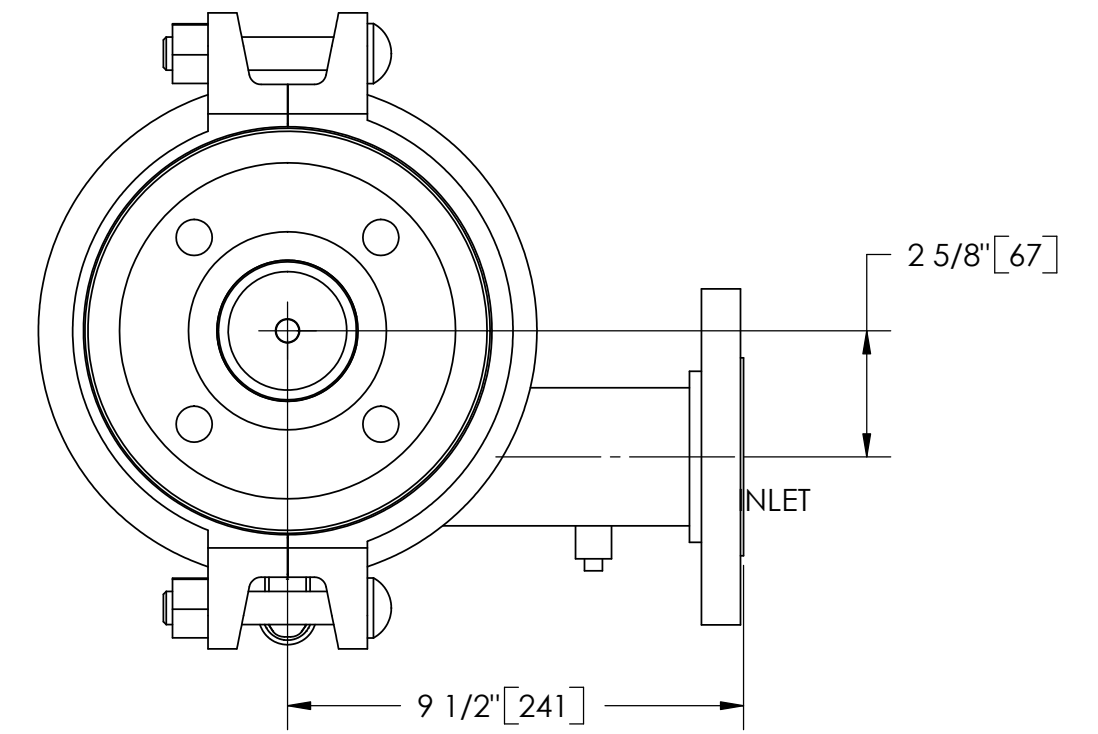
NOTES:

1. INLET & OUTLET FLANGES ARE 2-1/2" 150# RF PER ANSI B16.5 REQUIRING 4X ϕ 5/8" BOLTS (BOLTS AND GASKETS NOT INCLUDED).
2. MAXIMUM PRESSURE: 150 psi (10.3 bar).
3. MAXIMUM TEMPERATURE: 180°F (82.2°C).
4. PRESSURE LOSS: 3-12 psid (.2-.8 bar) AT RATED FLOW.
5. RATED FLOW: 85-145 gpm (19-33 m³/hr).
6. APPROXIMATE DRY WEIGHT: 244 lbs (111 kg).
7. FINISH: LAKOS BLUE (EXTERIOR ONLY).

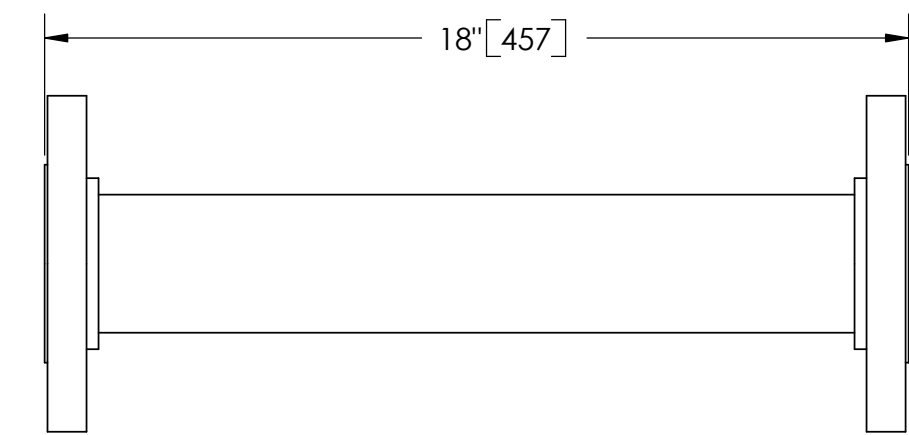


REVISION HISTORY				
ZONE	REV	DESCRIPTION	DATE	APPROVED

THIS DRAWING HAS BEEN GENERATED AND IS MAINTAINED BY A CAD SYSTEM. CHANGES SHALL ONLY BE INCORPORATED AS DIRECTED BY AN APPROVED ENGINEERING CHANGE ORDER (ECO). PAPER COPIES ARE UNCONTROLLED.



TOP VIEW



FLANGED SPOOL
MODEL FS-025 (AVAILABLE SEPARATELY)
REQUIRED FOR REMOVAL OF TOP ASSEMBLY

SUBMITTAL DRAWING

This drawing is submitted for spatial consideration only. Do not pre-plumb to these dimensions.

UNLESS OTHERWISE SPECIFIED: DIMENSIONS ARE IN: INCHES [mm] TOLERANCES ARE: FRACTIONS ± 1/4" DECIMALS .XX ± .01 XXX ± .005 XXXX ± .0005 ANGLES ± 1/4°	ENGINEERED FOR: FLANGED		LAKOS CLAUDE LAVAL CORP. FRESNO, CALIFORNIA 93727 WWW.LAKOS.COM		LAVAL UNDERGROUND SURVEYS
	APPROVALS	DATE	TITLE JPX-0085/FLG, SEPARATOR, 85-145 gpm, CARBON STEEL		
DO NOT SCALE DRAWING	DRAWN DLW	4/3/06	SIZE C		REV. A
MATERIAL CLASS P-1 MILD CARBON STEEL	ENGR DLW	4/3/06	MODEL NO.	DWG NO. 119780	
FINISH LAKOS BLUE	MFG -	-	SCALE 1:4	EST. WT. 244 lb	SHEET 1 OF 1
	WORK ORDER	QTY.			

DWG. NO. 119780
SHEET 1
REV. A