

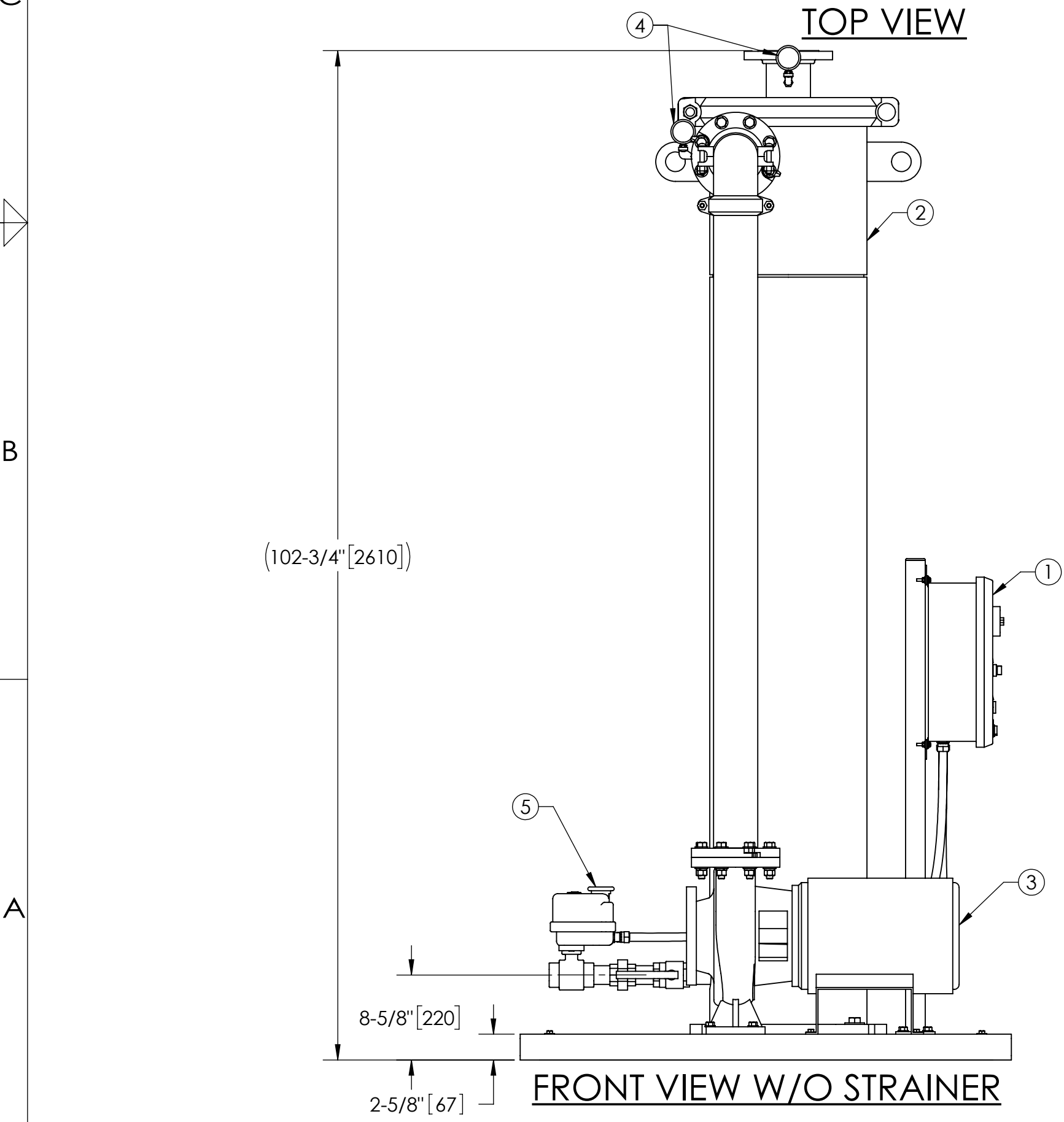
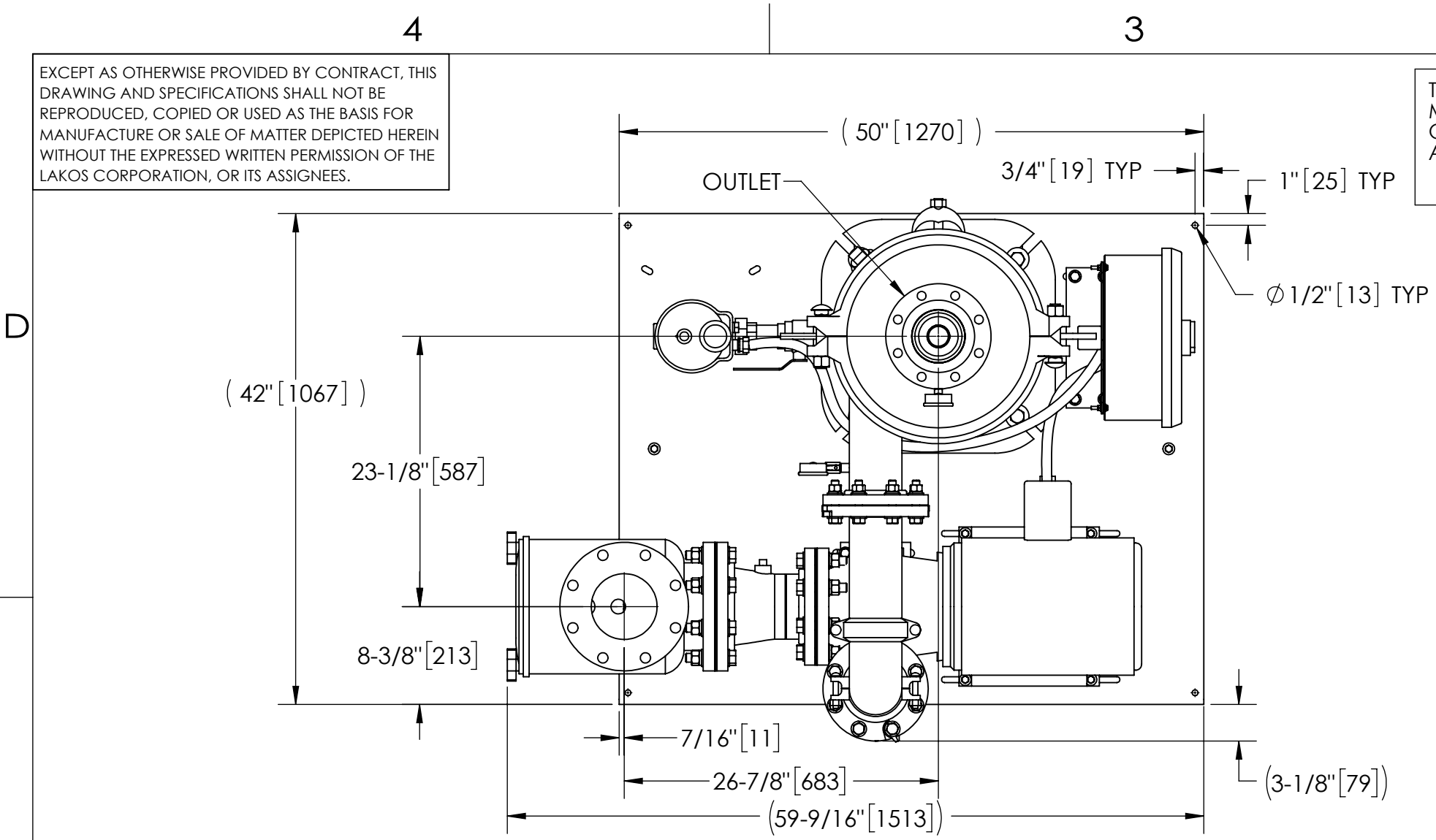
EXCEPT AS OTHERWISE PROVIDED BY CONTRACT, THIS DRAWING AND SPECIFICATIONS SHALL NOT BE REPRODUCED, COPIED OR USED AS THE BASIS FOR MANUFACTURE OR SALE OF MATTER DEPICTED HEREIN WITHOUT THE EXPRESSED WRITTEN PERMISSION OF THE LAKOS CORPORATION, OR ITS ASSIGNEES.

THIS DRAWING HAS BEEN GENERATED AND IS MAINTAINED BY A CAD SYSTEM. CHANGES SHALL ONLY BE INCORPORATED AS DIRECTED BY AN APPROVED ENGINEERING CHANGE ORDER (ECO). PAPER COPIES ARE UNCONTROLLED.

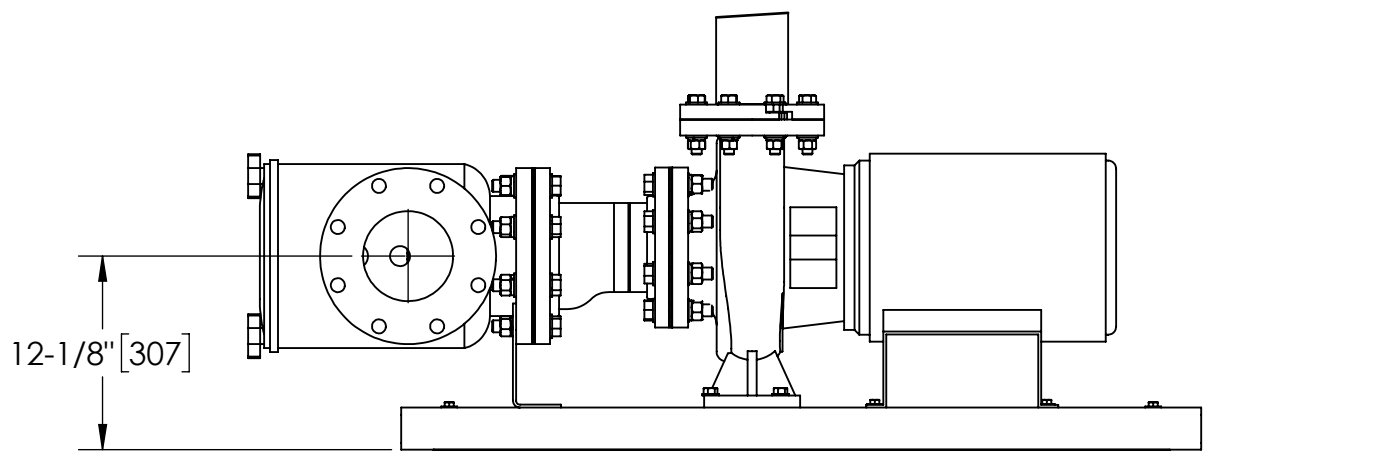
ZONE		REV	DESCRIPTION	DATE	APPROVED
		01	RELEASED FOR SUBMITTAL	2/26/21	TPF

- NOTES:**
1. INLET IS 6" PIPE (125# ANSI FLANGED).
 2. OUTLET IS 4" PIPE (150# ANSI FLANGED).
 3. PURGE OUTLET IS 1-1/2" PIPE.
 4. MAXIMUM PRESSURE: 150 psi (10.3 bar).
 5. MAXIMUM FLUID OPERATING TEMPERATURE: 100°F (37.8°C).
 6. SPECIFIED FLOW RATE: 610 gpm (139 m³/hr).
 7. FINISH: AS ASSEMBLED.
 8. POWER REQUIREMENT: 3/60/460V.
 9. NEMA 4X MOTOR STARTER ENCLOSURE WITH SAFETY DISCONNECT AND H.O.A. SWITCH.
 10. APPROXIMATE DRY WEIGHT: 1757 lbs. (797 kg).
 11. INLET/OUTLET VALVE KIT RECOMMENDED: SEE FACTORY.
 12. MINIMUM SUCTION LINE TO JC SYSTEM IS 6" PIPE.
 13. FLOODED SUCTION REQUIRED.

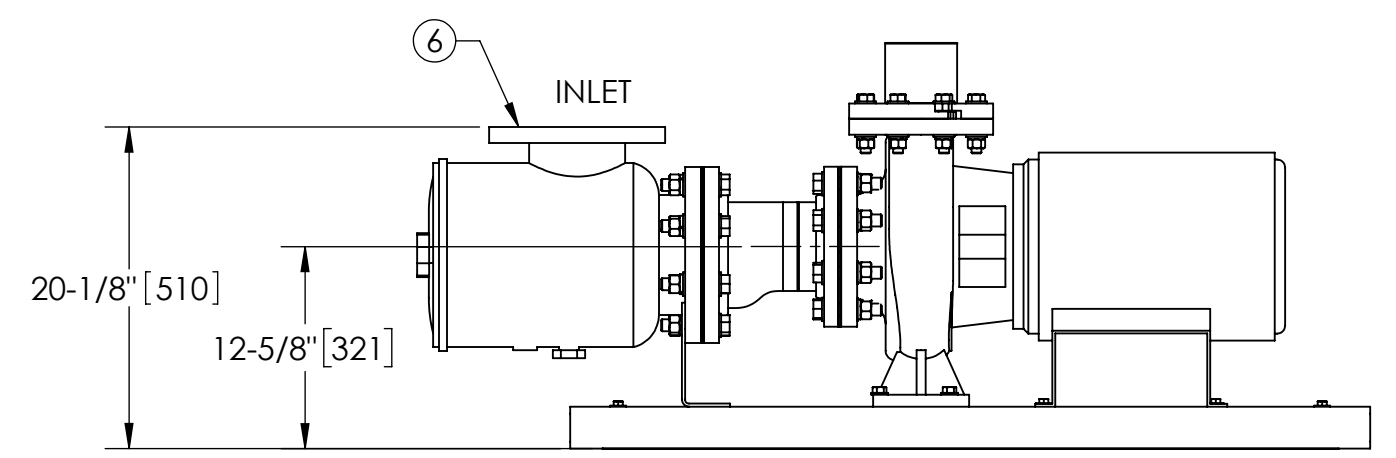
- COMPONENT LIST:**
- ① ELECTRICAL CONTROL BOX 3/60/460V W/120V TRANSFORMER.
 - ② SEPARATOR: eJPX-0350-V.
 - ③ PUMP: 10 HP CENTRIFUGAL, 1800 rpm, 3/60/460V.
 - ④ INLET/OUTLET PRESSURE GAUGES: 0-160 psi, GLYCERIN-FILLED.
 - ⑤ PURGE EQUIPMENT: EFS-15-120V.
 - ⑥ STRAINER, SUCTION DIFFUSER.



SUBMITTAL DRAWING
 This drawing is submitted for spatial consideration only. Do not pre-plumb to these dimensions.



FRONT VIEW ROTATED STRAINER (OPTIONAL)



FRONT VIEW PUMP & STRAINER

UNLESS OTHERWISE SPECIFIED: DIMENSIONS ARE IN: INCHES [mm] TOLERANCES ARE: FRACTIONS DECIMALS ANGLES ± 1" .XX ± .01 ± 1/4" .XXX ± .005 .XXXX ± .0005		ENGINEERED FOR: STANDARD			
DO NOT SCALE DRAWING	APPROVALS	DATE	TITLE		
MATERIAL PER LAKOS SPEC	DRAWN TPF	2/26/21	eJBX-0610-EFS, JC SYSTEM		
FINISH AS ASSEMBLED	ENGR -	-	HI EFF SIDESTRM eJPX-0350, 3/60/460V		
	REVIEW -	-	SIZE C	MODEL NO.	DWG NO. 185152
	WORK ORDER	QTY.	SCALE 1:12	EST. WT. 1757 lbs.	SHEET 1 OF 1

DWG NO. 185152
 SH 1
 REV 01