

EXCEPT AS OTHERWISE PROVIDED BY CONTRACT, THIS DRAWING AND SPECIFICATIONS SHALL NOT BE REPRODUCED, COPIED OR USED AS THE BASIS FOR MANUFACTURE OR SALE OF MATTER DEPICTED HEREIN WITHOUT THE EXPRESSED WRITTEN PERMISSION OF THE LAKOS CORPORATION, OR ITS ASSIGNEES.

THIS DRAWING HAS BEEN GENERATED AND IS MAINTAINED BY A CAD SYSTEM. CHANGES SHALL ONLY BE INCORPORATED AS DIRECTED BY AN APPROVED ENGINEERING CHANGE ORDER (ECO). PAPER COPIES ARE UNCONTROLLED.

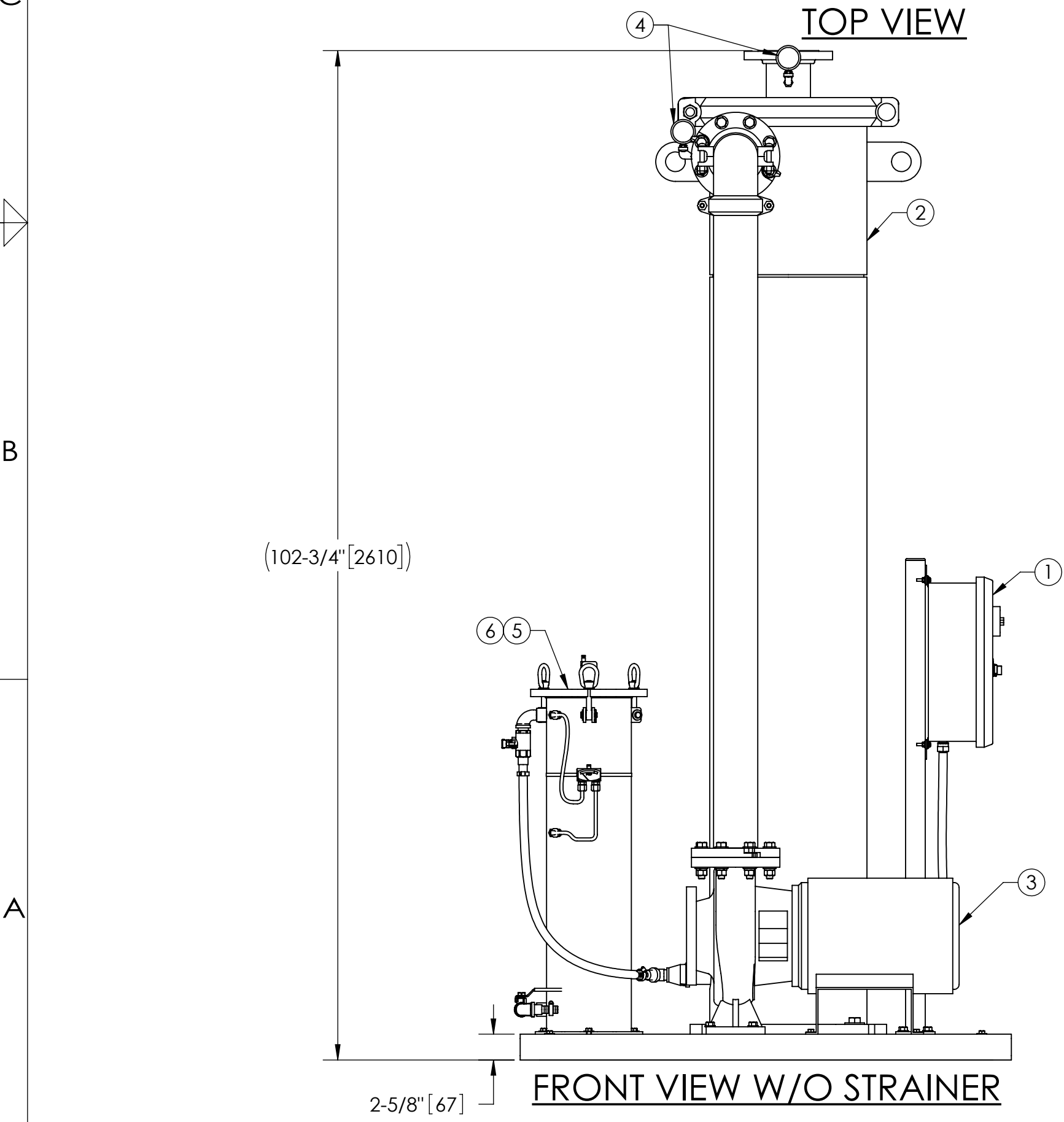
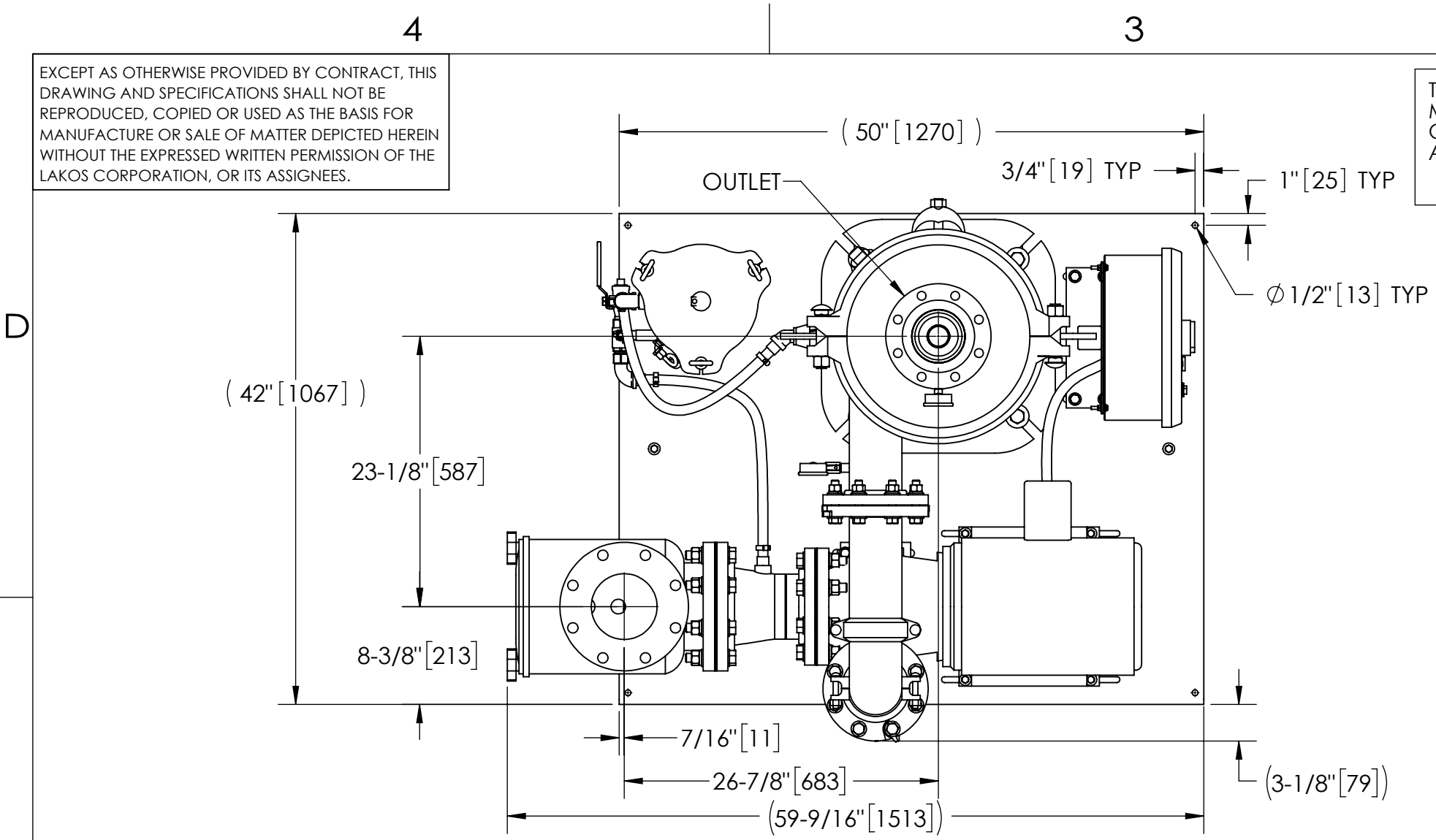
REVISION HISTORY			
ZONE	REV	DESCRIPTION	DATE
	01	RELEASED FOR SUBMITTAL	4/16/21
			APPROVED
			TPF

NOTES:

1. INLET IS 6" PIPE (125# ANSI FLANGED).
2. OUTLET IS 4" PIPE (150# ANSI FLANGED).
3. PURGE OUTLET IS 1-1/2" PIPE.
4. MAXIMUM PRESSURE: 150 psi (10.3 bar).
5. MAXIMUM FLUID OPERATING TEMPERATURE: 100°F (37.8°C).
6. SPECIFIED FLOW RATE: 610 gpm (139 m³/hr).
7. FINISH: AS ASSEMBLED.
8. POWER REQUIREMENT: 3/60/460V.
9. NEMA 4X MOTOR STARTER ENCLOSURE WITH SAFETY DISCONNECT AND H.O.A. SWITCH.
10. APPROXIMATE DRY WEIGHT: 1802 lbs. (817 kg).
11. INLET/OUTLET VALVE KIT RECOMMENDED: SEE FACTORY.
12. MINIMUM SUCTION LINE TO JC SYSTEM IS 6" PIPE.
13. FLOODED SUCTION REQUIRED.

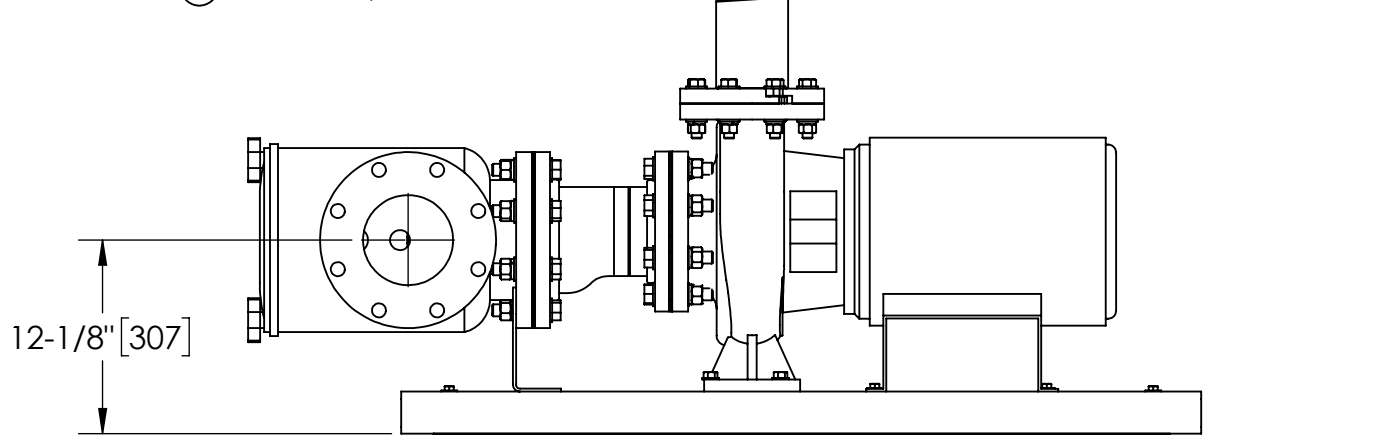
COMPONENT LIST:

- 1 ELECTRICAL CONTROL BOX 3/60/460V W/120V TRANSFORMER.
- 2 SEPARATOR: eJPX-0350-V.
- 3 PUMP: 10 HP CENTRIFUGAL, 1800 rpm, 3/60/460V.
- 4 INLET/OUTLET PRESSURE GAUGES: 0-160 psi, GLYCERIN-FILLED.
- 5 PURGE EQUIPMENT: SRV-833.
- 6 DIFFERENTIAL PRESSURE INDICATOR: (AVAILABLE WITH DRY ELECTRICAL CONTACT - MODEL DHE-15-S. ORDER SEPARATELY).
- 7 STRAINER, SUCTION DIFFUSER.

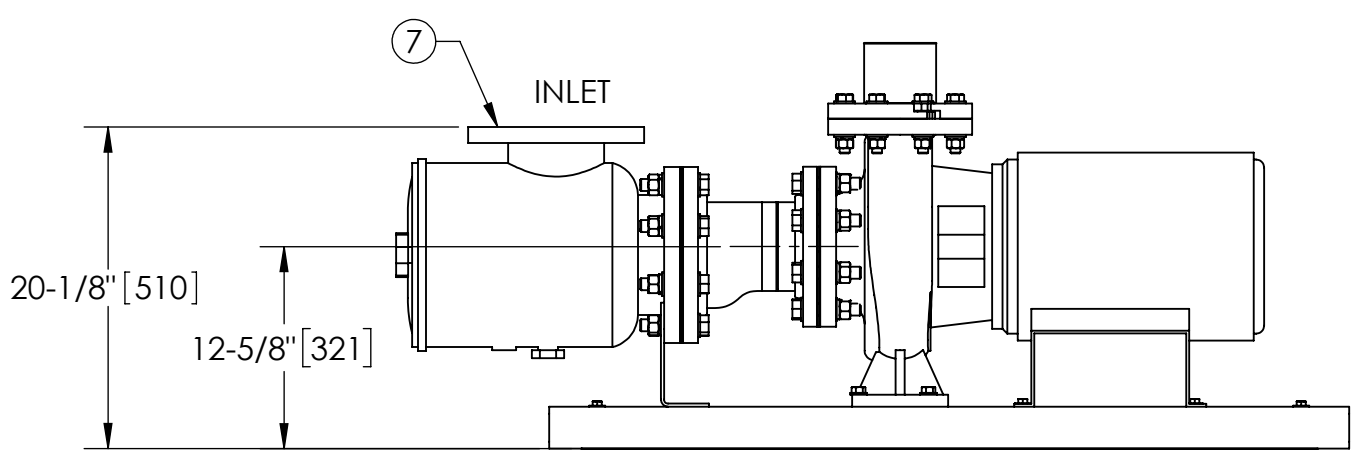


SUBMITTAL DRAWING

This drawing is submitted for spatial consideration only. Do not pre-plumb to these dimensions.



FRONT VIEW ROTATED STRAINER (OPTIONAL)



FRONT VIEW PUMP & STRAINER

UNLESS OTHERWISE SPECIFIED: DIMENSIONS ARE IN: INCHES [mm] TOLERANCES ARE: FRACTIONS DECIMALS ANGLES $\pm 1"$.XX $\pm .01$ $\pm 1/4"$.XXX $\pm .005$.XXXX $\pm .0005$	ENGINEERED FOR:		FRESNO, CALIFORNIA WWW.LAKOS.COM	
	STANDARD			
	DO NOT SCALE DRAWING	APPROVALS	DATE	TITLE
	MATERIAL PER LAKOS SPEC	DRAWN TPF	4/16/21	eJBX-0610-SRV, JC SYSTEM HI EFF SIDESTRM eJPX-0350, 3/60/460V
FINISH AS ASSEMBLED	ENGR -	-	SIZE MODEL NO. DWG NO. 185245	
	REVIEW -	-	SCALE 1:12 EST. WT. 1802 lbs. SHEET 1 OF 1	
	WORK ORDER	QTY.		

DWG NO. 185245
 SHEET 1
 REV. 01