

EXCEPT AS OTHERWISE PROVIDED BY CONTRACT, THIS DRAWING AND SPECIFICATIONS SHALL NOT BE REPRODUCED, COPIED OR USED AS THE BASIS FOR MANUFACTURE OR SALE OF MATTER DEPICTED HEREIN WITHOUT THE EXPRESSED WRITTEN PERMISSION OF THE LAKOS CORPORATION, OR ITS ASSIGNEES.

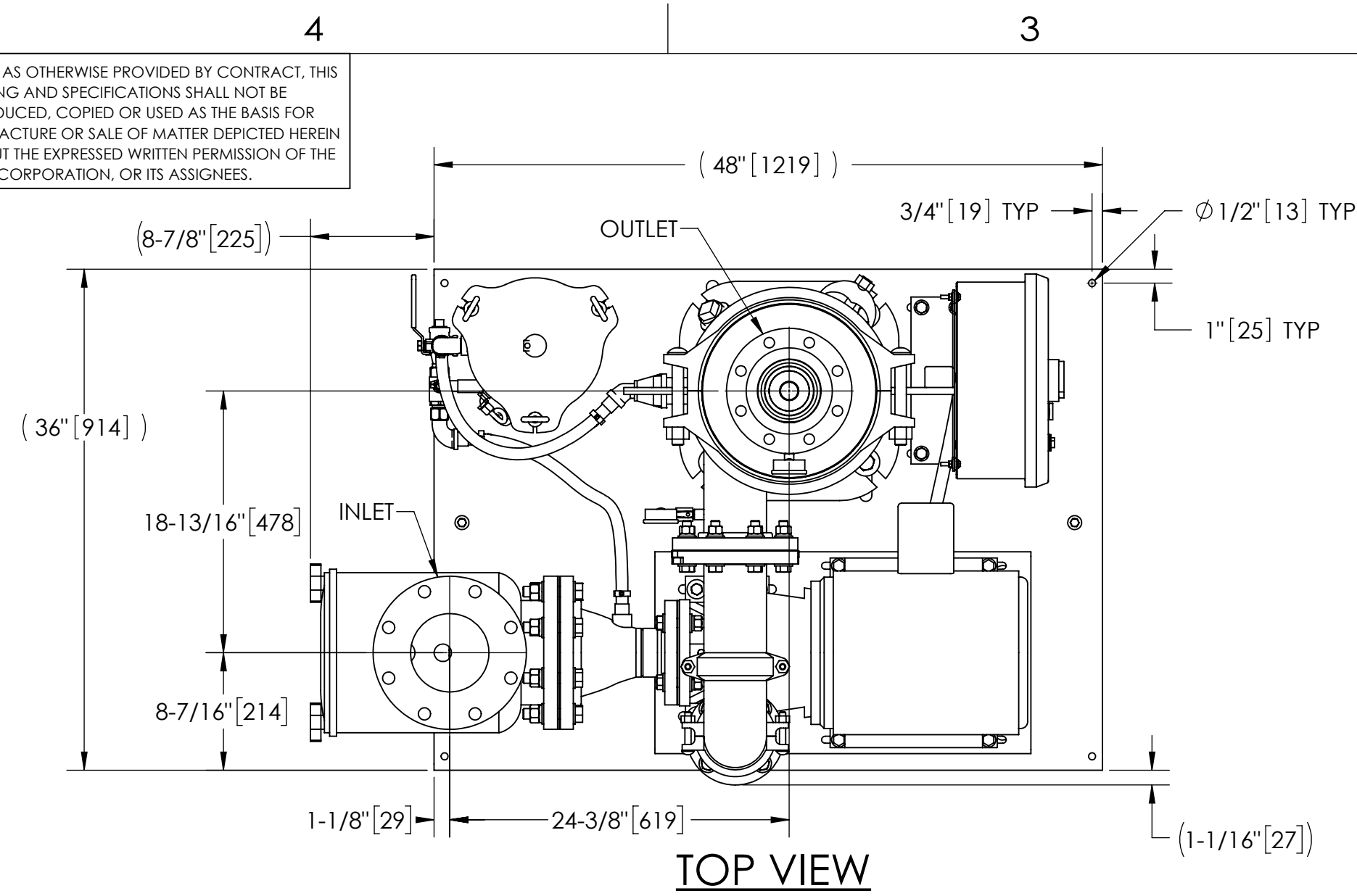
REVISION HISTORY				
ZONE	REV	DESCRIPTION	DATE	APPROVED
	01	RELEASED FOR SUBMITTAL	4/16/21	TPF

**NOTES:**

- INLET IS 6" PIPE (125# ANSI FLANGED).
- OUTLET IS 4" PIPE (150# ANSI FLANGED).
- PURGE OUTLET IS 1-1/2" PIPE.
- MAXIMUM PRESSURE: 150 psi (10.3 bar).
- MAXIMUM TEMPERATURE: 100°F (37.8°C).
- SPECIFIED FLOWRATES:  
BASIN SWEEPING - 310 gpm (70 m³/hr).  
SIDE STREM & CLOSED LOOP - 350 gpm (80 m³/hr).
- FINISH: AS ASSEMBLED.
- POWER REQUIREMENT: 3/60/460V.
- NEMA 4X MOTOR STARTER ENCLOSURE WITH SAFETY DISCONNECT AND H.O.A. SWITCH.
- APPROXIMATE DRY WEIGHT: 1367 lbs (620 kg).
- INLET/OUTLET VALVE KIT RECOMMENDED: SEE FACTORY.
- MINIMUM PIPE FROM TOWER BASIN TO TC SYSTEM IS 6" PIPE.
- FLOODED SUCTION REQUIRED.

**COMPONENT LIST:**

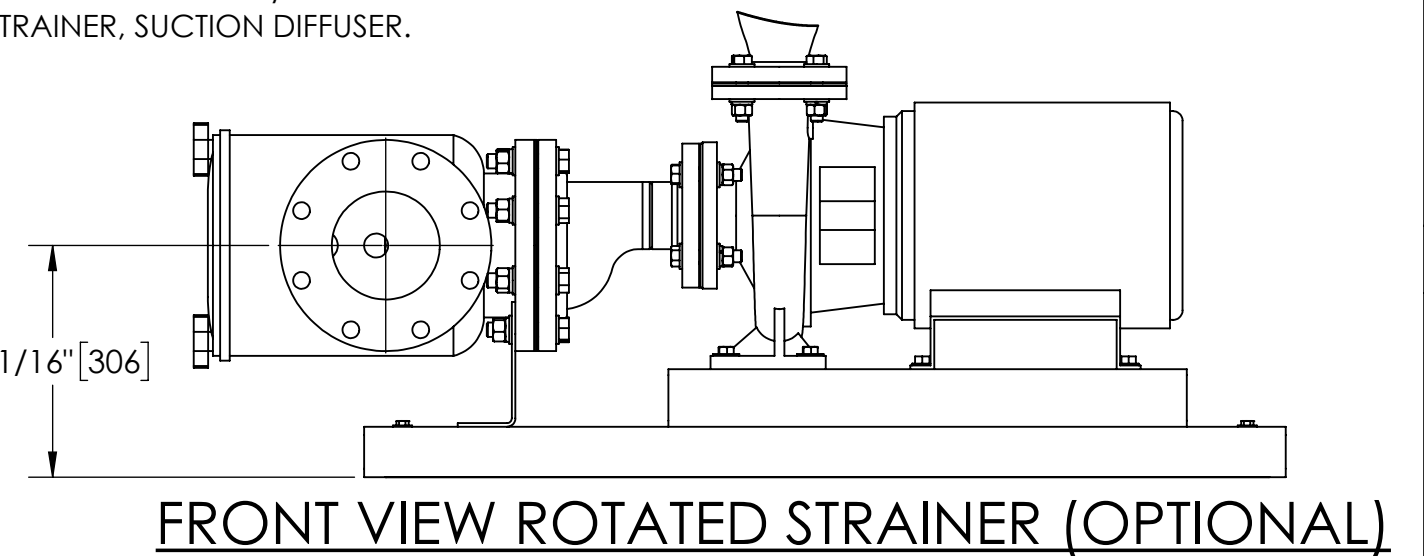
- ELECTRICAL CONTROL BOX 3/60/460V/120V TRANSFORMER.
- SEPARATOR: eJPX-0195-V.
- PUMP: 7.5 HP CENTRIFUGAL, 1800 rpm, 3/60/460V.
- INLET/OUTLET PRESSURE GAUGES: 0-160 psi, GLYCERIN-FILLED.
- PURGE EQUIPMENT: SRV-833.
- DIFFERENTIAL PRESSURE INDICATOR:  
(AVAILABLE WITH DRY ELECTRICAL CONTACT - MODEL DHE-15-S.  
ORDER SEPARATELY).
- STRAINER, SUCTION DIFFUSER.



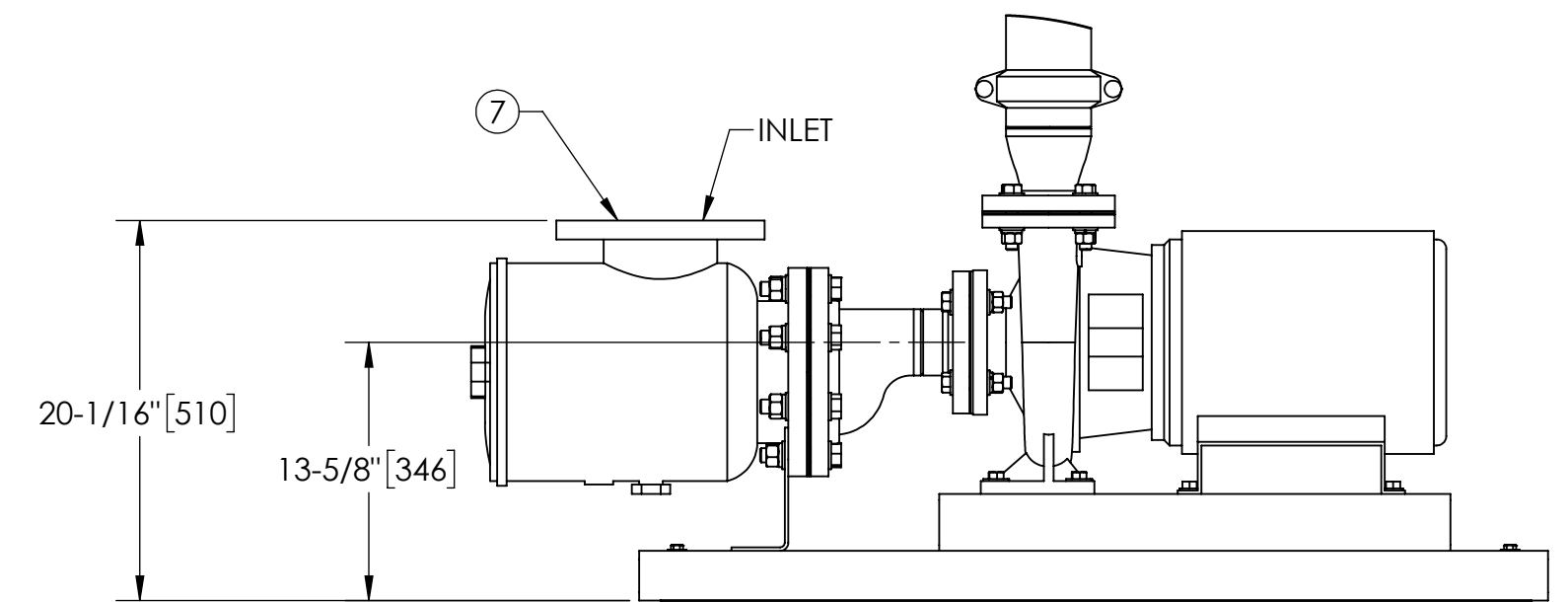
**TOP VIEW**

**SUBMITTAL DRAWING**

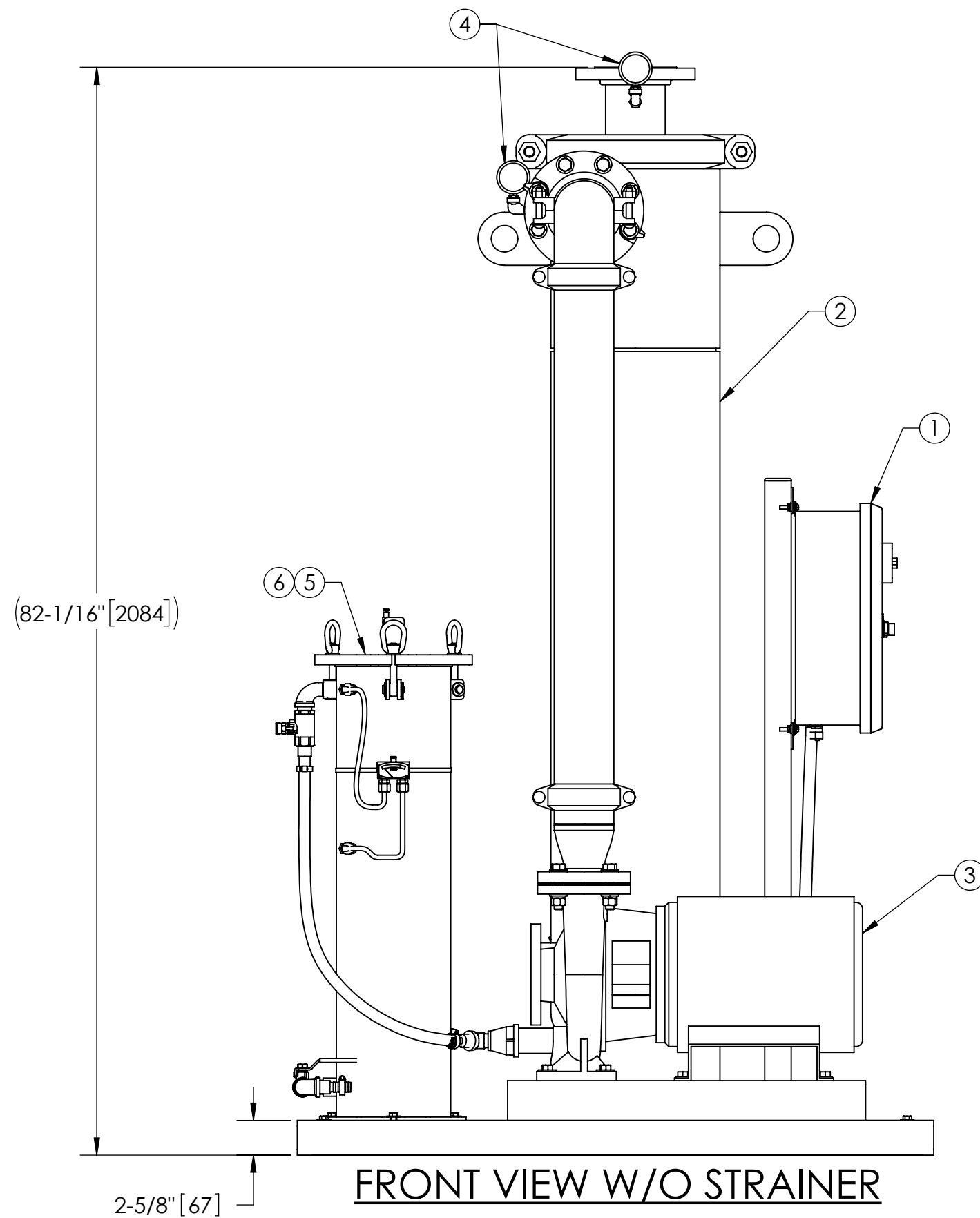
This drawing is submitted for spatial consideration only. Do not pre-plumb to these dimensions.



**FRONT VIEW ROTATED STRAINER (OPTIONAL)**



**FRONT VIEW PUMP & STRAINER**



**FRONT VIEW W/O STRAINER**

THIS DRAWING HAS BEEN GENERATED AND IS MAINTAINED BY A CAD SYSTEM. CHANGES SHALL ONLY BE INCORPORATED AS DIRECTED BY AN APPROVED ENGINEERING CHANGE ORDER (ECO). PAPER COPIES ARE UNCONTROLLED.

UNLESS OTHERWISE SPECIFIED: DIMENSIONS ARE IN: INCHES (mm) TOLERANCES ARE: FRACTIONS    DECIMALS    ANGLES ± 1"            .XX ± .01            ± 1/4° .XXX ± .005            .XXXX ± .0005		ENGINEERED FOR: <b>STANDARD</b>			
DO NOT SCALE DRAWING	APPROVALS	DATE	TITLE		
MATERIAL	DRAWN	4/16/21	eJCX-0310-SRV, JC SYSTEM		
FINISH	ENGR	-	HI EFF SWEEPER eJPX-0195, 3/60/460V		
AS ASSEMBLED	REVIEW	-	SIZE	MODEL NO.	DWG NO.
	WORK ORDER	QTY.	C		185240
			SCALE	EST. WT.	SHEET
			1:10	1367 lb	1 OF 1

DWG. NO. 185240 SHEET 1 REV. 01