

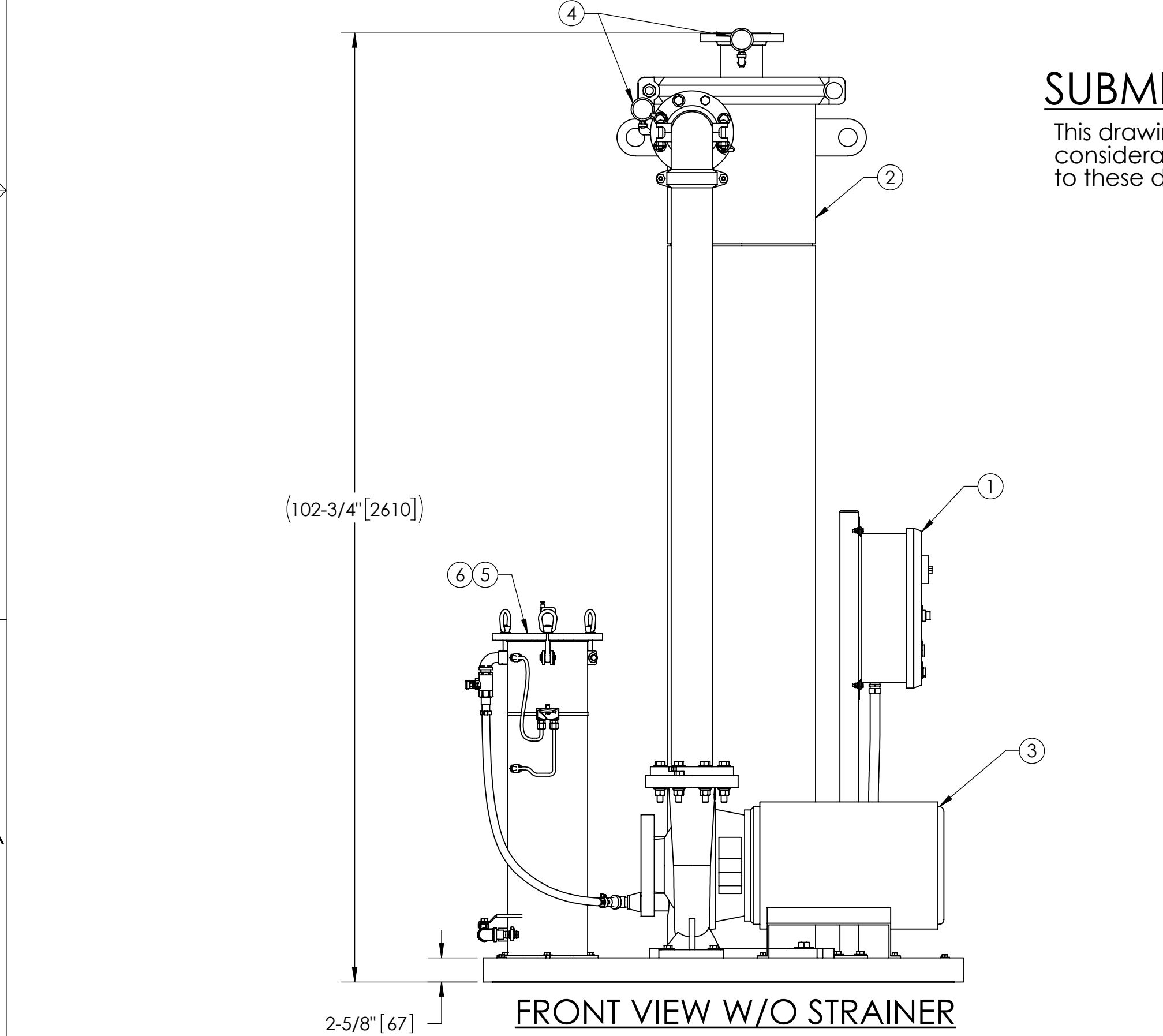
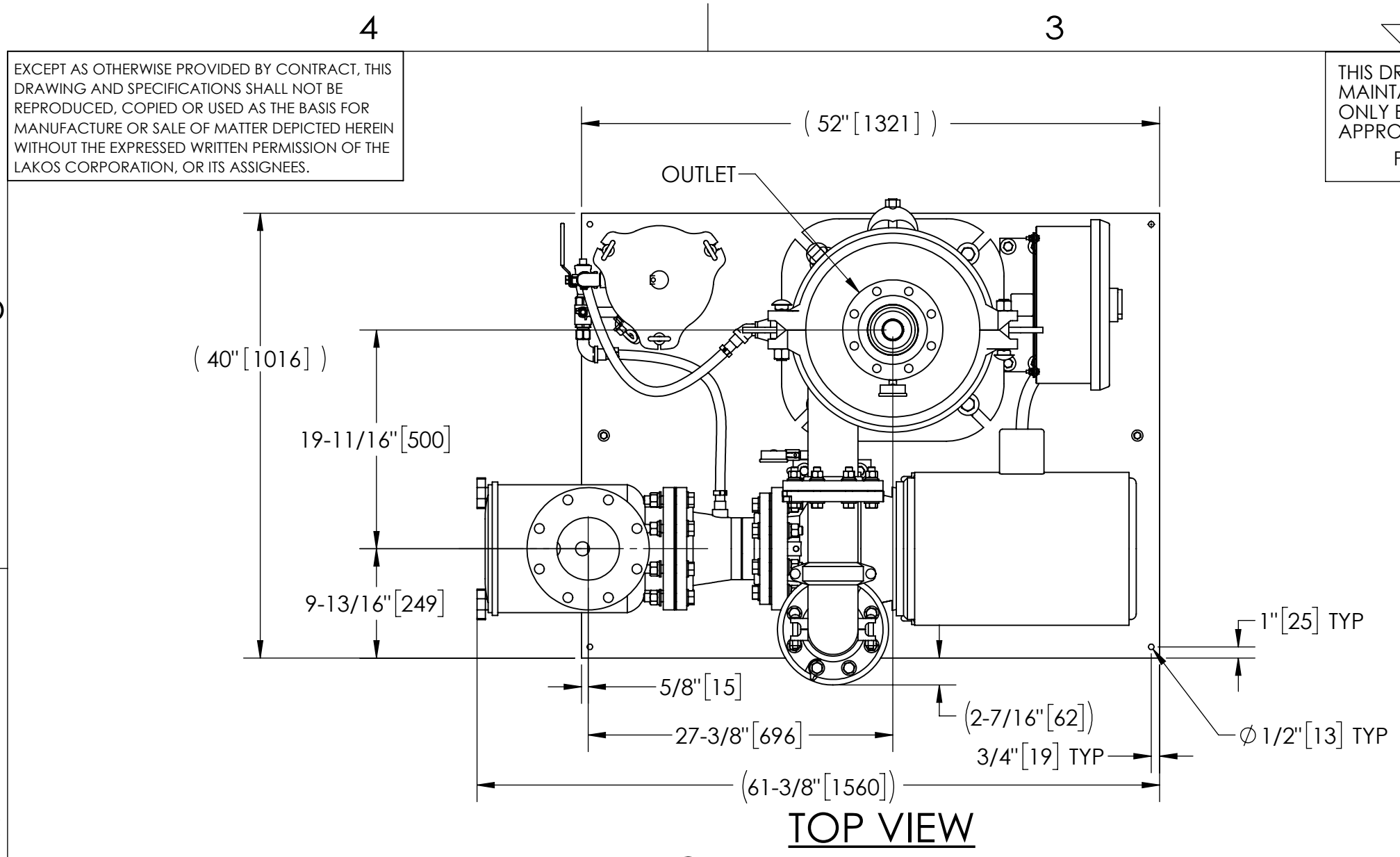
EXCEPT AS OTHERWISE PROVIDED BY CONTRACT, THIS DRAWING AND SPECIFICATIONS SHALL NOT BE REPRODUCED, COPIED OR USED AS THE BASIS FOR MANUFACTURE OR SALE OF MATTER DEPICTED HEREIN WITHOUT THE EXPRESSED WRITTEN PERMISSION OF THE LAKOS CORPORATION, OR ITS ASSIGNEES.

THIS DRAWING HAS BEEN GENERATED AND IS MAINTAINED BY A CAD SYSTEM. CHANGES SHALL ONLY BE INCORPORATED AS DIRECTED BY AN APPROVED ENGINEERING CHANGE ORDER (ECO). PAPER COPIES ARE UNCONTROLLED.

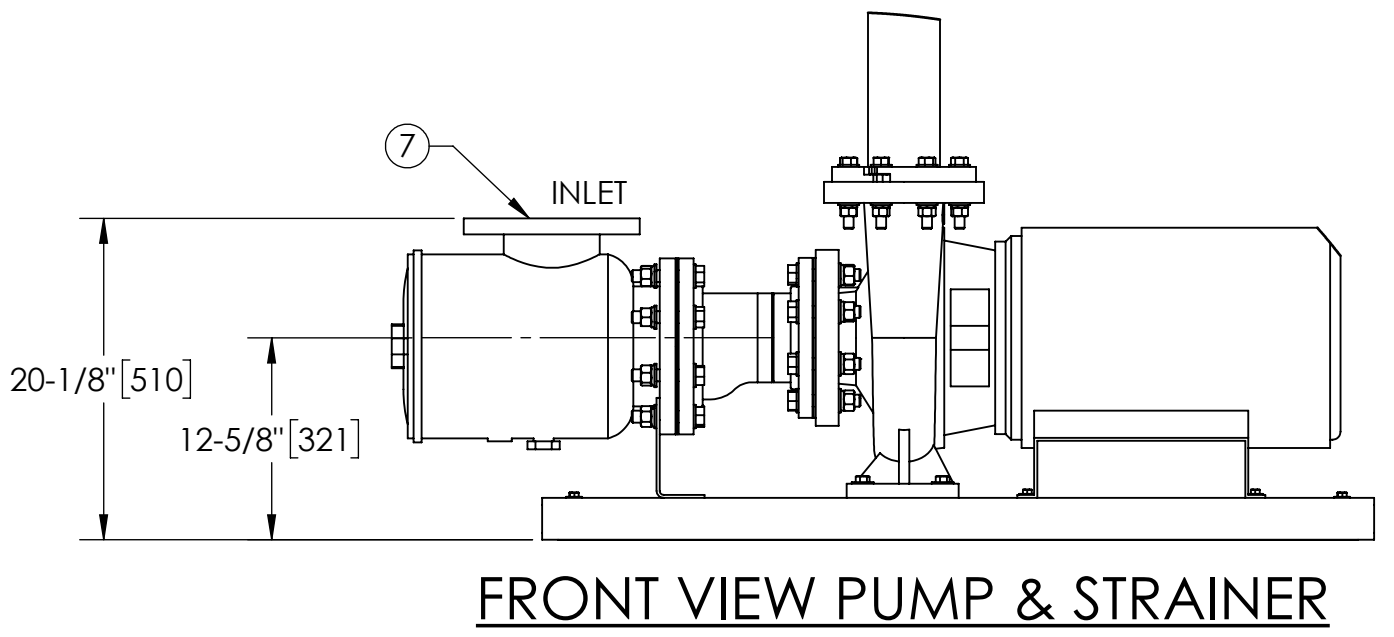
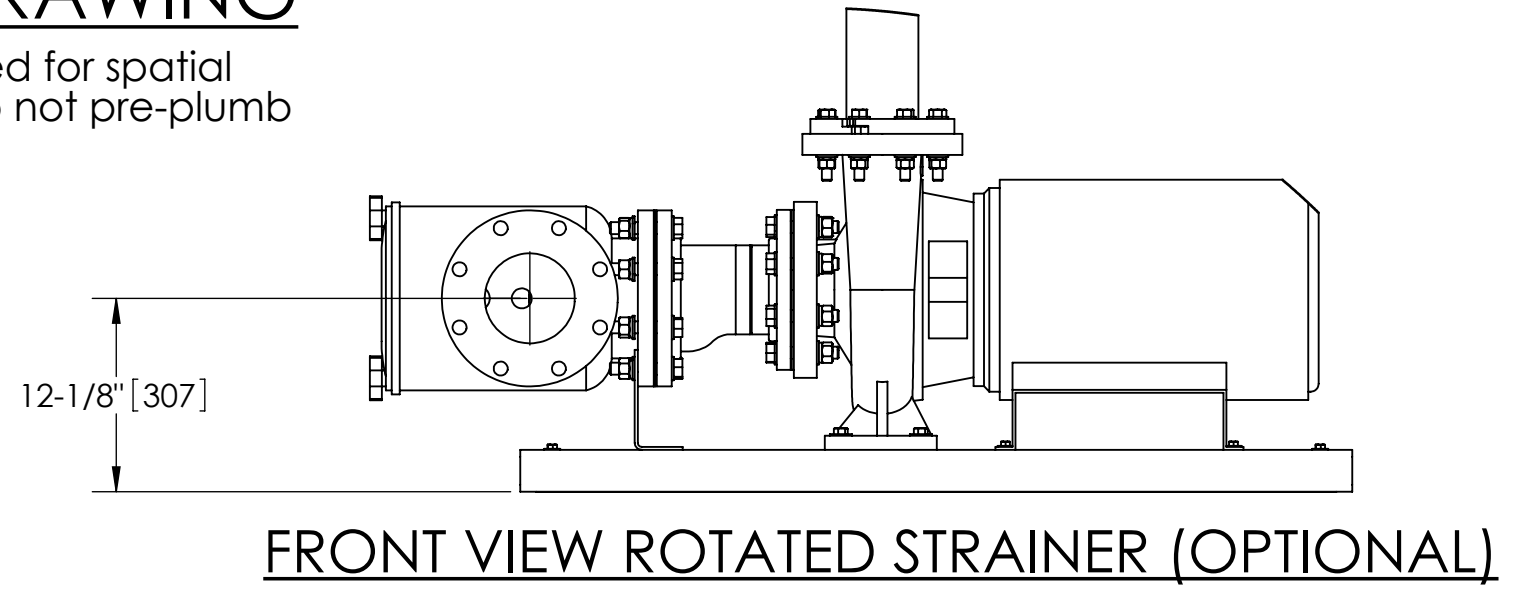
REVISION HISTORY				
ZONE	REV	DESCRIPTION	DATE	APPROVED
	01	RELEASED FOR SUBMITTAL	4/16/21	TPF

- NOTES:
- INLET IS 6" PIPE (125# ANSI FLANGED).
  - OUTLET IS 4" PIPE (150# ANSI FLANGED).
  - PURGE OUTLET IS 1-1/2" PIPE.
  - MAXIMUM PRESSURE: 150 psi (10.3 bar).
  - MAXIMUM FLUID OPERATING TEMPERATURE: 100°F (37.8°C).
  - SPECIFIED FLOW RATE: 610 gpm (139 m³/hr).
  - FINISH: AS ASSEMBLED.
  - POWER REQUIREMENT: 3/60/460V.
  - NEMA 4X MOTOR STARTER ENCLOSURE WITH SAFETY DISCONNECT AND H.O.A. SWITCH.
  - APPROXIMATE DRY WEIGHT: 1636 lbs (742 kg).
  - INLET/OUTLET VALVE KIT RECOMMENDED: SEE FACTORY.
  - MINIMUM SUCTION LINE TO JC SYSTEM IS 6" PIPE.
  - FLOODED SUCTION REQUIRED.

- COMPONENT LIST:
- ELECTRICAL CONTROL BOX 3/60/460V W/120V TRANSFORMER.
  - SEPARATOR: eJPX-0350-V.
  - PUMP: 20 HP CENTRIFUGAL, 1800 rpm, 3/60/460V.
  - INLET/OUTLET PRESSURE GAUGES: 0-160 psi, GLYCERIN-FILLED.
  - PURGE EQUIPMENT: SRV-833.
  - DIFFERENTIAL PRESSURE INDICATOR: (AVAILABLE WITH DRY ELECTRICAL CONTACT - MODEL DHE-15-S. ORDER SEPARATELY).
  - STRAINER, SUCTION DIFFUSER.



**SUBMITTAL DRAWING**  
 This drawing is submitted for spatial consideration only. Do not pre-plumb to these dimensions.



UNLESS OTHERWISE SPECIFIED: DIMENSIONS ARE IN: INCHES (mm) TOLERANCES ARE: FRACTIONS DECIMALS ANGLES $\pm 1"$ .XX $\pm .01$ $\pm 1/4^\circ$ .XXX $\pm .005$ .XXXX $\pm .0005$	ENGINEERED FOR: <b>STANDARD</b>		FRESNO, CALIFORNIA WWW.LAKOS.COM		
	APPROVALS	DATE			
	DO NOT SCALE DRAWING	DRAWN TPF	4/16/21	TITLE eJCX-0610-SRV, JC SYSTEM HI EFF SWEEPER eJPX-0350, 3/60/460V	
	MATERIAL PER LAKOS SPEC	ENGR -	-	SIZE C	MODEL NO.
FINISH AS ASSEMBLED	REVIEW -	-	DWG NO. 185242	REV. 01	
	WORK ORDER	QTY.	SCALE 1:12	EST. WT. 1636 lb	
			SHEET 1 OF 1		

DWG NO. 185242  
 SHEET 1 OF 1  
 REV. 01