

EXCEPT AS OTHERWISE PROVIDED BY CONTRACT, THIS DRAWING AND SPECIFICATIONS SHALL NOT BE REPRODUCED, COPIED OR USED AS THE BASIS FOR MANUFACTURE OR SALE OF MATTER DEPICTED HEREIN WITHOUT THE EXPRESSED WRITTEN PERMISSION OF THE LAKOS CORPORATION, OR ITS ASSIGNEES.

THIS DRAWING HAS BEEN GENERATED AND IS MAINTAINED BY A CAD SYSTEM. CHANGES SHALL ONLY BE INCORPORATED AS DIRECTED BY AN APPROVED ENGINEERING CHANGE ORDER (ECO). PAPER COPIES ARE UNCONTROLLED.

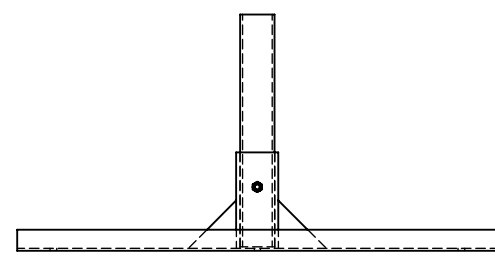
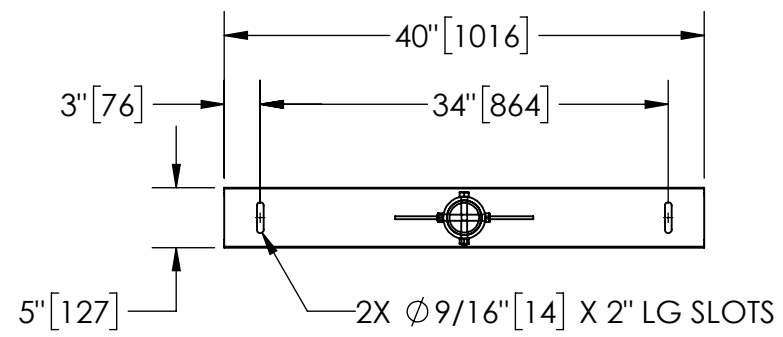
SUBMITTAL DRAWING

This drawing is submitted for spatial consideration only. Do not pre-plumb to these dimensions.

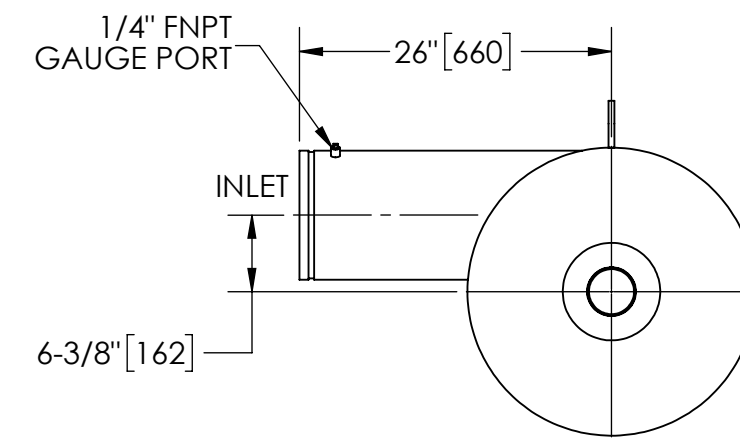
REVISION HISTORY				
ECN	REV	DESCRIPTION	DATE	APPROVED
	A	RELEASED FOR PRODUCTION	8/1/2018	DOG
	B	UPDATED FOR MANUFACTURABILITY, NO CHANGES TO FUNCTION	1/27/2020	DOG
	C	UPDATED FOR MANUFACTURABILITY, NO CHANGES TO FUNCTION	2/29/2018	TRR
	D	UPDATED DESCRIPTION TO LGS-1150, UPDATED TO CURRENT DRAFTING STANDARDS	1/27/2020	DGB

NOTES:

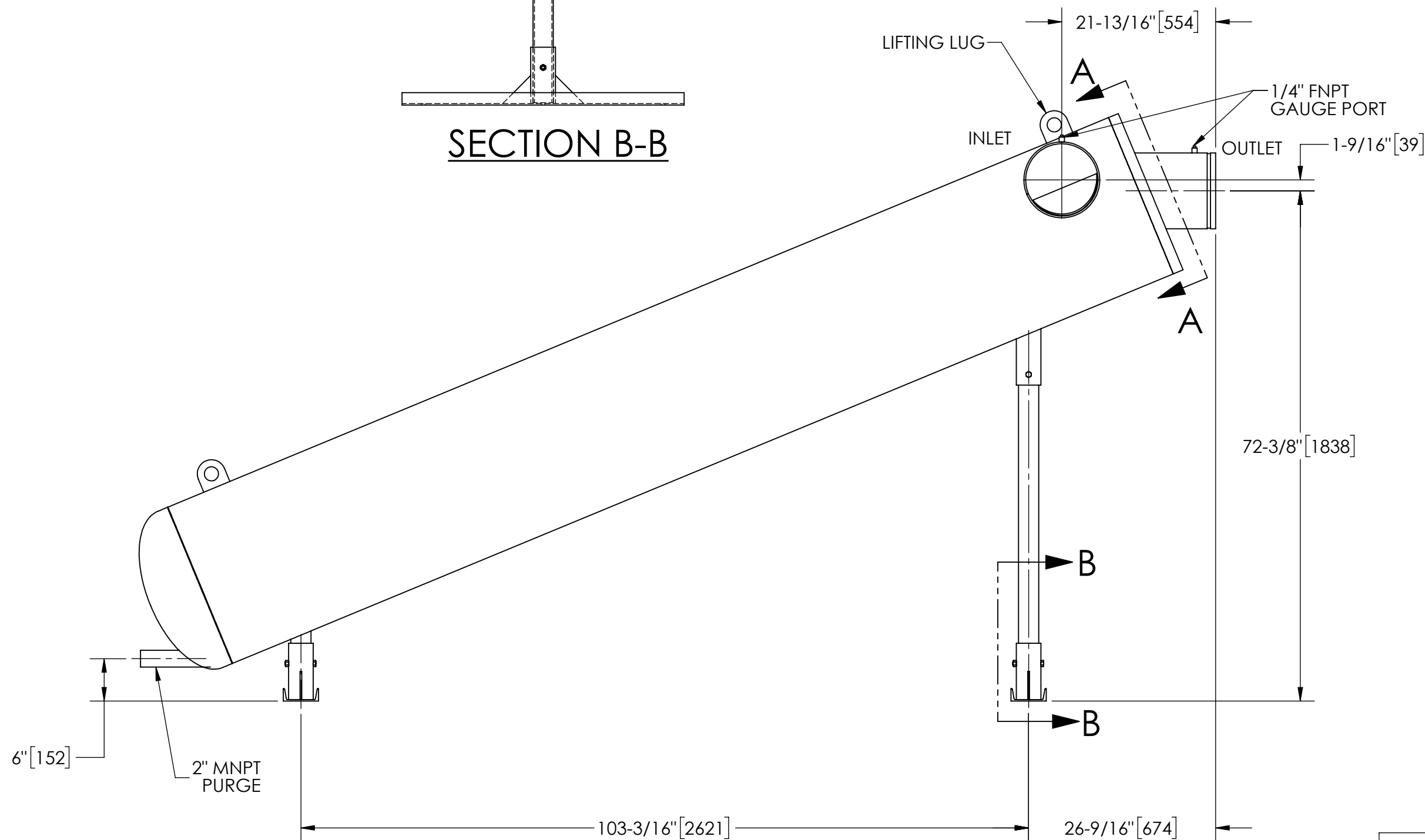
1. INLET & OUTLET ARE 10" GROOVED PIPE.
2. MAXIMUM PRESSURE: 150 psi (10.3 bar).
3. MAXIMUM TEMPERATURE: 180°F (82.2°C).
4. PRESSURE LOSS: 3-15 psid (.2-1.0 bar) AT RATED FLOW.
5. RATED FLOW: 1150-2450 gpm (261-556 m³/hr).
6. APPROXIMATE DRY WEIGHT: 1311 lbs (595 kg).
7. APPROXIMATELY OPERATING WEIGHT: 3718 lbs (1686 kg).



SECTION B-B



SECTION A-A



UNLESS OTHERWISE SPECIFIED: DIMENSIONS ARE IN: INCHES [mm] TOLERANCES ARE: FRACTIONS DECIMALS ANGLES ± 1" .XX ± .01 ± 1/4" XXX ± .005 XXXX ± .0005		ENGINEERED FOR: STANDARD			
DO NOT SCALE DRAWING		APPROVALS	DATE	TITLE	
MATERIAL CLASS P-1 MILD CARBON STEEL		DRAWN DOG	7/30/18	LGS-1150-L GROUNDWATER SEPARATOR 10" LGS LOW PROFILE CARBON STEEL	
FINISH LAKOS GREEN		ENGR -	-	SIZE C	MODEL NO.
		REVIEW -	-	DWG NO. 181777	REV. D
		WORK ORDER	QTY.	SCALE 1:16	EST. WT. 1311 lb SHEET 1 OF 1