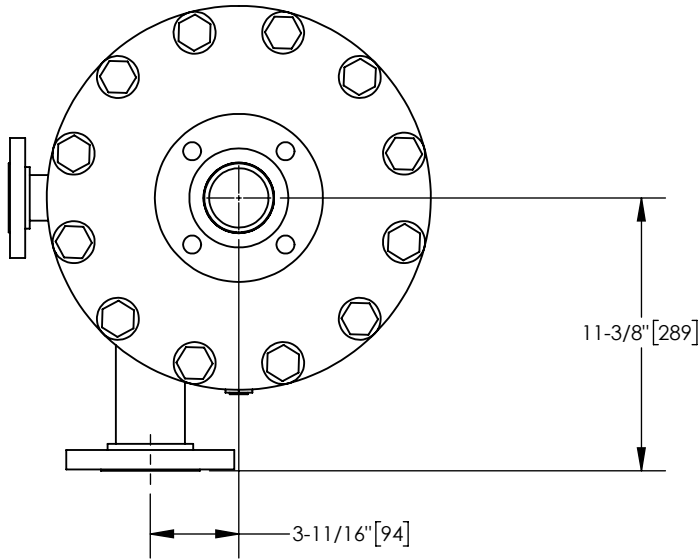


EXCEPT AS OTHERWISE PROVIDED BY CONTRACT, THIS DRAWING AND SPECIFICATIONS SHALL NOT BE REPRODUCED, COPIED OR USED AS THE BASIS FOR MANUFACTURE OR SALE OF MATTER DEPICTED HEREIN WITHOUT THE EXPRESSED WRITTEN PERMISSION OF THE LAKOS CORPORATION, OR ITS ASSIGNEES.

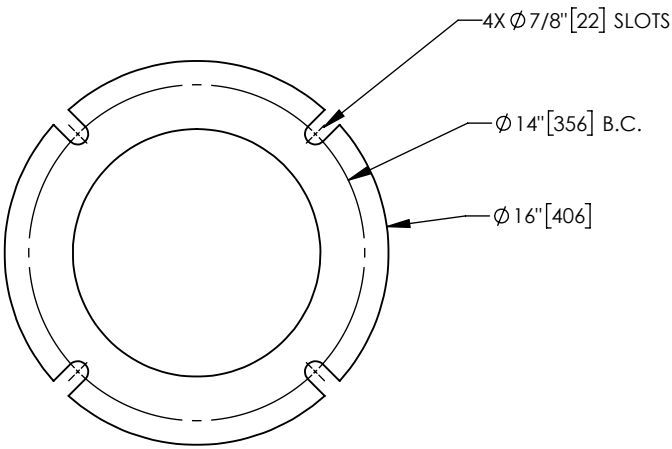
NOTES:

1. INLET & OUTLET FLANGES ARE 2-1/2" 150# RF PER ANSI B16.5 REQUIRING 4X Ø 5/8" BOLTS (BOLTS AND GASKETS NOT INCLUDED).
2. MAXIMUM PRESSURE: 150 psi (10.3 bar).
3. FOR MAXIMUM TEMPERATURE, CONSULT FACTORY.
4. PRESSURE LOSS: 3-12 psid (.2-.8 bar) AT RATED FLOW.
5. RATED FLOW: 85-145 gpm (19-33 m³/hr).
6. APPROXIMATE DRY WEIGHT: 404 lbs (183 kg).
7. FINISH: POWDERCOAT LAKOS BLUE (EXTERIOR ONLY). SCOTCHKOTE 134 (INTERNAL WETTED SURFACES).
8. INLET AND OUTLET PRESSURE GAUGE PORTS TO BE SUPPLIED ON CONNECTING PIPING BY END USER.

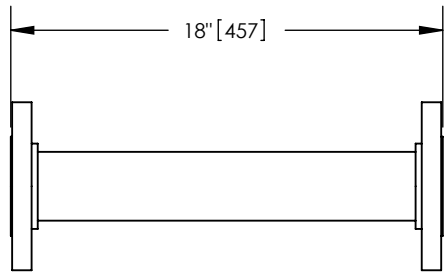


TOP VIEW

THIS DRAWING HAS BEEN GENERATED AND IS MAINTAINED BY A CAD SYSTEM. CHANGES SHALL ONLY BE INCORPORATED AS DIRECTED BY AN APPROVED ENGINEERING CHANGE ORDER (ECO). PAPER COPIES ARE UNCONTROLLED.



BOTTOM VIEW




FLANGED SPOOL

MODEL FS-025/SK (AVAILABLE SEPARATELY)  
REQUIRED FOR REMOVAL OF TOP ASSEMBLY

SUBMITTAL DRAWING

This drawing is submitted for spatial consideration only. Do not pre-plumb to these dimensions.

UNLESS OTHERWISE SPECIFIED: DIMENSIONS ARE IN: INCHES [mm] TOLERANCES ARE: FRACTIONS    DECIMALS    ANGLES ± 1/2"    .XX ± .01    ± 1/4° .XXX ± .005 .XXXX ± .0005				ENGINEERED FOR: <b>STANDARD</b>		 <small>FRESNO, CALIFORNIA WWW.LAKOS.COM</small>			
DO NOT SCALE DRAWING		APPROVALS	CEE	DATE	1/6/19				
MATERIAL CLASS P-1 MILD CARBON STEEL		ENGR	-		-	TITLE JSK-0085-V, SEPARATOR 85-145 gpm, CARBON STEEL/SCOTCHKOTE			
FINISH SEE NOTES		REVIEW	AMF	1/8/9		SIZE C	MODEL NO.	DWG NO. <b>183690</b>	REV. <b>01</b>
		WORK ORDER			QTY.	SCALE 1:8		EST. WT. 404 lb	SHEET 1 OF 1