

4

3

2

1

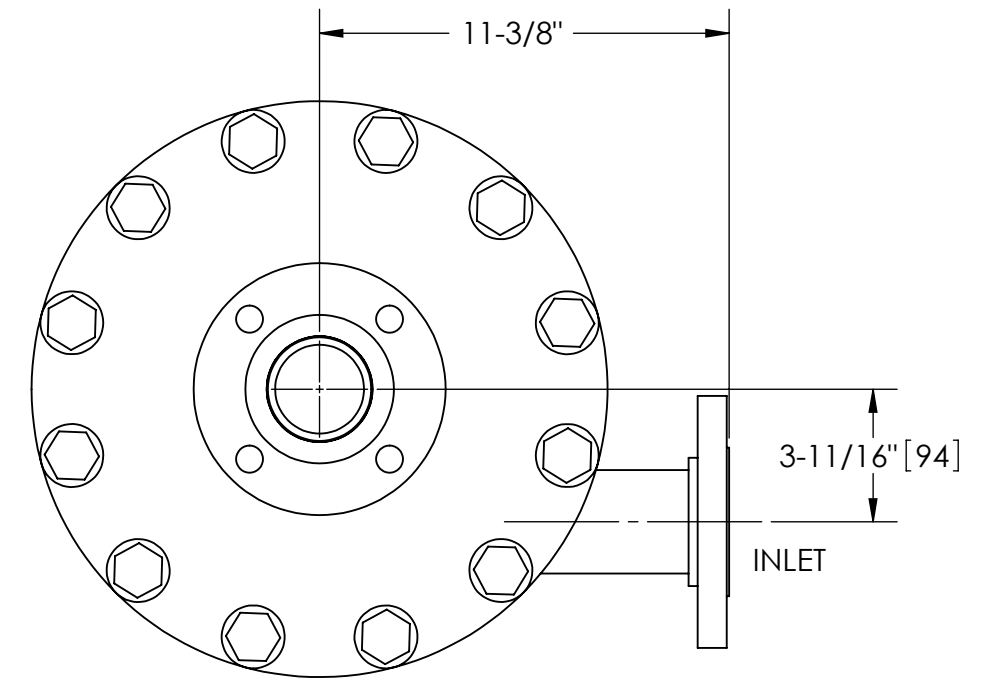
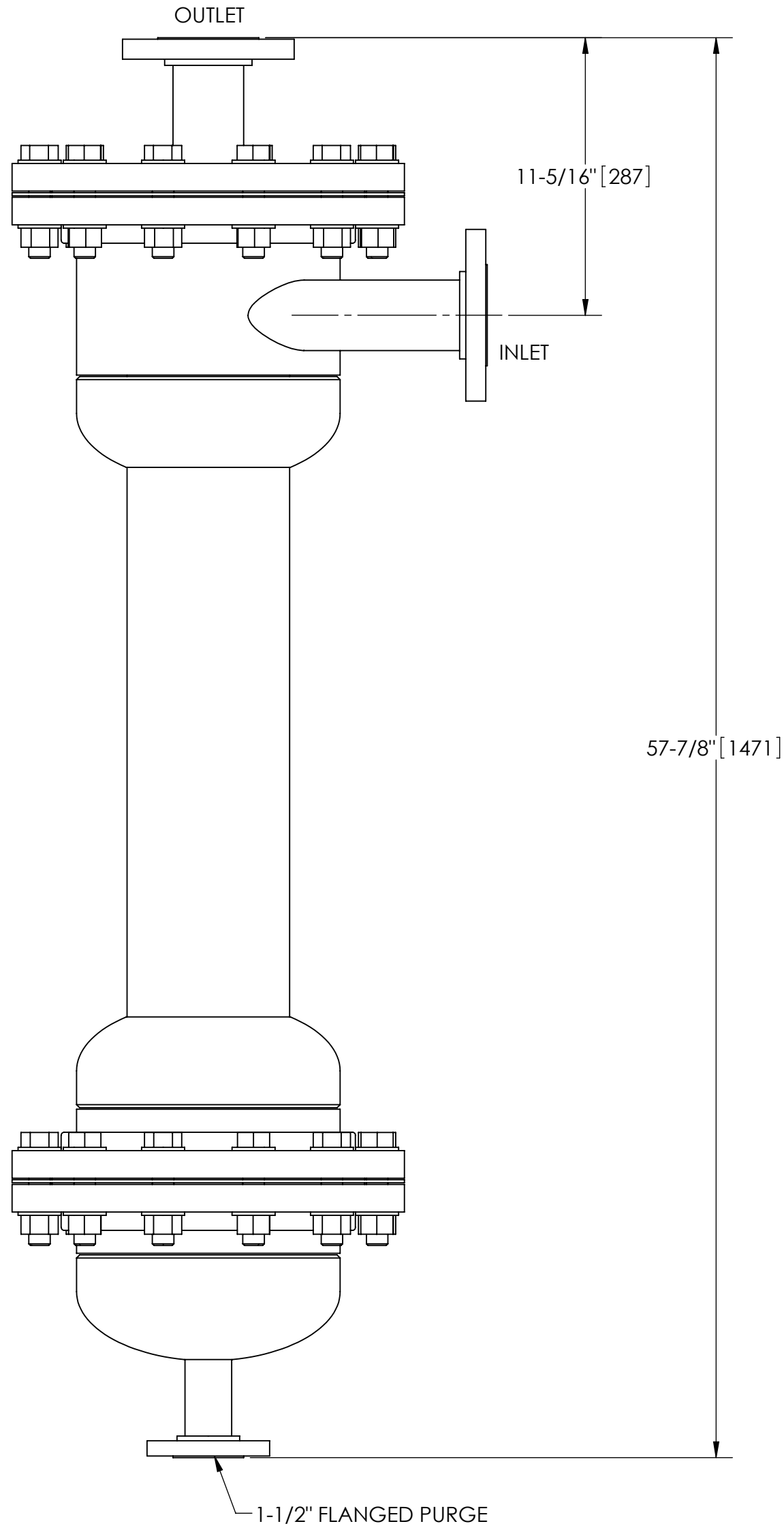
EXCEPT AS OTHERWISE PROVIDED BY CONTRACT, THIS DRAWING AND SPECIFICATIONS SHALL NOT BE REPRODUCED, COPIED OR USED AS THE BASIS FOR MANUFACTURE OR SALE OF MATTER DEPICTED HEREIN WITHOUT THE EXPRESSED WRITTEN PERMISSION OF THE LAKOS CORPORATION, OR ITS ASSIGNEES.

NOTES:

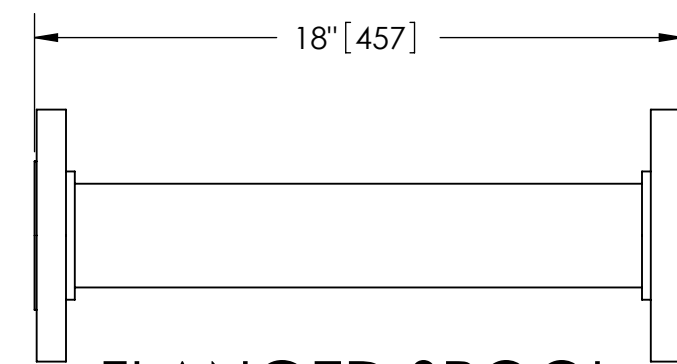
1. INLET & OUTLET FLANGES ARE 2-1/2" 150# RF PER ANSI B16.5 REQUIRING 4X Ø 5/8" BOLTS (BOLTS AND GASKETS NOT INCLUDED).
2. MAXIMUM PRESSURE: 150 psi (10.3 bar).
3. FOR MAXIMUM TEMPERATURE, CONSULT FACTORY.
4. PRESSURE LOSS: 3-12 psid (.2-.8 bar) AT RATED FLOW.
5. RATED FLOW: 85-145 gpm (19-33 m³/hr).
6. APPROXIMATE DRY WEIGHT: 350 lbs (159 kg).
7. FINISH: POWDERCOAT LAKOS BLUE (EXTERIOR ONLY). SCOTCHKOTE 134W (INTERNAL WETTED SURFACES).

REVISIONS				
ZONE	REV.	DESCRIPTION	DATE	APPROVED
	B	UPDATED HEAD OUTSIDE HEIGHT TO MATCH ACTUAL	1/21/2020	TPF

THIS DRAWING HAS BEEN GENERATED AND IS MAINTAINED BY A CAD SYSTEM. CHANGES SHALL ONLY BE INCORPORATED AS DIRECTED BY AN APPROVED ENGINEERING CHANGE ORDER (ECO). PAPER COPIES ARE UNCONTROLLED.



TOP VIEW



FLANGED SPOOL

MODEL FS-025/SK (AVAILABLE SEPARATELY)
REQUIRED FOR REMOVAL OF TOP ASSEMBLY

SUBMITTAL DRAWING

This drawing is submitted for spatial consideration only. Do not pre-plumb to these dimensions.

UNLESS OTHERWISE SPECIFIED: DIMENSIONS ARE IN: INCHES [mm] TOLERANCES ARE: FRACTIONS DECIMALS ANGLES ± 1/4" .XX ± .01 ± 1/4° XXX ± .005 XXXX ± .0005		ENGINEERED FOR: STANDARD			
DO NOT SCALE DRAWING		APPROVALS	DATE	TITLE	
MATERIAL CLASS P-1 MILD CARBON STEEL		DRAWN JBI	3/29/07	JSK-0085, SEPARATOR	
FINISH SEE NOTES		ENGR DLW	3/30/07	2-1/2" JSK, CARBON STEEL/SCOTCHKOTE	
		REVIEW -	-	SIZE C	MODEL NO.
		WORK ORDER	QTY.	SCALE 3:16	DWG NO. 120571
				EST. WT. 350 lb	SHEET 1 OF 1

4

3

2

1

DWG NO.

120571

SHT

1

REV.

B

A