

EXCEPT AS OTHERWISE PROVIDED BY CONTRACT, THIS DRAWING AND SPECIFICATIONS SHALL NOT BE REPRODUCED, COPIED OR USED AS THE BASIS FOR MANUFACTURE OR SALE OF MATTER DEPICTED HEREIN WITHOUT THE EXPRESSED WRITTEN PERMISSION OF THE LAKOS CORPORATION, OR ITS ASSIGNEES.

THIS DRAWING HAS BEEN GENERATED AND IS MAINTAINED BY A CAD SYSTEM. CHANGES SHALL ONLY BE INCORPORATED AS DIRECTED BY AN APPROVED ENGINEERING CHANGE ORDER (ECO). PAPER COPIES ARE UNCONTROLLED.

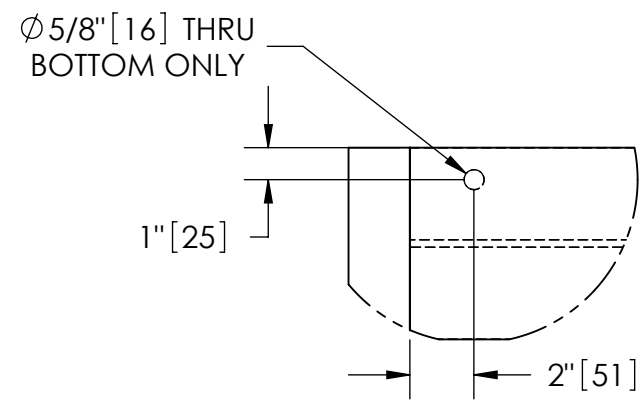
REVISION HISTORY				
ZONE	REV	DESCRIPTION	DATE	APPROVED
	A	UPDATED PUMP LAYOUT	7/15/08	ADJ
	B	CHANGED PUMP	3/21/11	ADJ
	C	CHANGE AMP TO XYLEM PUMP AND UPDATE SKID	10/16/19	TRR
	D	MFG DWG CHANGES	7/1/21	TPF/AAM

NOTES:

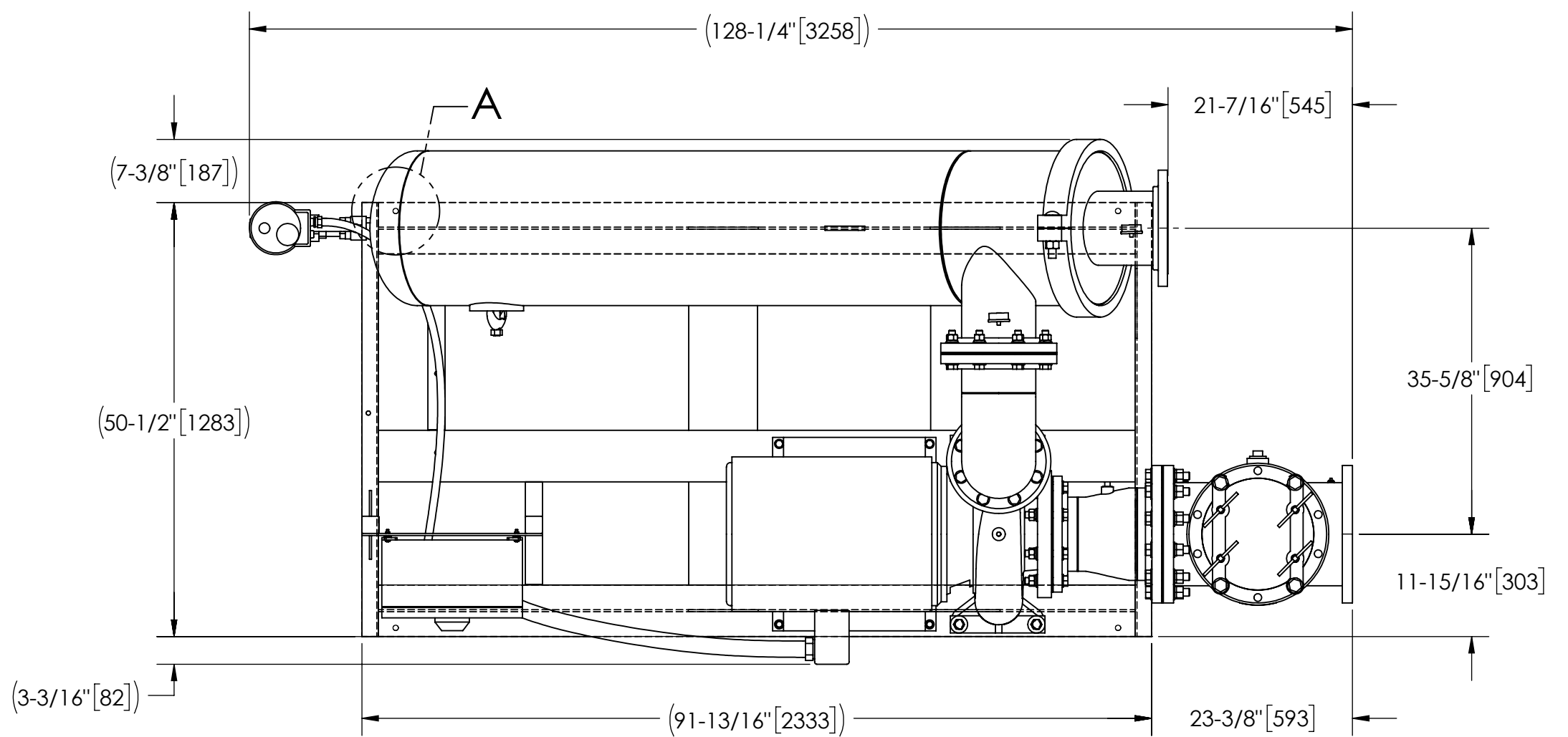
- INLET IS 10" PIPE (125# ANSI FLANGED).
- OUTLET IS 8" PIPE (150# ANSI FLANGED).
- PURGE OUTLET IS 1-1/2" PIPE.
- MAXIMUM PRESSURE: 150 psi (10.3 bar).
- MAXIMUM FLUID TEMPERATURE: 100°F (37.8°C).
- SPECIFIED FLOWRATE OF 1670 gpm (380 m³/hr).
- FINISH: AS ASSEMBLED.
- POWER REQUIREMENT: 3/60/460V.
- APPROXIMATE DRY WEIGHT: 3122 lbs (1416 kg).
- MINIMUM PIPE FROM TOWER BASIN TO TC SYSTEM IS 12" PIPE.
- FLOODED SUCTION REQUIRED.

COMPONENT LIST:

- ELECTRICAL CONTROL BOX: 3/60/460V, W/120V TRANSFORMER.
- SEPARATOR: HTX-0810-L/FLG.
- PUMP: 50HP, CENTRIFUGAL B&G, TEFC, 1800 rpm, 3/60/460V.
- INLET/OUTLET PRESSURE GAUGES: 0-160 psi, GLYCERIN-FILLED.
- PURGE EQUIPMENT: ABV-15-120.
- BASKET STRAINER 10".
- SKID: CARBON STEEL, PAINTED.

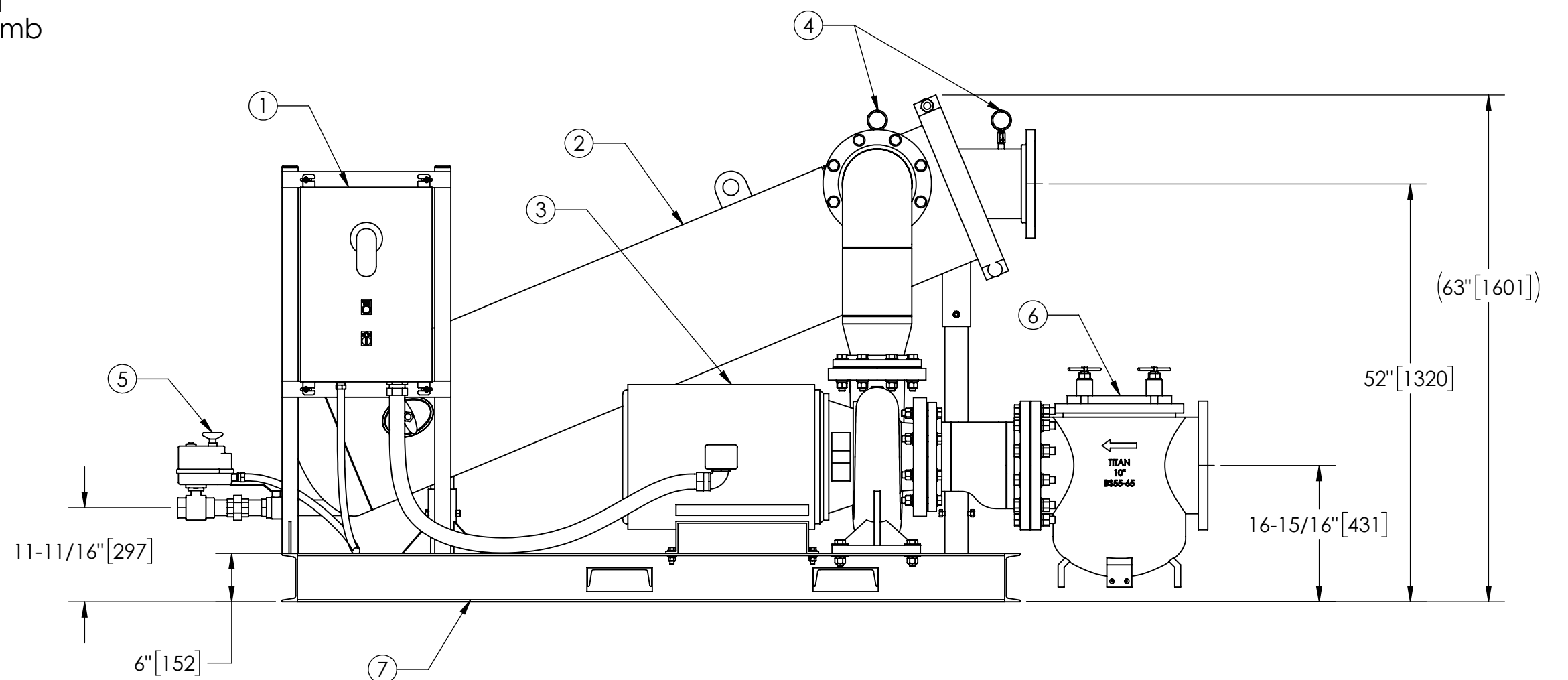
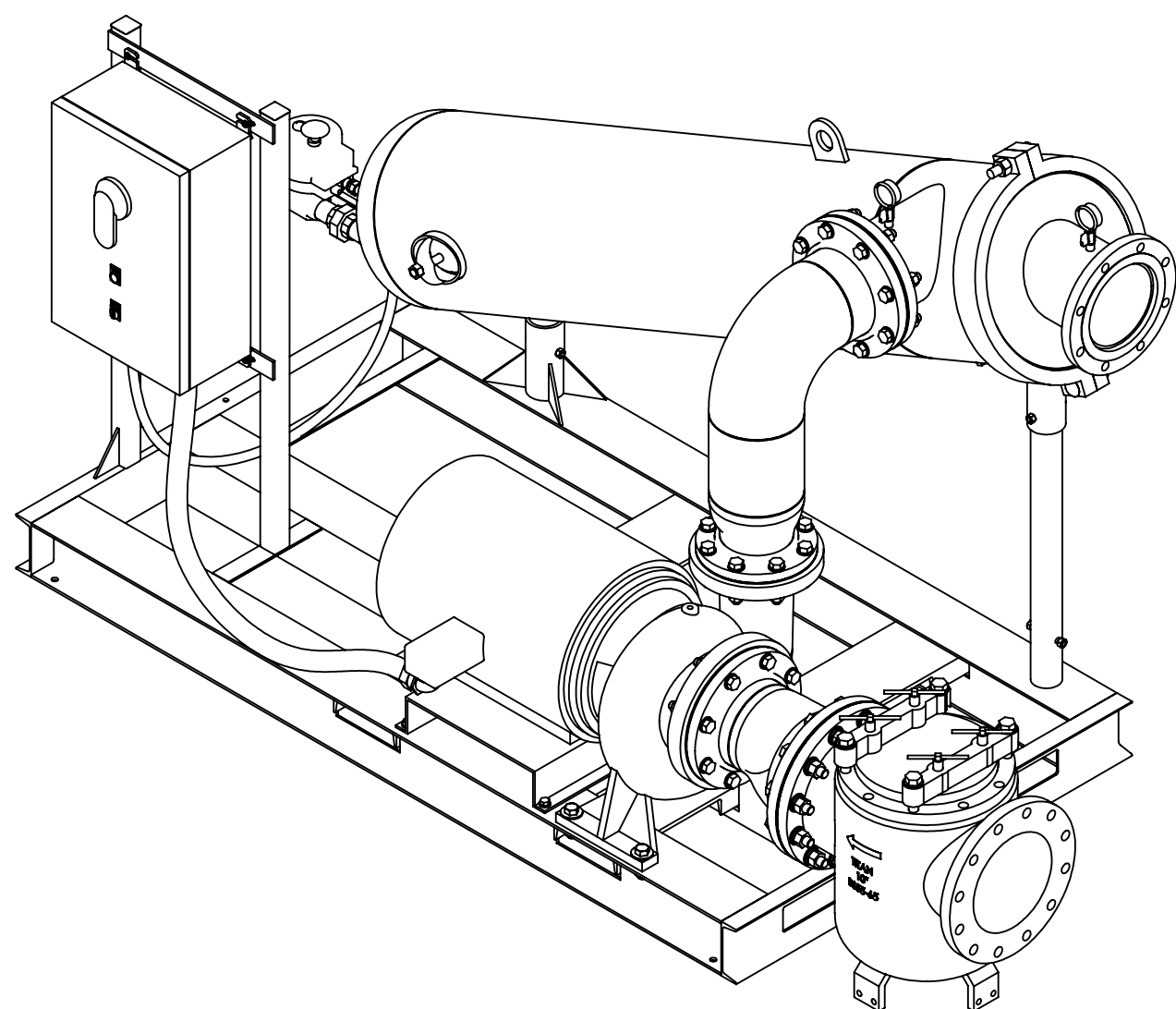


DETAIL A
SCALE 1:10



SUBMITTAL DRAWING

This drawing is submitted for spatial consideration only. Do not pre-plumb to these dimensions.



UNLESS OTHERWISE SPECIFIED: DIMENSIONS ARE IN: INCHES [mm] TOLERANCES ARE: FRACTIONS DECIMALS ANGLES ± 1" .XX ± .01 ± 1/4" .XXX ± .005 .XXXX ± .0005		ENGINEERED FOR: STANDARD			
DO NOT SCALE DRAWING	APPROVALS	DATE	TITLE		
MATERIAL PER LAKOS SPEC	DRAWN ADJ	9/16/05	TCX-1670-ABV/L, TC SYSTEM, SWEEPER HTX-0810-L, 3/60/460V		
FINISH AS ASSEMBLED	ENGR HSK	1/9/06	SIZE C	MODEL NO.	DWG NO. 125107
	REVIEW -	-	SCALE 1:16	EST. WT. 3122 lb	SHEET 1 OF 1
	WORK ORDER	QTY.			

DWG NO. 125107
SHEET 1 OF 1
REV. D