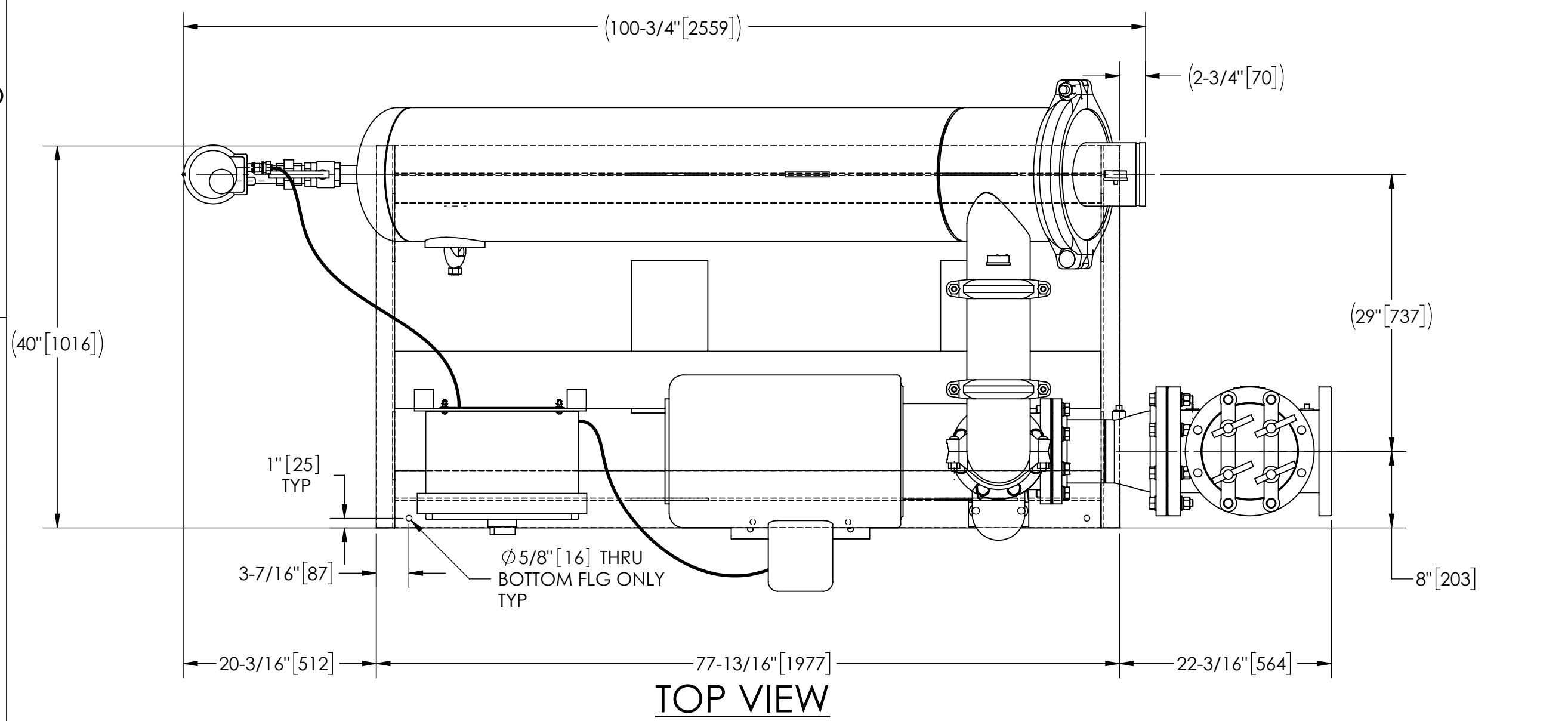


EXCEPT AS OTHERWISE PROVIDED BY CONTRACT, THIS DRAWING AND SPECIFICATIONS SHALL NOT BE REPRODUCED, COPIED OR USED AS THE BASIS FOR MANUFACTURE OR SALE OF MATTER DEPICTED HEREIN WITHOUT THE EXPRESSED WRITTEN PERMISSION OF THE LAKOS CORPORATION, OR ITS ASSIGNEES.

THIS DRAWING HAS BEEN GENERATED AND IS MAINTAINED BY A CAD SYSTEM. CHANGES SHALL ONLY BE INCORPORATED AS DIRECTED BY AN APPROVED ENGINEERING CHANGE ORDER (ECO). PAPER COPIES ARE UNCONTROLLED.

| REVISION HISTORY | | | | |
|------------------|-----|------------------------|---------|----------|
| ZONE | REV | DESCRIPTION | DATE | APPROVED |
| | 01 | RELEASE FOR PRODUCTION | 6/22/22 | CEE |



TOP VIEW

NOTES:

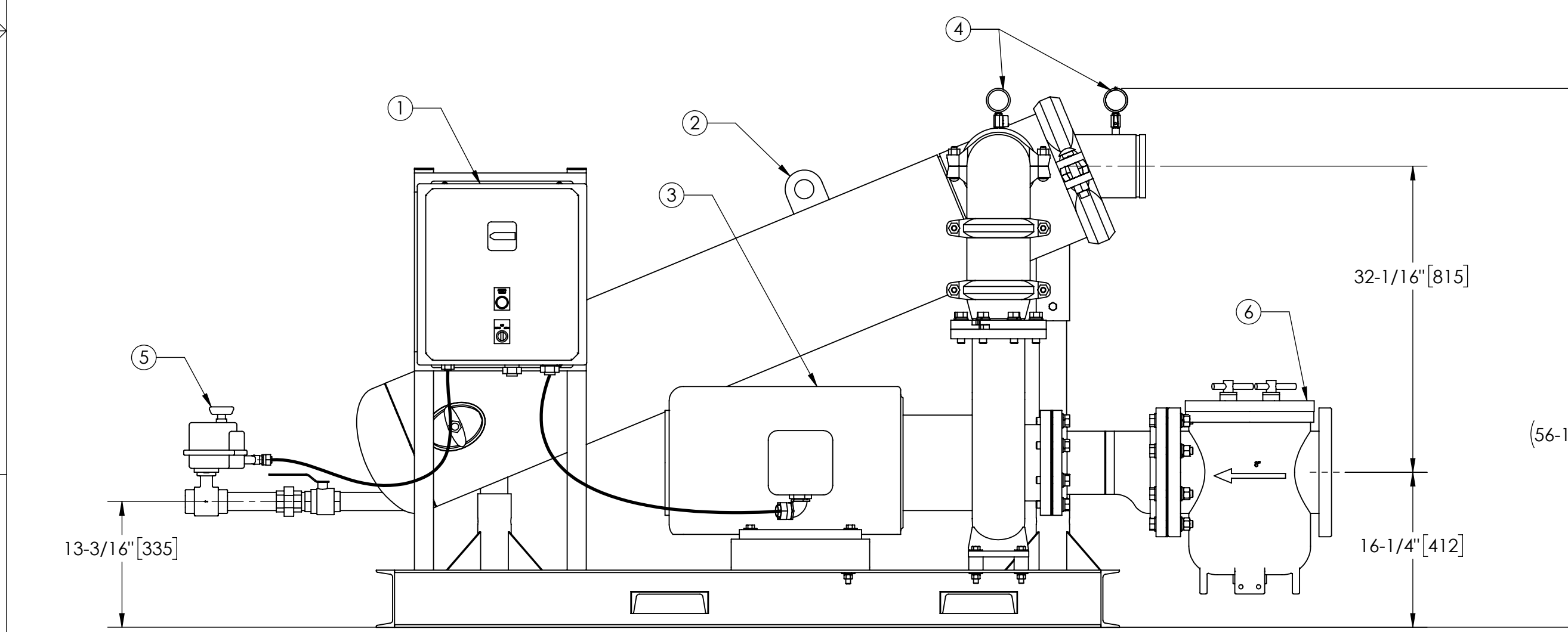
1. INLET IS 8" PIPE (125# ANSI FLANGED).
2. OUTLET IS 6" PIPE (GROOVED).
3. PURGE OUTLET IS 1-1/2" PIPE.
4. MAXIMUM PRESSURE: 150 psi (10.3 bar).
5. MAXIMUM FLUID TEMPERATURE: 100°F (37.8°C).
6. SPECIFIED FLOWRATE OF 1100 gpm (250 m³/hr).
7. FINISH: AS ASSEMBLED.
8. POWER REQUIREMENT: 3/60/460V.
9. NEMA 4X MOTOR STARTER ENCLOSURE WITH SAFETY DISCONNECT AND H.O.A. SWITCH.
10. APPROXIMATE DRY WEIGHT: 2283 lbs (1036 kg).
11. INLET/OUTLET VALVE KIT, MODEL TCX-1100 RECOMMENDED.
12. MINIMUM PIPE FROM TOWER BASIN TO TC SYSTEM IS 10" PIPE.
13. FLOODED SUCTION REQUIRED.

COMPONENT LIST:

- ① ELECTRICAL CONTROL BOX 3/60/460V W/120V TRANSFORMER.
- ② SEPARATOR: HTX-0500-L/TC.
- ③ PUMP: 40 HP CENTRIFUGAL AMERICAN MARSH, TEFC, 1800 rpm, 3/60/460V.
- ④ INLET/OUTLET PRESSURE GAUGES: 0-160 psi, GLYCERIN-FILLED.
- ⑤ PURGE EQUIPMENT: ABV-15-120V.
- ⑥ BASKET STRAINER.

SUBMITTAL DRAWING

This drawing is submitted for spatial consideration only. Do not pre-plumb to these dimensions.



FRONT VIEW

| | | | | |
|--|--------------------|---|---|--|
| UNLESS OTHERWISE SPECIFIED: DIMENSIONS ARE IN: INCHES [mm] TOLERANCES ARE: FRACTIONS DECIMALS ANGLES ± 1" .XX ± .01 ± 1/4" .XXX ± .005 .XXXX ± .0005 | ENGINEERED FOR: | | FRESNO, CALIFORNIA WWW.LAKOS.COM | |
| | STANDARD | | | |
| | APPROVALS | DATE | TITLE TCX-1100-ABV/L, TC SYSTEM SWEEPER HTX-0500, 3/60/460V | |
| | DRAWN CEE | 6/22/22 | | |
| MATERIAL PER LAKOS SPEC | ENGR - | SIZE MODEL NO. DWG NO. 135623-AMP REV. 01 SCALE 1:12 EST. WT. 2283 lb SHEET 1 OF 1 | | |
| FINISH AS ASSEMBLED | REVIEW AAM 6/22/22 | | | |
| | WORK ORDER | QTY. | | |

DWG NO. 135623-AMP SH 1 REV 01